

RECORD OF SURVEY

No 42

Township 4 South Range 39 East W. M., Union County, Oregon.

CHAINS. LKS.

S. J. Newhard

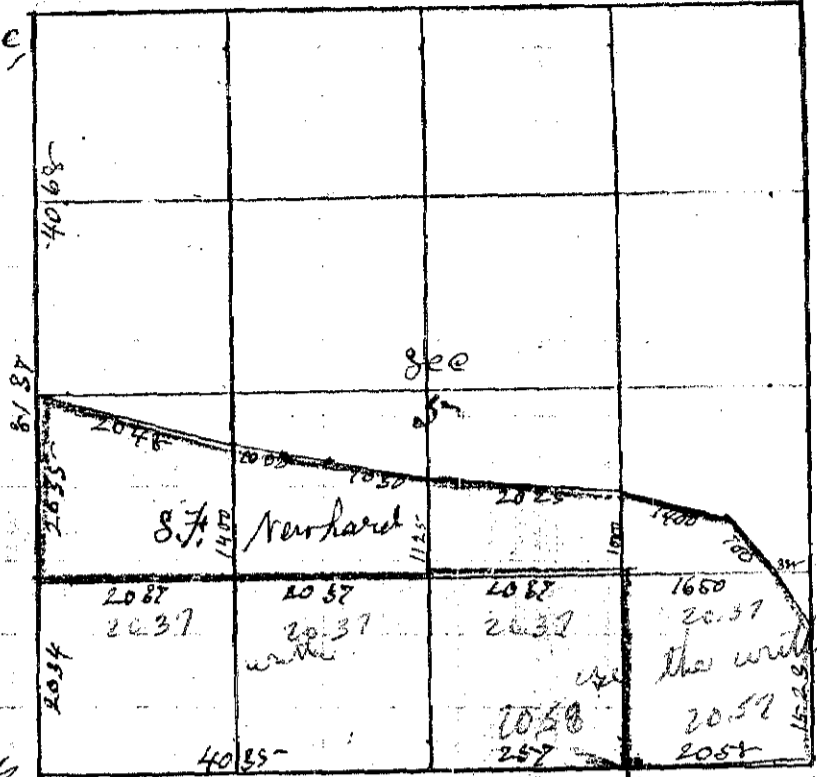
Aug. the 7 1888

I commenced at the 1/4 Sec.
Corner bet Sec 5 & 8
Thence West

40 30

found no Sec corner set
Temporary corner to
Sec 5 = 6 = 7 & 8

Thence West bet Sec 6 & 7
Over 20° E



40 00
80 08

found no 1/4 Sec corner
intersect West Boundary

72 Mts North of corner to Sec 6 = 7 = 1 1/4
making an excess of 45 Mts over U.S. Field Notes
I therefore run East

79 99

set temporary Sec corner to Sec 5 = 6 = 7 & 8
The corner to Sec 7 = 8 = 17 & 18

Thence North bet Sec 7 & 8
Over 20° E

80 00

set temporary Sec corner
Thence North bet Sec 5 & 6

20 00

set temporary 1/8 corner

40 00

found no 1/4 Sec Let temporary 1/4 Sec cor

82 74

intersect North Boundary 90 Mts West
of corner to Sec 5 = 6 = 8 1/2 & 9. Making an excess
of 274 links over U.S. Field Notes
I therefore run South on true line.

40 78

set Post in mound of Stone for 1/4 Sec corner bet Sec 5 & 8

61 12 1/2

set 7 x 10 x 26 inches in mound of Stone for 1/8 corner

81 37 1/2

set Stone 4 x 6 x 30 inches for corner to Sec 5 = 6 = 7 & 8

The 1/4 Sec corner bet Sec 5 & 8

Thence East on true line bet Sec 5 & 8
Over 20° E

20 00

set temporary 1/8 corner

41 15

The corner to Sec 4 = 5 = 8 & 9

Thence West

20 57 1/2

set Stone 4 x 10 x 24 for 1/8 corner

41 15

The 1/4 Sec corner bet Sec 5 & 8

Township 4 South

Range 29 East

Union County, Oregon.

- The $\frac{1}{8}$ corner on West Boundary SW $\frac{1}{4}$ Sec 5 -
 Hence East through center S $\frac{1}{2}$ Sec 5 -
- 27 00 Set temporary $\frac{1}{16}$ corner
 - 49 00 Set temporary $\frac{1}{16}$ corner
 - 60 00 Set temporary $\frac{1}{16}$ corner
 - 51 77 Intersect East Boundary Sec 5 -
 Hence west on 20° E
 - 20 38 Set Post for center S $\frac{1}{2}$ Sec 5 -
 - 40 76 Stone for center S $\frac{1}{2}$ Sec 5 -
 - 61 14 Set Stone for center SW $\frac{1}{4}$ Sec 5 -
 - 81 44 The $\frac{1}{8}$ corner on West Boundary SW $\frac{1}{4}$ Sec 5
- The $\frac{1}{16}$ corner in center SW $\frac{1}{4}$
 Hence North on 20° E
- 14 00 Set Post for Meander No. 1
- The $\frac{1}{4}$ Sec Corner set Sec 5 of 6
 Hence S 74° E
- 20 48 Meander Corner No. 1
 Hence S 79° E
 - 10 00 Set Post for Meander Corner No. 2
 Hence S 83° E
 - 10 30 Set Post for Meander Corner No. 3
 Hence S 85° E
 - 20 25 Set Post for Meander No. 4
 Hence S 78° E
 - 14 00 Set Post for Meander Corner No. 5
 Hence S 24° E
 - 7 00 Set Post for Meander Corner No. 6 388 lks west
 of the $\frac{1}{8}$ corner on East Boundary S $\frac{1}{2}$ Sec 5 -

J. W. Kimbell County Surveyor