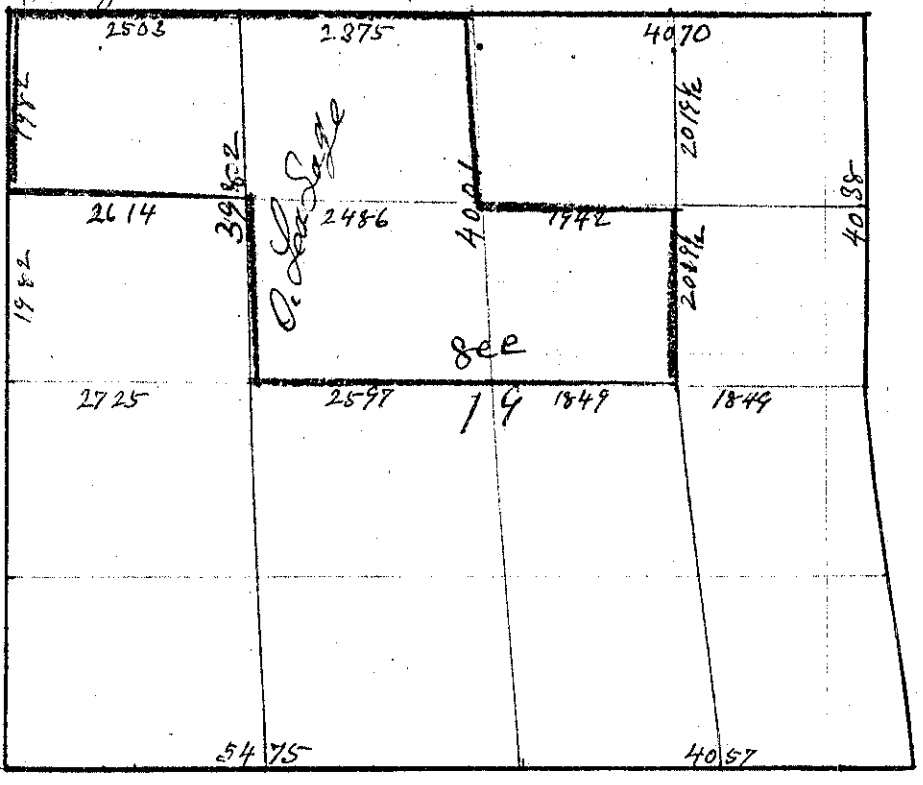


O. Ladage

July The 13 1888

I Commenced at the 1/4 Sec corner  
bet Sec 19 & 24 on Range line bet  
Ranges 40 & 41

Thence North bet Sec 19 & 24  
Var 25° E



- 20 00 Set temporary 1/8 corner
- 40 00 found no Sec corner  
Set temporary cor. to Sec 18=19=13 & 24  
Thence North var 20° 15' E
- 40 00 Set temporary 1/8 corner
- 39 28 The 1/4 Sec corner bet Sec 18 & 19

I therefore find a deficiency of 72 links as per U.S. field notes

- 19 82 Set Stone Thence South
- 19 82 Set Stone 24 x 10 x 8 inches for 1/8 corner
- 39 64 Set Stone 18 x 8 x 7 inches for corner to Sec 18=19=13 & 24  
Thence South
- 19 82 Set Stone in mound of Stone for 1/8 corner
- 39 62 The 1/4 Sec corner bet Sec 19 & 24

The corner to Sec 18=19=13 & 24  
Thence East bet Sec 18 & 19  
Var 21° E

- 21 28 Set temporary 1/8 corner
- 41 28 found no 1/4 Sec corner
- 48 78 The 1/4 Sec corner bet Sec 18 & 19  
Thence West on line
- 23 75 Set Stone 17 x 7 x 6 inches for 1/8 corner  
from which  
a Pine 30 inches dia. bears S 77° W 665 links dist.
- 48 78 The corner to Sec 18=19=13 & 24

The 1/4 Sec corner bet Sec 18 & 19  
Thence East bet Sec 18 & 19  
Var 20° E

- 5 55 Ravine 75 feet deep course N.W 700 lks across
- 20 50 Set temporary 1/8 corner
- 40 70 Intersect N & S line 50 lks North of cor. to Sec 17=18=19 & 20  
Thence N 89° 17' W on true line
- 20 55 Set Post for 1/8 corner
- 49 79 The 1/4 Sec corner bet Sec 18 & 19

CHAINS.  
LKS.

The corner to Sec 17 = 18 = 19 & 20  
Thence South bet Sec 19 & 20  
Var 20° E

40 38 The 1/4 Sec corner bet Sec 18 & 19  
Thence South Var 20° E

40 00 Intersect - E of W line 664 links west of  
The corner to Sec 19 = 20 = 29 & 30  
Thence N 8° 31' W on True line

40 50 The 1/4 Sec corner bet Sec 19 & 20

The corner to Sec 19 = 20 = 29 & 30  
Thence West bet Sec 19 & 30  
Var 20° 30' E

40 57 The 1/4 Sec cor bet Sec 19 & 30 a stone in mound of Stone  
Thence West Var 20° E

41 45 found no Sec corner but at  
54 75 The corner to Sec 19 = 30 = 24 & 25

The 1/4 Sec corner bet Sec 18 & 19  
Thence South through Sec 19  
Var 19° E

20 00 Set Temporary 1/16 corner

40 00 Set Temporary Center Sec 19

81 20 Intersect South Boundary 605 lks west of 1/4 Sec Cor  
Thence N 6° 18' W on True line

The 1/4 Sec corner bet Sec 19 & 20  
Thence West through Sec 19  
Var 20° E

20 00 Set Temporary 1/16 corner

37 98 Intersect True North & South line at center

90 20 Intersect West Boundary at the 1/4 Sec cor  
Thence East

27 25 Set Post for 1/16 corner

from which

a Pine 10 inches bears North 251 lks. dist.

53 22 Set Stone 15 x 9 x 9 inches for center Sec 19

from which

a a Pine 12 inches bears N 47 3/4° W 179 lks. dist.

71 71 Set Post in mound of Stone from which

a Pine 14 inches dia. bears S 29° E 21 lks. dist.

Township 4 South

Range 47 East

Union County, Oregon.

40 10 The 1/4 Sec corner set Dec 19 1880

The 1/6 corner in center E 1/2 Sec 19

thence North through N E 1/4

20 50 Set Temporary 1/6 cor

40 19 Intersect North Boundary at the 1/8 corner  
thence South

20 14 1/2 Set Post for 1/6 corner in center N E 1/4 Sec 19  
from which

a Ironrod 4 inches dia. set South 10 inches

40 17 The 1/6 corner in center E 1/2 Sec 19

The 1/6 corner in center Sec 19

thence North

20 50 Set Stone 4 + 12 + 28 inches

from which

a Pole 20 inches dia. set N 65 1/2° E 85 1/2° dist.

thence West

51 00 The 1/8 corner on West Bdy S W 1/4 Sec 19

thence East

46 14 Set Post for 1/6 corner in center S W 1/4 Sec 19

from which

a Pole 16 inches dia. set S 24° 15' 00" E 98 1/2° distant

J. W. Kernell County Suror