

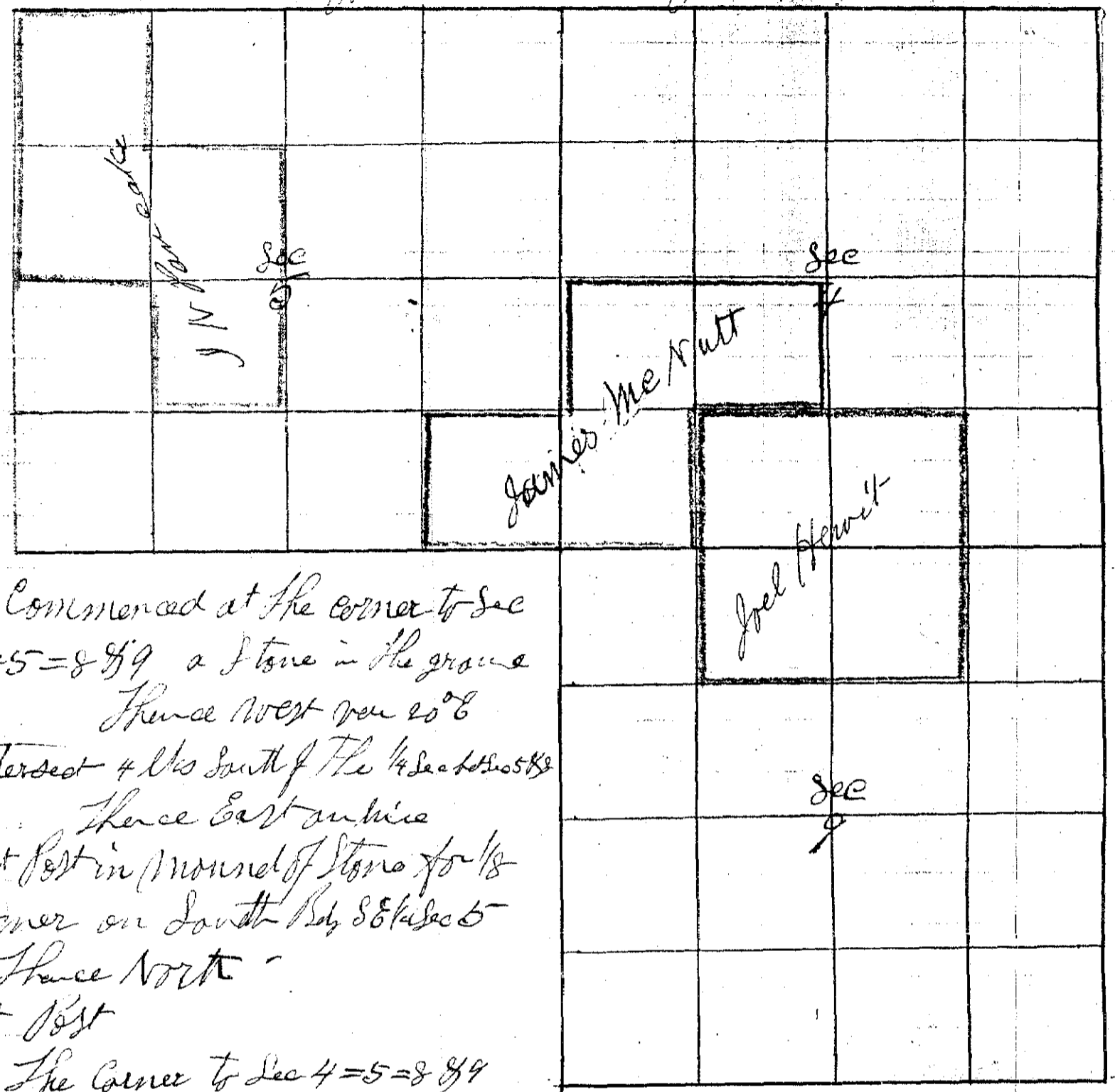
Township 8 South

Range 46 East W. M.

Union County, Oregon.

James Mc Nut and Joel Hewitt

June 30th 1888



- I Commenced at the corner to Sec 4=5=8 & 9 a Stone in the ground
 Thence West on line
- 34 37 Intersect 4 lks South of the 1/4 Sec to Sec 5 & 8
 Thence East on line
- 39 42 Set Post in mound of Stone for 1/8
 Corner on South Side Sec 5
 Thence North
- 20 50 Set Post
 The Corner to Sec 4=5=8 & 9
 Thence North to Sec 4 & 5 over 25° E
- 20 55 Set temporary 1/8 corner
 40 53 found no 1/4
- 79 84 Intersect North boundary 4 lks West of Corner to Sec 4=5=8 & 9
 From which line
- 87 93 a Pine 36 inches dia bears N 35° E 54 lks dist
 I found the Stone out in the road about 4 rods
 from where and the Settlers claimed the corner was
 in the road. The bearing tree was cut down but
 the stump was standing alright with the marks
 plainly visible so I reestablished the corner
 as per the S. field notes.
 Thence South on line
- 39 48 Set Stone 6 x 8 x 12 in for 1/8 Sec corner bet Sec 4 & 5
 from which
 a Pine 30 inches diameter bears N 57 1/2° E 145 lks dist
- 59 66 Set Post for 1/8 corner
- 79 84 The corner to Sec 4=5=8 & 9

Township 8 South Range 46 East W.M. Union County, Oregon.

CHAINS. LKS.

The corner to Sec 4-5-8 & 9

Thence East var 20° E

20 00 Set temporary 1/8 corner

40 00 Set temporary 1/4 Sec cor

60 00 Set temporary 1/8 corner

80 36 The corner to Sec 3-4-9 & 10

Thence West

20 09 Set Post for 1/8 corner from which

an asp 6 inches diameter bears N 8 1/2° E 150 lks dist

" " 4 " " " S 53 1/2° W 131 " "

40 18 Set Post for 1/4 Sec cor bet Sec 4 & 9

60 27 Set Post for 1/8 corner

80 36 The corner to Sec 4-5-8 & 9

The 1/4 Sec corner bet Sec 4 & 5-

Thence East through Sec 4 var 20° E

20 50 Set temporary 1/8 corner

40 50 Set temporary center Sec 4

60 00 Set temporary 1/8 corner

79 68 Intersect East boundary 10 lks South of 1/4 Sec cor bet Sec 3 & 4

Thence West

20 05 Set Post for 1/8 corner in center of Sec 4

from which

an asp 5 inches dia. bears N 70° W 71 links dist

" " 6 " " " S 28° E 137 " "

40 11 Set Post for center from which

an asp 3 inches dia. bears N 28° W 17 lks dist

a Pine 30 inches " " S 77° W 258 " "

59 89 Set Post

79 68 The 1/4 Sec corner bet Sec 4 & 5-

The 1/4 Sec corner bet Sec 4 & 3

Thence South through Sec 4 var 20° E

39 75 Intersect E & W line

59 75 Set temporary 1/8 corner

79 85 The 1/4 Sec corner bet Sec 4 & 9

Thence North

20 05 Set Post for 1/8 corner

from which

a Pine 36 inches dia. bears S 63° W 92 lks

- 40 22 The 1/16 corner in center S 1/4 Sec 4
Thence South var 20° E
The 1/8 corner on South Boundary S E 1/4 Sec 4
Thence North
- 20 11 Set Post for 1/16 corner in center S E 1/4 Sec 5
from which
an asp 4 inches dia bears N 60° W 42 lks
- 19 77 The 1/8 corner on East Boundary S E 1/4 Sec 5
Thence West
Set Post from which
a Pine 20 inches bears S 55° W 35 links dist
The 1/8 corner on South Bdy; S W 1/4 Sec 4
Thence North var 20° E
- 19 85 The 1/16 corner in center S W 1/4 Sec 4
The 1/8 corner on North Bdy N W 1/4 Sec 9
Thence South var 20° E
- 40 08 Set Post for 1/16 corner in center N W 1/4 Sec 9 from which
a Pine 10 inches dia, bears S 89° E 76 links dist.
Thence East var 20° E
- 60 18 Intersect East Boundary Sec 9
The 1/4 Sec corner bet Sec 9 & 10
Thence North var 20° E
- 40 00 The Corner to Sec 3-4-9 & 10
Thence South
- 20 08 Set Post for 1/8 corner from which
an asp 5 inch dia, bears N 58° 30' W 43 lks dist
Thence West
- 20 06 Set Post for 1/16 corner in center N E 1/4 Sec 9
from which
an asp 10 inches dia, bears S 48° W 82 links dist.

W. Linnell Deputy County Suror