

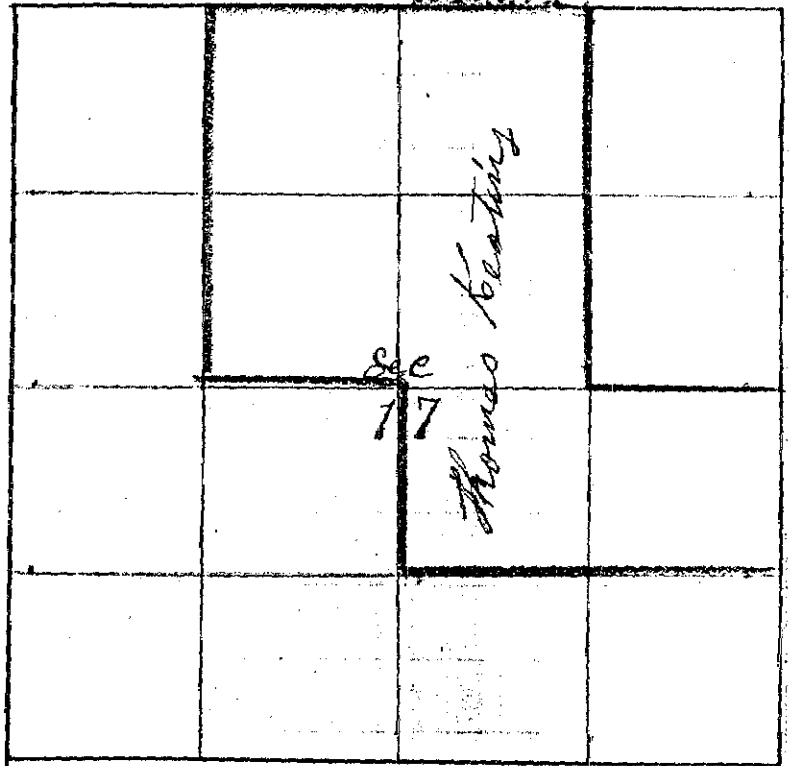
Township 8 South

Range 42 East W.M.

Union County, Oregon.

CHAINS. LKS.

Thomas Keating Oct. 20th 1887
I commenced at the 1/4 Sec corner
bet Sec 16 & 17 a Post in Mid of East
Thence South bet Sec 16 & 17
Var 20° E



- 20 00 Set Temporary 1/8 corner
- 36 07 Powder River 135 lks across course East
- 40 04 The corner to Sec 16 = 17 = 20 & 21
Thence North
- 20 02 Set Post in mound of Earth for
1/8 corner
- 40 04 The 1/4 Sec corner bet Sec 16 & 17

The 1/4 Sec corner bet Sec 17 & 20 Post in Mid of East
Thence North Through Sec 17 Var 20° E

- 20 00 Set Temporary 1/16 corner
- 21 18 Powder River 118 lks across runs S 80° E
- 40 00 Set Temporary Post for center Sec 17
- 80 20 The 1/4 Sec corner bet Sec 7 & 17 a Post in Mid of East

The 1/4 Sec corner bet Sec 7 & 17
Thence West Var 20° E

- 20 50 Set Temporary 1/8 corner
- 40 00 The corner to Sec 7 = 8 = 17 & 18 in Mrs Johnsons Coral
Post decayed Reestablished by Planting Post
Dug Pits Built Mound of Earth
Thence South bet Sec 17 & 18 Var 20° E

- 40 50 Found Mrs 1/4 Sec corner and Set Temporary 1/4 Sec cor
- 80 50 The corner to Sec 17 = 18 = 19 & 20 Post in Mid of East
Thence North

- 40 50 Set 1/4 Sec Post in Slough S.W.
Thence East Through Sec 17 Var 20° E

- 10 63 Powder River 132 lks across runs S 15° E

- 20 50 Set Temporary 1/16 corner
- 40 05 Intersect N & S line 4 lks South of 1st Stake at center
- 80 20 The 1/4 Sec corner bet Sec 16 & 17
Thence West

- 40 15 Set Post and Dug Pits Built Mound for center Sec 17
- 60 17 1/2 Set Post dug Pits Built Mound for 1/16 cor
- 80 20 1/4 Sec corner bet Sec 17 & 18 The center Sec 17 Thence South
- 19 98 Set Post dug Pits Built Mound for 1/16 cor on Westmirell Deputy Co Surveyors