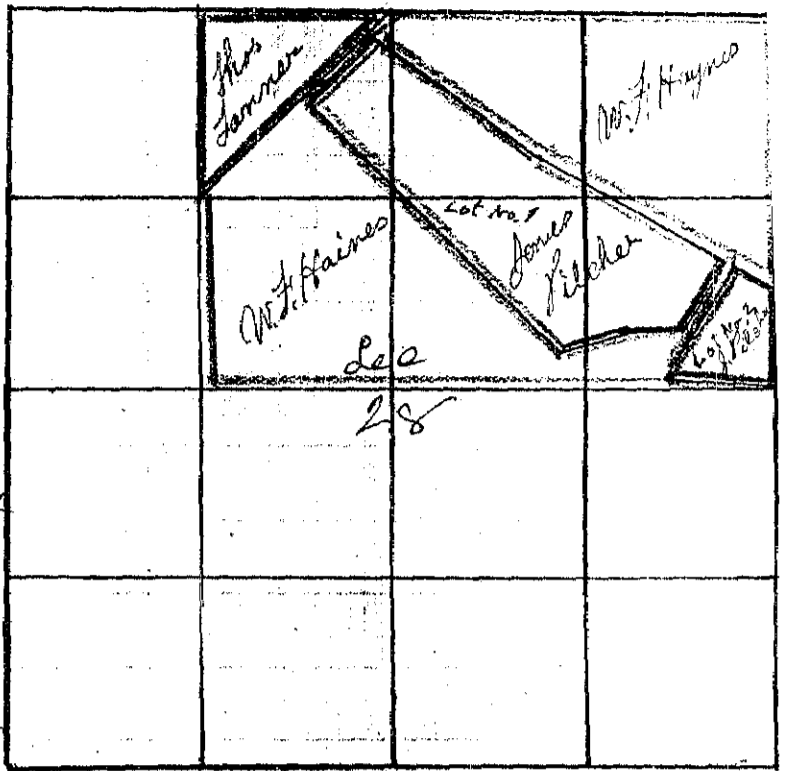


For Wm J. Haynes June 1st 1887

I Commenced at the 1/4 Sec. Corner bet Sec 27 & 28 the corner being out of place I Re-established it - by planting a Post 4 inches Square and 3 1/2 feet long made mound 1/3 of c from which



a Pine 2 4 inch dia, brs S 75° E 28 3/4 lks dist.

" 10 " " " S 64° W 9 1/4 lks dist.

Thence North bet Sec 27 & 28 var 20° S

44 30 The Corner to Sec 21 = 22 = 27 & 28 a Stone marked

Thence West bet Sec 21 & 28 var 20° E

40 29 The 1/4 Sec Corner bet Sec 21 & 28 a Post in mound of Pine

Thence West var 20° E

20 00 Set Temporary 1/8 corner

28 52 Intersect N & S line 15 lks South of Corner to Sec 20 = 21 = 28 1/2 29 from which

a Cottonwood 16 inch dia, brs N 65° W 12 lks dist

" 24 " " " N 65° E 8 " "

" 10 " " " S 50° E 18 " "

an alder 6 " " " S 30° W 25 " "

Thence East on True line

19 26 Set Stone 7 x 10 x 14 inches for 1/8 corner

Thence South var 20° E

20 00 Set Stone 9 x 12 x 21 inches from which

a Pine 6 inches dia, brs N 58° E 19 lks dist

" 22 " " " N 77° W 67 " "

" 8 " " " S 48° E 88 " "

Thence N 44° E

25 05 to the 1/4 Sec Corner bet Sec 21 & 28

Thence S 38° W

3 44 Set Stone 4 x 5 x 9 inches for corner No. 1 of Lot No 1

Thence S 44° W

8 68 Set Stone 6 x 8 x 17 inches corner No. 2

Thence S 43° E

39 15 Set Stone 6 x 10 x 16 inches corner No. 3

Thence N 76° E

7 49 Set Stone 4 x 4 x 12 inches corner No 4

Thence N 20° E

CHAINS
LBS.

6 50 Set Stone 8 x 8 x 16 inches Corner No. 5

9 64 Set Stone Thence N 30° E

9 64 Set Stone 3 x 8 x 14 corner No. 6

Thence N 59° W

25 50 Set Stone 6 x 10 x 18 inches Corner No. 7

Thence N 54° W

24 55 To Place of Beginning Corner No. 1

Set No. 2

Beginning at the 1/4 Sec corner bet Sec 27 & 28

Thence N 88° W

11 70 a Pine Tree 26 inches diameter marked corner No. 2

Thence N 30° E

14 50 Set Stone 6 x 6 x 14 inches Corner No. 3

Thence South 61° E

4 72 Set Stone 6 x 10 x 16 inches Corner No. 4

Thence South var 20° E

10 60 To Place of Beginning the 1/4 Sec corner
between Sec 27 & 28

J. W. Kernbrill Deputy Co. Surveyor