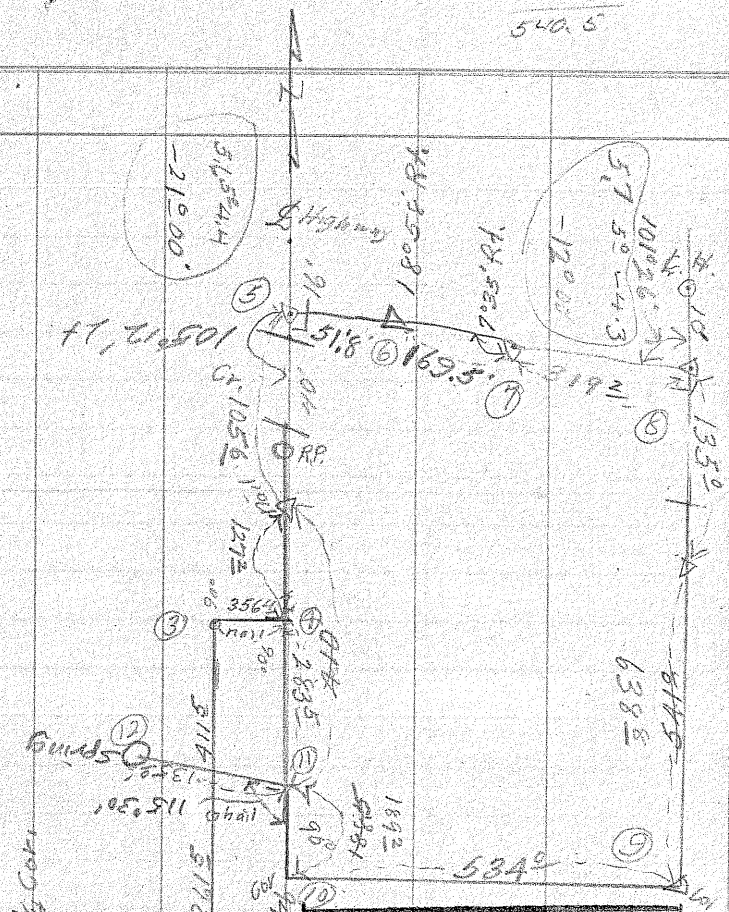


318.2  
 169.6  
 51.8  
 -----  
 540.5



**UNION COUNTY SURVEYOR**

Date Received \_\_\_\_\_

Date Filed 3-4-86

By \_\_\_\_\_

File No. NARRATIVE 1/6

SEE SURVEY 186

Oregon State Highway Commission

TRAVERSE SHEET

County \_\_\_\_\_ Section 2 T 5 S R 40 E W M. Calculated by \_\_\_\_\_  
 Highway \_\_\_\_\_ Line Walter Buckley Sheet No. \_\_\_\_\_ Checked by \_\_\_\_\_

STATE PRINTING DEPT.

STATION	CURVE DATA		Tan.	Sub. Tan.	P. I. to P. I.	Calculated Course	Cosine	Sine	LATITUDE		DEPARTURE		CO-ORDINATES	
	Degree	Angle							+N.	-S.	+E.	-W.	Lat.	Dep.
1						1070° E	0	1.0			1070 <sup>00</sup>		00 <sup>00</sup>	00 <sup>00</sup>
2						673° N	1.0	0	673 <sup>00</sup>				00 <sup>00</sup>	1070 <sup>00</sup>
3						356° E	0	1.0	0		356 <sup>40</sup>		673 <sup>00</sup>	1070 <sup>00</sup>
4						232° N	1.0	0.0	232 <sup>80</sup>		0		673 <sup>00</sup>	1426 <sup>40</sup>
5			✓			51° S 74° 51' E	26.13469	96.52449		13 <sup>54</sup>	50 <sup>00</sup>		905 <sup>80</sup>	1426 <sup>40</sup>
6						169° N 86° 11' E	0.665641	99.77821	112 <sup>8</sup>		169 <sup>12</sup>		892 <sup>26</sup>	1476 <sup>40</sup>
7						319° N 78° 36' E	19.76573	98.02712	63 <sup>09</sup>		312 <sup>90</sup>		903 <sup>54</sup>	1645 <sup>52</sup>
8			✓			766° S	1.0	0.0		766 <sup>33</sup>	00		966 <sup>63</sup>	1958 <sup>42</sup>
9						532° W	0	1.0			532 <sup>02</sup>		206 <sup>30</sup>	1958 <sup>42</sup>
10			✓			189° N	1.0		189 <sup>20</sup>		00		200 <sup>30</sup>	1426 <sup>40</sup>
11			✓			283° N	1.0		283 <sup>50</sup>				389 <sup>50</sup>	1426 <sup>40</sup>
4													673 <sup>00</sup>	1426 <sup>40</sup>
11						135° N 64° 30' W	43.05111	90.25853	58 <sup>12</sup>		121 <sup>85</sup>		389 <sup>50</sup>	1426 <sup>40</sup>
12													447 <sup>62</sup>	1304 <sup>55</sup>

**UNION COUNTY SURVEYOR**

---

Date Received \_\_\_\_\_

Date Filed 3-4-86

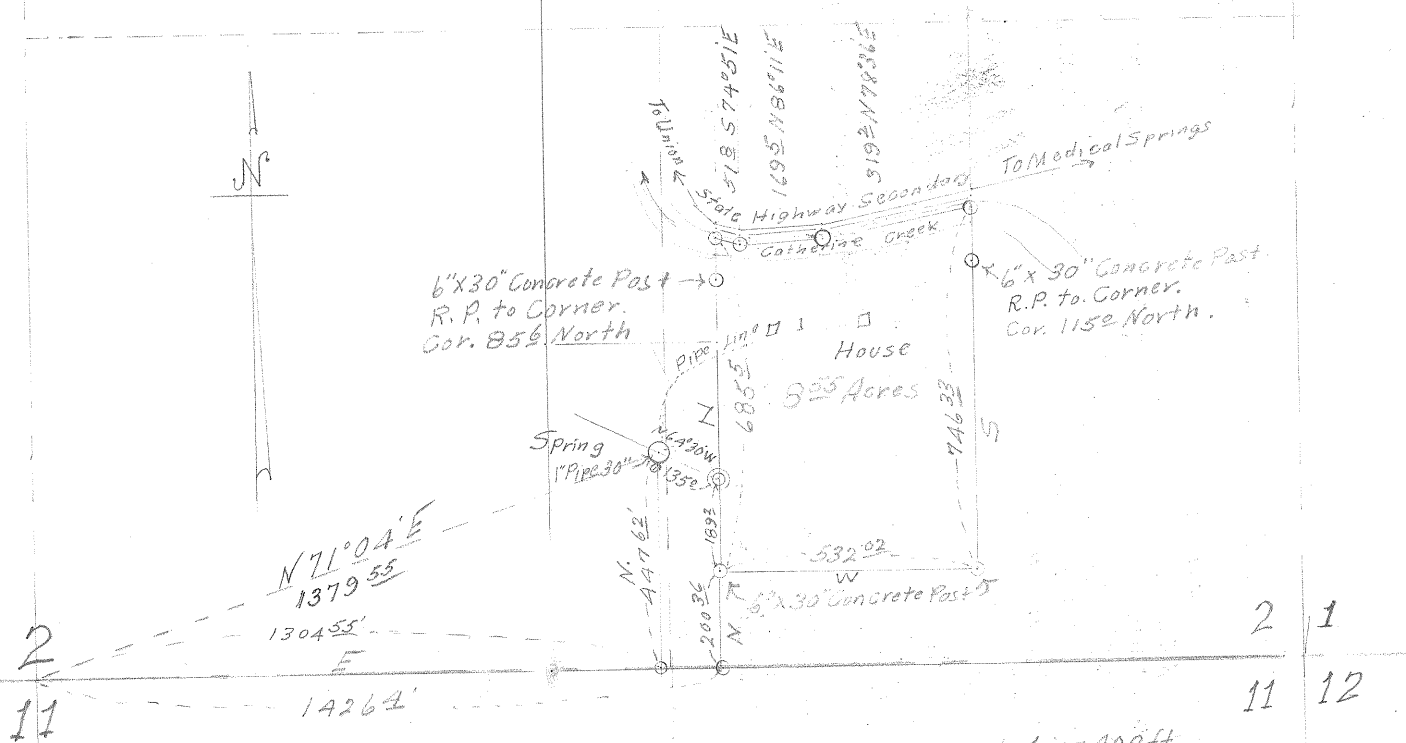
By \_\_\_\_\_

File No. NARRATIVE 1/6

SEE SURVEY 186

4123

T. 55 R. 40 E. W. M.



2  
11

2 1  
11 12

Scale 1 in = 400 ft.  
June 10, 1949

I S. B. Morgan of LaGrande, Oregon do hereby certify that this map was made from notes taken during an actual survey made by me on June 10, 1949; that the monument shown on this map consisting of a 1 inch pipe 36" long is 1375.6 ft N 71° 04' E from the 1/4 Section Corner 2 & 11 T. 55 R. 40 E. W. M.

S. B. Morgan

<b>UNION COUNTY SURVEYOR</b>	
Date Received _____	
Date Filed <u>3-4-86</u>	
By _____	
File No. <u>NARRATIVE 1/6</u>	

SEE SURVEY 186