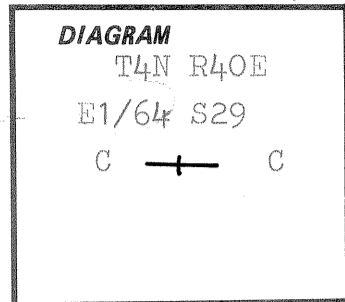


CERTIFIED RECORD OF LAND CORNER MONUMENTATION

Index File No. T-7-8

History of original corner establishment:

Not set.



NOTE: APPEARS TO BE  
W-E 1/64 C Sec. 29

BY G. LANGLITZ, DEP. CO. SURVEYOR

Description of corner evidence found:

None.

Some painted line trees on East side of corner position.

Corner falls in timbered area.

Description of monument and accessories | established to perpetuate the original location of this corner:

At surveyed point set 2 1/2" x 30" galvanized pipe with brass cap marked: Set pipe 25" in the ground.

T4N R40E  
E1/64 S29  
C —+— C

No rock in the area.

OR PLS 1051  
1978

From which: A Tamarac 14" in dia. bears N10°E, 26.9 feet, scribed CE1/64S29BT. A Tamarac 12" in dia. bears S06°W, 14.0 feet, scribed CE1/64S29BT. Painted blazes red and 6" red band around. Placed 54-3s and 54-4s on BTs. Placed brass washer stamped PLS 1051 on foot blazes. Placed 54-2 and 54-4 on steel fence post 3' South and 54-2 and 54-9 on steel fence post 4' East of corner. Placed 54-5 on tree 5' South of corner.

I hereby certify that the above corner monument was reestablished as herein described.

Witnesses: David L. Landers  
Dan T. Rowland

October 24, 1978

REGISTERED  
PROFESSIONAL  
LAND SURVEYOR

*Barry B. Barbour*

OREGON  
OCT. 17, 1975  
BARRY B. BARBOUR  
1051

Office of... County Surveyor... County of... Union...  
State of... Oregon... I hereby certify that the within instrument was filed in this office  
for record on the... 20... day of... November... , 19... 78

..... by .....  
(COUNTY OFFICIAL) (DEPUTY)

UNION COUNTY  
SURVEYOR

Date Received 109-509

Date Filed \_\_\_\_\_

By  
NARRATIVE DRAWER  
File No. 1/3

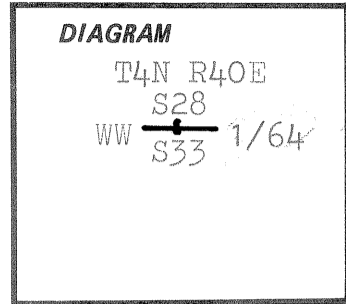
REFER TO Survey 144-78

CERTIFIED RECORD OF LAND CORNER MONUMENTATION

Index File No. V-9-10

History of original corner establishment:

Not set.



Description of corner evidence found:

Line trees marked with red blazes.

Survey point is SE of a fence corner.

Corner is about 50' North of main road.

Description of monument and accessories established to perpetuate the original location of this corner:

At surveyed point set 2 1/2" x 30" galvanized pipe with brass cap marked: Set pipe 25" in the ground.

T4N R40E  
 S28  
 WW  $\frac{1}{64}$   
 S33  
 OR PLS 1051  
 1978

No rock in the area.

From which: A Lodgepole Pine 15" in dia. bears S46°E, 108.9 feet, (South side of road) scribed WW1/64S33BT. A Tamarac 16" in dia. bears N40°W, 54.3 feet, scribed WW1/64S28BT. Painted blazes red and 6" red band around. Placed 54-3s and 54-4s on BTs. Placed brass washer stamped PLS 1051 on foot blazes. Placed 54-2 and 54-4 on steel fence post 3' North and 54-2 and 54-9 on steel fence post 4' West of corner. Placed 54-5 on tree 30' West of corner.

I hereby certify that the above corner monument was reestablished as herein described.

Witnesses: David L. Landers  
Dan T. Rowland

October 20, 1978



Office of... County Surveyor..... County of... Union.....  
 State of... Oregon....., I hereby certify that the within instrument was filed in this office  
 for record on the... 20... day of... November....., 19.78

(COUNTY OFFICIAL)

(DEPUTY)

Form R6-7100-57 (9/71)

UNION COUNTY  
 SURVEYOR

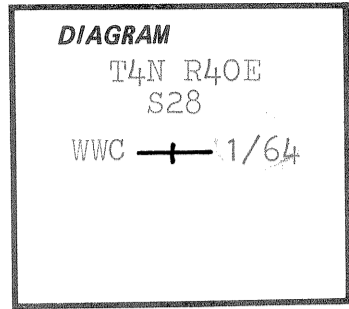
Date Received.....  
 Date Filed.....  
 By  
 NARRATIVE DRAWING 1/3

REFER TO SURVEY 144-78

CERTIFIED RECORD OF LAND CORNER MONUMENTATION

Index File No. T-9-10

History of original corner establishment:  
Not set.



Description of corner evidence found:  
None.

Corner falls about 250' West of main road.

Description of monument and accessories I established to perpetuate the original location of this corner:

At surveyed point set 2 1/2" x 30" galvanized pipe with brass cap marked: Set pipe 24" in the ground.

No rock in the area.

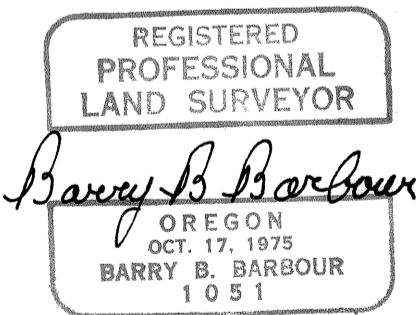
From which: A Tamarac 15" in dia. bears S58°W, 8.7 feet, scribed WWC1/64S28BT. A Tamarac 12" in dia. bears N54°W 26.7 feet, scribed WWC1/64S28BT. Painted blazes red and 6" red band around. Placed 54-3s and 54-4s on BTs. Placed brass washer stamped PLS 1051 on foot blazes. Placed 54-2 and 54-4 on steel fence post 5' South and 54-2 and 54-9 on steel fence post 5' East of corner. Placed 54-5 on tree 2' North of corner.

T4N R40E  
S28  
WWC —+ C1/64  
OR PLS 1051  
1978

I hereby certify that the above corner monument was reestablished as herein described.

Witnesses: David L. Landers  
Dan T. Rowland

October 16, 1978



Office of.....County Surveyor..... County of.....Union.....  
State of.....Oregon....., I hereby certify that the within instrument was filed in this office  
for record on the...20... day of November....., 1978

..... by .....  
(COUNTY OFFICIAL) (DEPUTY)

Form R6-7100-57 (9/71)

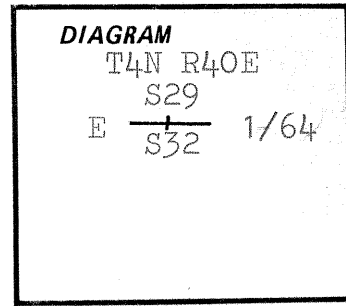
REFER TO SURVEY 144-78

**UNION COUNTY SURVEYOR**  
Date Received \_\_\_\_\_  
Date Filed \_\_\_\_\_  
By \_\_\_\_\_  
NARRATIVE DRAWING 1/3  
File No. \_\_\_\_\_

CERTIFIED RECORD OF LAND CORNER MONUMENTATION

Index File No. V-7-8

History of original corner establishment:  
Not set.



NOTE: APPEARS TO BE THE W-E  $\frac{1}{64}$   $\frac{29}{32}$   
BY G. LANGLITZ, DEP. CO.  
SURVEYOR

Description of corner evidence found:

Corner falls SW of a fence corner and about 70' North of main road.

Noncorner evidence in area.

Description of monument and accessories established to perpetuate the original location of this corner:

At surveyed point set 2 1/2" x 30" galvanized pipe with brass cap marked: Set pipe 25" in the ground.

T4N R40E  
S29  
E  $\frac{1}{32}$  1/64  
OR PLS 1051  
1978

No rock in the area.

From which: A Lodgepole Pine 20" in dia. bears S58°E, 75.0 feet, scribed, E1/64S32BT. A Tamarac 9" in dia. bears N21°W, 65.0 feet, scribed, E1/64S29BT. Painted blazes red and 6" red band around. Placed 54-3s and 54-4s on BTs. Placed brass washer stamped PLS 1051 on foot blazes. Placed 54-2 and 54-4 on steel fence post 3' North and 54-2 and 54-9 on steel fence post 3' West of corner. Placed 54-5 on tree 15' North of corner.

I hereby certify that the above corner monument was reestablished as herein described.

Witnesses: David L. Landers  
Dan T. Rowland

October 27, 1978

REGISTERED  
PROFESSIONAL  
LAND SURVEYOR

*Barry B. Barbour*

OREGON  
OCT. 17, 1975  
BARRY B. BARBOUR  
1051

Office of... County Surveyor... County of... Union

State of... Oregon... I hereby certify that the within instrument was filed in this office for record on the... 20 day of... November... 19... 78

..... by .....  
(COUNTY OFFICIAL) (DEPUTY)

UNION COUNTY SURVEYOR

GPO 799-509

Date Received \_\_\_\_\_

Date Filed \_\_\_\_\_

By \_\_\_\_\_

NARRATIVE DRAWER 1/3

File No. \_\_\_\_\_