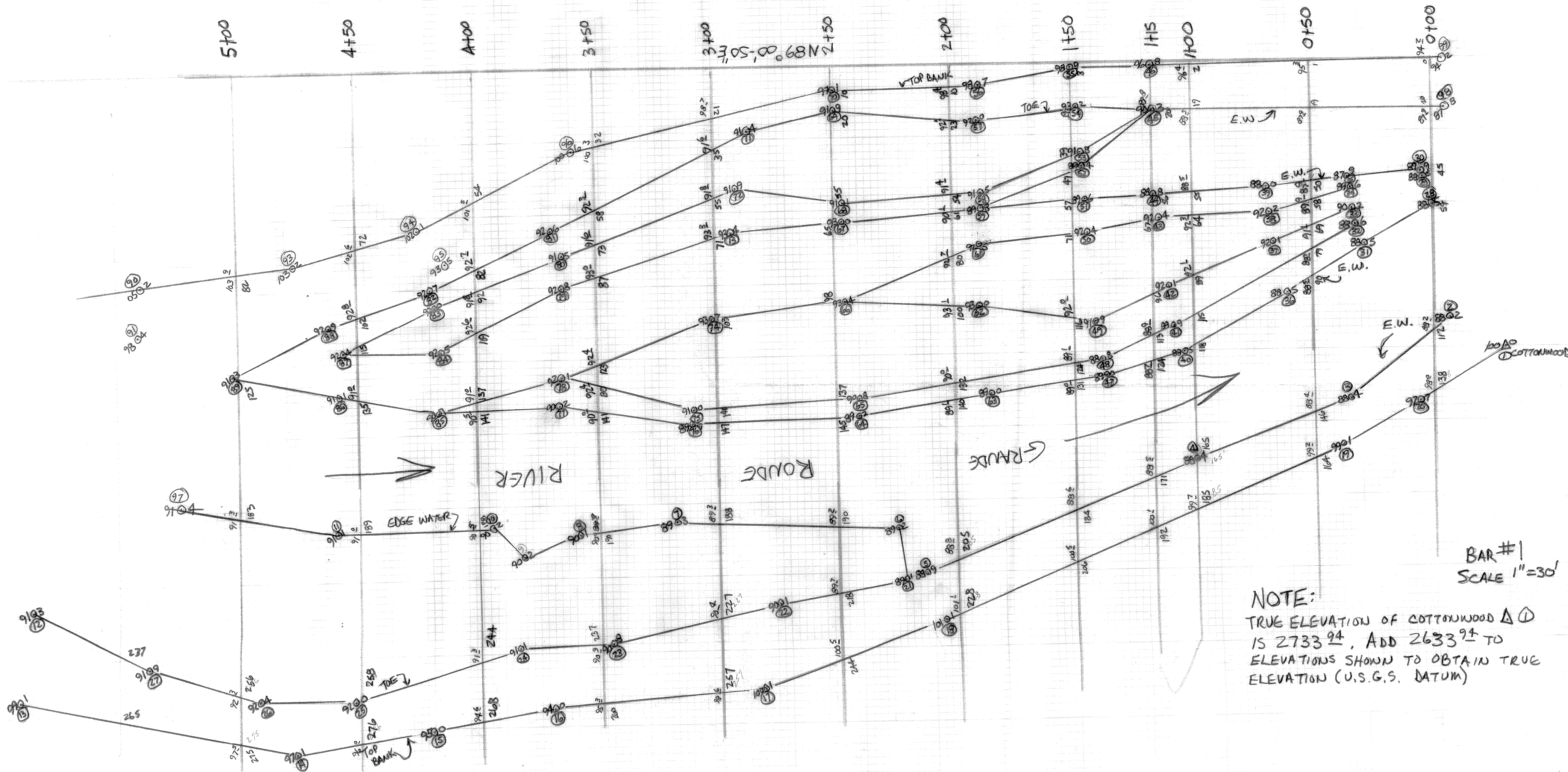


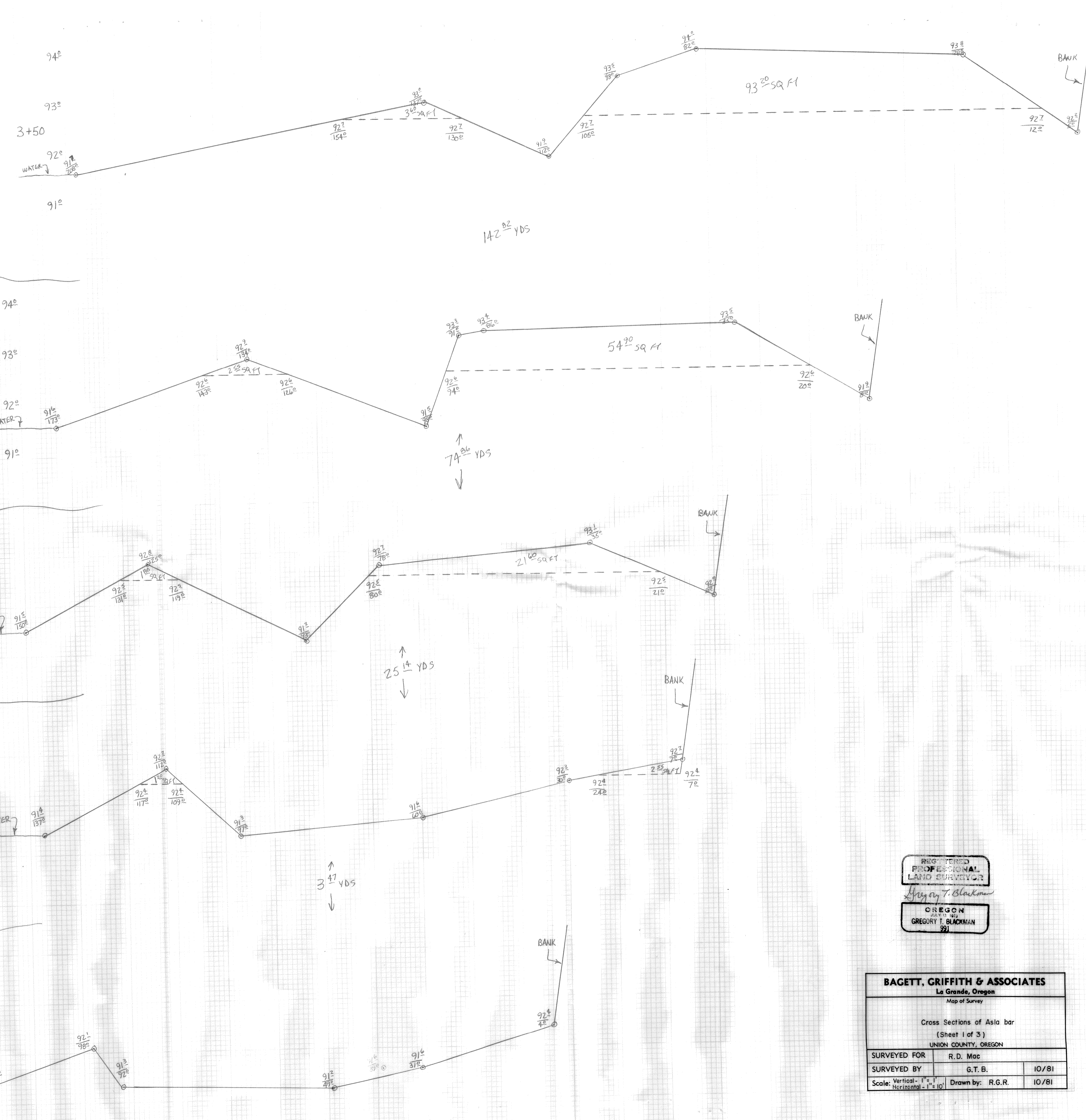
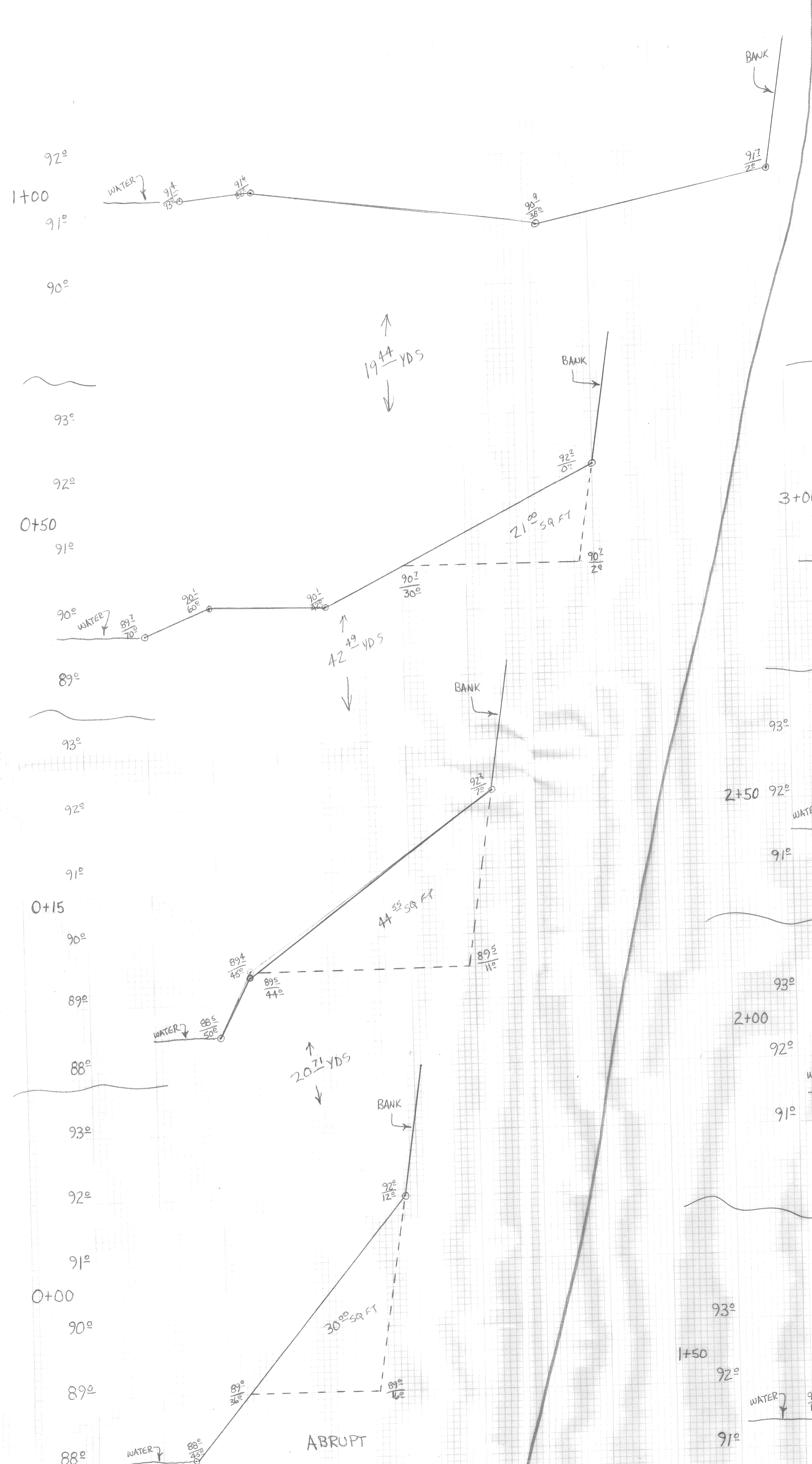
BAR #3
SCALE 1"=30'

NOTE:
TRUE ELEVATION OF EVEREST Δ ① IS 2746.26
ADD 2646.26 TO ELEVATIONS SHOWN TO OBTAIN
TRUE ELEVATION (U.S.G.S. DATUM)



NOTE:
 TRUE ELEVATION OF COTTONWOOD Δ ①
 IS 2733.94', ADD 2633.94' TO
 ELEVATIONS SHOWN TO OBTAIN TRUE
 ELEVATION (U.S.G.S. DATUM)

BAR #1
 SCALE 1"=30'



REGISTERED
PROFESSIONAL
LAND SURVEYOR
Gregory T. Blackman
OREGON
JAN 13, 1974
GREGORY T. BLACKMAN
991

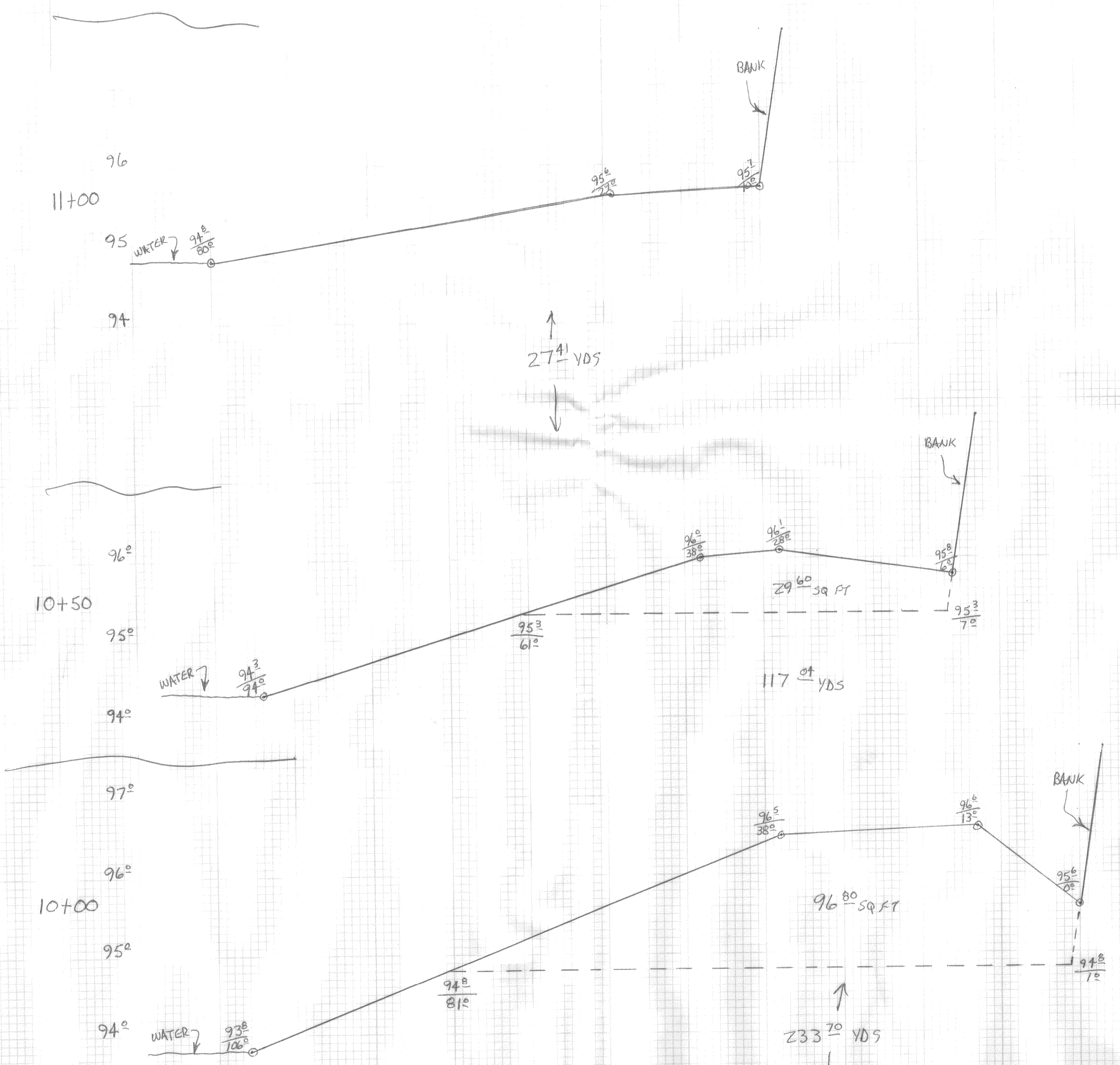
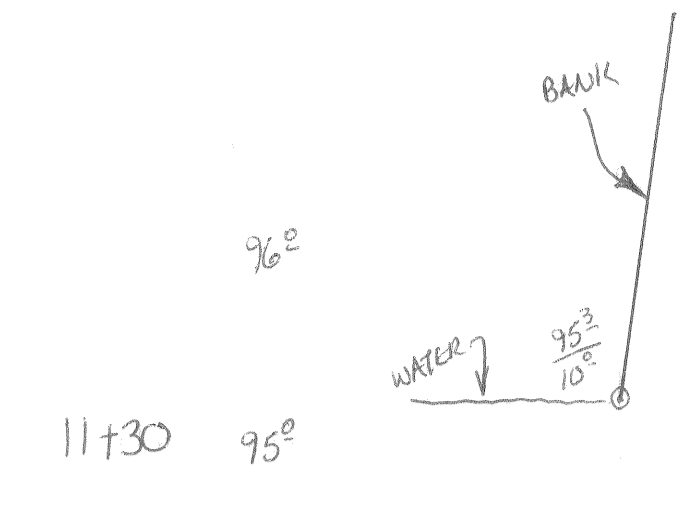
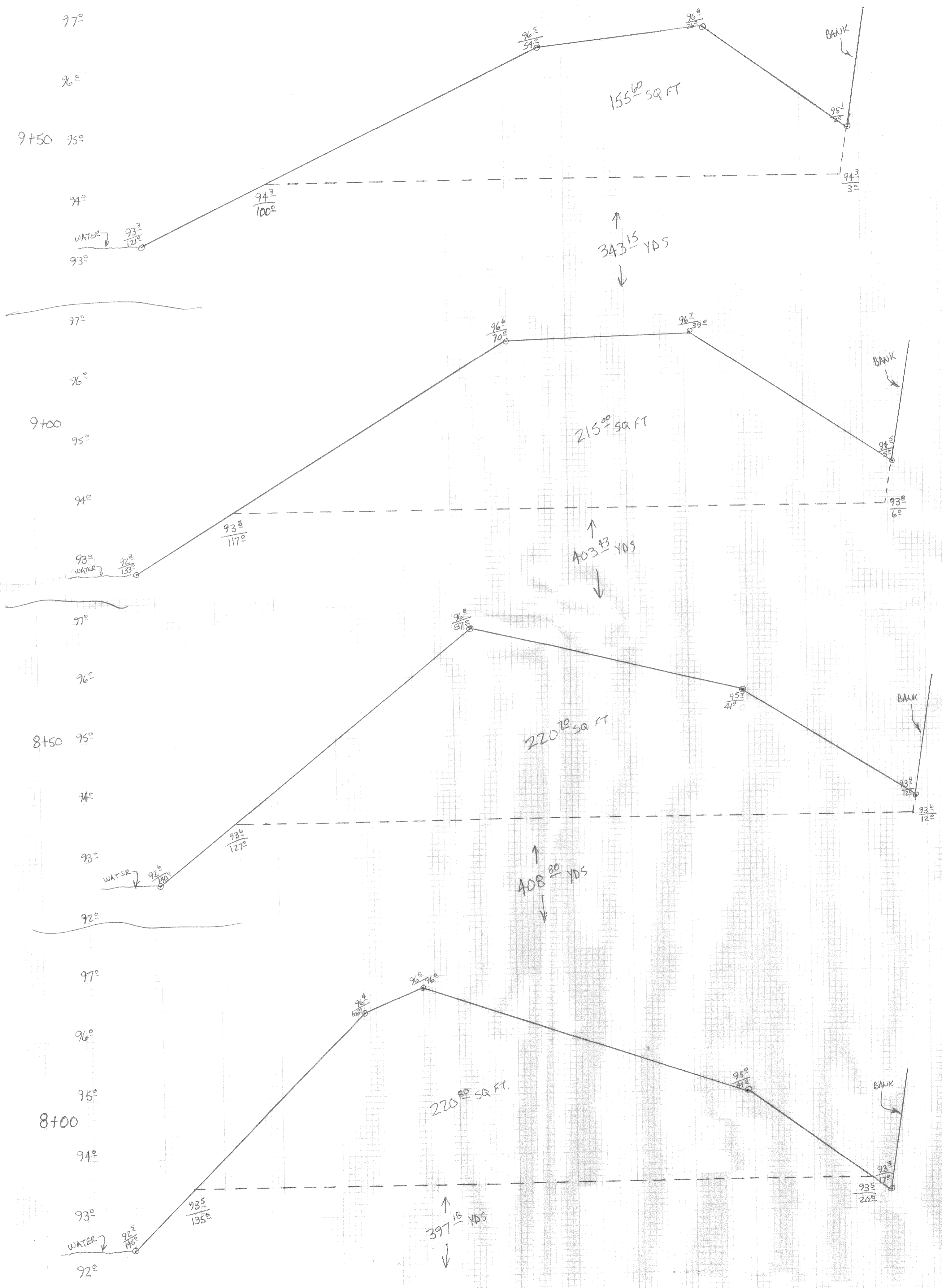
BAGETT, GRIFFITH & ASSOCIATES		
La Grande, Oregon		
Map of Survey		
Cross Sections of Asla bar (Sheet 1 of 3)		
UNION COUNTY, OREGON		
SURVEYED FOR	R.D. Mac	
SURVEYED BY	G.T.B.	10/81
Scale: Vertical - 1" = 1'	Horizontal - 1" = 10'	Drawn by: R.G.R. 10/81



REGISTERED
PROFESSIONAL
LAND SURVEYOR

Gregory T. Blackman
OREGON
GREGORY T. BLACKMAN
591

BAGETT, GRIFFITH & ASSOCIATES		
La Grande, Oregon Map of Survey		
Cross Sections of Asla bar (Sheet 2 of 3)		
UNION COUNTY, OREGON		
SURVEYED FOR	R. D. Mac	
SURVEYED BY	G.T.B.	10/85
Scale: Vertical - 1" = 1'	Horizontal - 1" = 10'	Drawn by: R.G.R. 10/85

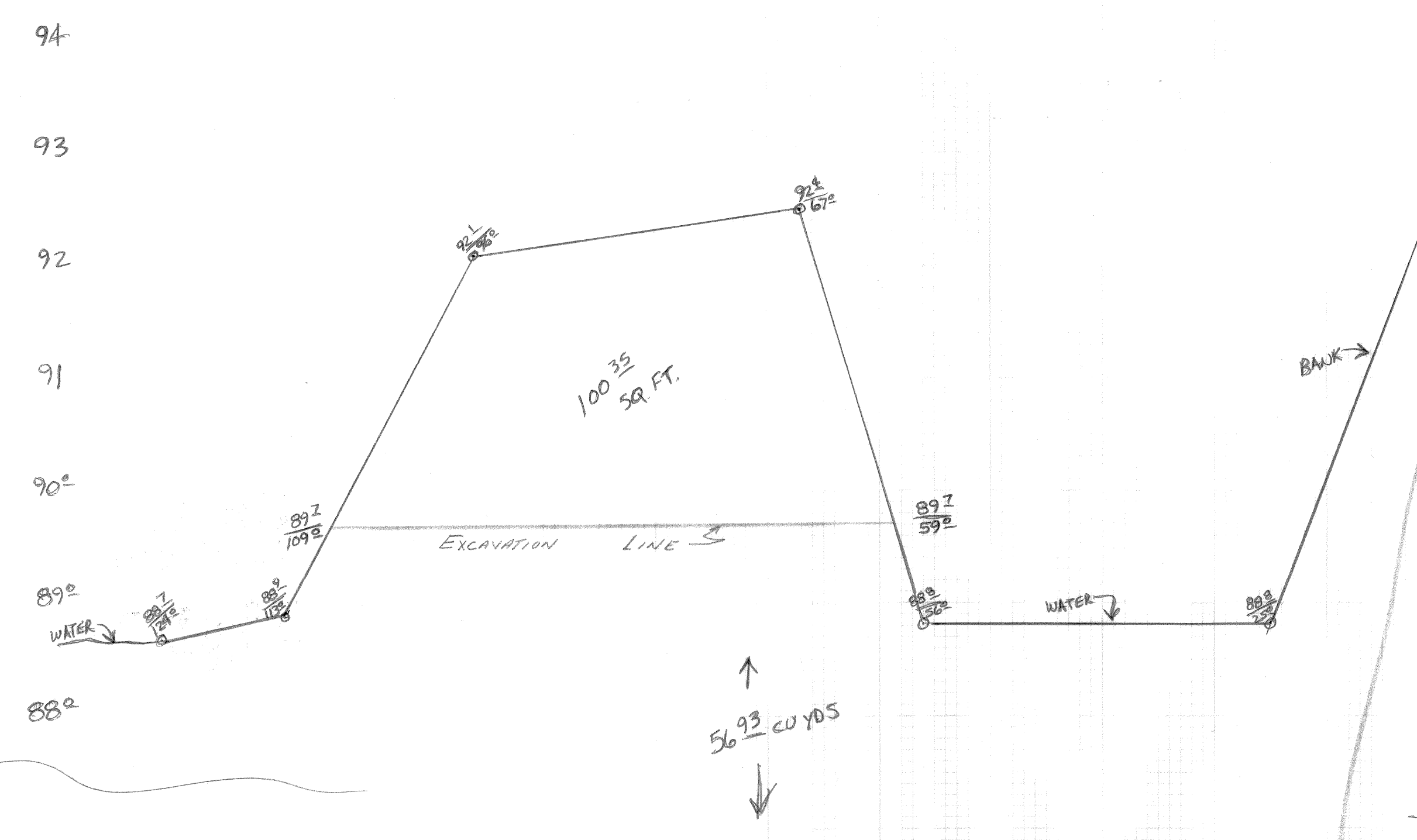


REGISTERED
 PROFESSIONAL
 LAND SURVEYOR

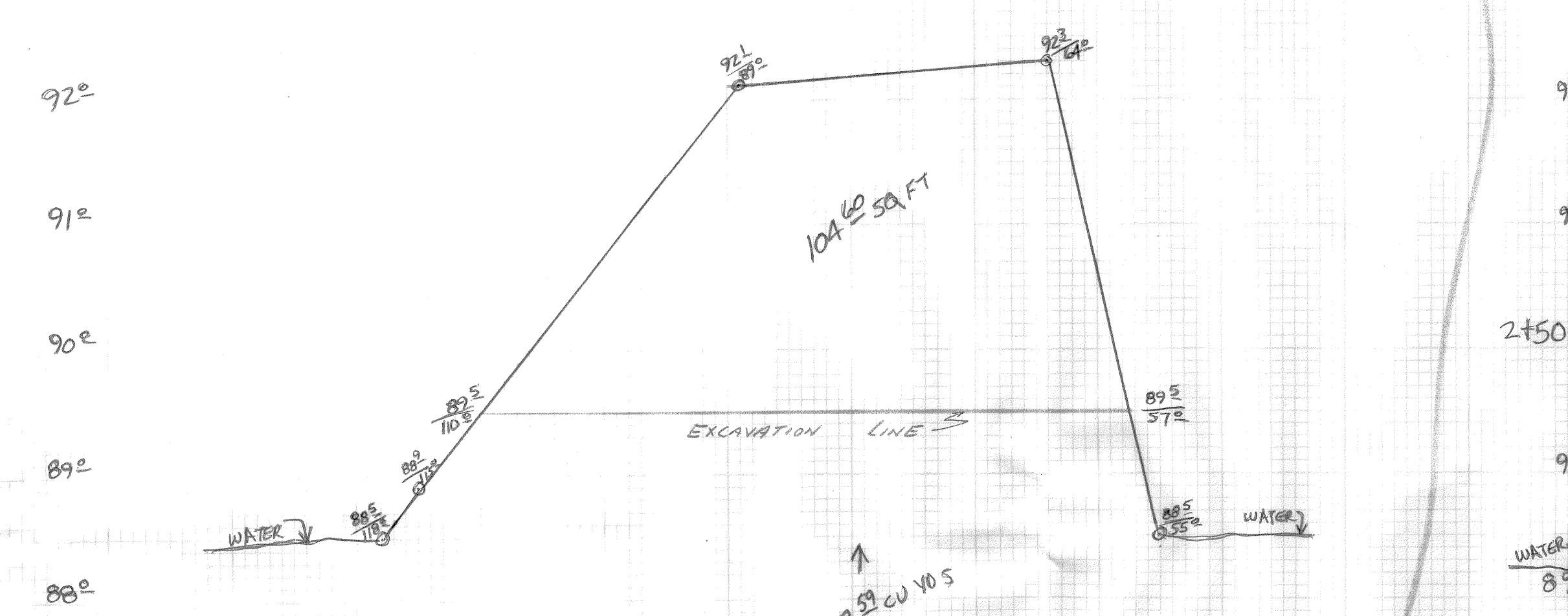
GREGORY T. BLACKMAN
 391

BAGETT, GRIFFITH & ASSOCIATES La Grande, Oregon Map of Survey		
Cross Sections of Asla bar (Sheet 3 of 3) UNION COUNTY, OREGON		
SURVEYED FOR	R. D. Mac	
SURVEYED BY	G. T. B.	10/85
Scale: Vertical - 1"=1'	Horizontal - 1"=10'	Drawn by: R.G.R. 10/85

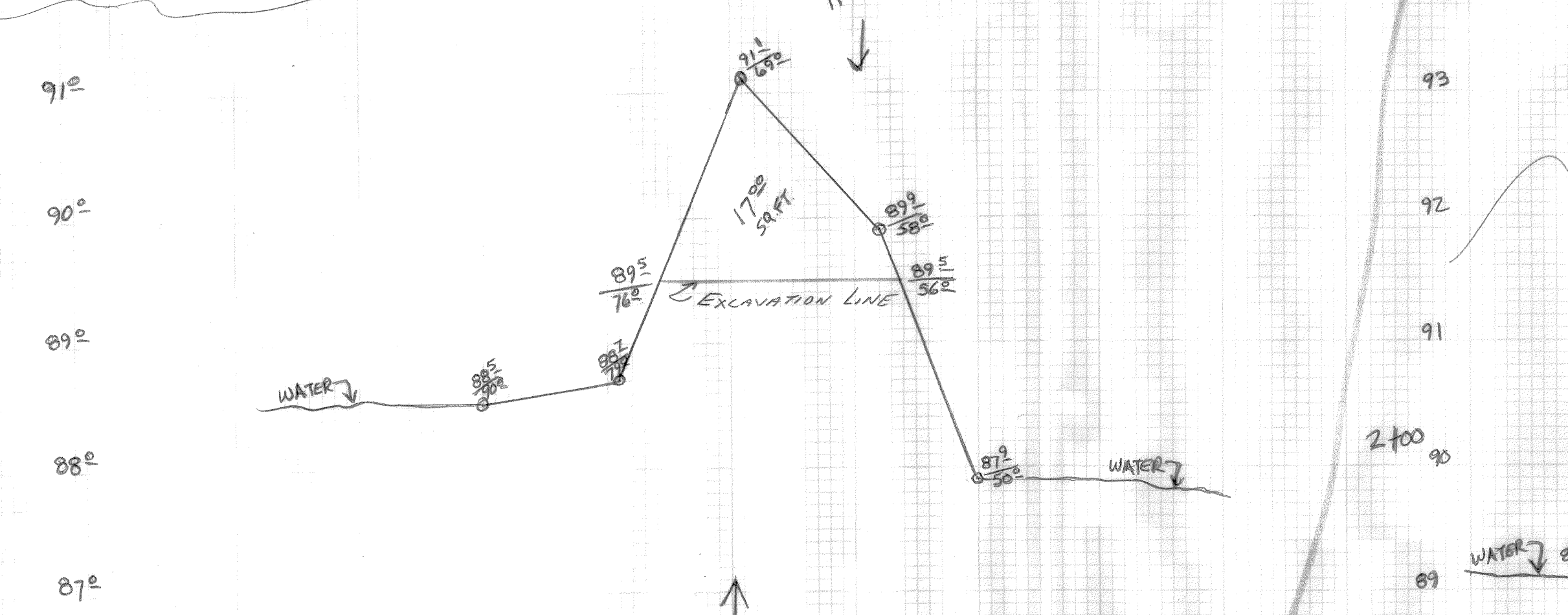
145



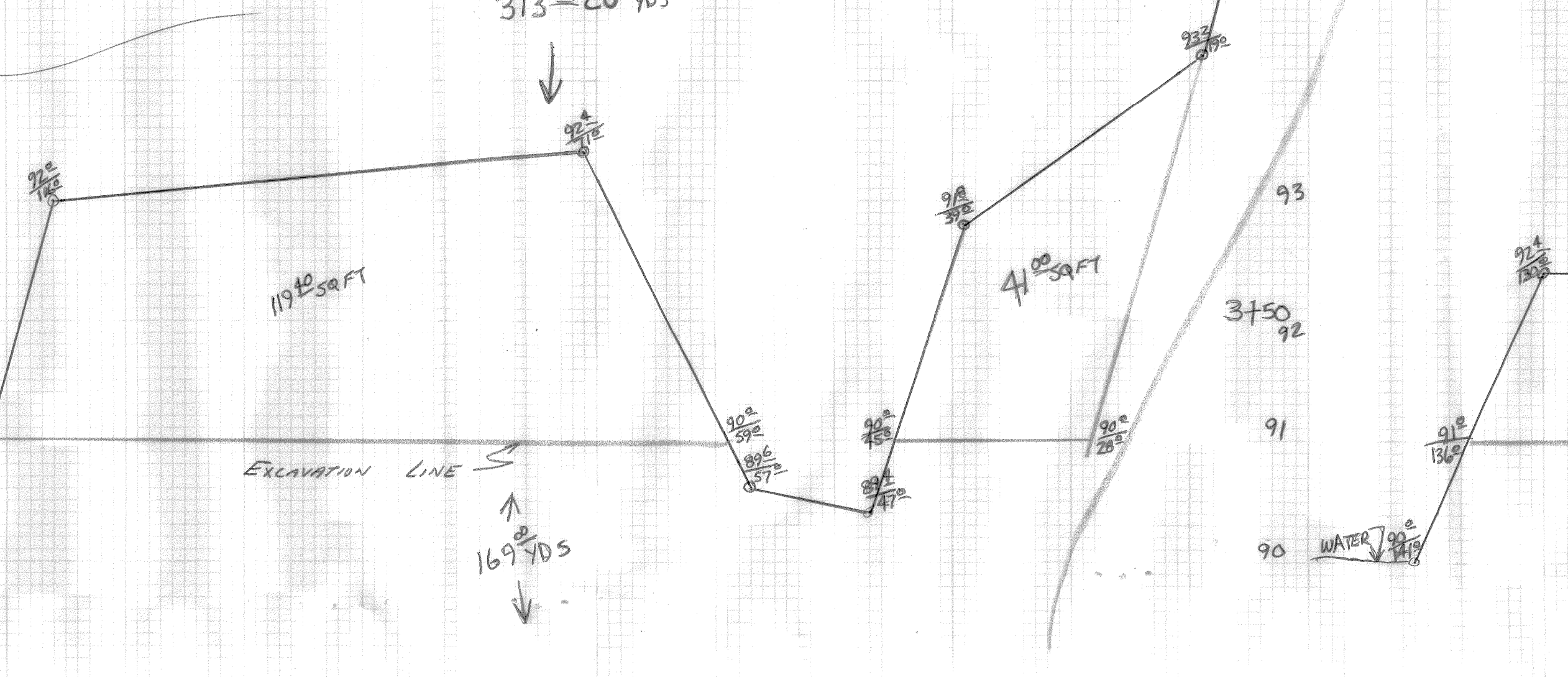
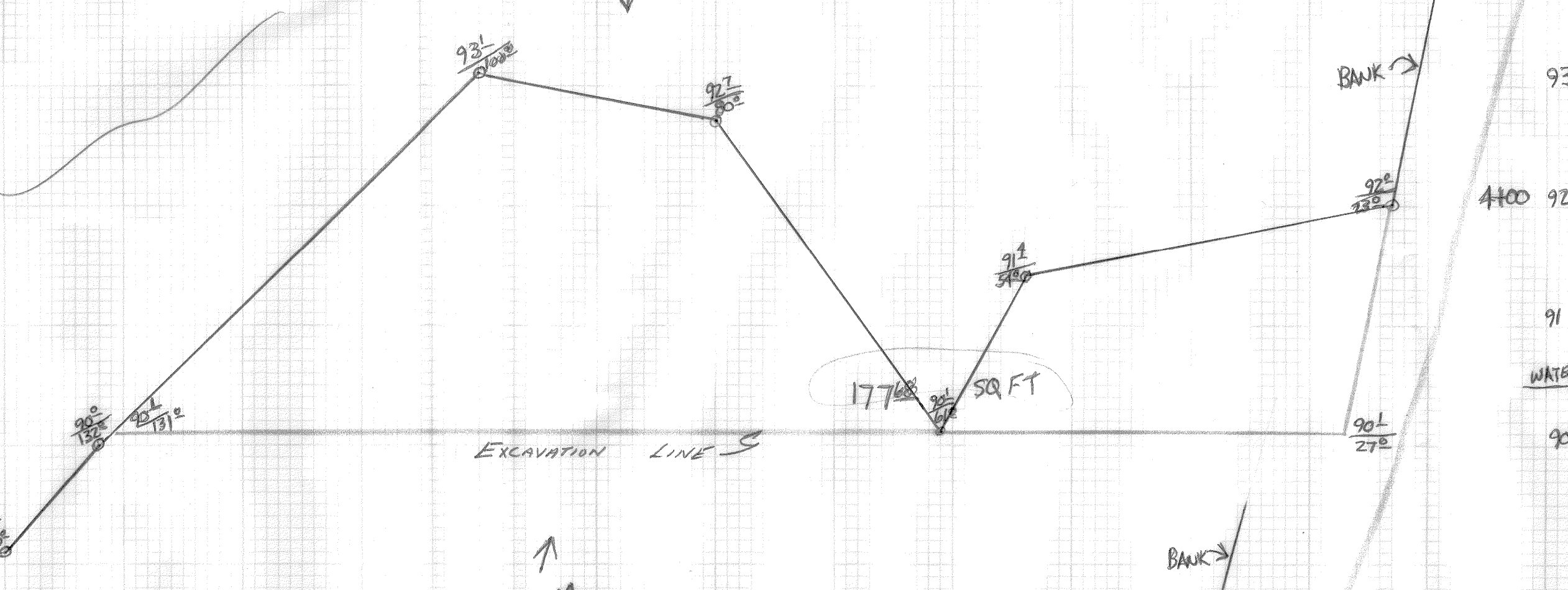
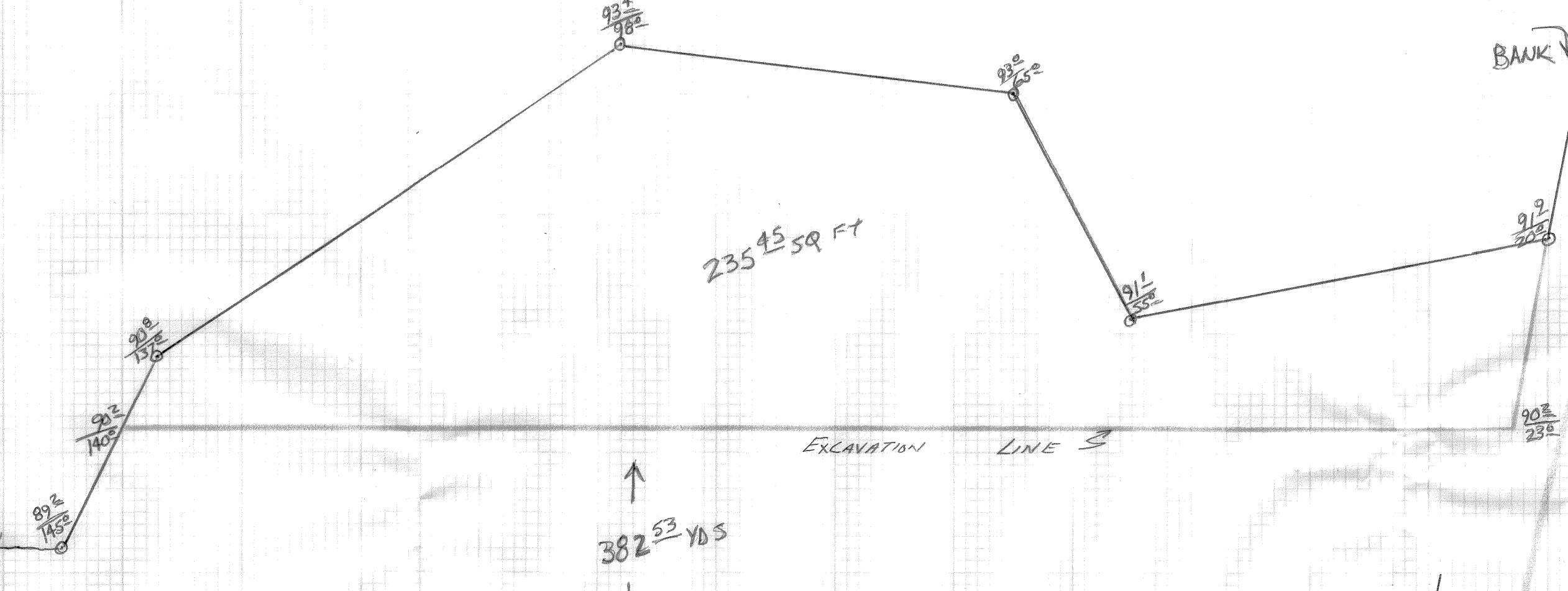
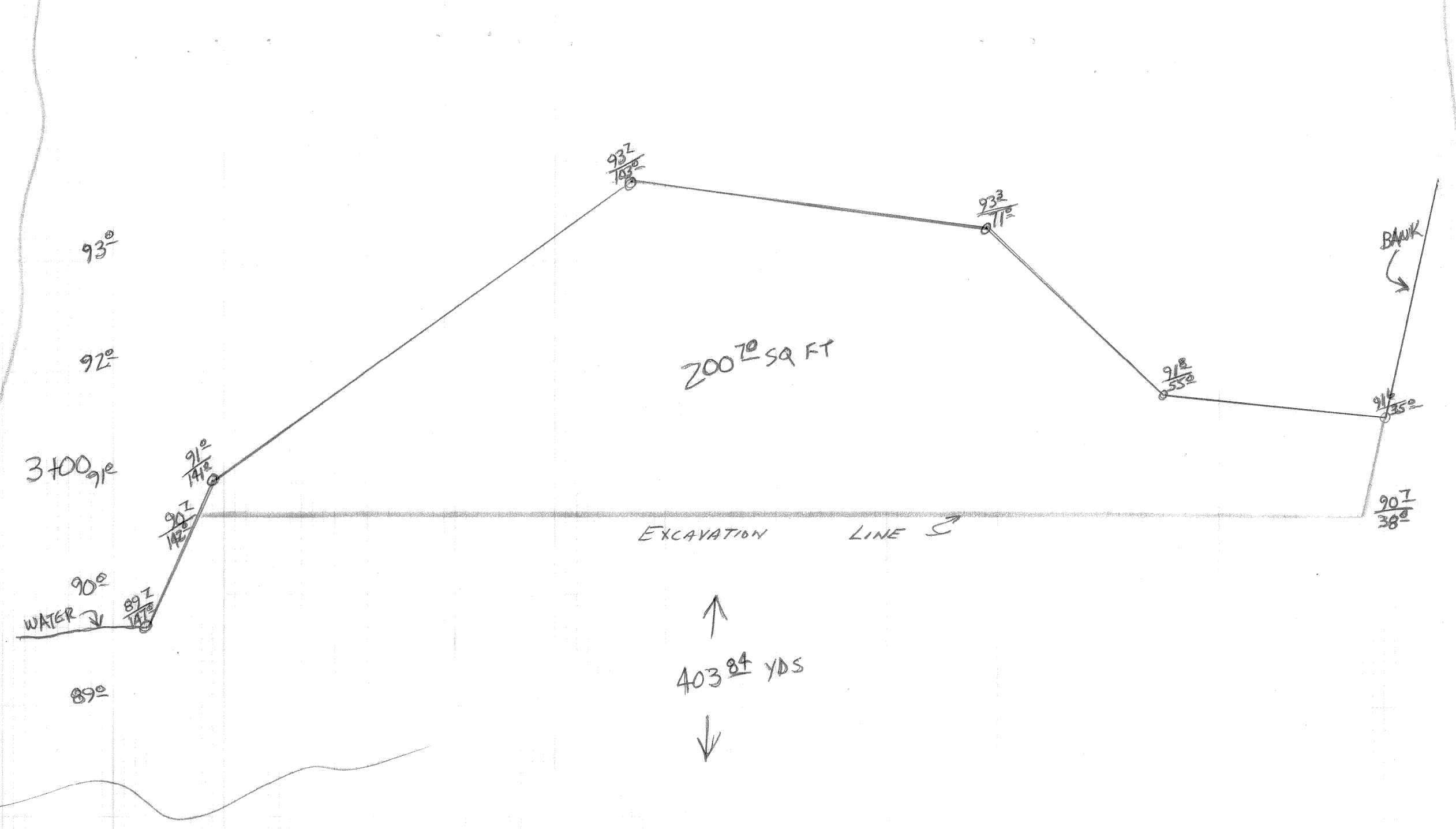
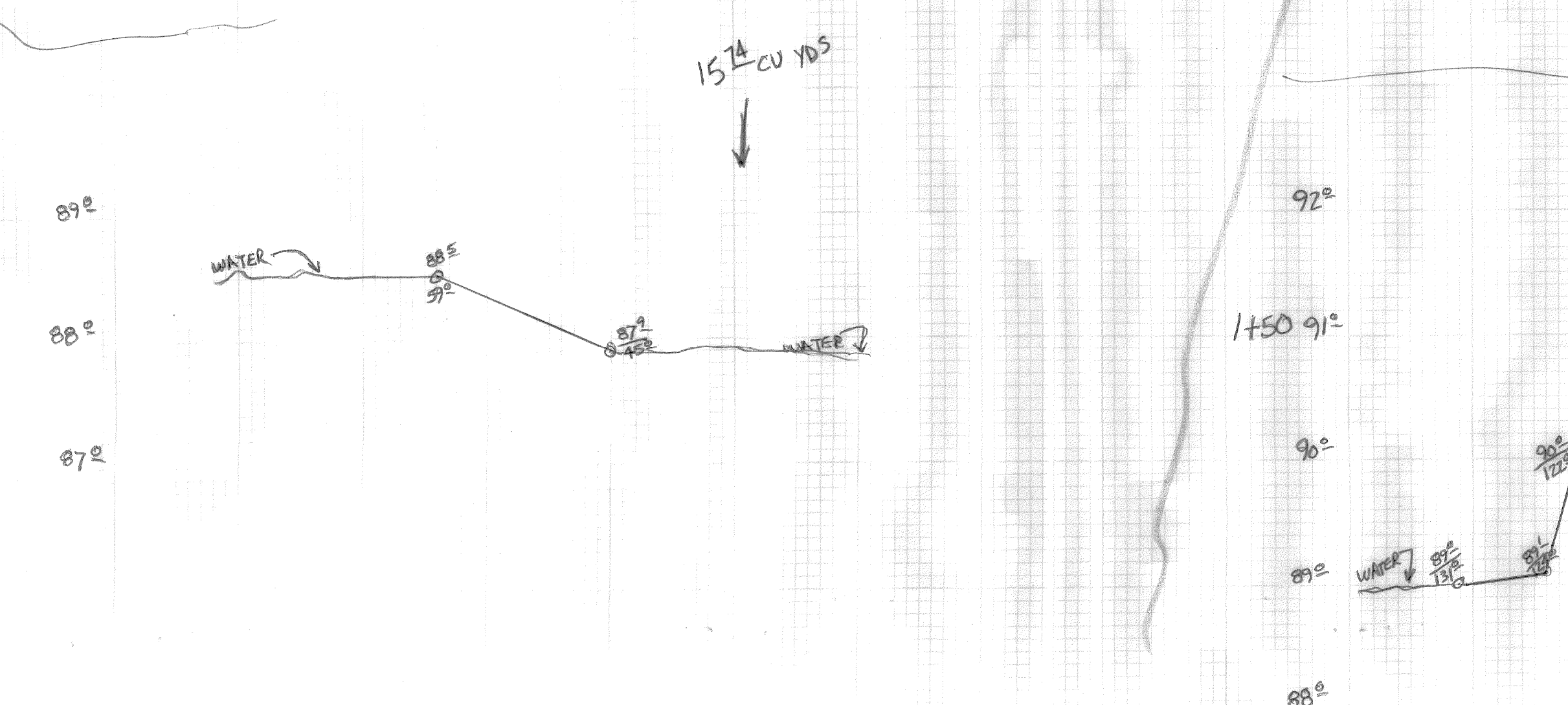
140



0+50



0+00

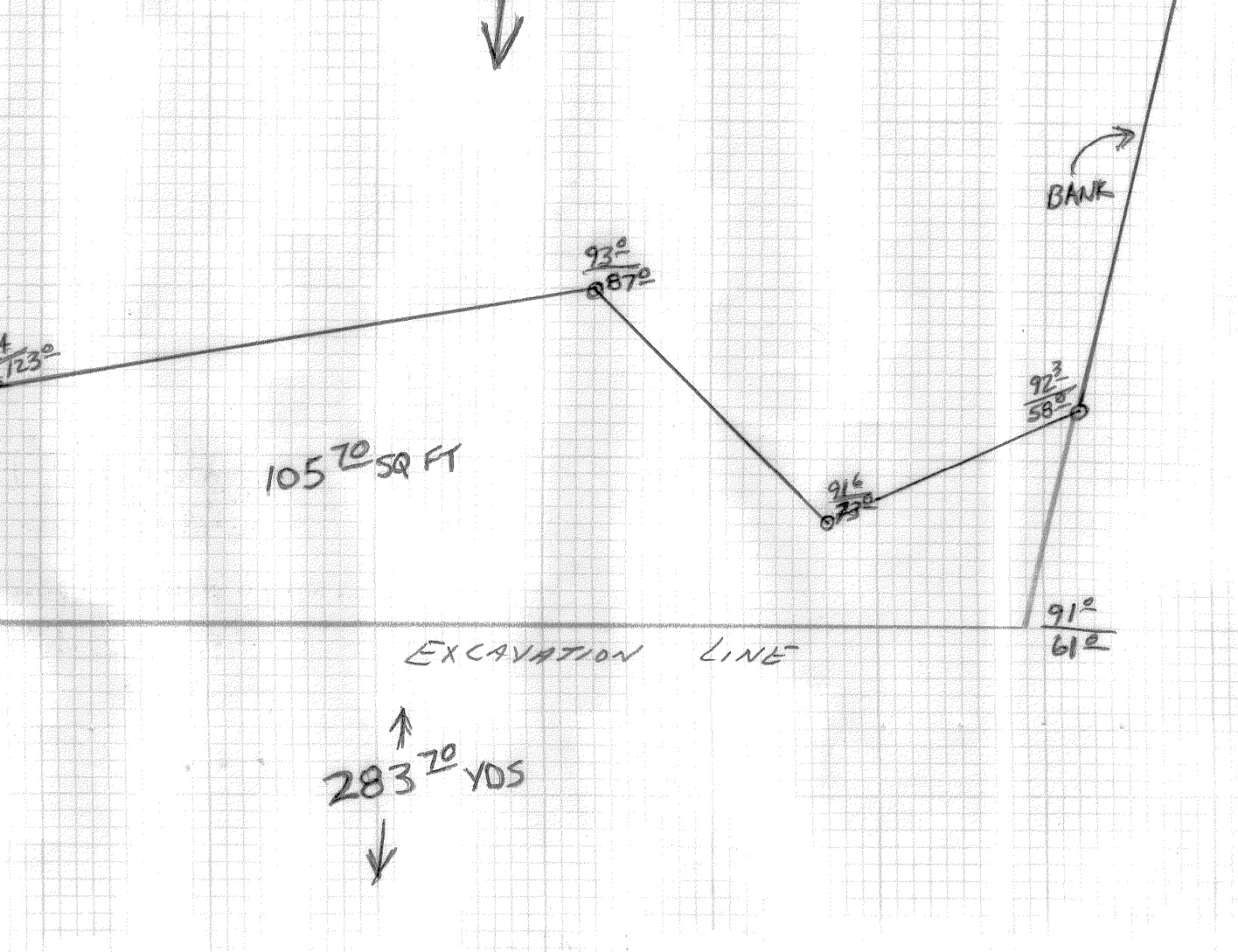
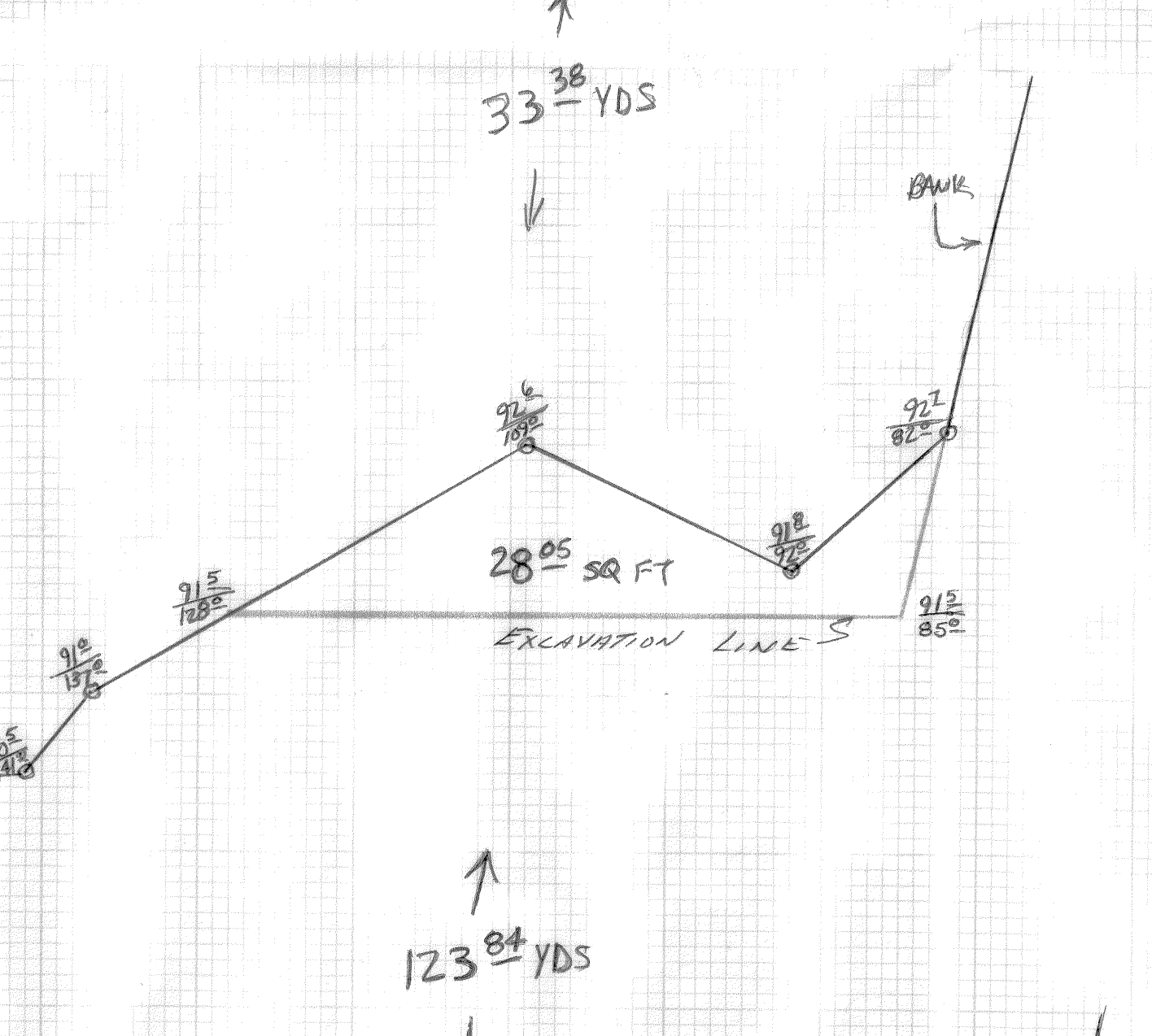
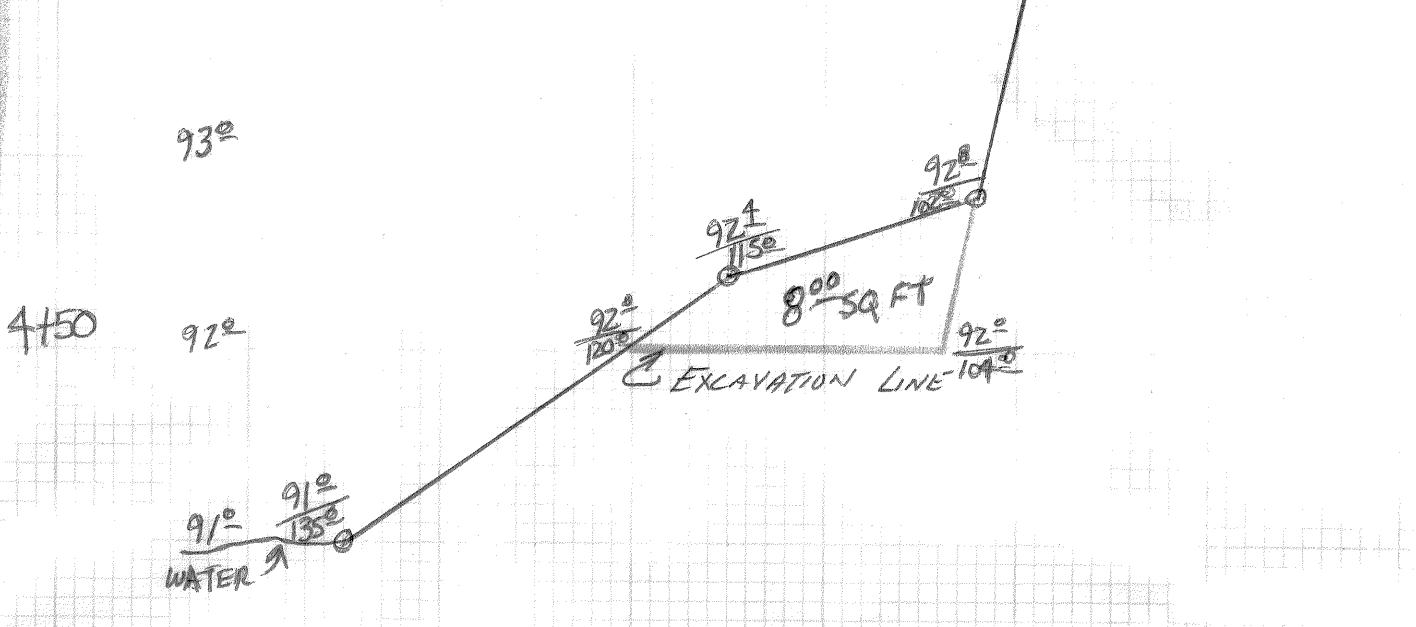


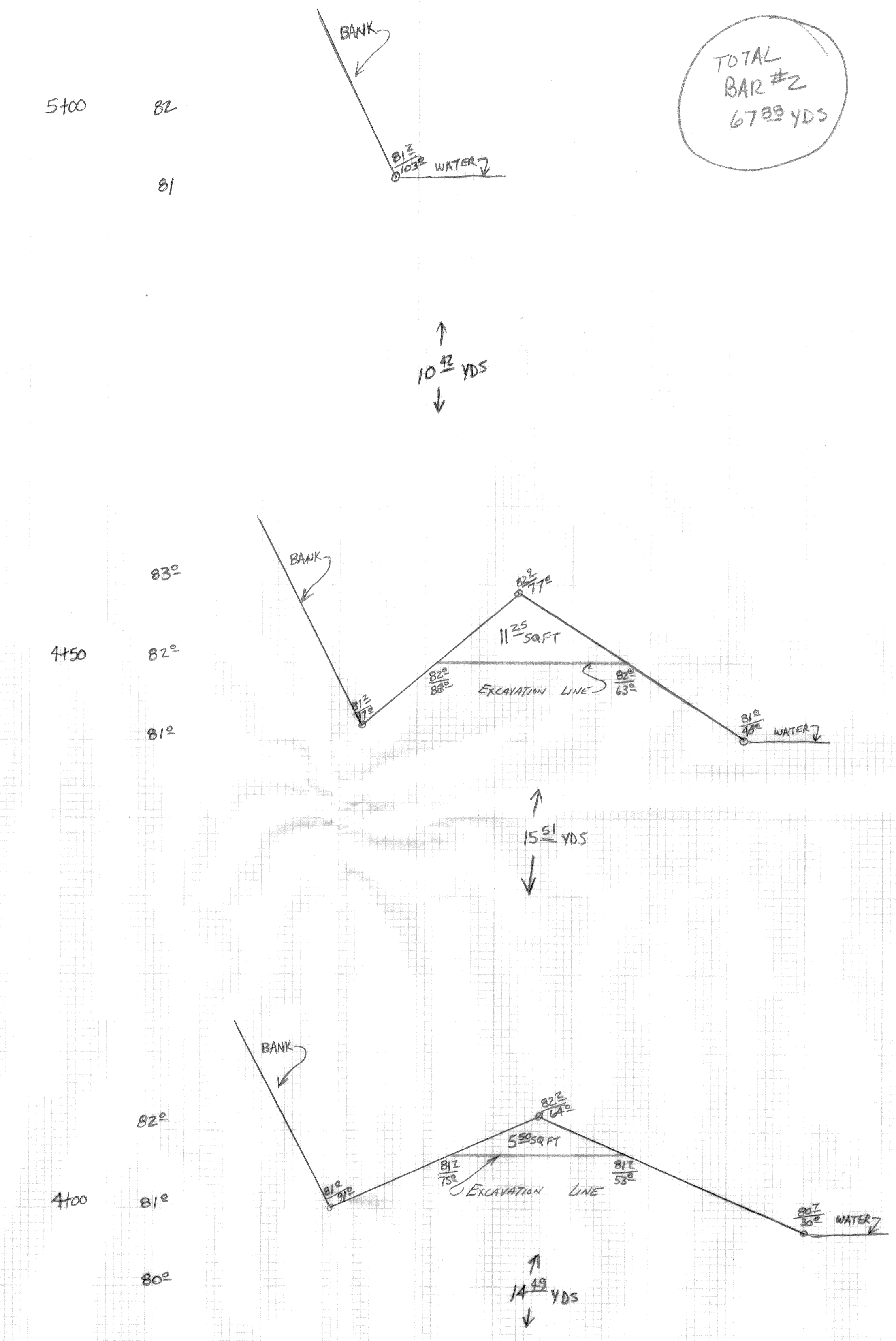
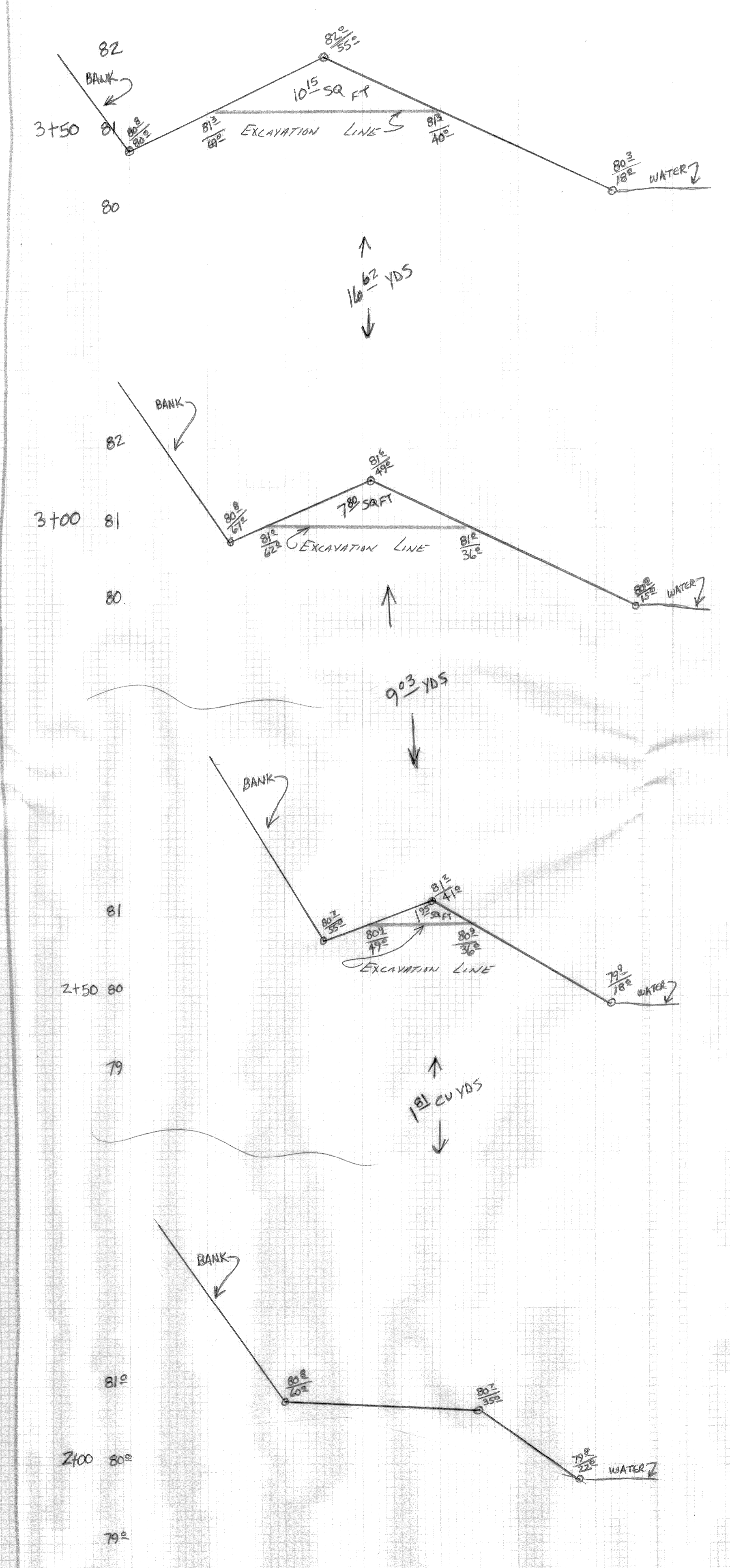
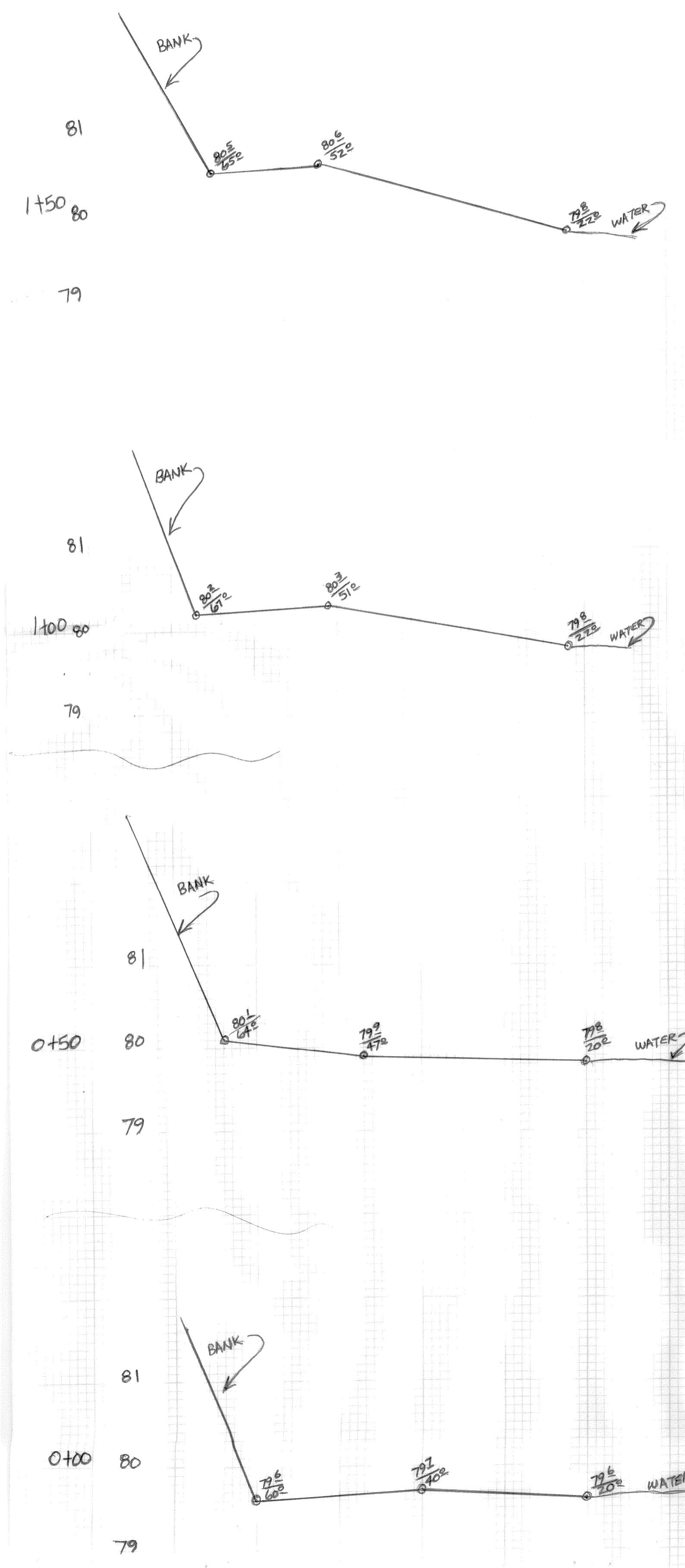
5700
 BAR #1
 TOTAL
 1902 CU YDS

BAGETT, GRIFFITH & ASSOCIATES La Grande, Oregon		
Cross Sections of Bar 1		
UNION COUNTY, OREGON		
SURVEYED FOR	R.D. Mac	
SURVEYED BY	G.T.B.	9/85
Scale: Vertical-1"=10'	Horizontal-1"=10'	Drawn by: R.G.R. 9/85

REGISTERED
 PROFESSIONAL
 LAND SURVEYOR
 Gregory T. Blackman
 OREGON
 JULY 13 1970
 GREGORY T. BLACKMAN
 291

↑
 741 YDS
 ↓

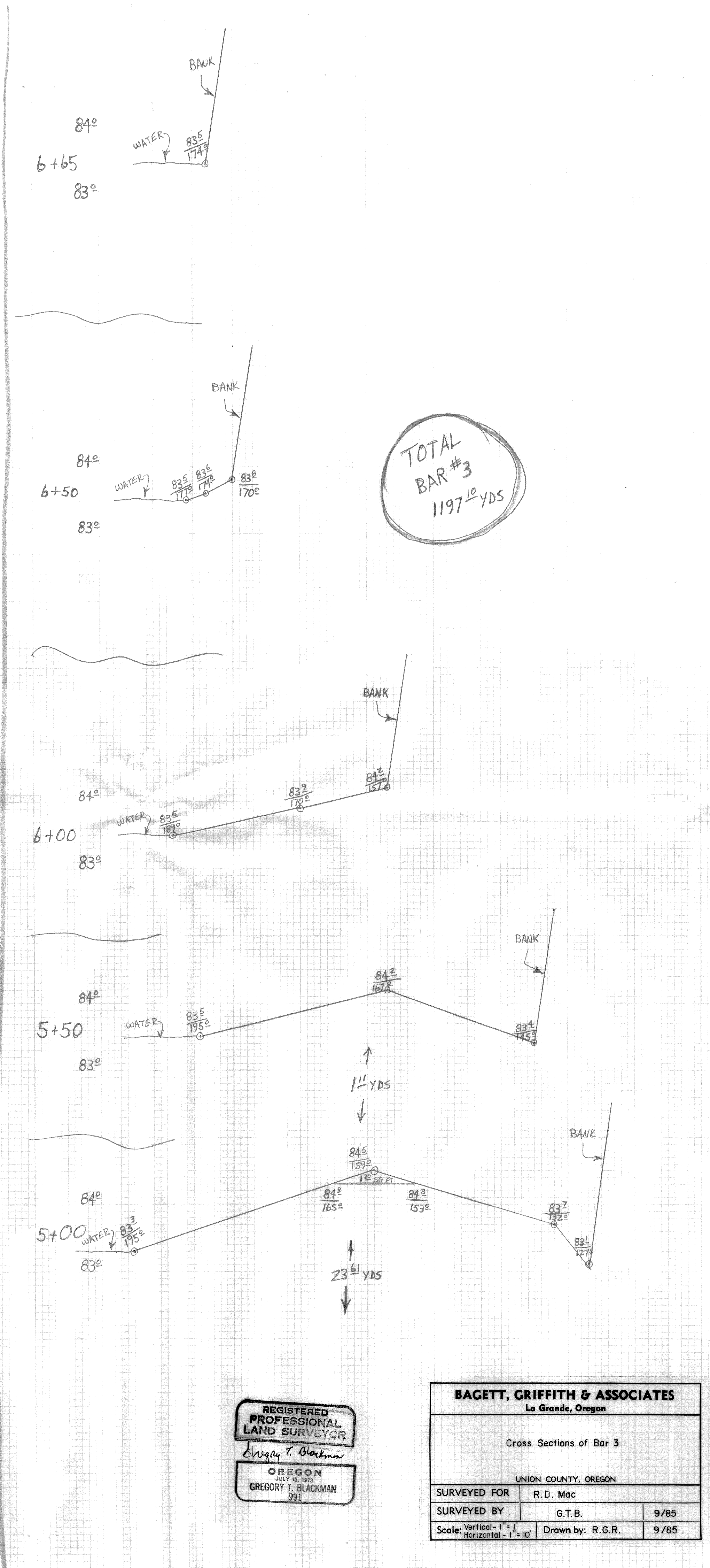
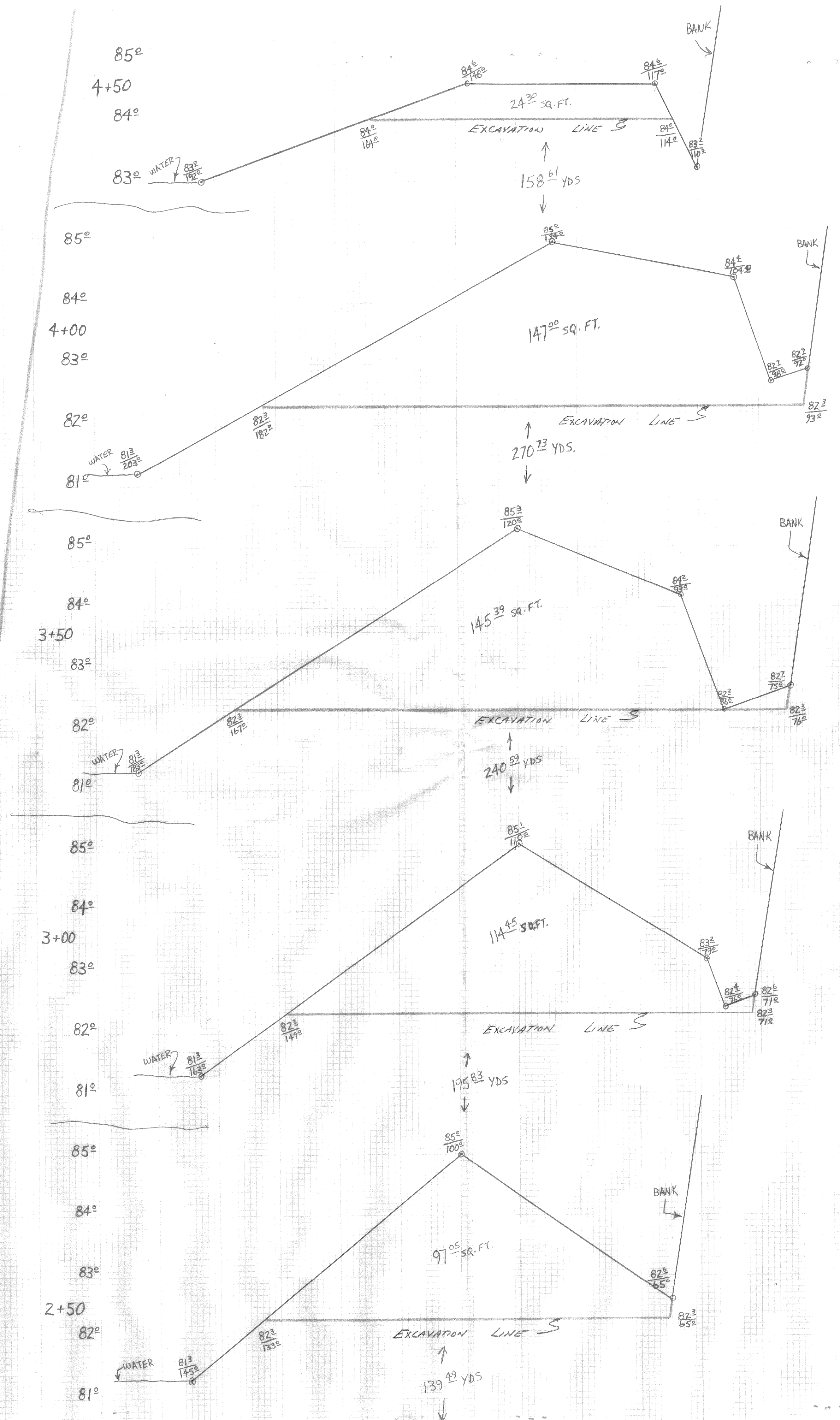
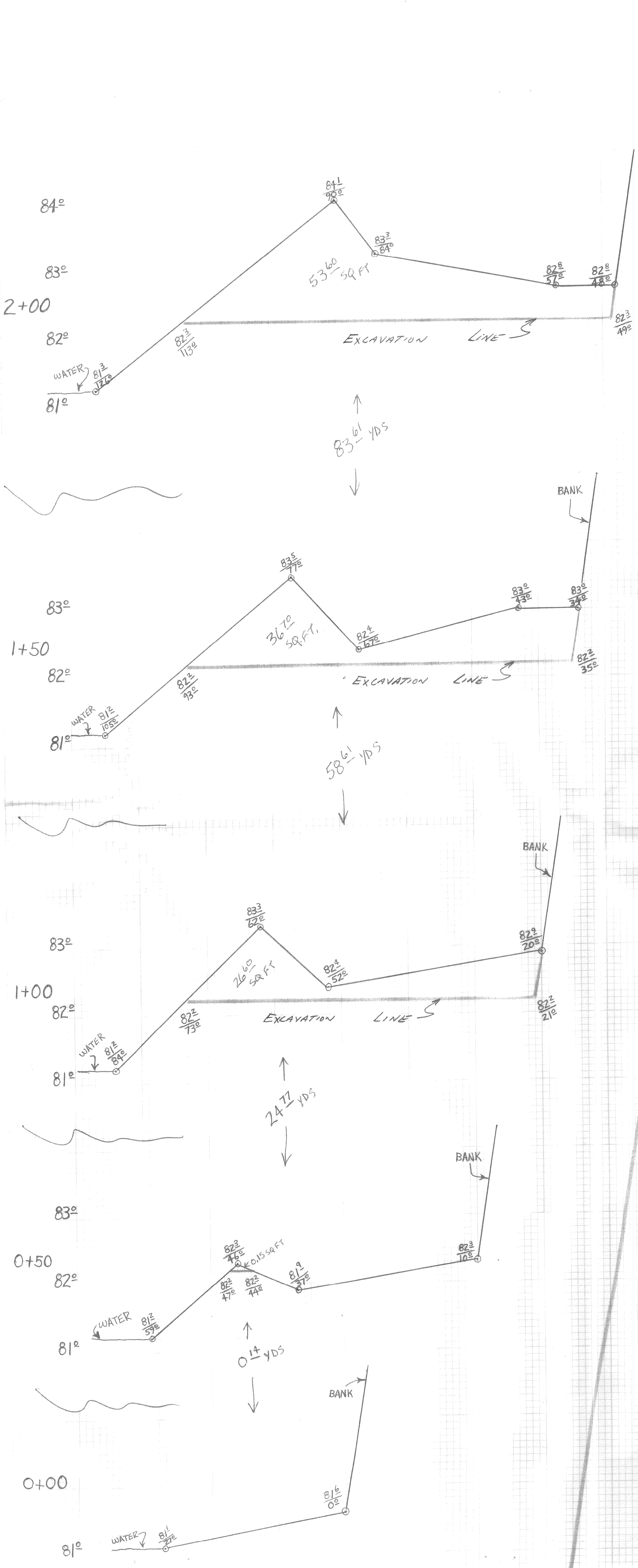




TOTAL
BAR #2
67.88 YDS

REGISTERED
PROFESSIONAL
LAND SURVEYOR
Gregory T. Blackman
OREGON
GREGORY T. BLACKMAN
93

BAGETT, GRIFFITH & ASSOCIATES La Grande, Oregon		
Cross Sections of Bar 2		
UNION COUNTY, OREGON		
SURVEYED FOR	R. D. Mac	
SURVEYED BY	G.T.B.	9/85
Scale	Vertical: 1"=1'	Horizontal: 1"=10'
Drawn by:	R.G.R.	9/85



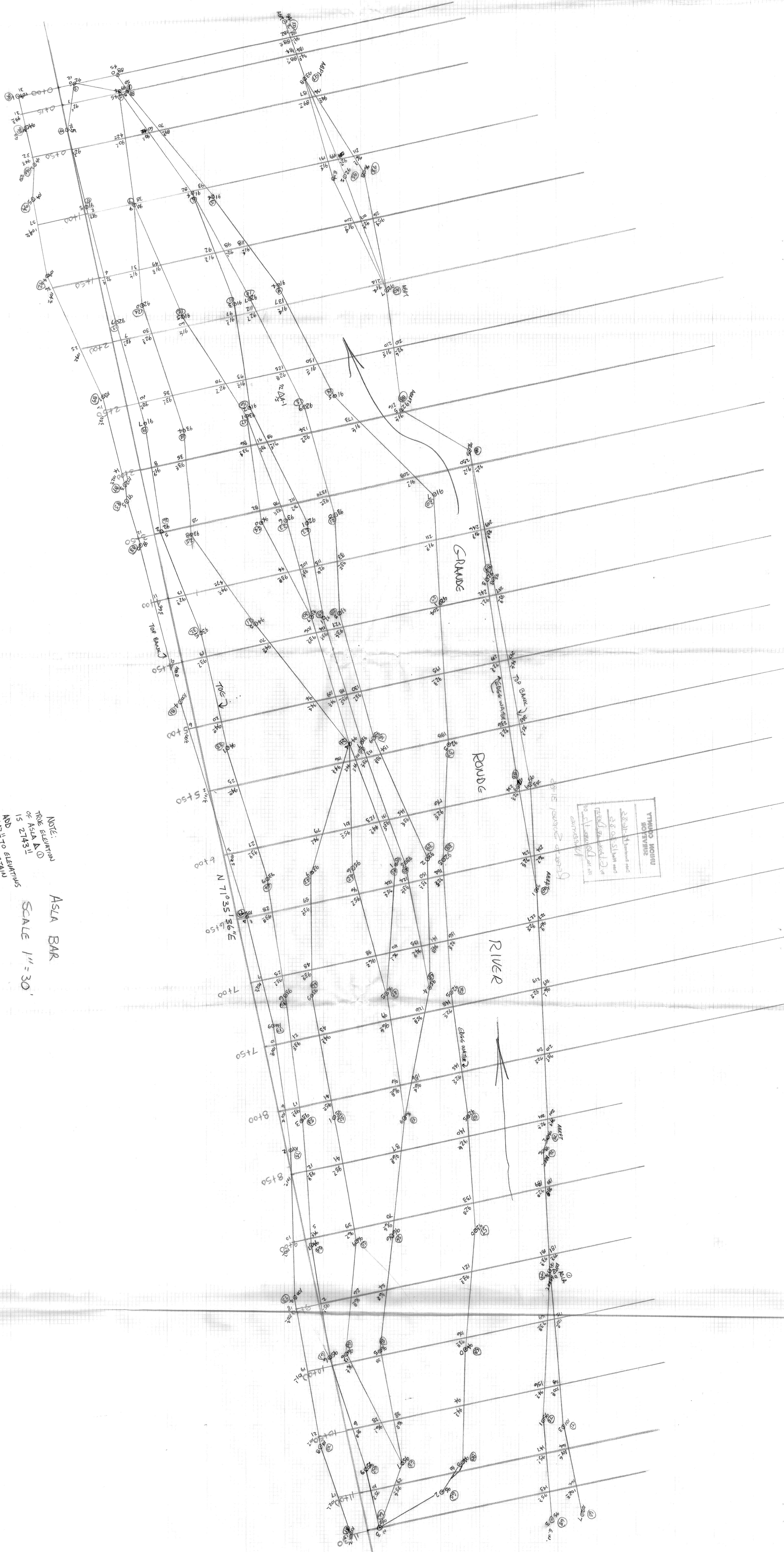
TOTAL BAR #3
1197.0 YDS

REGISTERED
 PROFESSIONAL
 LAND SURVEYOR
 Gregory T. Blackman
 OREGON
 2007-10-19-2025
 GREGORY T. BLACKMAN
 991

BACETT, GRIFFITH & ASSOCIATES La Grande, Oregon	
Cross Sections of Bar 3	
UNION COUNTY, OREGON	
SURVEYED FOR	R. D. Mac
SURVEYED BY	G.T.B. 9/85
Scale: Vertical - 1" = 1'	Horizontal - 1" = 10'
Drawn by:	R.G.R. 9/85

NOTE:
TRIDE ELEVATION
OF ASLA II
IS 2743.1
ADD 11 TO ELEVATIONS
2643.1 TO OBTAIN
SHOULDER TO ELEVATION
TRIDE ELEVATION
(U.S.C.S. DATUM)

ASLA BAR
SCALE 1" = 30'



STATE OF CALIFORNIA
DEPARTMENT OF HIGHWAYS
DIVISION OF HIGHWAY ENGINEERING
SAN FRANCISCO, CALIFORNIA