

Surveyed for O.M. Ramsey & A. Lunn Dec 26 1890
by J.W. Kimbrell Surveyor Plat No 117

I commenced at the corner to Sec 21-22-27 & 28 T6S R39E W1M
old Post and pits &c

- 943 UP R/R N 88° 8' W
- 1037 Set Post for fractional corner
- 1504 Well race N 10° 6' E 2.5 lks across
- 2665 Slough runs East
- 3875 Slough set Post for line



Hence run south on random line bet Sec 27 & 28 var 20° E

520 to up R/R Right-away course S 52° W N 52° E

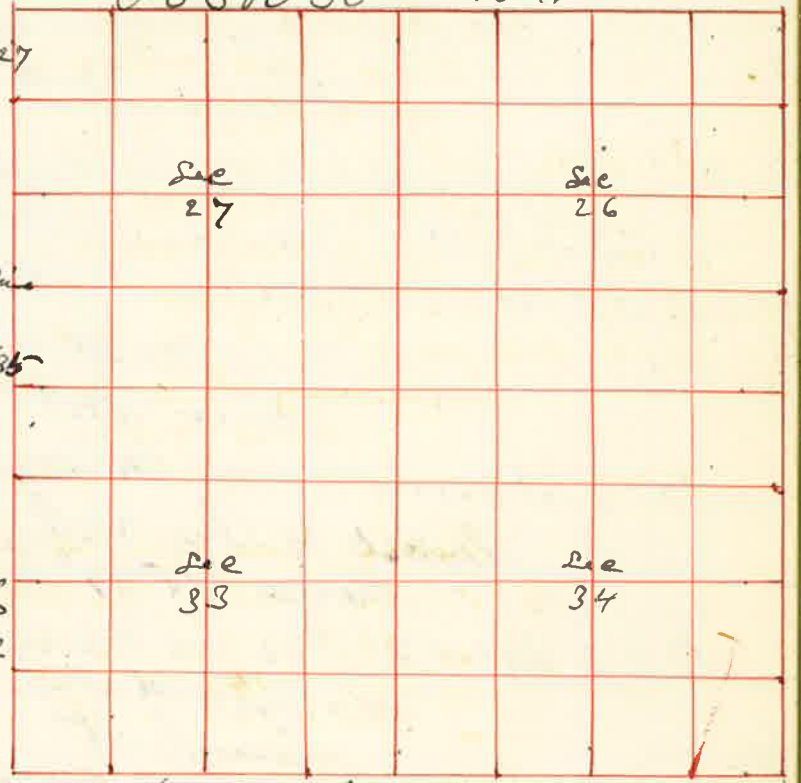
- Hence run commencing at a Point 505 lks south of the center of E 1/2 Sec 22
- Hence S 52° W 420 lks 11
- Hence N 32° W 143 " 12
- Hence S 52° W 4425 " 13
- Hence South 520 " 14
- Hence East 3832 " 15
- Hence North 625 " 16
- Hence East 625 " 17
- Hence North 2814 " to Place of Beginning

J.W. Kimbrell
Surveyor

Surveyed for W.L. Charles Lee Wickes & Jesse Bryant Dec 28 1890
by J.W. Kimbrell US Dept Surveyor Plat No 118

I commenced at the corner to Sec 26-27-34 & 35 T5S R38E W1M.

- Hence North bet Sec 26 & 27 var 20° E
- 2000 Set temporary 1/16 corner
- 3888 Intersect 28 lks West of the 1/4 Sec corner bet Sec 26 & 27
- Hence S 024' W on line
- 1944 Set Post for 1/16 corner
- 3888 The corner to Sec 26-27-34 & 35
- The 1/4 Sec corner bet Sec 26 & 27
- Hence North on random line bet Sec 26 & 27 var 20° E
- 2000 Set temporary 1/16 corner
- 4020 Intersect 156 lks East of the corner to Sec 22-23-26 & 27
- Hence run S 2° 14' E on true line
- 2010 Set Post for 1/16 corner
- 4020 The corner 1/4 Sec corner bet Sec 26 & 27
- I then commenced at the corner to Sec 22-23-26 & 27
- Hence West on random line bet Sec 22 & 23 var 20° E
- 2000 Set temporary 1/16 corner
- 4005 Intersect the 1/4 Sec corner bet Sec 22 & 27 East on line var same
- 2002 1/2 Set Post for 1/16 corner
- 4005 The corner to Sec 22-23-26 & 27
- I commenced at the 1/4 Sec corner bet Sec 22 & 27
- Hence run south on random line through center Sec 22 var 20° E
- 2000 Set temporary 1/16 corner
- 4000 Set temporary 1/16 corner
- 6000 Set temporary 1/16 corner
- 8054 Intersect 252 lks East of the 1/4 Sec corner bet Sec 27 & 33
- The course of this line would therefore N 1° 48' E or S 1° 48' W



I commenced at the $\frac{1}{4}$ sec corner bet sea 22 & 27
 thence I run west on blank line
 2000 set Post for $\frac{1}{16}$ corner
 thence South through center W $\frac{1}{2}$ sea 27
 var $20^{\circ} E$

2000 set Post for $\frac{1}{16}$ corner
 4000 set Post for $\frac{1}{16}$ corner
 6000 set Post for $\frac{1}{16}$ corner in center SW $\frac{1}{4}$ sea 27
 I commenced at the corner to sea 26-27-33 & 34
 thence West on random line bet sea 27 & 33
 var $18^{\circ} 30' E$

2000 set temporary $\frac{1}{16}$ corner
 3884 intersect 15 lks North of the $\frac{1}{4}$ sea corner bet sea 27 & 33
 thence $N 89^{\circ} 47' E$ on true line

1942 set Post for $\frac{1}{16}$ corner
 I commenced at the center Post corner sea 27
 thence East

2000 set temporary $\frac{1}{16}$ corner
 4000 intersect 55 lks South of the $\frac{1}{4}$ sea corner
 $S 89^{\circ} 12' W$ on true line

2000 set Post for $\frac{1}{16}$ corner in center E $\frac{1}{2}$ sea 27
 I commenced at the $\frac{1}{16}$ corner on E by sea 27
 thence East

1941 set Post center S W $\frac{1}{4}$ sea 26
 thence South

1944 to $\frac{1}{16}$ corner on S by S W $\frac{1}{4}$ sea 26
 I commenced at the corner to sea 26-27-34 & 35
 thence East bet sea 26 & 35 - var $20^{\circ} E$

2000 set temporary $\frac{1}{16}$ corner
 4000 could find no $\frac{1}{4}$ sea corner set temporary $\frac{1}{4}$ sea cor

7894 intersect 37 lks South of the corner to sea 25-26-35 & 36
 $S 89^{\circ} 45' W$ on true line

3947 set $\frac{1}{4}$ sea corner bet sea 26 & 35 -
 5920 set $\frac{1}{16}$ corner
 7894 the corner to sea 26-27-34 & 35 -
 thence South on random line bet sea 34 & 35 -

2000 set temporary $\frac{1}{16}$ corner
 4000 intersect 127 lks West of the $\frac{1}{4}$ sea corner bet sea 34 & 35 -
 $N 10^{\circ} 49' W$ on true line bet sea 34 & 35 - J.W. Tombrill U.S. Dept. Survey

Surveyed for H. St. French & W. L. Rice Dec 31st 1890
 by J. W. Tombrill U.S. Dept. Survey Plot No 119

J 38 B 40 E

I commenced at the corner to sea 16-17-20 & 21									
thence I run on random line bet sea 17 & 20									
var $21^{\circ} 30' E$									
2006 set temporary $\frac{1}{16}$ corner									
4010 found no $\frac{1}{4}$ sea corner set temporary $\frac{1}{4}$ sea cor	See							See	
6015 set temporary $\frac{1}{16}$ corner	18							17	
8020 found no $\frac{1}{4}$ sea corner set temporary corner to sea 17-18-19 & 20									
thence I extend my line west bet sea 18 & 19									
2000 set temporary $\frac{1}{16}$ corner									
4755 through 375 lks across	See							See	
5640 through 275 " "	19							20	
8080 U.S. Field Notes in corner but at 87 lks further west I intersect west boundary 84 lks									

South of the corner to sea 18-19-23 & 24 see (side marking)
 I therefore have a falling of 18 lks West to each 20 lks
 and 21 lks to each $\frac{1}{2}$ mile
 thence I run $S 89^{\circ} 24' E$ bet sea 18 & 19
 var $20^{\circ} 10' E$

6118 set Post marked $\frac{1}{16}$ on N face for $\frac{1}{16}$ corner from which
 a willow 4 ins dia lies South 4 lks distant marked $\frac{1}{16}$ S. J. facing corner

8124 set Stone for corner to sea 17-18-19 & 20 in center of road 80
 thence East bet sea 17 & 20

20182 set Stone for $\frac{1}{16}$ corner
 4031 set Stone for $\frac{1}{4}$ sea corner bet sea 17 & 20
 60412 set Stone for $\frac{1}{16}$ corner
 8052 the corner to sea 16-17-20 & 21
 thence I run South on random line bet sea 20 & 21
 var $21^{\circ} E$

2000 set temporary $\frac{1}{16}$ corner
 4000 found no $\frac{1}{4}$ sea corner set temporary cor.
 6000 set temporary $\frac{1}{16}$ corner
 8000 could find no corner set temporary cor to sea 20-21-28 & 29
 thence South bet sea 28 & 29

4050 intersect 147 lks West of the $\frac{1}{4}$ sea corner bet sea 28 & 29