

By J.W. Kimbrell County Surveyor Plat No. 83.

I commenced at the corner to Sec 1=12=6 & 7 on Range line between Ranges 38 & 39 in T1S, for the re establishment of the 1/4 Sec corner bet Sec 1, 6, 6.

Hence North on Range line var 20° 15' E

4000 Set Temporary Stake for 1/4 Sec corner

7942 the corner to Sec 1 & 6 T1S R 38 & 39 East making an excess of 42 lbs over the field notes of A.S. Survey

I therefore run South on line and at 3921 Set Stone in center of County Road 8 x 12 = 31 inches

for 1/4 Sec corner bet Sec 1 & 6 7942 the corner to Sec. 1=12=6 & 7 T1S Ranges 38 & 39 E

J.W. Kimbrell County Surveyor



By J.W. Kimbrell County Surveyor Plat No 84

I commenced at the corner to Sec 18=19=24 T3S R 38 & 39 East

W is the old Post mound pits & c.

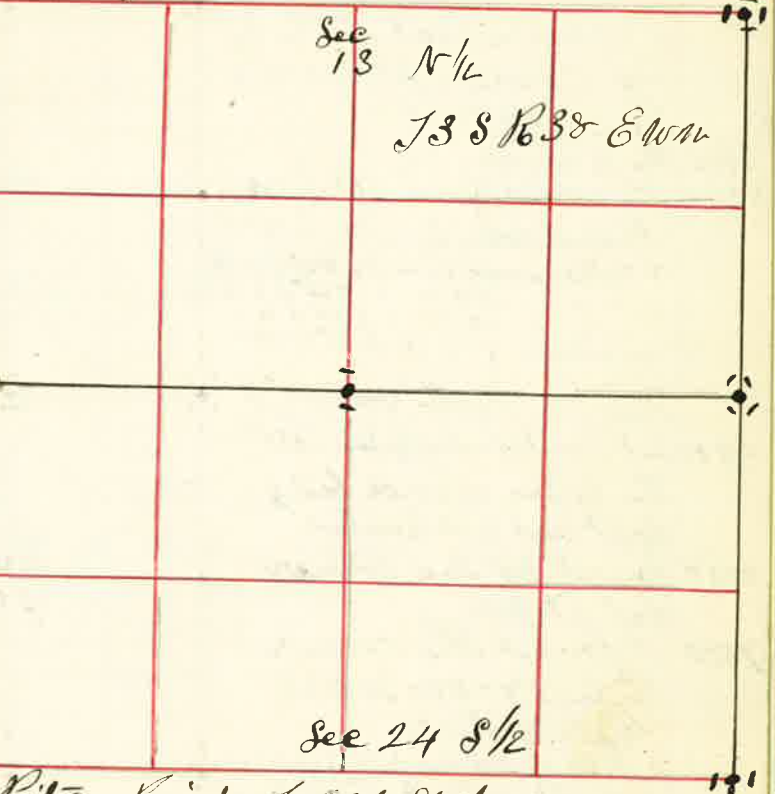
Hence North var 20° E

4010 the 1/4 Sec corner a Stone supposed to be placed there by some Co Surveyor

I then started again at the corner to Sec 13=24=18 & 19

and run South var 20° E

4021 the 1/4 Sec corner bet Sec 19 & 24. Old mound of Pits Point of Old State



J.W. Kimbrell County Surveyor

By J.W. Kimbrell County Surveyor Plat No. 85

I commenced at the 1/4 Sec corner on North Boundary Sec 32 bet Sec 29 & 32

a Stone marked 1/4 S.

Hence East bet Sec 29 & 32 var 20° E

3525 the corner to Sec 28=29=32 & 33 a Stone marked with 1 notch on South side and 4 notches on the East Edges.

J.W. Kimbrell County Surveyor

