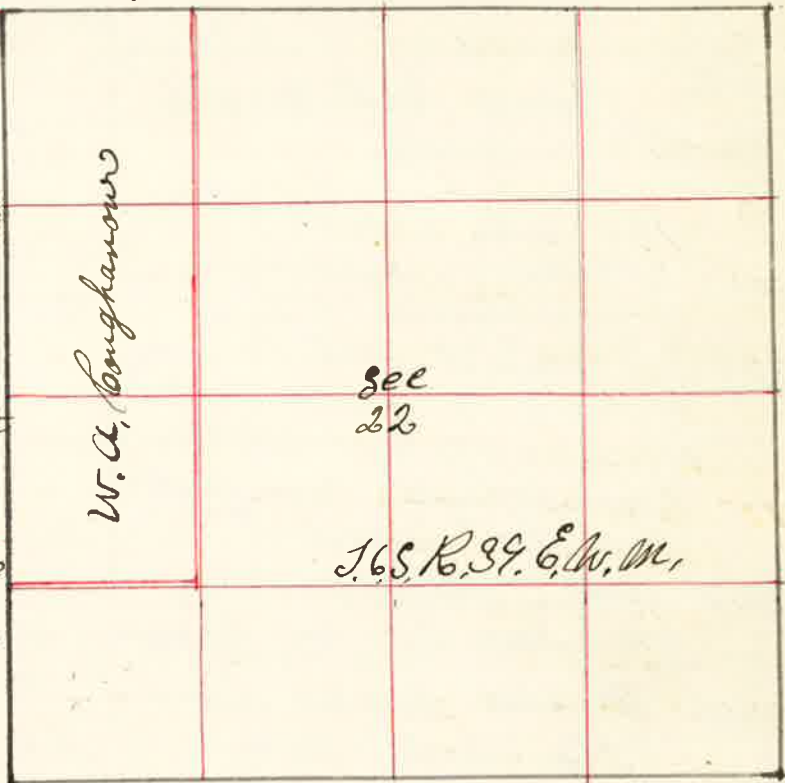


Surveyed for W.A. Coughanour March 8 1889  
By J.W. Kimbrell County Surveyor Plat No 69

I commenced at the  
1/4 Sec corner on North  
Side Sec 22 in T6S R39 E  
thence I run west var 20°  
2000 Chain set Stake for  
1/8 corner  
3991 the corner to Sec 15-16  
21 1/2 24 25 lks South  
of corner  
from which I run  
S 89° 30' E on line line  
1995 Set Post for 1/8 corner  
2656 the County S E & N W  
3991 the 1/4 sec corner between  
Sec 15 & 22



the corners to Sec 22 = 23 = 26 & 27 thence west var 18° 30' E  
2000 Road N & S  
4000 ditch N & S  
4400 Willow brush offset 203 links South thence west  
122 links across North powder River  
5200 Set back North on line  
6000 Set Stake for temporary 1/8 corner  
7926 the corner to Sec 21 = 22 = 27 & 28 92 lks North of corner  
from which I run East var 19° E  
1981 1/2 Set Post for 1/8 corner  
thence North var 20° E  
2000 Set Stake for 1/16 corner in center S.W. 1/4 Sec 22  
the corner to Sec 21 = 22 = 27 & 28 thence North var 20° E  
2000 Set Stake for 1/8 corner  
4000 the 1/4 sec corner between Sec 21 & 22 17 lks East from  
from which I run South  
2004 Set Stake for 1/8 corner on west side of W 1/4 Sec 22  
J.W. Kimbrell County Surveyor

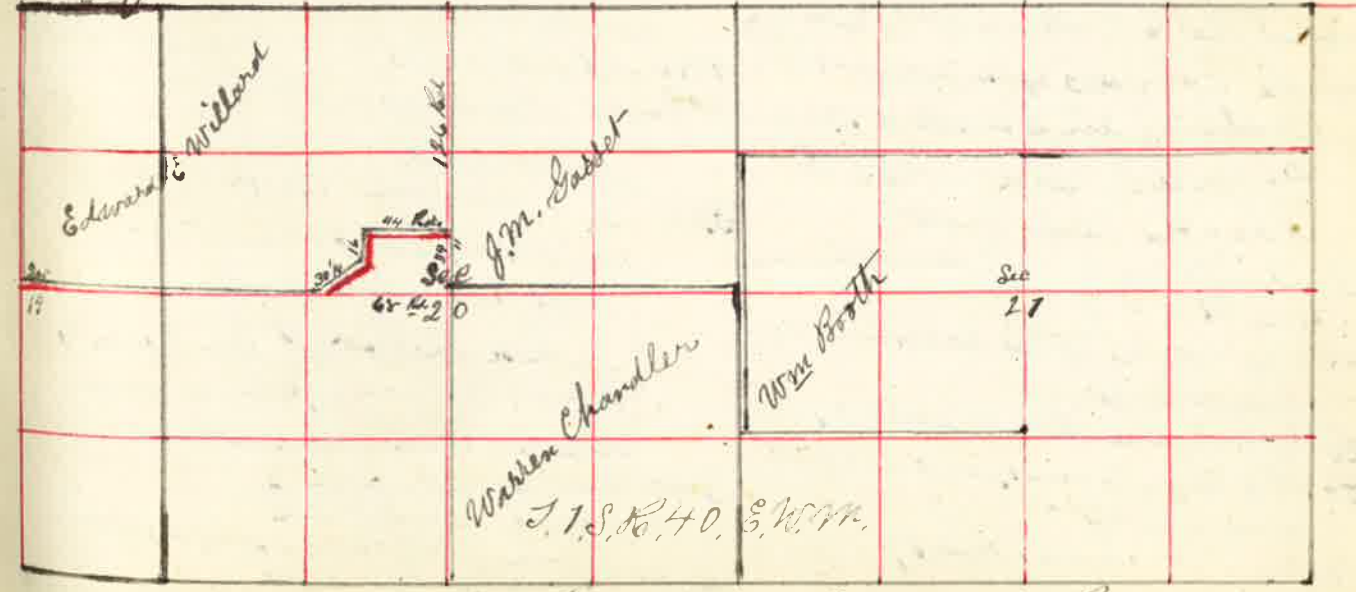
Surveyed for B.W. Grandy March 19<sup>th</sup> 1889  
by J.W. Kimbrell County Surveyor Plat No. 70

for the establishment of  
the corner to Sec. 5  
5 = 6 = 7 & 8  
I started at the  
corner to Sec 7 = 8 = 17 & 18  
thence North var 20° E  
8000 Set Stake for temporary  
corner  
thence North var 21° E  
4005 the 1/4 sec corner  
between Sec 5 & 6  
from which I run  
South 1° E  
4005 Set Stone 8 x 12 x 20  
for corner to Sec.  
5 = 6 = 7 & 8



J.W. Kimbrell County Surveyor

Surveyed for Wm Booth J.M. Sussett Warren Chandler & E.E. Willard March 20 1889  
by J.W. Kimbrell Co. Surveyor Plat No. 71



for field notes see next page