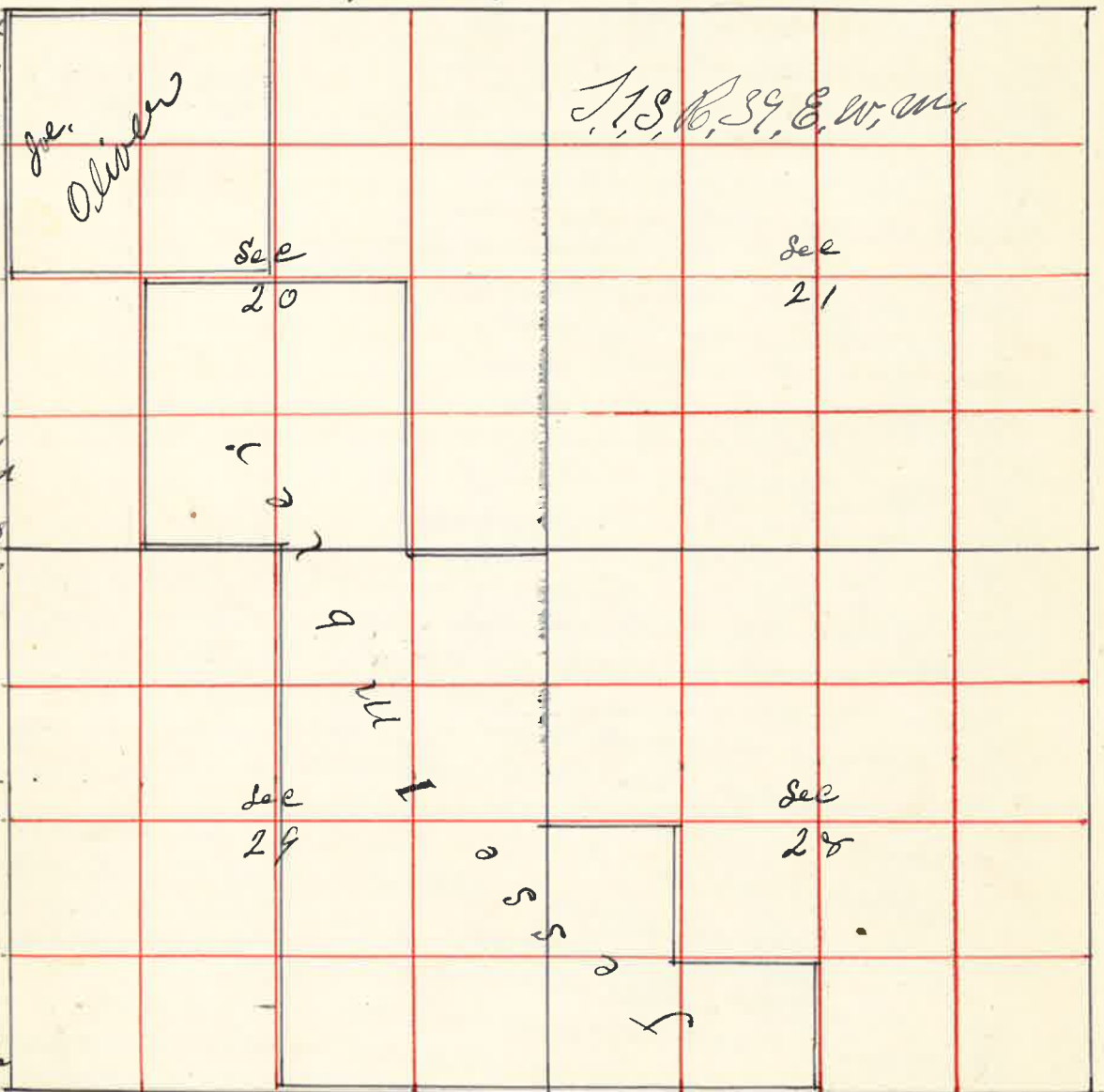


70 Surveyed for Jesse Imblos Dec 17 1888
 By J.W. Kimbell County Surveyor Plat No 62

I commenced
 at the corner
 to Sec 26 =
 = 27 = 34 & 35
 thence west
 var 190° 6'
 7974
 chains
 the corner
 to Sec
 27-28=33
 9834
 thence west
 3904 chain
 Grand Round
 River 184
 links across
 4000 chains
 set stake
 for survey
 1/4 sec corner
 8070 set
 stake for
 temporary
 corner to
 Sec 32=33
 28829
 thence
 west
 4005
 chains
 set stake
 for temporary 1/4 sec corner 8155 chains the corner to Sec



29-30=31 & 32 from which I run East var 10° 6' 4042
 chains set stake 6x8x16 ft 1/4 sec corner between Sec 28 & 32 8084 chains set
 stone 10x12x18 ft corner to Sec 28=29=32 & 33 thence East
 4037 chains set stone 6x9x18 ft 1/4 sec corner between Sec 33 & 28 the corner to Sec 4=5=32 & 33 thence
 North 80 chains set stake. thence North 180 chains the corner
 Grand Round River 163 links across 40 chains set stake
 for temporary 1/4 sec corner 5962 chains Grand Round
 River 185 links across 6870 chains Grand Round
 River 185 links across 8036 chains the corner to
 Sec 20=21=28 & 29 thence South 4009 chains set stake for
 1/4 sec corner between Sec 28 & 29 thence East 2008

See Page 70 Plat 62 Jesse Imblos
 thence South 2000 chains thence East 2016 chains thence
 South 2000 The corner to Sec 20=21=28 & 29
 thence North var 20° 6' 692 chains Grand Round River
 321 links a cross 40 chains set stake for survey
 1/4 sec corner 80 chains found no corner thence North
 40 chains found no corner 80 chains found no corner
 thence North 40 chains found no corner
 8170 chains the corner to Sec 4=5=32 & 33 from which
 I run South allowing an excess of 8056
 chains excess in each mile one U.S. Field Note
 and at the corner to Sec 16=17=20 & 21
 set stone for corner thence South 4928 chains
 set post in mound of earth for 1/4 sec corner
 between Sec 20 & 21 the corner to
 Sec 5=6=7 & 8 thence South 1898 chains
 Willow Creek 20 ft wide 4070 chains rail
 fence 8115 rail fence thence South 40 chains
 rail fence 8025 set stake thence South 8152 chains
 the corner to Sec 19=20=30 & 29 from which
 I run North 4025 chains set stake for 1/4 sec
 corner 8051 chain set stake for corner to Sec 18=19
 20 & 19 the corner to Sec 19=20=29 & 30
 thence East 20 chains set stake for 1/4 corner
 40 chains set stake for 1/4 sec corner 60 chains
 set stake for 1/4 corner 7100 chains Grand Round
 River 8038 chains the corner to Sec 20=21=28 & 29
 from which I run West 2009 chains set stake
 for 1/4 corner 4018 chains set stake for 1/4 sec corner
 6027 chains set stake for 1/4 corner 8038
 chains Sec corner the N.W. corner Sec 19 thence
 East 7920 chains set temporary stake thence East 7970
 set temporary stake thence East 7914 chains set stake
 thence East 1100 chains Grand Round River 250 links
 across 4225 chains the 1/4 sec corner between Sec 22 & 15
 making an excess of 225 links in the 3 1/2 miles of
 U.S. Field Notes. I therefore run West allowing
 32 links excess to each 1/2 mile to the corner
 to Sec 16=17=21 & 22 thence West 4017 chains set
 stake for 1/4 sec corner 8034 the corner to Sec 17=18=19 & 20
 Over

The 1/4 Sec Corner on West Side Sec 20 thence East 74 10 1/2
8020 chains the 1/4 Sec cor on East Side Sec 20 from
which I run West 2005 chains set Stone for 1/2 cor.
4011 chains set Stone marked C.S. for center Sec 20 6017
chains set Stone for 1/2 corner for center West Side 20
the 1/4 Sec corner on North Side Sec 20 thence South
4022 chains the center 8045 chains the 1/4 Sec cor
on South Side Sec 2 W. Kimbrell County Surveyor

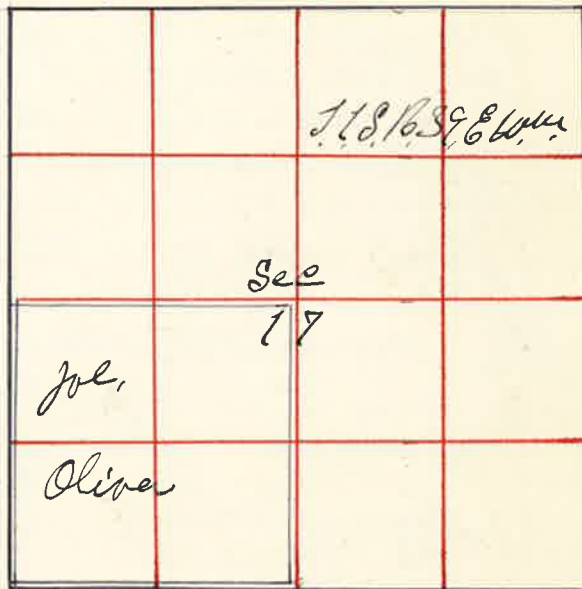
Surveyed for J. Olliver Dec 23rd 1888

By W. Kimbrell County Surveyor Plat No. 63

I commenced at the N.W. corner
of Sec 18 thence East - var 20° 8' 48" 57
chains Willow-creek 7852 chains
set stake for temporary Sec cor
thence East 40 chains set stake
for temporary 1/4 Sec cor 8000
thence East 7914 chains no
corner but at 8044 chains found
the Old Original Cor to Sec
9=10=15 & 16 stake decayed
I placed a Stone 6x10x18 in
12 inches in the ground.

I therefore have an excess of
270 links in the 3 miles over the U.S. Field Notes
I run West allowing 90 links excess to each mile
and I located a Point for 1/4 Sec cor on N Side Sec 17
and run South for the Establishment of the center Sec
17 at 4015 center 8037 1/4 Sec cor on South Side Sec 17
the S.E. corner Sec 17 thence North 4011 chains 1/4 Sec cor
thence West 4032 chains the center 8065 chains West
boundary the S West cor Sec 17 thence North 4026
chains the 1/4 Sec cor on West Side Sec 17 set Stone for
1/4 Sec cor from which I run East 4033 chains set
Stone mark C.S. for center Sec 17

W. Kimbrell County Surveyor



Surveyed for H H Elmer Dec 24 1888

By W. Kimbrell County Surveyor Plat No. 64

I commenced at the 1/4 Sec cor
on the South Side Sec 19 thence
East 4045 chains the S.E. cor
Sec 19 from which I run
West 2022 1/2 chains set Stone
marked for 1/2 cor 4045 chains
the 1/4 Sec cor thence
West 7998 chains the S.W.
corner Sec 19 from which
I run East 1959 chains set
Stone marked for 1/2 corner on
South Side Sec 19

The S.W. corner Sec 19 thence
North 40 chains set stake for temporary 1/4 Sec cor 80
chains set stake for Sec cor thence North
4042 chains the 1/4 Sec cor on West Side Sec 18
making an excess of 48 links in 1 1/2 miles or 2 1/4
links to each 1/2 mile. I therefore run South 4014
chains set Stone marked for Sec cor to Sec 18=19=138 1/4
thence South 4014 chains set stake for 1/4 Sec cor.
thence East 1920 chains set stake for 1/2 cor
3920 set stake for temporary center 5920 chains set
stake for temporary 1/2 cor 8020 chains 1/4 Sec cor East
Side Sec 19 from which I run West 2025 chains set Stone
for 1/2 corner in center of East 1/2 Sec 19 4050 chains
set Stone for center Sec 19 6075 chains set Stone marked
for 1/2 cor in center West Side Sec 19 the N.W. corner
Sec 19 thence East 3920 chains set stake for temporary 1/4
Sec cor 4074 chains to N.E. cor Sec 19 from which
I run West 4077 chains for natural 1/4 Sec thence South
through center of 022 1/2 center 8045 the 1/4 Sec cor
on South Side Sec 19

W. Kimbrell County Surveyor

