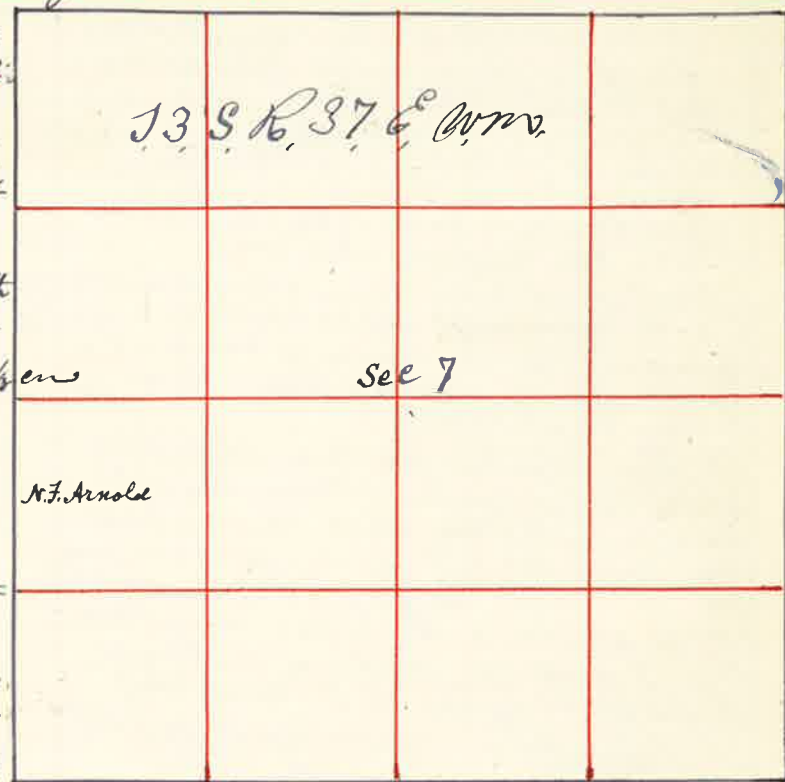


60 Surveyed for N. F. Arnold Dec 3rd 1888

By J. W. Kimbrell County Surveyor Plat No. 55

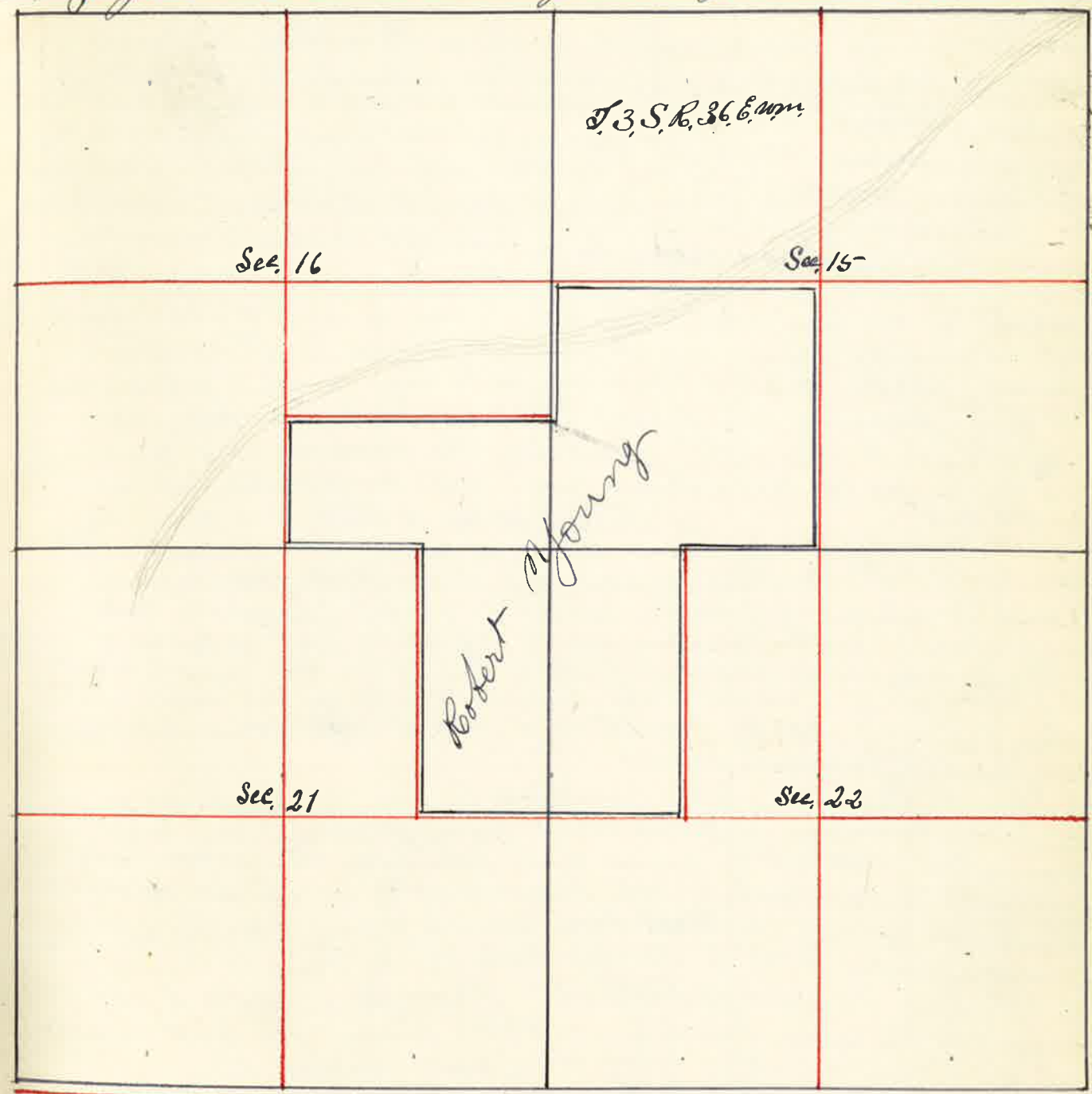
I commenced at the corner to Sec 7-18 = 12 & 13 thence North 4090 chains the 1/4 Sec corner from which a Pine Bear East 8 links distant a " " " " West 8 links distant from which I run South 2042 chains and set Post in mound of rock from which a Pine 6 inches Bears N 10° 30' E 30 links distant a Pine 20 inches Bears S 78° E 34 links distant the corner to Sec 7-8 = 12 & 13 thence East 4084 chains from which I run West 2030 chains and set Post for 1/8 corner from which a Pine 7 inches Bears S 7° E 22 links distant a Pine 20 inches Bears N 7° 45' E 21 links distant thence North 2042 chains set Post in mound of Stone for 1/4 corner thence West 2070 chains to the 1/8 corner



J. W. Kimbrell County Surveyor

Surveyed for Robert Young Dec. the 4 1888

By J. W. Kimbrell County Surveyor Plat No. 56



I commenced at the corner to Sec 15 = 16 = 21 & 22, from which a Pine 16 inches diameter Bears N 14° 30' W. 72 links distant a Pine 24 " " " " N 32° 30' E 63 " " a Pine 20 " " " " S 55° 30' E 95 links distant a Pine 30 inches dia. Bears S 60° 30' E 58 links distant thence North varo 20° 30' E 2000 chains set Stake for temporary 1/8 corner 4000 chains set Stake for temporary 1/4 Sec corner 8205 chains the corner to Sec 9 = 10 = 15 and 16 from which a Pine 14 in Bears N 61° E 27 links a Pine 12 in Bears N 28° W 33 links a Pine 20 in Bears S 19° W 70 links, a Pine 20 in Bears S 6° 15' E 76 links over

from which I run South $12\frac{1}{2}^{\circ}$ 4102 Chains planted Red volcanic rock $7 \times 7 \times 20$ inches for $\frac{1}{4}$ Sec corner between Sec 15 & 16 at 6153 Chains Set Post marked for $\frac{1}{8}$ corner from which a Pine 12 inches bears $N 55^{\circ} W$ 1201 links distant a Fir 12 inches bears $S 1^{\circ} E$ 95 lks dist. I then started at $\frac{1}{4}$ Sec corner between Sec 15 & 16 thence East through center Sec 15 40 chains set post for temporary center 80 chains found no $\frac{1}{4}$ Sec corner and proceeded to re establish the initial point of the same I therefore started at the South East corner Sec 15 from which a pine 24 inches diameter bears $S 7^{\circ} 30' E$ 320 links distant thence I run Belt bar $20^{\circ} E$ 40 chains set stake for $\frac{1}{4}$ Sec corner 80 chains found no corner 81 chains found bound line 75 lks on corner thence North 4306 chains the $\frac{1}{4}$ Sec corner between Sec 10 & 11 making the excess 103 links to each $\frac{1}{2}$ mile over the U.S. & Texas line making the random line run through the center Sec 15 8134 chains long and my departure 34 links South or $11''$ I then started at the $\frac{1}{4}$ Sec corner on the North side Sec 15 from which a pine 24 inches bears $S 63^{\circ} E$ 205 links dist - a pine 14 inch dia bears North 155 links dist thence I run South bar $20^{\circ} E$ 4083 chains the center 8185 chains South boundary Sec 15 93 links west of $\frac{1}{4}$ Sec corner on South side Sec 15 from which a pine 18 in dia bears $N 10^{\circ} W$ 97 links dist - a pine 24 inch bears $S 7^{\circ} W$ 99 links dist from which I run North bar $20^{\circ} 45' E$ and at 4092 chains set stake marked C.S. for center Sec 15 I then started at the S.W. corner Sec 15 thence East 4050 chains the $\frac{1}{4}$ Sec corner on South side Sec 15 from which I run West 2025 chains set post for $\frac{1}{8}$ corner from which a pine 12 inch bears $S 51^{\circ} W$ 162 links a sawrack 8 inch bears $N 47^{\circ} E$ 86 links distant the $\frac{1}{4}$ Sec corner on West side Sec 22 from which a pine 14 inch bears $N 83^{\circ} E$ 35 lks distant a Fir 12 in bears $S 13^{\circ} 30' W$ 76 links distant thence I run East through the center Sec 22 8083 chains the East boundary Sec 22 77 links South of $\frac{1}{4}$ Sec corner from which a pine 22 inch bears $N 74^{\circ} E$ 141 links dist - a pine 30 in bears $N 65^{\circ} 30' W$ 370 links distant from which I run West on true line 6062 chains set post for $\frac{1}{8}$ corner from which a pine 14 inches bears $N 13^{\circ} E$ 68 links dist - a sawrack 8 inch bears $S 7^{\circ} 30' E$ 72 lks dist. The corner to Sec. 15 = 16 = 21822 thence West 2026 chains set post for $\frac{1}{8}$ corner from which a pine 7 inch bears $N 85^{\circ} 30' W$ 109 links a pine 7 inch bears $S 69^{\circ} 45' E$ 125 links distant 4052 chains the $\frac{1}{4}$ Sec corner on South side Sec 16 from which a pine 24 inch bears $S 78^{\circ} E$ 25 lks a pine 20 inch bears $N 31^{\circ} E$ 53 lks dist - bar $25^{\circ} E$ thence North bar $25^{\circ} E$ 8229 chains $\frac{1}{4}$ Sec corner on North side Sec 16 from which

a pine 24 inch bears $N 5^{\circ} W$ 55 links distant a pine 20 " " $S 39^{\circ} E$ 66 " from which I run South on true line bar $20^{\circ} E$ and at 6171 chains set post for $\frac{1}{8}$ corner from which a pine 6 inches bears $S 23^{\circ} 30' W$ 26 links distant W. Kimbell County Surveyor.

Surveyed for Robert Young, Sons and Wm. Simon Isaac Williamson S. H. Ferguson Mrs. Endrop & H. Jensen By W. Kimbell Co. Surveyors Plat No. 57 Dec the 7th 1888

