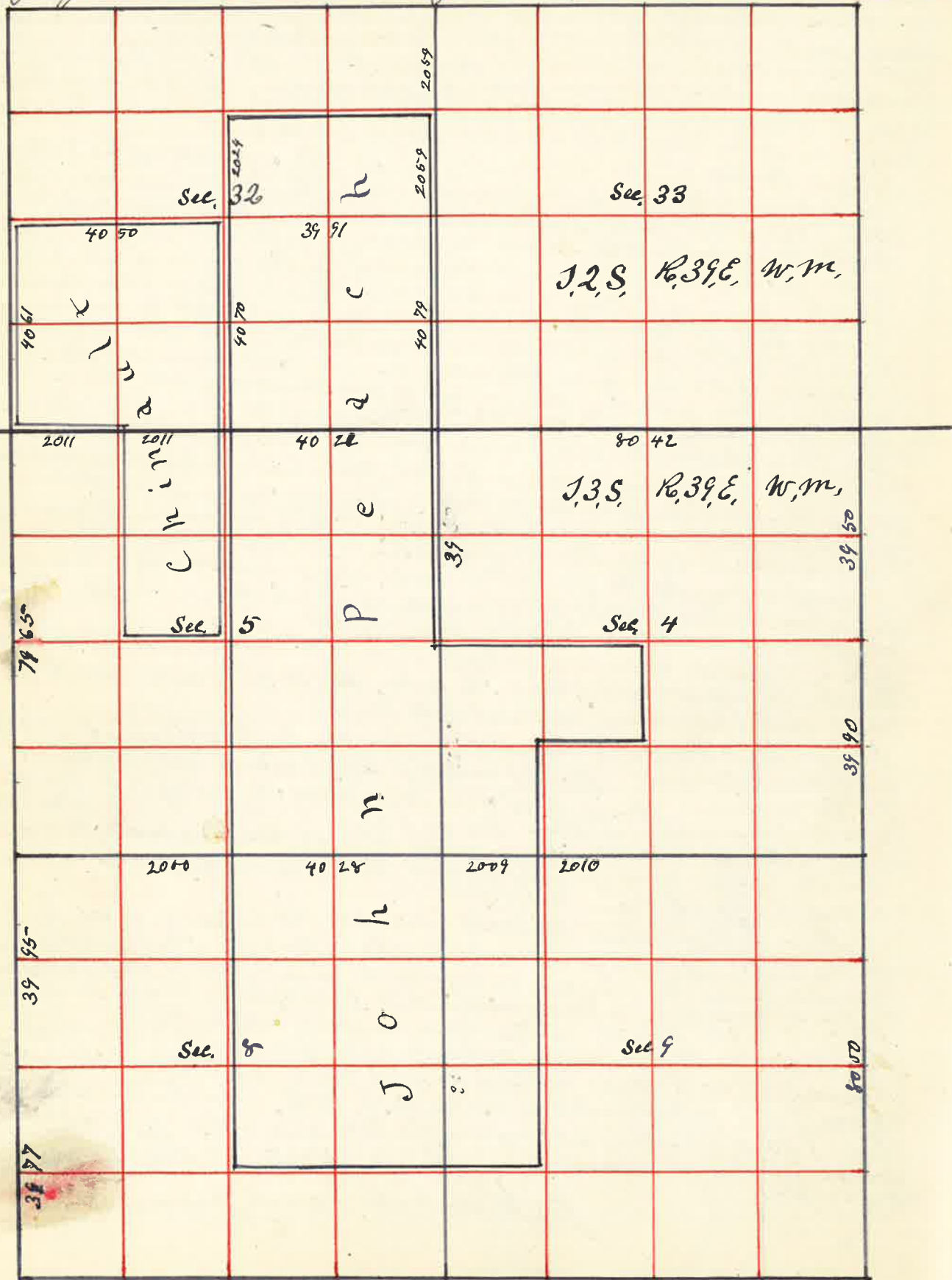


52 Surveyed for John Peack Oct. the 1st 1888
 By J. W. Kimbrell County Surveyor Plat No. 50



See Plat on Page 52 John Peack 53

I Commenced at The Corner to Sec. 5 = 6 = 31st 32nd Thence East on Township line var 20° E. 4.00 Chains offset 100 Chain North Thence East on Offset at 1700 Set back South 100 Chains on Line line 2000 Chains Set Stake for Temporary $\frac{1}{4}$ Sec corner around Bound River 127 links across 2550 Chains River Offset South 175 Chains Thence East on Offset 3550 Chains Set back 175 Chans North on line line. Thence East 3500 chains Slough 75 links across 4000 Chains Set Stake for Temporary $\frac{1}{4}$ Sec corner. 42nd Chain Slough 75 links across 8000 Chains No Sec corner Set Stake for Temporary corner Thence East 1300 Chains River Offset 300 South. Thence East on Offset at 4000 Set 300 chains North on line line and Set Stake for Temporary $\frac{1}{4}$ Sec corner Thence East - 7060 Chains Grand Bound River 158 links across 8084 Chains The Corner to Sec 3 = 4 = 33rd 34th. A Post from which a willow 4 inches Bears N.E. 10 lks distant a willow 9 inches Bears S.W. 10 links distant making an excess of 84 links over U.S. field Notes I therefore ran West and at 4021 Chains Set Post for $\frac{1}{4}$ Sec corner between Sec 4 & 33 8042 Chains Set Stone 10x12x20 for corner to Sec 4 = 5 = 32nd 33rd Thence West 4021 Chains Set Stone 6x8x20 inches marked $\frac{1}{4}$ for $\frac{1}{4}$ Sec corner between Sec 5 & 32 from which a willow 4 inches dia. Bears N 74° W 56 links distant - 6033 chains Set Stone on West Bank of Slough 6x11x18 for corner 8042 Chins the Corner to Sec 5 = 6 = 31st 32nd I Planted a Stone 5x10x19 inches The Corner to Sec 5 - 6 - 31 - 32 Thence South 1000 Slough 75 lks across 3960 Chains John Cars Garden fence on South Side of County Road 3975 Chains Set Random Stake for $\frac{1}{4}$ Sec corner 7975 Chains find no corner Set Stake for Temporary corner Thence South 3985 Chains the $\frac{1}{4}$ Sec corner between Sec 7 & 8 making a deficiency of 15 links as in U.S. Survey, Thence South 3977 Chains the Corner to Sec 7 - 8 - 17th 18th I retraced the line between Sec. 6 & 7 and find it to be 7820 chains making an excess of 20 links over U.S. Field Notes I then started at initial corner to Sec 5 - 6 - 7 & 8 Thence East at 20 chains Set Stake for Temporary $\frac{1}{4}$ Sec corner 4000 Chains. I found the Old $\frac{1}{4}$ Sec corner by digging in Old mound and located Post. I therefore Planted a Stone 6x8x23 inches marked $\frac{1}{4}$ for $\frac{1}{4}$ Sec corner between Sec 5 and 8 Thence West 20 chains Set Stone 6x7x13 for $\frac{1}{4}$ Sec corner. The $\frac{1}{4}$ Sec corner between Sec 5 & 8 Thence East 4010 Chains Set Post for Temporary Sec corner Thence East 4035 Chins found old Original $\frac{1}{4}$ Sec corner between Sec 4 and 9. dug in old mound and found old Point of Stake deposited old Post of Stake and drove a New Stake 3 inches Diameter and 2 feet long in Old mound level with top of mound, 4000 further on East Set Stake for Temporary Sec corner. Thence East 4031 Chains Rail fence 4665 Chains Grade Bound River 119 links across 7945 Chains the corner to Section 2 - 3 - 10th 11th Thence South 1511 Chains Grade Bound River 140 links across 4018 Chains the $\frac{1}{4}$ Sec corner to Sec 10 & 11 I started at The Corner to Sec 3 - 4 - 33rd 34th Thence South 105 Chains Grand Bound River 177 links across 3966 Chains Set Random Stake for $\frac{1}{4}$ Sec corner between Sec 3 & 4 7966 Chains Set Random Stake for Sec corner to Sec. 3 - 4 - 9th 10th Thence South but found no corners on this line for 4 miles further South to corner to Sec 27 = 28 = 33 and 34 Corresponding with Field notes of U.S. Survey Thence West 80 Chains to corner to Sec 32 - 33 - 28 and 29 Thence North var 20° E. Over

8050 chains Rail fence on South Side County Road Thence North 8000 found no come. Thence North 8000 set stake for temporary corner to Sec 8 = 9 = 16 & 17 Thence North 1929 chains wire fence on South Side County Road 1929 chains set Stone 6 x 10 x 23 in for 1/8 cone 3980 chains set Stone 7 x 10 x 20 inches marked 1/4 for 1/4 Sec cone between Sec 8 & 9 7960 set Stone 8 x 12 x 19 inches marked for corner to Sec 4 = 5 = 8 & 9 2000 chains set Stone for 1/8 cone 40 chains set Stone 8 x 12 x 24 inches for 1/4 Sec cone between Sec 4 and 5 I started at the S.W. corner Sec. 8 Thence East 4020 chains set stake for temporary 1/4 Sec corner 8040 chains set temporary stake for corner to Sec. 8 = 9 = 16 and 17 in Slough Thence East 2010 chains set temporary stake for 1/8 cone 8042 chains No come Thence East 8018 chains no come but 8065 chains the come to Sec 10 = 11 = 14 & 15 - making an excess of 47 links in 3 miles over U.S. Field Notes. or 16 links to each mile I then started at 1/4 Sec cone on East Side Sec 4 Thence West through Sec 4 at 4021 chains the center Sec. 4 8030 west boundary Sec. 4 I then started at 1/4 Sec cone on South Side Sec 4 Thence North through center Sec 4 20 chains set temporary 1/16 cone 3987 chains the center sec 4 Planted a Stone 6 x 12 x 22 marked C.S. Thence South 1993 chains set Stone 6 x 16 x 21 in marked 1/16 for center of 1/4 Sec 4 2009 chains set Stone 6 x 10 x 26 in marked 1/16 for center of 1/4 Sec 4 Thence South 1996 chains set Stone 8 x 6 x 24 inches for 1/8 cone on South Side & W 1/4 Sec. 4 The North Side S.W. 1/4 Sec 4 a Stone 6 x 6 x 15 - I then started at 1/4 Sec cone on North Side Thence South 4000 chains set temporary stake for center Sec 8 at 60 chains set stake for 1/4 Sec cone on South Side Sec. 8 Thence West through the 1/4 Sec cone on East Side Sec 8 Thence West through center Sec 8 4028 chains set Stone 6 x 12 x 18 for center Sec 8 4009 chains west boundary Sec. 8 at 1/4 Sec on between Sec 7 and 8 I started at 1/8 initial corner on west side & W 1/4 Sec. 8 Thence East 4027 chains set Stone 7 x 12 x 23 at 8042 chains 1/8 cone at the 6 x 10 x 26 - Thence East 2025 chains set Stone 6 x 18 x 20 in for center of W 1/4 Sec 9 I started at 1/4 Sec cone on North Side Sec 5 Thence South 370 chains Sloughs 148 links across 3936 chains center Sec. 5 - 3973 chains 1/4 Sec cone between Sec 5 and 8 I then started at 1/4 Sec cone on west side Sec 5 Thence East - 20 chains set Stone 7 x 12 x 18 in for 1/4 cone in center W 1/2 Sec 5 4007 chains center Sec 5 set Stone 6 x 10 x 18 for center Sec. 5 - 8038 chains 1/4 Sec cone between Sec. 4 and 5 - I then started at 1/8 cone on South Side S.W. 1/4 Sec. 5 Thence through center W 1/2 Sec. 5 - 3982 chains the center W 1/2 7830 chains Sloughs 127 links across 7957 1/8 corner on North Side N.W. 1/4 Sec 5 on North Bank of Sloughs I then started at corner to Sec 5 = 6 = 31 & 32 Thence North 4061 chains the 1/4 Sec cone between Sec. 30 & 32 a mound dug up decayed stake and planted a Stone 4 x 10 x 18 in for 1/4 Sec cones between Sec 30 & 33 8000 found no corner Thence North 4000 found no 1/4 Sec cones 8065 chains

A Stone placed by Moses Austin County Surveyor in accordance with what Settlers told him as to the original location of the corner to Sec 19 = 20 = 29 and 30 I then started at the corner to Sec 20 = 21 = 28 & 29 Thence South 8016 chains to corner to Sec 28 = 29 32 and 33 found the old stake and a large Stone along side I then started at the S.E. corner of Sec 32 Thence North 3571 chains Grand Round River 190 links wide 4079 chains the 1/4 Sec cone between Sec 32 and 33 the old mound of stake decayed I planted a Stone 8 x 12 x 17 marked 1/4 for 1/4 Sec cone Thence North 20 chains set Post for temporary 1/8 cone 2900 chains Grand Round River 244 links wide 4118 chains the corner to Sec 28 = 29 = 32 & 33 from which I run South - 2059 chains and set Stone 7 x 14 x 19 inches for 1/8 cone on East Side N.E. 1/4 Sec. 32 I then started at the N.E. corner Sec 32 Thence West between Sec 32 & 29 at 3992 chains found no 1/4 Sec corner at 7984 chains found no Sec cone Thence West 4000 chains found no 1/4 Sec cone 7809 chains intersect West boundary of Township making a deficiency of 66 links as per U.S. Field Notes I then started at the 1/4 Sec cone on South Side Sec 32 Thence North 4000 set stake for temporary center Sec 32 at 60 chains set stake for temporary 1/16 cone in center North 1/2 Sec 32 8145 chains intersect North boundary Sec 32 I then started on offset of 590 chains North of 1/4 Sec cone on East Side Sec 32 Thence West on offset 3969 intersect center N.E. 1/4 Sec and set back South 590 chains to center Sec 32 Thence West through center W 1/2 Sec 32 3050 chains Grand Round River 104 links wide 4050 chains 1/4 Sec corner between Sec 31 & 32 from which I run East 4000 set Stone 6 x 12 x 18 inches marked C.S. for center Sec. 32 Thence North 4050 chains and planted a Stone 5 x 12 x 19 inches marked 1/16 for center of N 1/2 Sec 32

4061

20 4025 4015 J. Winifred County Surveyor