

Surveyed for W.A. Coughanour Feb. 28 1888

By J.W. Kimbrell Dep't Co. Surveyor Plat No. 23

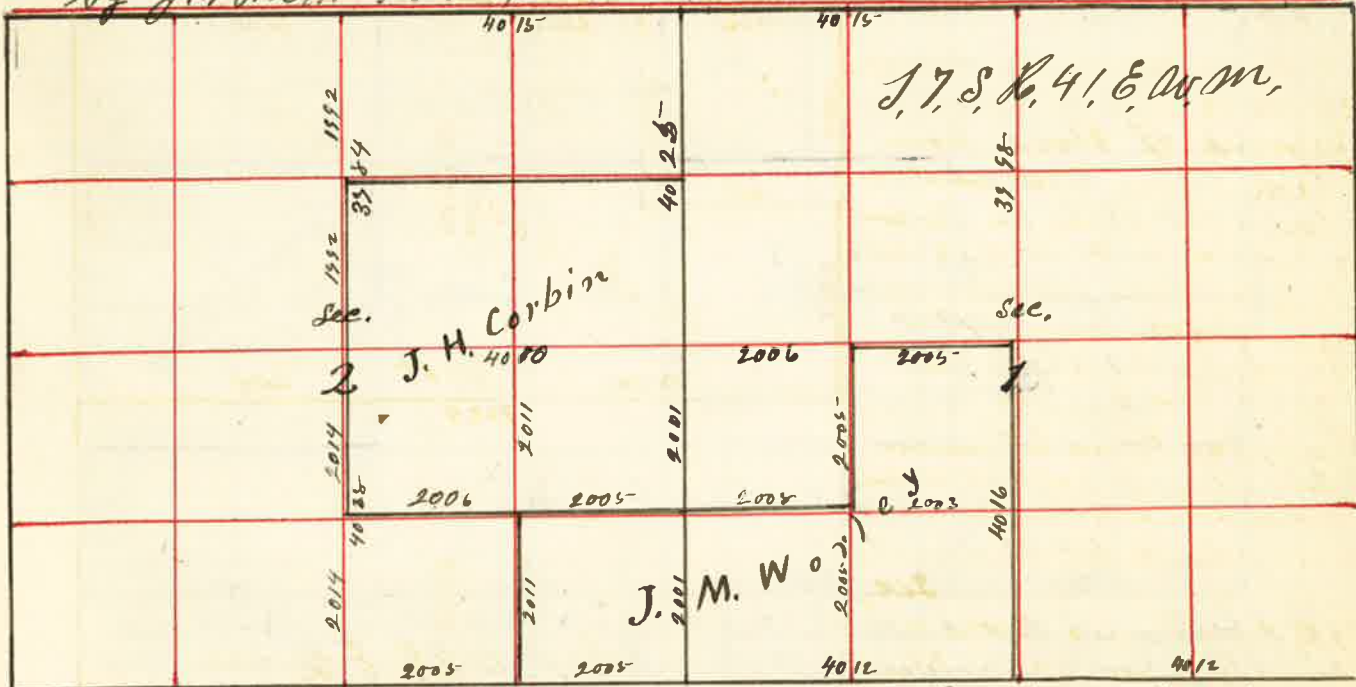
I proceeded to the N.W. corner of Sec 19 which is a Stake in mound of Stone from which I run East and at 18 chains set stake for temporary 1/8 corner and at 3824 chains the 1/4 sec corner between Sec 18 & 19 from which I run West at 2012 chains set stake built mound and dug pits for 1/8 corner. The 1/4 sec corner between Sec 18 & 19 thence East at 40 chains to Sec corner to Sec 17 = 18 = 19 Sec. Thence South 40 chains the 1/4 sec corner between Sec 19 & 20 thence West 7824 chains to 1/4 sec corner between Sec 19 & 20 Thence North at 20 chains set post for temporary 1/8 corner and at 4005 chains the Sec corner to Sec 18 = 19 = 18 & 24 from which I run South on true line and at 2002 chains Grove Stake and built mound of Stone for 1/8 corner thence East 1812 chains set temporary stake for 1/8 corner. I then started at the 1/4 Sec corner between Sec 18 & 19 thence South through Sec 19 at 20 chains set stake for temporary 1/8 corner and at 4008 chains intersect East and West line through Sec 19 and at 7995 chains I intersect South boundary of Sec 19 10 links West of 1/4 sec corner from which I run North on true line and at 3998 chains set post for center of Sec 19 and at 2001 chains set stake for center of N.W. 1/4 Sec 19 from which I run South 2002 chains and planted stake built mound dug pits &c for 1/8 corner in center of N.W. 1/4 Sec 19



J.W. Kimbrell Dep't Co. Surveyor

Surveyed for Worley & Corbin March 16 1888

By J.W. Kimbrell Dep't Co. Surveyor Plat No. 24



I started at 1/4 sec corner on South side of Sec. 2 thence East at 2005 chains to corner at 4010 chains the Sec corner to Sec 1 = 2 = 11812 thence East at 20 chains set stake for temporary 1/8 corner at 40 chains set stake for temporary 1/4 sec corner at 6025 chains intersect East boundary 24 links South of corner to Sec 1 = 12 = 6887 from which I run West on true line and at 4012 chains Grove Stake and built mound of Stone around for 1/4 sec corner between Sec 1 & 2 at 6018 chains set stake built mound and dug pits for 1/8 corner. I then started at the 1/4 sec corner between Sec 1 & 2 thence North at 20 chains set stake for 1/8 corner at 4014 chains the 1/4 sec corner between Sec 1 & 2 thence West on true line and at 40 chains set stake for temporary 1/8 corner and at 60 chains set stake for temporary 1/4 sec corner and at 60 chains set stake for temporary 1/8 corner and at 60 chains set stake for temporary 1/4 sec corner and at 6030 chains the 1/4 sec corner on North side of Sec. 2 from which I run East at 2007 chains set stake for 1/8 corner and at 4015 chains set stake for temporary 1/8 corner to Sec 1 = 2 = 35836 thence South at 20 chains set stake for temporary 1/8 corner and at 40 chains set stake for temporary 1/4 sec corner and at 60 chains set stake for temporary 1/8 corner and at 6027 chains the Sec corner to Sec 1 = 2 = 11812 from which I run North on true line and at 2001 chains set stake dug pits for 1/8 corner and at 4002 chains planted stake dug pits &c and built mound for 1/4 sec corner between Sec 1 & 2 thence East at 20 chains set stake for 1/8 corner at 4011 chains intersect North and South side 16 links North of first boundary stake for center of Sec 2 and set stake on East side of Sec. 1 but did not chain the last 1/4 mile. I then run West from center 2005 chains Grove Stake dug pits built mound for 1/8 corner thence South 2005 chains set stake and built mound of Stone for center of S.W. 1/4 Sec. 1 East 2003 chains to 1/8 corner 2005 chains set stake for center of S.W. 1/4 Sec. 1 I started at 1/4 sec corner between Sec 1 & 2 thence West at 20 chains set stake for temporary 1/8 corner at 40 chains set stake for temporary 1/4 sec corner. I started at 1/4 sec corner between Sec 2 = 35 thence South at 20 chains set stake for 1/8 corner at 3584 chains the center Sec 2 at 8012 chains the 1/4 sec corner between Sec 2 & 3 from which I run North and at 2014 chains set stake built mound dug pits for 1/8 corner at 4028 set stake dug pits &c built mound of Stone for 1/8 corner at 6020 chains set stake built mound of Stone for 1/8 corner. I started at 1/8 corner on North side of Sec. 1/4 Sec 2 thence South 2011 chains and planted stake built mound of Stone dug pits &c for 1/8 corner in center of S.E. 1/4 Sec. 2.

J.W. Kimbrell Dep't Co. Surveyor