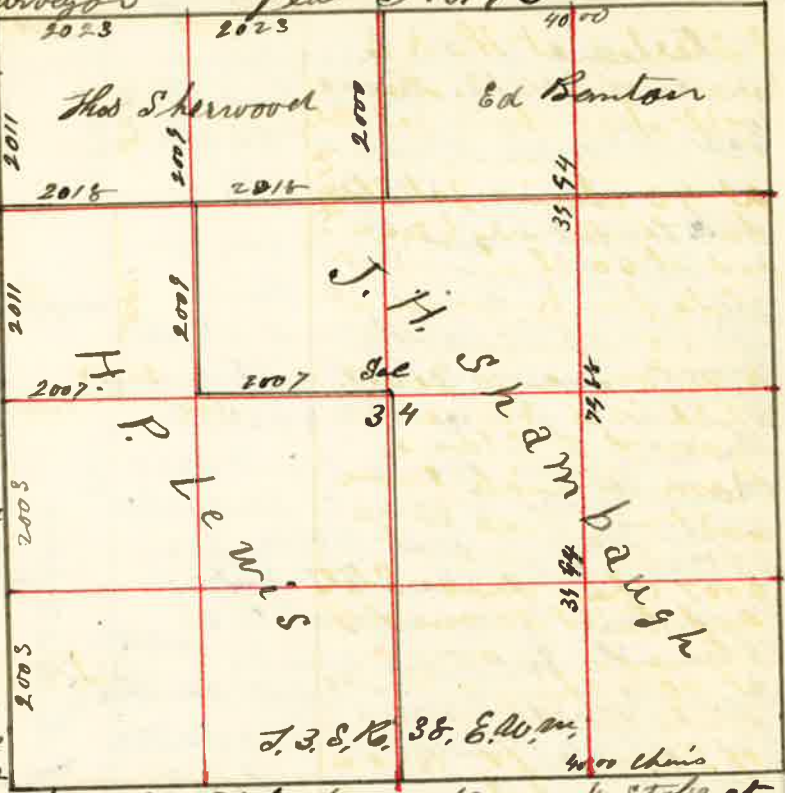


14
 Surveyed for Lewis Shambaugh & Sherwood Oct 5th 1857

by J.W. Kimbrell Dep't Co. Surveyor Plat No. 16

I started at the S.E. corner of Sec. 34 thence west 40 chains to 1/4 Sec. corner on South side of Sec. 34. I then proceeded to the S.W. corner of Sec 34 thence North 20° E at 20 chains set stake for 1/4 corner and at 4006 chains the 1/4 sec. corner. Drove stake re-built mound of Stone around stake at 6006 chains set stake for temporary 1/4 corner at 8028 chains the N.W. corner of Sec 34 from which I run South on true line and at 2011 chains drove stake and built mound of Stone for 1/4 corner and at 6014 chains drove stake and built stone mound for 1/8 corner, from which a line 20 inches bears S 34° 30' west 51.60



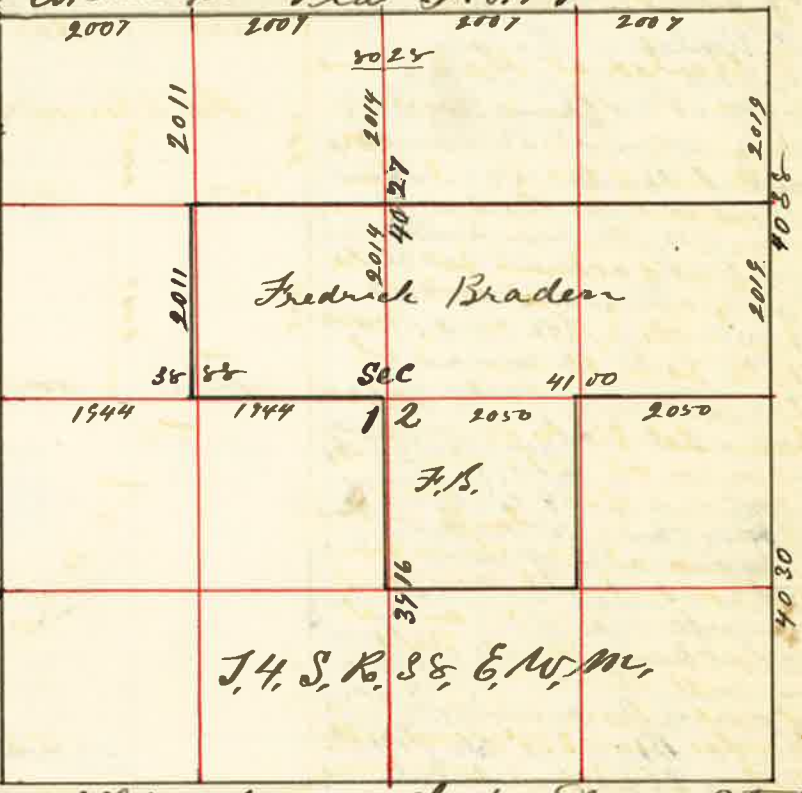
I then started at N.W. corner of Sec 34 thence East at 20 chains set stake for temporary 1/4 stake at 4046 chains the 1/4 Sec corner on North side of Sec 34 from which I run West at 2023 chains set stake for 1/4 corner. I started at 1/4 Sec. corner on West side of Sec 34 thence East at 4014 chains the center of Sec 34 Re-entire stake and built mound of Stone for center of Sec 34 from thence I run West at 2007 chains drove stake and built mound of Stone for 1/16 corner thence North 20° E at 2009 chains Drove stake and built mound of Stone for 1/16 corner in center of N.W. 1/4 Sec 34 thence East 2012 chains and Drove stake and built mound of Stone for 1/16 corner thence 20 chains to 1/4 Sec. corner on North side of Sec 34 thence East 40 chains to the N.E. corner of Sec 34 thence West 20 chains and from there I run South and at 1297 chains set stake for 1/16 corner at 8994 the 1/16 corner and at 7988 chain the 1/4 corner on East side of S.E. 1/4 Sec. 34

J.W. Kimbrell Dep't Co. Surveyor

Surveyed for Fredrick Braden Oct 7th 1857

by J.W. Kimbrell Dep't Co. Surveyor Plat No. 17

I started at the N.E. corner of Sec 12. thence West at 20 chains set stake for temporary 1/4 corner at 40 chains set stake for temporary 1/4 sec. corner and at 60 chains set stake for 1/4 corner at 8028 chains the N.W. corner of Sec 12 which is a stone in mound of Stone. from which I run East on true line over 21° E and at 2007 chain drove stake and built mound of Stone for 1/4 corner at 4014 chains Drove stake built mound of Stone for 1/4 Sec



corner between Sec 12 & 12 at 6021 chains Drove stake in mound of Stone for 1/4 corner 8028 chains the Sec corner to Sec 12 = 687 J 4 5 6 38 39 E W M, from which I run South at 20 chains set stake for 1/4 corner at 4038 chains the 1/4 Sec corner on East side of Sec. 12 from which I run North at 2019 chains Drove stake and built mound of Stone for 1/4 corner I then started at 1/4 Sec corner on South side of Sec. 12 thence North at 40 chains set Post for temporary center at 60 chains set Post for temporary 1/4 corner. At 7943 chains the 1/4 Sec. corner on North side of Sec 12 I then started at 1/4 Sec corner on West side of Sec 12 thence East at 20 chains set Post for temporary 1/16 corner at 3888 feet rounded stake to center center 84 links South of first rounded stake to center at 60 chains set stake for temporary 1/16 corner at 7988 chain the 1/4 Sec corner on East side of Sec. 12, from which I run West on true line and at 2050 chains set stake for 1/16 corner at 4100 chains Built mound of Stone for center to Sec. 12 at 6044 chains Planted Stone in mound Stone for 1/4 corner thence 2011 chains Planted Stone in mound of Stone for 1/4 corner of N.W. 1/4 Sec 12 I started at the center of Sec 12 and run North 2014 chains and set stake in mound of Stone for 1/16 corner 2014 chains to 1/4 Sec corner on North side of Sec. 12. J.W. Kimbrell Dep't Co. Surveyor