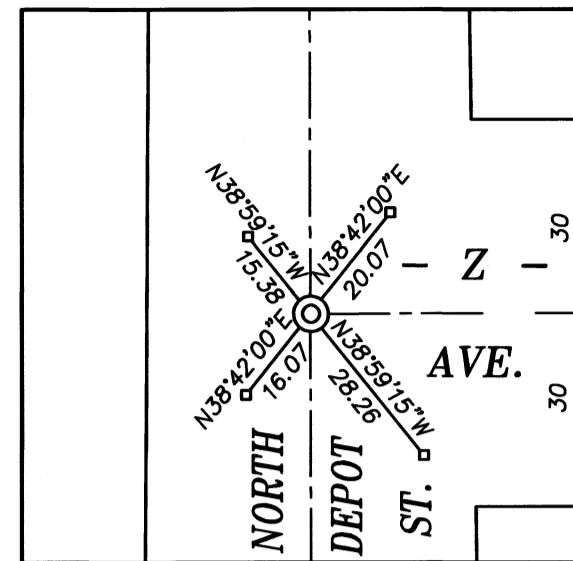


BASIS OF BEARING

Forward bearing as published by the U.S.C. and G.S. from Δ COLLEGE to Δ VALLEY Dated 1946.

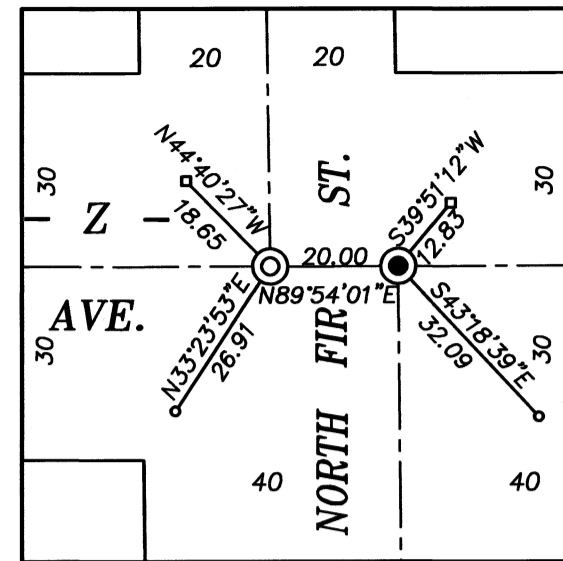
SCALE: 1" = 80'

TWP 2 SOUTH
Centerline of Spruce St. falls
5 ft. East of quarter corner
TWP 3 SOUTH



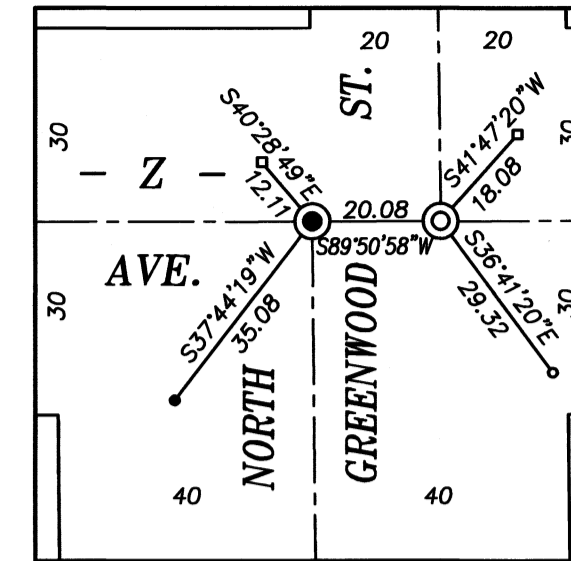
NORTH DEPOT ST. REFERENCE DETAIL

DETAIL SCALE: 1"=30'



NORTH FIR ST. REFERENCE DETAIL

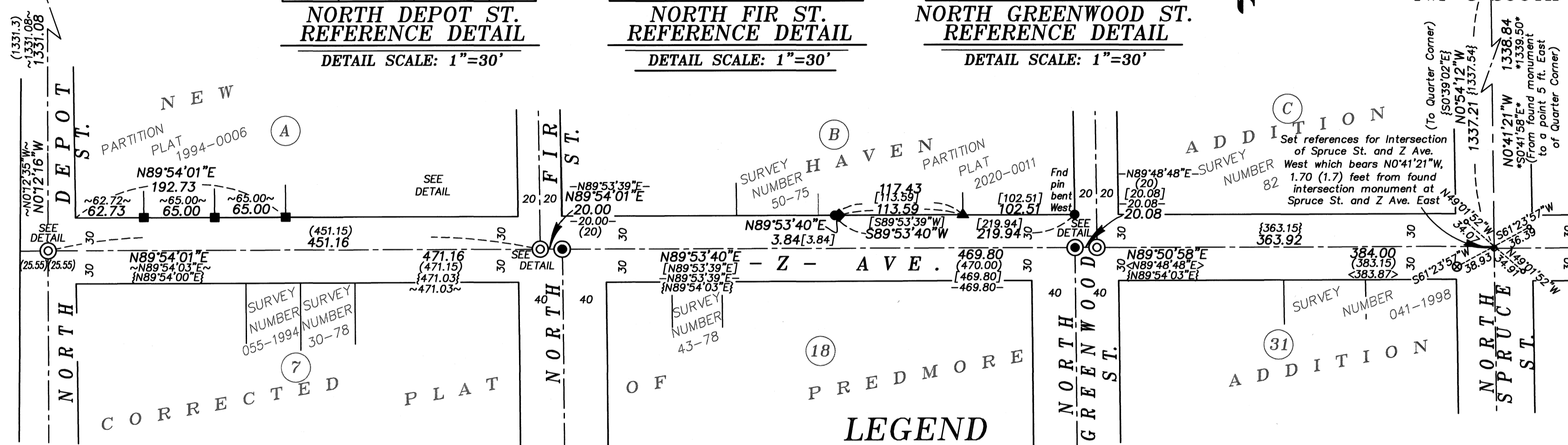
DETAIL SCALE: 1"=30'



NORTH GREENWOOD ST. REFERENCE DETAIL

DETAIL SCALE: 1"=30'

TWP 2 SOUTH
TWP 3 SOUTH



NARRATIVE

This survey was done at the request of Kyle Carpenter, Public Works director for the City of La Grande. Mr. Carpenter wanted to have select center line monuments following a paving project. I recover the monuments as shown hereon. The monuments at the intersection of Fir St/Z Ave(South) and Greenwood St/Z Ave(South) were recovered prior to paving and replaced at their tied positions.

To place Z Ave. West/Spruce intersection I run a line from a point 5 ft. East of the Quarter corner to the monument at the intersection of Z Ave. East and hold the record 1.7 ft. North, as per McLain survey. At the intersection of Depot St./Z Ave. I place it at record distance as per Survey Number 012-2013 along N. Depot from the found monument at the North end of Depot St on the Section line, and record distance along Z Ave. as per found monuments set by Partition Plat 19940006T.

At the intersection of North Greenwood St/Z Ave (North) I hold the record 20.08 ft distance as per Partitions 2019-0011 and 2020-0011. At the intersection of For St/Z Ave(North), I hold the 20.00 foot distance as per McLain survey.

I find no other unusual conditions with this survey.

REFERENCE MATERIAL

- Survey Number 82
 - Survey Number 50-75
 - Survey Number 30-78
 - Survey Number 43-78
 - Survey Number 13-80
 - Survey Number 63-80
 - Survey Number 63-80
 - Survey Number 18-89 (1922 Monumentation)
 - Survey Number 041-1998
 - Survey Number 029-1999
 - Survey Number 006-2011
 - Survey Number 013-2018
 - Survey Number 040-2021
 - Partition Plat 1994-0006
 - Partition Plat 1997-0031
 - Partition Plat 2007-0005
 - Partition Plat 2019-0011
 - Partition Plat 2020-0011
- Plat of New Haven Addition to La Grande
Corrected Plat of Predmore Addition to La Grande

- ◆ Found iron pipe set by Survey Number 18-89 (McLain's 1922 remonumentation of La Grande)
- Found iron pipe set by Survey Number 18-89 (McLain's 1922 remonumentation of La Grande), Set 5/8" x 30" iron pin with 2 1/2" brass cap and 4" collar of concrete
- ⊙ Found 2 1/2" brass cap in valve box as per Union County Monumentation Record 007-2001R
- Found 5/8" iron pin with plastic cap marked BGB SURVEY MARKER, set by Survey Number 029-1999
- Found 1 1/2" brass cap in concrete set by Survey 006-2011
- ◆ Found 5/8" iron pin with plastic cap marked BGB SURVEY MARKER, set by Survey Number 040-2021
- Found 5/8" iron pin with plastic cap marked BGB SURVEY MARKER, set by Partition Plat 1994-0006
- ▲ Found 5/8" iron pin with plastic cap marked BGB SURVEY MARKER, set by Partition Plat 2020-0011
- ⊗ Found unrecorded 1 1/2" brass medallion, used as reference
- Found lead plug with brass screw reference set by Survey Number 18-89
- Set brass screw in lead plug and brass washer marked OPLS 83571
- Set cotton spindle in asphalt
- ⊙ Set 5/8" x 30" iron pin with 2 1/2" brass cap marked BGB SURVEY MARKER in collar of concrete
- () Record measurement as per Survey Number 18-89
- * * Record measurement as per Survey Number 63-80
- ~ ~ Record measurement as per Partition Plat 1994-0006
- { } Record measurement as per Partition Plat 1997-0031
- < > Record measurement as per Partition Plat 2007-0005
- - Record measurement as per Partition Plat 2019-0011
- [] Record measurement as per Partition Plat 2020-0011

LEGEND

UNION COUNTY SURVEYOR
Date Received 5/12/26
Date Filed 5/12/26
By [Signature]
File No. 022-2026

REGISTERED PROFESSIONAL LAND SURVEYOR

OREGON JUNE 2, 2010
JEFFREY S. HSU
83571

Renewal Date: June 30, 2027

BAGETT, GRIFFITH & BLACKMAN
2006 Adams Avenue, LaGrande, Oregon
Map of Survey
Center line monumentation of Z Avenue from Spruce St. to Depot St., City of La Grande
UNION COUNTY, OREGON

SURVEYED FOR	City of La Grande
SURVEYED BY	J. S. H.
Scale: 1" = 80'	Drawn by: J. S. H. Apr. 2026