

BASIS OF BEARINGS

Forward bearing from the Southwest corner of Section 1 to the Northwest corner of Section 1, Township 2 South, Range 35 East of the Willamette Meridian, being North 01°08'34" West, based on GPS Observations

REFERENCE MATERIAL

- GLO Contract Number 201 by John H. Hurlburt, Dated August 5, 1873
- GLO Contract Number 397 by Jacob C. Cooper, Dated July 1, 1881
- GLO Contract Number 451 by Rufus S. Moore, Dated June 12, 1882
- Union County monumentation records
 - Survey Number 11-82
 - Survey Number 026-1992
 - Survey Number 027-1992
 - Survey Number 044-1994
 - Survey Number 043-1995
 - Survey Number 027-2003
 - Survey Number 015-2011
 - Survey Number 016-2011
 - Survey Number 016-2014

LEGEND

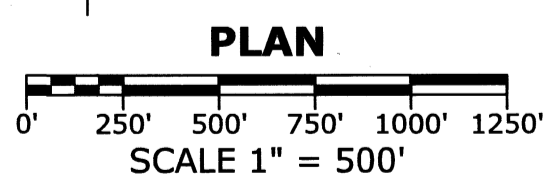
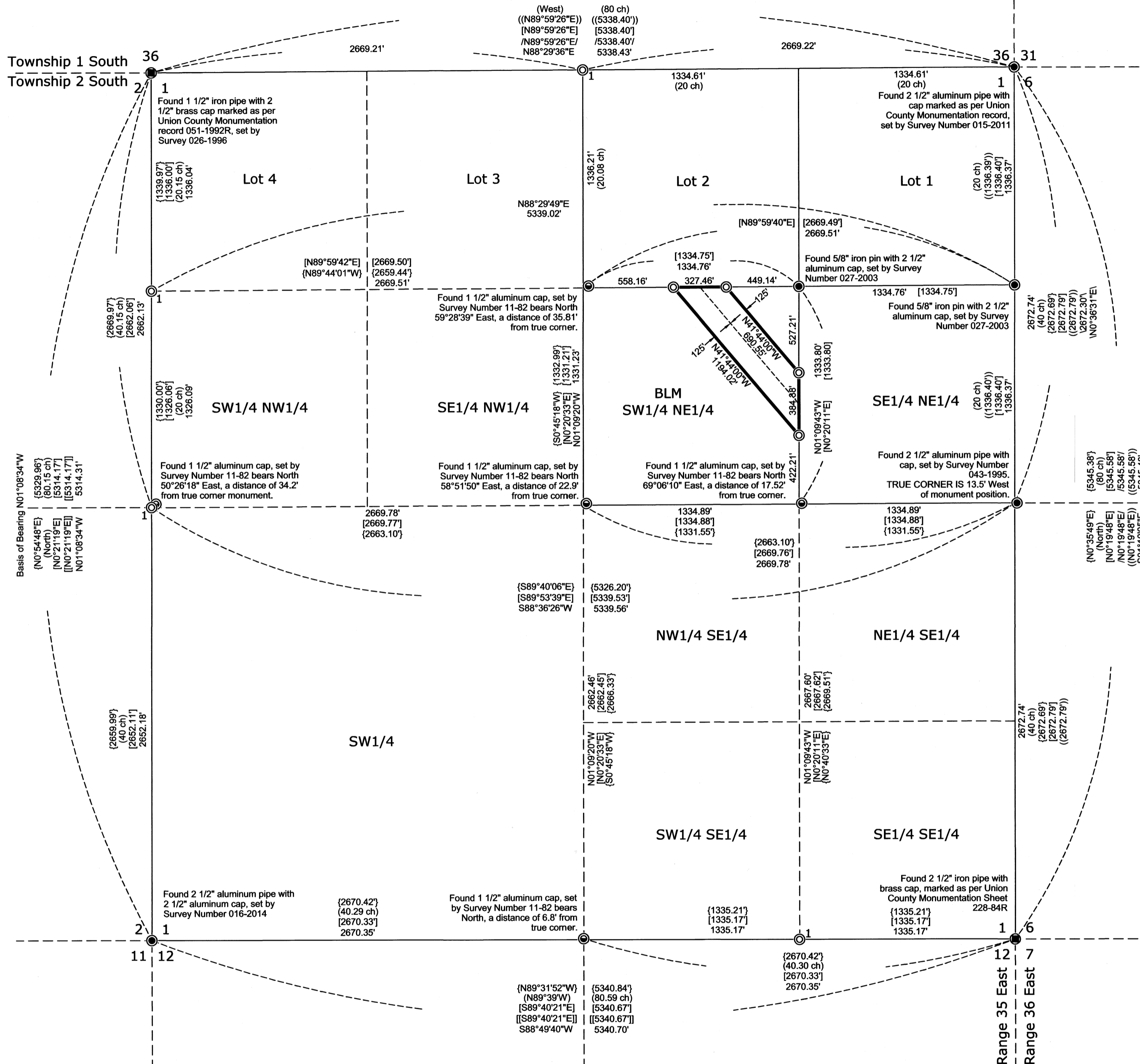
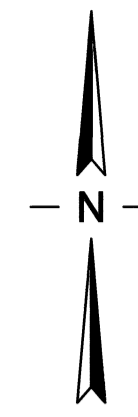
- Found 1 1/2" aluminum monument as per Union County monumentation records (unless otherwise noted)
- Found 2 1/2" aluminum monument as per Union County monumentation records (unless otherwise noted)
- Found brass cap as per Union County monumentation records (unless otherwise noted)
- ⊙ Found 5/8" x 30" iron pin with 2 1/2" aluminum cap marked per Union County monumentation record
- ⊙ Found 5/8" x 30" iron pin with plastic cap marked L.S. 101724
- () Record information as per field notes of GLO Contract No. 451, executed by Rufus Moore
- { } Record information of survey number 11-82
- \ \ Record information of survey number 043-1995
- [] Record information of survey number 027-2003
- / / Record information of survey number 015-2011
- (()) Record information of survey number 016-2011
- [[]] Record information of survey number 016-2014

NARRATIVE

This survey was performed to meet the requirements of the Right-of-Way Marking Plan for the Boardman to Hemingway Transmission Line Project. The purpose of this survey was to monument the Idaho Power Company right-of-way where it enters and exits public lands, as required by said Right-of-Way Marking Plan. During record research and the corresponding field reconnaissance, multiple and conflicting locations for controlling corners were identified. One set of controlling corners was established in Survey No. 11-82 by the Oregon Parks Department. It is noted in Survey No. 027-2003 that the Oregon Parks Department corners are in error from the original position. During the course of this survey the Oregon Parks Department was contacted and indicated that it no longer employs a surveyor and is unable to correct the corners set in error.

The four section corners of Section 1, Township 2 South, Range 35 East, were found and determined to be in accurate position, as shown on this map. Holding these section corners as controlling, the exterior corner locations were established by single proportionate measurement, following the 2009 BLM Manual. The results of those calculations are shown on this map.

The center of section was established at the intersection of the two quarter-section lines. The Center-North Sixteenth Corner was established by single proportionate measurement between the Center Quarter Corner and the North Quarter Corner. A monument was found at the Northeast Sixteenth Corner, and its position was held as controlling. The Center-East Sixteenth Corner was established at the midpoint between the Center of Section and the calculated true position of the West Quarter Corner.



UNION COUNTY SURVEYOR
 Date Received 4/30/26
 Date Filed 4/30/26
 By [Signature]
 File No. 012-2026

4/30/26
 REGISTERED PROFESSIONAL LAND SURVEYOR
 [Signature]
 OREGON
 March 12, 2024
 VICKI J KLEMM
 101724LS
 EXPIRATION DATE: 6/30/27

RIGHT OF WAY BOUNDARY MONUMENTATION MAP	
SECTION 1, T.2S., R.35E., W.M.	
UNION COUNTY, OREGON	
Client: Idaho Power Company	
Date: April 29, 2026	
PC: PTW - DR: YID - CK: VK	
Job No.: QSI3123-5	Sheet: 1 of 1
Revision No.: 0	Scale: As Shown
Dwg Name: QSI3123-5 - 90-4-R0-GRID	