

# BASIS OF BEARING

Forward bearing as published by the U.S.C. and G.S. from  $\Delta$  COLLEGE to  $\Delta$  VALLEY Dated 1946.

SCALE: 1" = 30'

## LEGEND

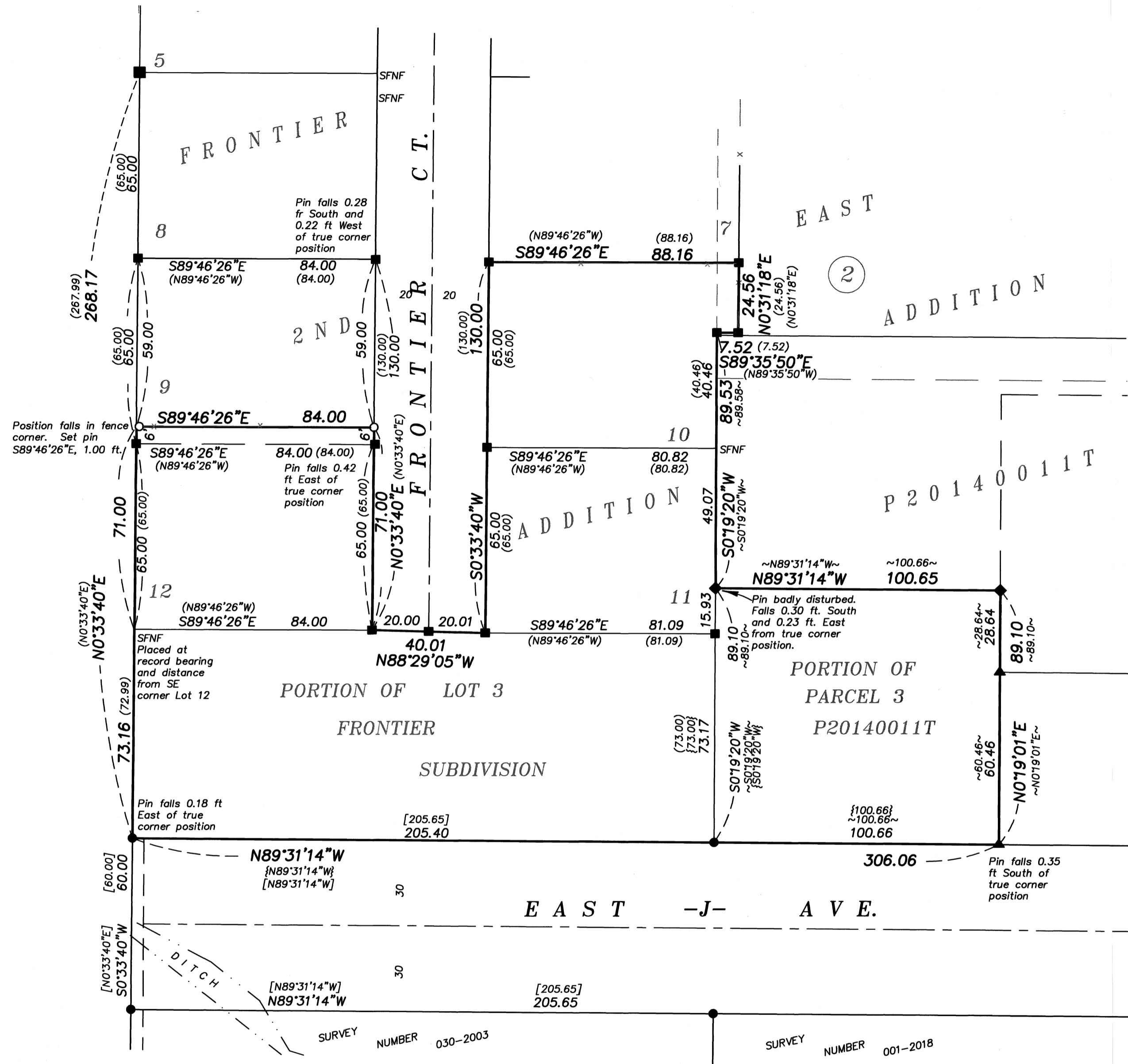
- Found 5/8" iron pin with plastic cap marked BGB SURVEY MARKER, set by Survey Number 030-2003
- Found 5/8" iron pin with plastic cap marked BGB SURVEY MARKER, set by plat of Frontier Second Addition
- ▲ Found 5/8" iron pin with plastic cap marked BGB SURVEY MARKER, set by Partition Plat 20140011T
- ◆ Found 5/8" iron pin with plastic cap marked BGB SURVEY MARKER, set by Survey Number 036-2015
- Set 5/8" x 30" iron pin with plastic cap marked BGB SURVEY MARKER
- Centerline
- x- Fenceline
- ( ) Record measurement as per plat of Frontier Second Addition
- [ ] Record measurement as per Survey Number 030-2003
- ~ ~ Record measurement as per Survey Number 026-2015
- { } Record measurement as per Partition Plat 20140011T

## REFERENCE MATERIAL

Plat of Frontier Subdivision  
Plat of Frontier Second Addition  
Partition Number 20090012T  
Partition Number 20140011T  
Survey Number 030-2003  
Survey Number 036-2015

### DEED REFERENCES

Microfilm Document Number 20121048  
Microfilm Document Number 20130751  
Microfilm Document Number 20190561  
Microfilm Document Number 20231970



## NARRATIVE

This survey was done at the request of Gust Tsiatsos, who wanted the exteriors monumented in preparation for a subdivision. Exteriors of the properties were monumented by Survey 030-2003, Frontier Subdivision, Frontier 2nd Addition, Partition Plat 20140011T and Survey 036-2015. Most of these pins are relatively harmonious with the aforementioned plats and surveys. Many of the monuments along the West side of Frontier Court have been disturbed. Due to the harmony in undisturbed monument position from other lots of this subdivision, I opt to hold a record bearing and distance from the South east corner of Lot 12 to place the position of the disturbed pins. I find no other unusual conditions with this survey.

REGISTERED  
PROFESSIONAL  
LAND SURVEYOR

OREGON  
JUNE 2, 2010  
JEFFREY S. HSU  
83571

Renewal Date: June 30, 2019

UNION COUNTY  
SURVEYOR

Date Received 4/26/26

Date Filed 4/28/26

By [Signature]

File No. 011-2026

**BAGETT, GRIFFITH & BLACKMAN**

2006 Adams Avenue, LaGrande, Oregon  
Map of Survey

Situated in Block 2, East Addition to the  
City of La Grande  
SE1/4NW1/4 Sec 9, T3S R38E

UNION COUNTY, OREGON

SURVEYED FOR Gust Tsiatsos

SURVEYED BY J. S. H.

Scale: 1" = 30' Drawn by: J. S. H. Apr. 2026

SURVEY NUMBER 011-2026