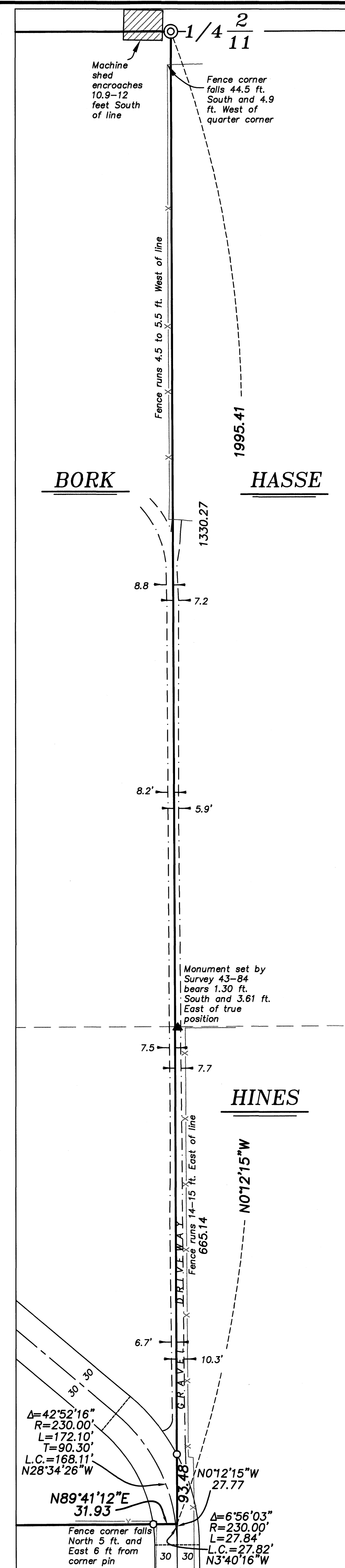


DETAIL -A-  
SCALE: 1"=100'



DETAIL -B-  
SCALE: 1"=100'

## BASIS OF BEARING

Forward bearing as published by the U.S.C. and G.S. from Δ COLLEGE to Δ VALLEY  
Dated 1946.

SCALE: 1"=200'

## LEGEND

- Found monument as noted, set by survey 034-2012, marked as per Union County Monumentation Records
- ⊙ Found monument as noted, marked as per Union County Monumentation Records
- ◆ Found 5/8" iron pin set by Survey Number 9-72
- ▲ Found 5/8" iron pin set by Survey Number 43-84
- Found 5/8" iron pin with plastic cap marked LS 1952 unless otherwise noted, set by Survey No. 024-1998
- Set 5/8" x 30" iron pin with plastic cap marked BGB SURVEY MARKER
- ⊙ Set 2 1/2" x 30" aluminum pipe with 3" aluminum cap, marked as per monumentation record filed separately
- Center line
- Fence line
- Edge of gravel
- ( ) Record measurement as per deed
- [ ] Record measurement as per Survey 024-1998
- / / Record measurement as per Survey 034-2012

## REFERENCE MATERIAL

Union County Monumentation Records	DEED REFERENCES
Survey Number 19-67	Deed Book 45, Page 429
Survey Number 43-84	Deed Book 68, Page 591
Survey Number 024-1998	Deed Book 68, Page 601
Survey Number 020-2007	Deed Book 77, Page 409
Survey Number 034-2012	Deed Book 103, Page 496
Survey Number 004-2019	Microfilm Number 19961488
	Microfilm Number 20026460
	Microfilm Number 20090942
	Microfilm Number 20200739
	Microfilm Number 20231865

## NARRATIVE

This survey was performed at the request of Mystina Bork, on behalf of the owner Bob Bork. Ms. Bork wanted to monument the boundaries of the ownership. In Survey 43-84, Norm Paullus surveyed that tract to the East of the Bork ownership, shown hereon as the Hines tract. In this survey, he utilizes a double proportion to place the monuments along the East side of the Section 11. He again utilizes this break to place the tract shown hereon as the Parks tract, in Survey Number 024-1998.

Though other surveys have utilized this double proportioned position for the Northeast corner of Section 11, in Survey Number 034-2012, it was noted that the position of the Southeast corner of Section 11, if placed by double proportion was grossly discordant with the location of the road centerlines. The constructed roads were utilized to place this corner. A single proportionate position utilizing this monument was used to place the East quarter corner. I find the road to be a more likely perpetuation of the original corner positions, and I hold these corners set by 034-2012.

In Survey 020-2007, Greg Blackman places the West quarter corner by proportionate position and in Survey 004-2019, I place the South quarter corner by proportionate position. I accept these monuments in place. I make a diligent search for the North quarter corner, and can find no remaining evidence. I set this corner at proportionate position. This section subdivision differs from the one done by Paullus and I note the location of remaining monuments from those surveys from their true corner positions.

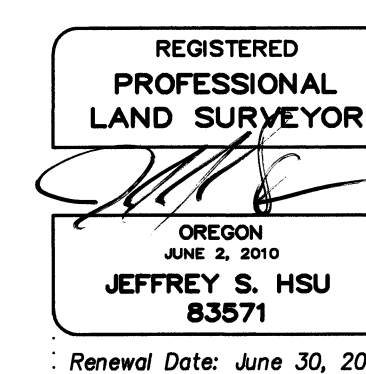
Along the Sullivan ownership, the legal description for the Bork deed is described by metes and bounds, starting at an even 40 rod distance North of the Center quarter corner. The Sullivan tract, however, is the senior deed (Book 45, page 429) and is described by aliquot part. I therefore hold the aliquot line along the Sullivan tract.

Despite the section subdivision differences between this survey and the Paullus surveys, I feel the methodology employed by Paullus in laying out the line between Bork and the Parks tract was sound, and I accept the remaining monuments (noting the most Northerly pin in slightly off the true section line). I replace the missing pin at the angle point by holding the deed distances West and South of the quarter corner.

I find the pins set by Paullus along the North right-of-way line of Buchanan Lane to follow the constructed road well and I hold these monuments, extending the alignment and holding the constructed centerline to the center of section line. I cannot find any official petition or dedication of this road in this area.

Along the North line, a machine shed encroaches and along the West line, a shed encroaches, as shown. Fencelines are off as shown. The line between the Bork tract and the Hasse and Hines tracts run down the near center of the existing driveway, with offsets shown in the detail. I can find no mutual easement or maintenance agreement concerning shared use of this road.

I find no other unusual conditions with this survey.



UNION COUNTY SURVEYOR	
Date Received	2/18/26
Date Filed	2/18/26
By	[Signature]
File No.	005-2026

BAGETT, GRIFFITH & BLACKMAN 2006 Adams Avenue, LaGrande, Oregon Map of Survey	
A survey of a tract of land situated in the Northwest quarter of Section 11, Township 3 South, Range 38 East of the Willamette Meridian	
UNION COUNTY, OREGON	
SURVEYED FOR	Mystina Bork
SURVEYED BY	J. S. H.
Scale: 1" = 200'	Drawn by: J. S. H. Feb. 2026

SURVEY NUMBER 005-2026