

BASIS OF BEARING

The South line of the Southeast quarter of Section 29 being North 89°28'12" East, as per Survey Number 013-2005

SCALE: 1"=800'

LEGEND

- Found 2 1/2" aluminum pipe with 2 1/2" aluminum cap, set by Survey 018-2016, marked as per Union County Monumentation Records, unless otherwise noted
- ⊙ Found 2 1/2" iron pipe with 3" brass cap, marked as per Union County Monumentation Records
- ⊙ Set 2 1/2" aluminum pipe with 2 1/2" aluminum cap, marked as per Union County Monumentation Records
- Set 5/8" x 30" iron pin with 2 1/2" aluminum cap marked as per Union County Monumentation Records filed separately
- Fenceline
- Fence post set on line
- () Record Measurement as per field notes of GLO Contract Number 388, executed by W. B. Barr
- [] Record measurement of Survey Number 48-80
- / / Record measurement of Survey Number 018-2016

REFERENCE MATERIAL

Union County Monumentation Records
Partition Plat 2008-0015T
Partition Plat 2007-0041T
Survey Number 48-80
Survey Number 013-1991
Survey Number 028-2003
Survey Number 013-2005
Survey Number 018-2016

Field Notes of GLO Contract Number 102, dated July 20th, 1863, executed by Timothy W. Davenport

Field Notes of GLO Contract Number 388, dated May 7, 1881, executed by W.B. Barr

DEED REFERENCES

Book 110, Page 15
Microfilm Document Number 135714
Microfilm Document Number 135588
Microfilm Document Number 20063211
Microfilm Document Number 20212904
Microfilm Document Number 2024627
Microfilm Document Number 20134274

NARRATIVE

This survey was done at the request of Todd Kurtz, on behalf of Manulife, land manager of the land within. I recover monuments as shown. South and West lines of Section 30 were surveyed by Survey 48-80. This survey utilized a proportionate position for the South quarter corner of Section 30. The distance between the controlling section corners are harmonious with the survey however, I find the quarter corner monument to be grossly out of position and set a new monument at true position. Section 29 was surveyed in Survey 018-2016. I find these monuments to be harmonious and accept them in place. I subdivide sections as per BLM Manual of Instructions 2009. I find fences off as shown. In the Southwest corner of the Northwest quarter of the Southeast quarter of Section 30 a cabin and outbuildings encroach as shown. I find no other unusual conditions with this survey.

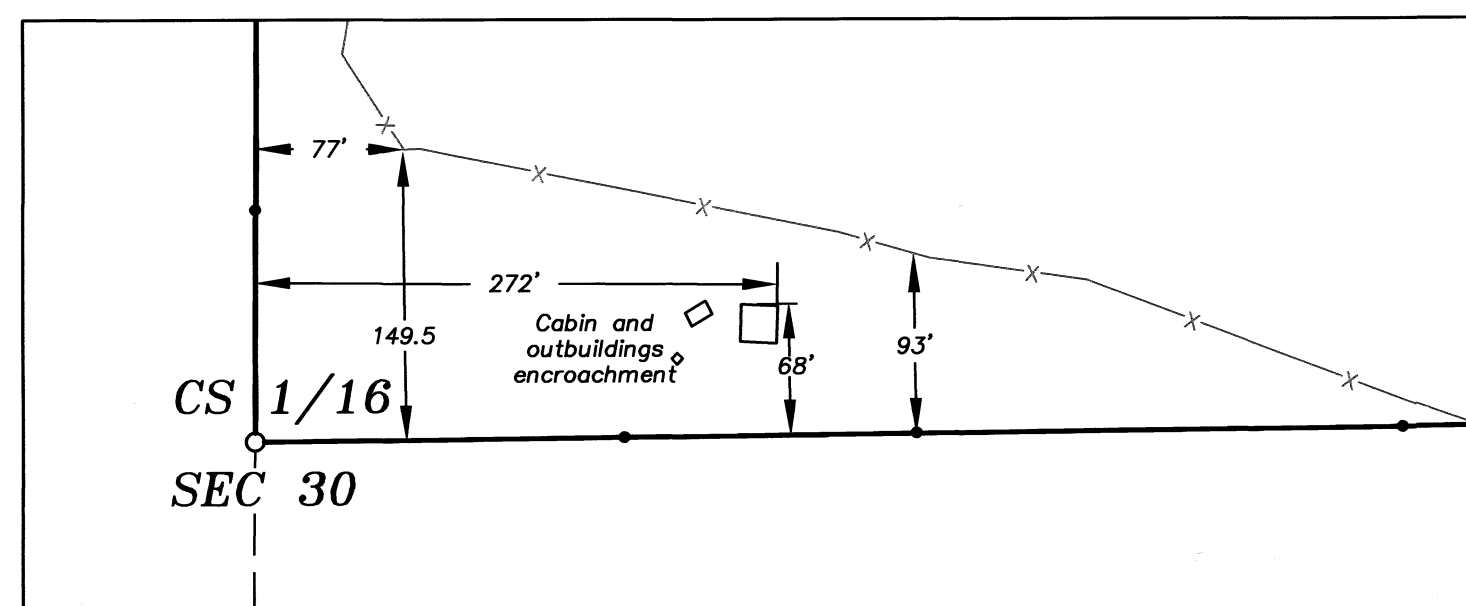
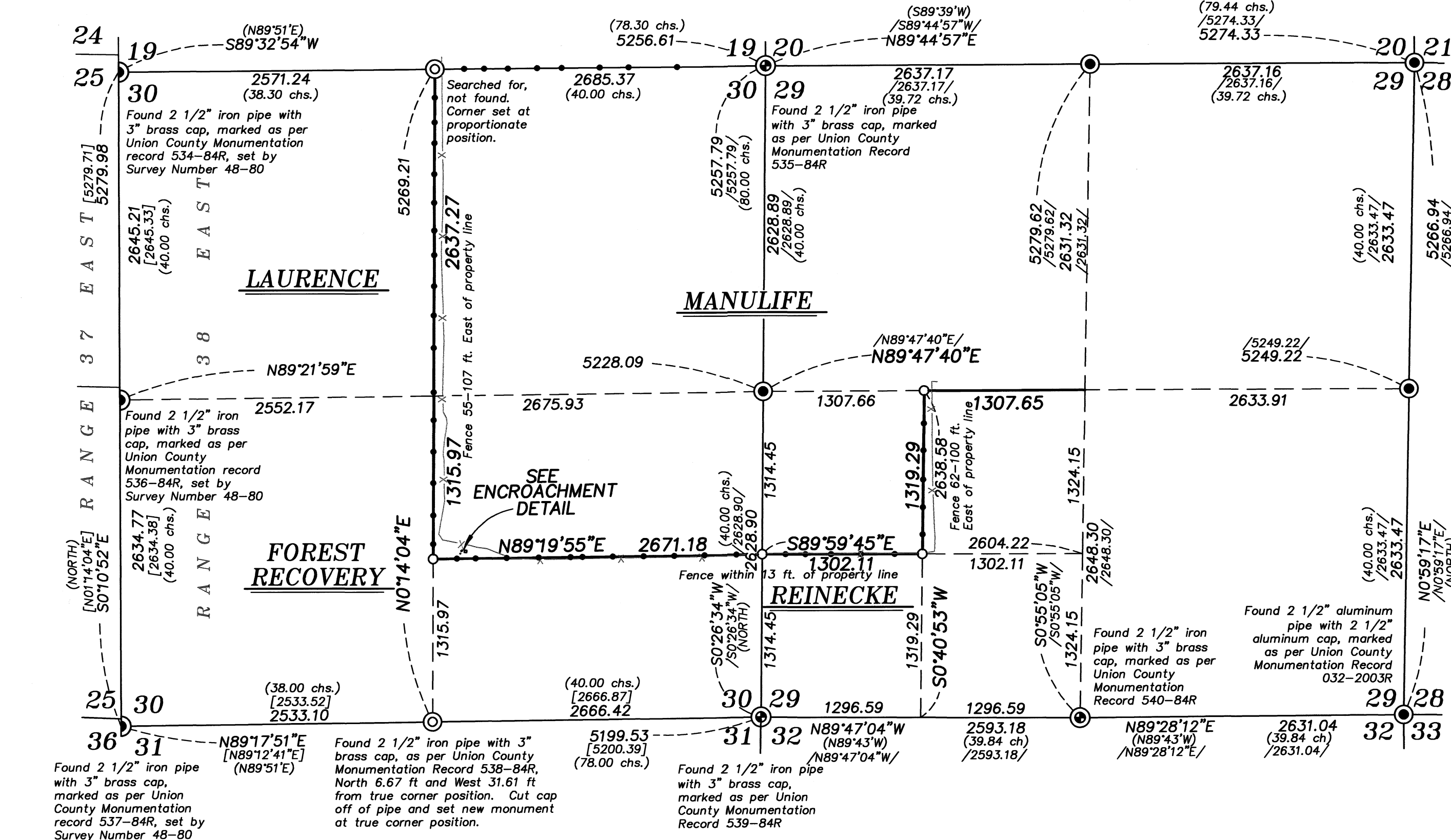
REGISTERED
PROFESSIONAL
LAND SURVEYOR

OREGON
JUNE 2, 2010
JEFFREY S. HSU
83571

Renewal Date: June 30, 2027.

UNION COUNTY SURVEYOR	
Date Received	8/20/25
Date Filed	8/20/25
By	[Signature]
File No.	028-2025

BAGETT, GRIFFITH & BLACKMAN	
2006 Adams Avenue, LaGrande, Oregon	
Map of Survey	
Situate in Sections 29 and 30, Township 4 South, Range 38 East of the Willamette Meridian	
UNION COUNTY, OREGON	
SURVEYED FOR	Manulife
SURVEYED BY	J. S. H.
Scale: 1" = 800'	Drawn by: K. A. T. July 2025



ENCROACHMENT DETAIL

SCALE: 1"=100'

SURVEY NUMBER 028-2025