

BASIS OF BEARING

Forward bearing as published by the U.S.C. and G.S. from Δ COLLEGE to Δ VALLEY Dated 1946.

SCALE: 1"=60'



NARRATIVE

This survey was done at the request of Kyle Carpenter, public works director for the City of La Grange. Mr. Carpenter wanted select monuments set following a paving project. I recover monuments as shown and find them harmonious with record measurements of Survey 106-78. I find the distance between the intersection of Harrison Ave. and Umatilla St. and the intersection of Division Ave. and Umatilla St. to be harmonious with the distance as per Survey Number 106-79 and place the intersection of Benton St. and Umatilla St. by rotation and scaling. I place the intersection of Alder Street and Benton Ave at record distance between the monument at Division Ave. and Alder St. and the monument at Lane Ave. and Alder St. as per Survey Number 106-79 as I find the distance identical to record. This a harmonious fit to the monuments at Walnut Street and Benton Avenue and Umatilla Street and Benton Ave. both in distance and angle. Monuments along Benton Street at the intersection of Walnut Street and Oak Streets were replaced at recovered position, done prior to paving. I find no other unusual conditions with this survey.

REFERENCE MATERIAL

- Survey Number 11-72
- Survey Number 45-73
- Survey Number 24-78
- Survey Number 46-78
- Survey Number 106-78
- Survey Number 41-80
- Survey Number 18-89 (1922 Monumentation)
- Survey Number 009-1994
- Survey Number 008-2008
- Survey Number 032-2015
- Plat of Riverside Addition Partition Plat 2021-0023

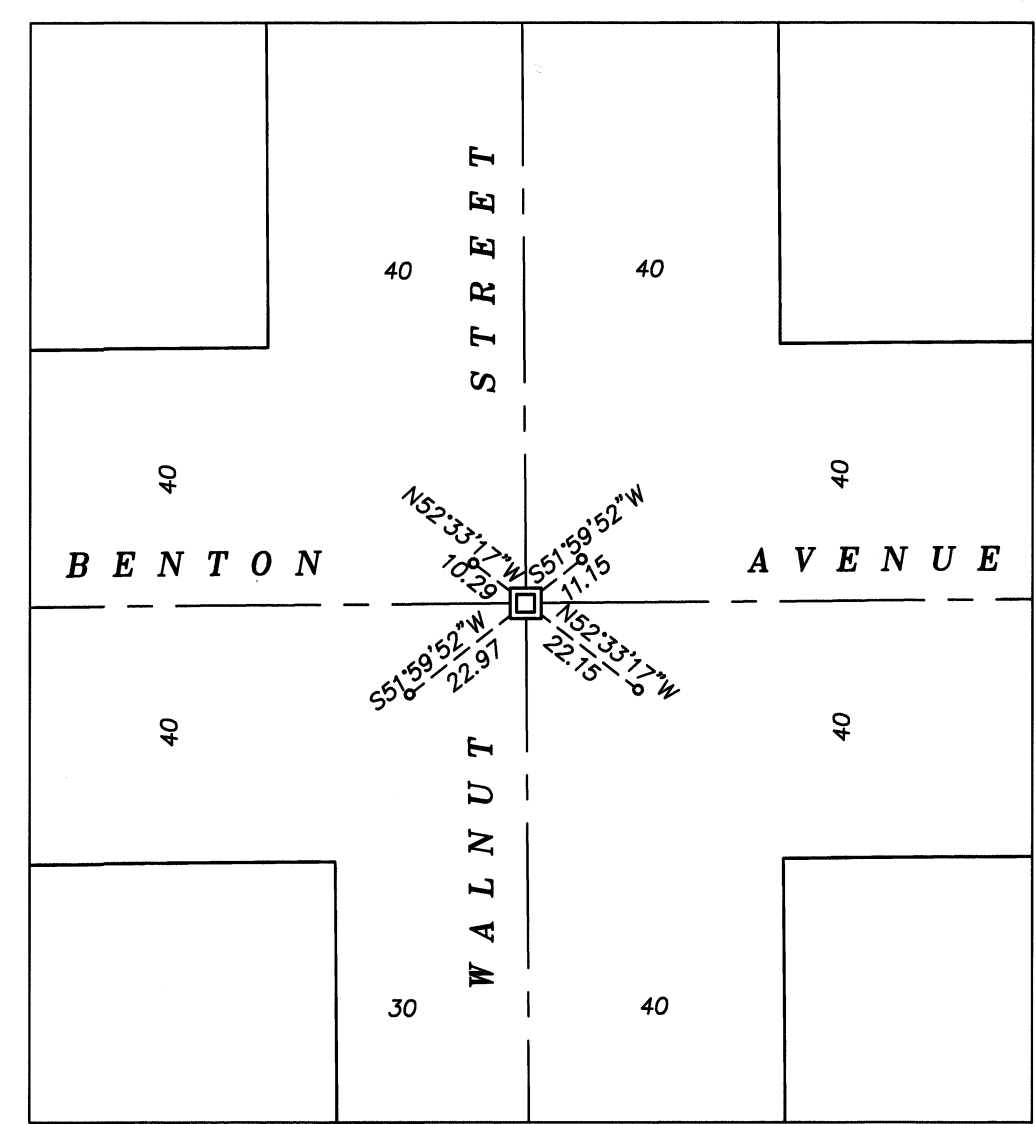
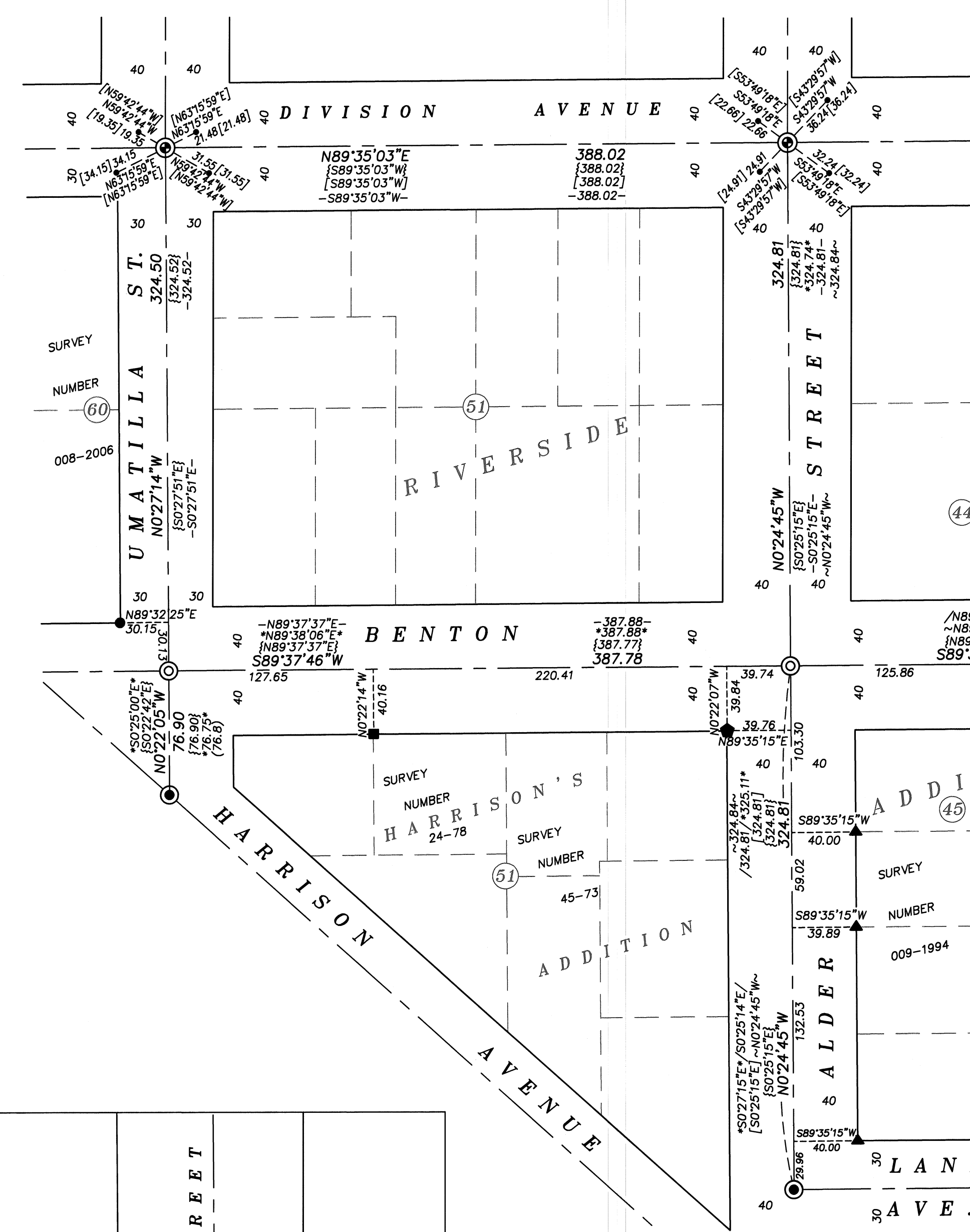
LEGEND

- Found brass plaque in water valve box set by Survey Number 106-78
- Found 2" brass plaque in concrete set by Survey Number 032-2015
- Found cotton spindle reference set by Survey Number 032-2015
- Found 5/8" iron pin set by Survey Number 45-73
- Found 5/8" iron pin with yellow plastic cap marked BGA SURVEY MARKER set by Survey Number 24-78
- Found 5/8" iron pin set by Survey Number 46-78
- Found 5/8" iron pin with yellow plastic cap marked BGB SURVEY MARKER set by Survey Number 009-1994
- Found 5/8" iron pin set by Survey Number 008-2006
- Found 5/8" iron pin with yellow plastic cap marked BGB SURVEY MARKER set by Partition Plat 2021-0023
- Found brass plaque in water valve box set by Survey Number 106-78, prior to paving, replaced with a 5/8" iron pin with 2" brass cap in collar of concrete.
- Set 5/8" iron pin with 2" brass cap flush with road surface in collar of concrete.
- Set cotton spindle as reference in asphalt
- Set lead plug with brass screw and brass washer marked OPLS 83571 as reference in curb
- Centerline
- Record measurement as per Survey Number 18-89 (1922 remonumentation of La Grange)
- Record measurement as per Survey Number 106-78
- Record measurement as per Survey Number 24-78
- Record measurement as per Survey Number 41-80
- Record measurement as per Survey Number 009-1994
- Record measurement as per Survey Number 032-2015
- Record measurement as per Partition Plat 2021-0023

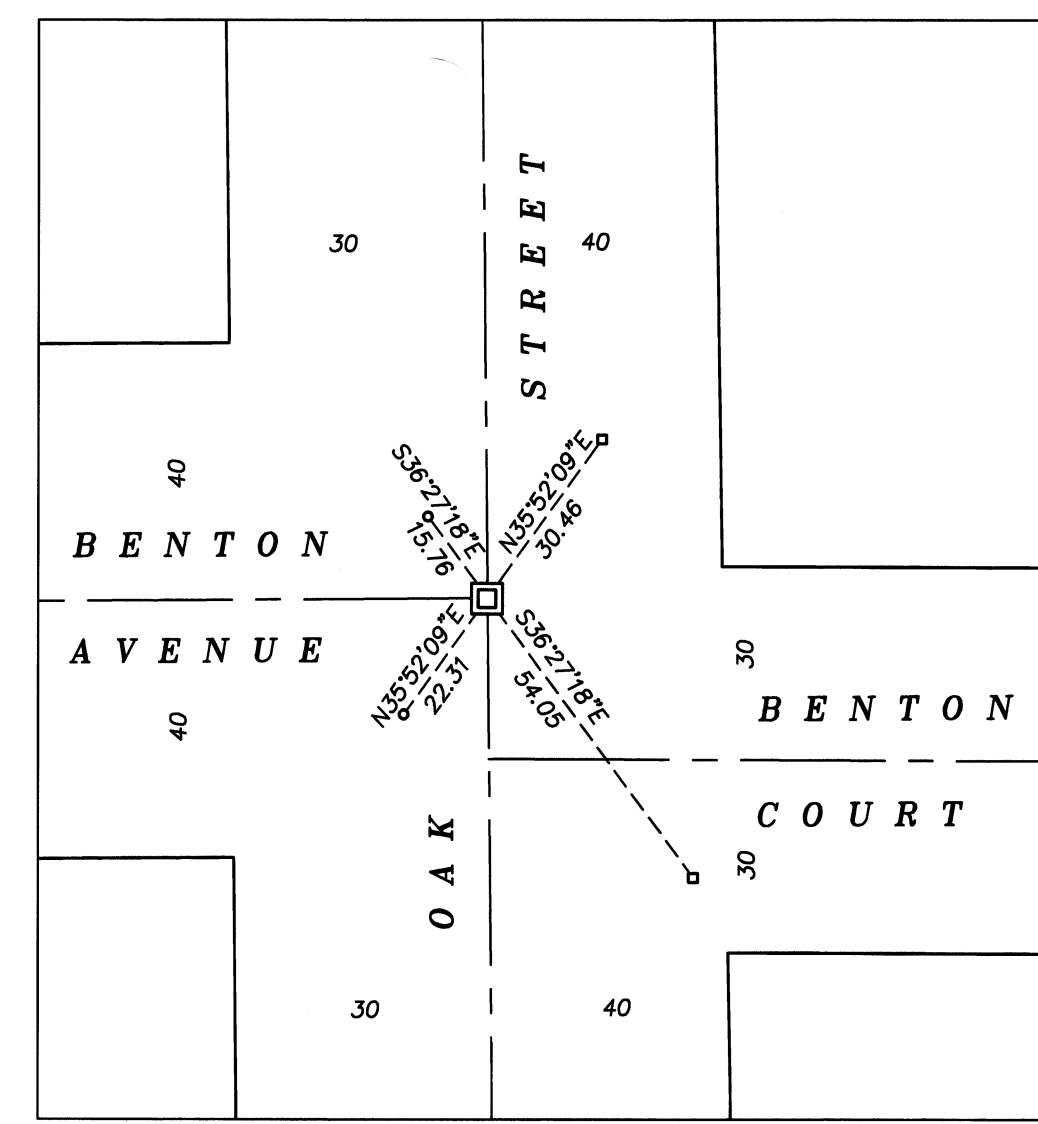
REGISTERED PROFESSIONAL LAND SURVEYOR

 OREGON
 JUNE 2, 2010
 JEFFREY S. HSU
 83571
 Renewal Date: June 30, 2025

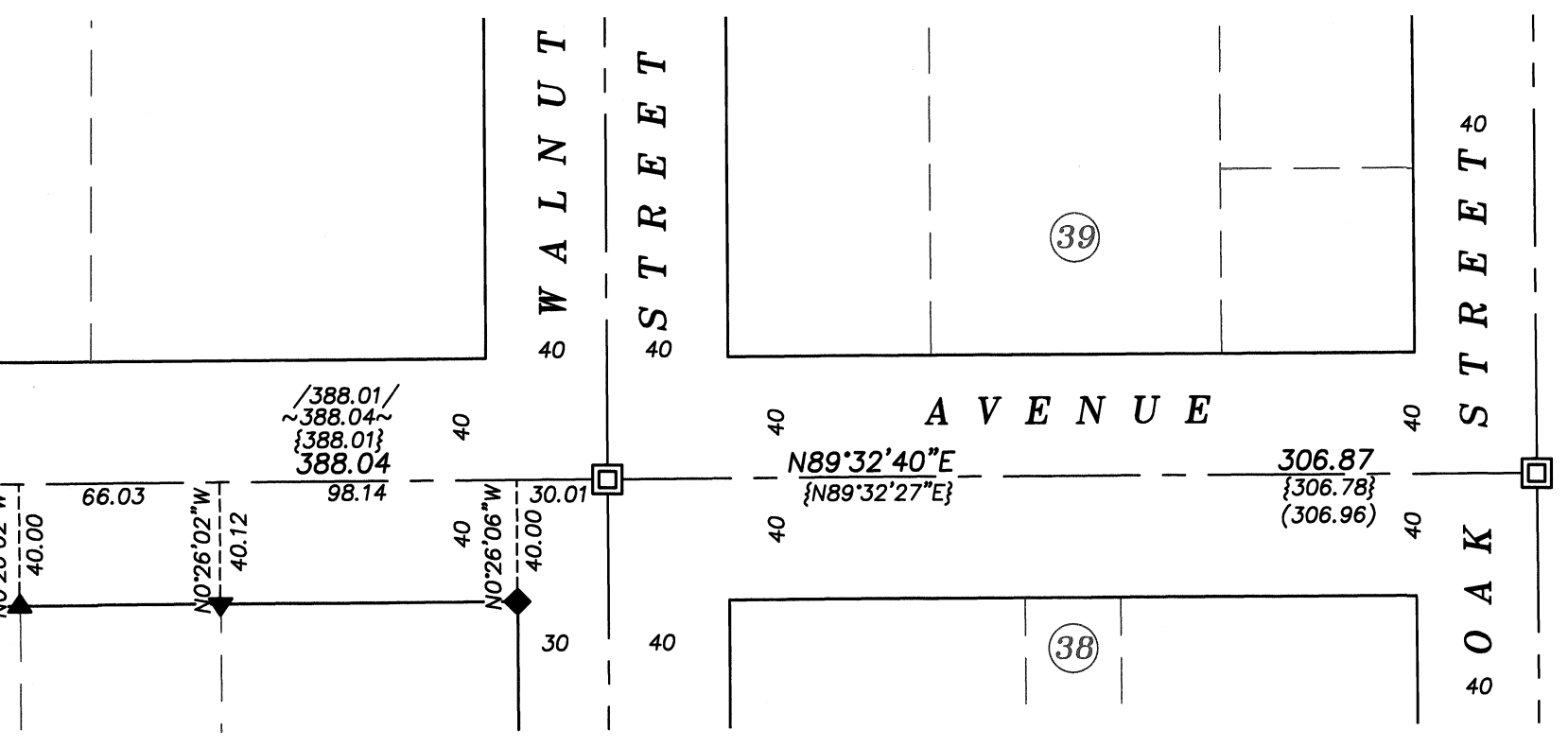
UNION COUNTY SURVEYOR
 Date Received 3/14/25
 Date Filed 3/14/25
 By
 File No. 005-2025



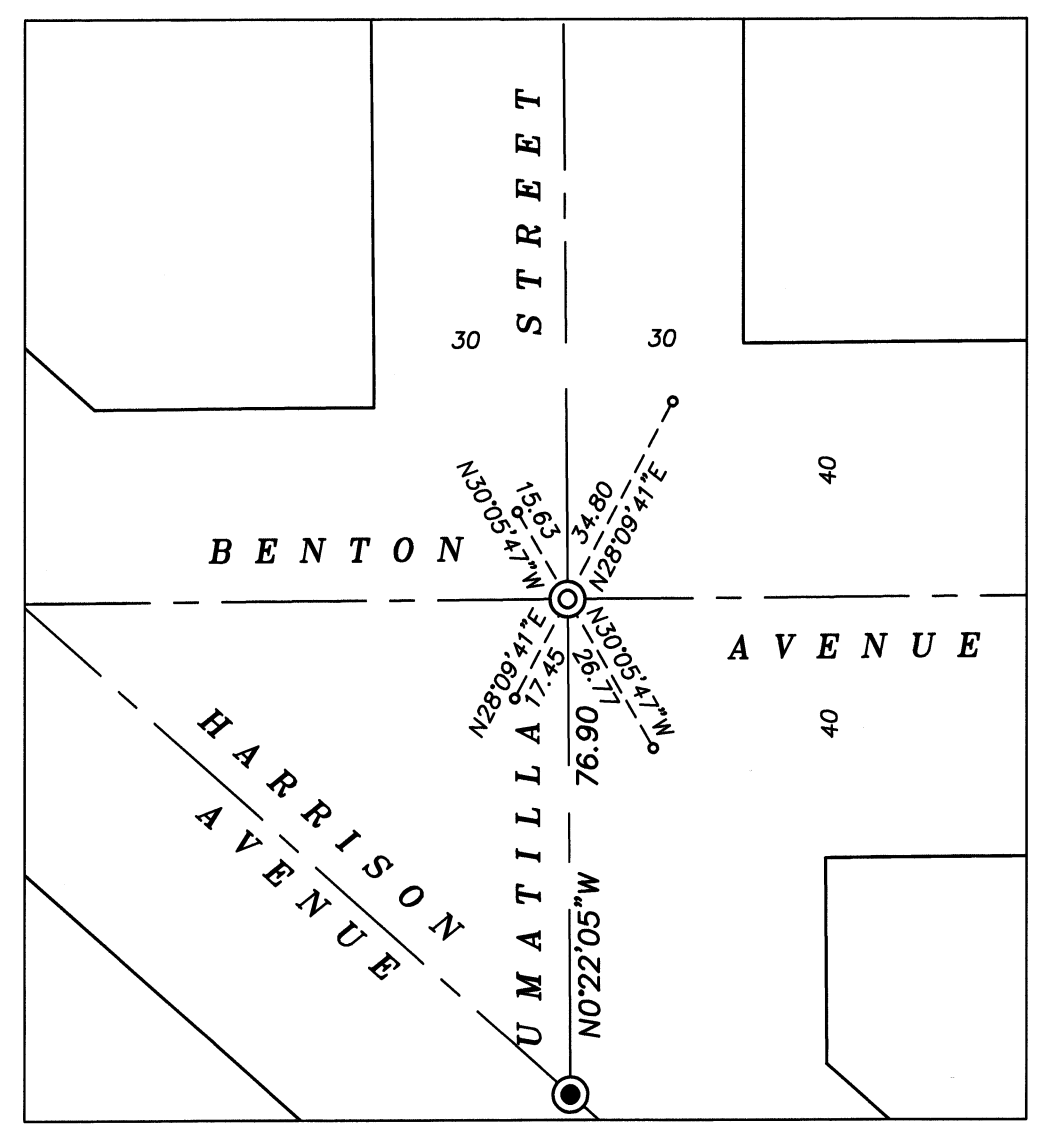
BENTON/WALNUT DETAIL
SCALE: 1"=30'



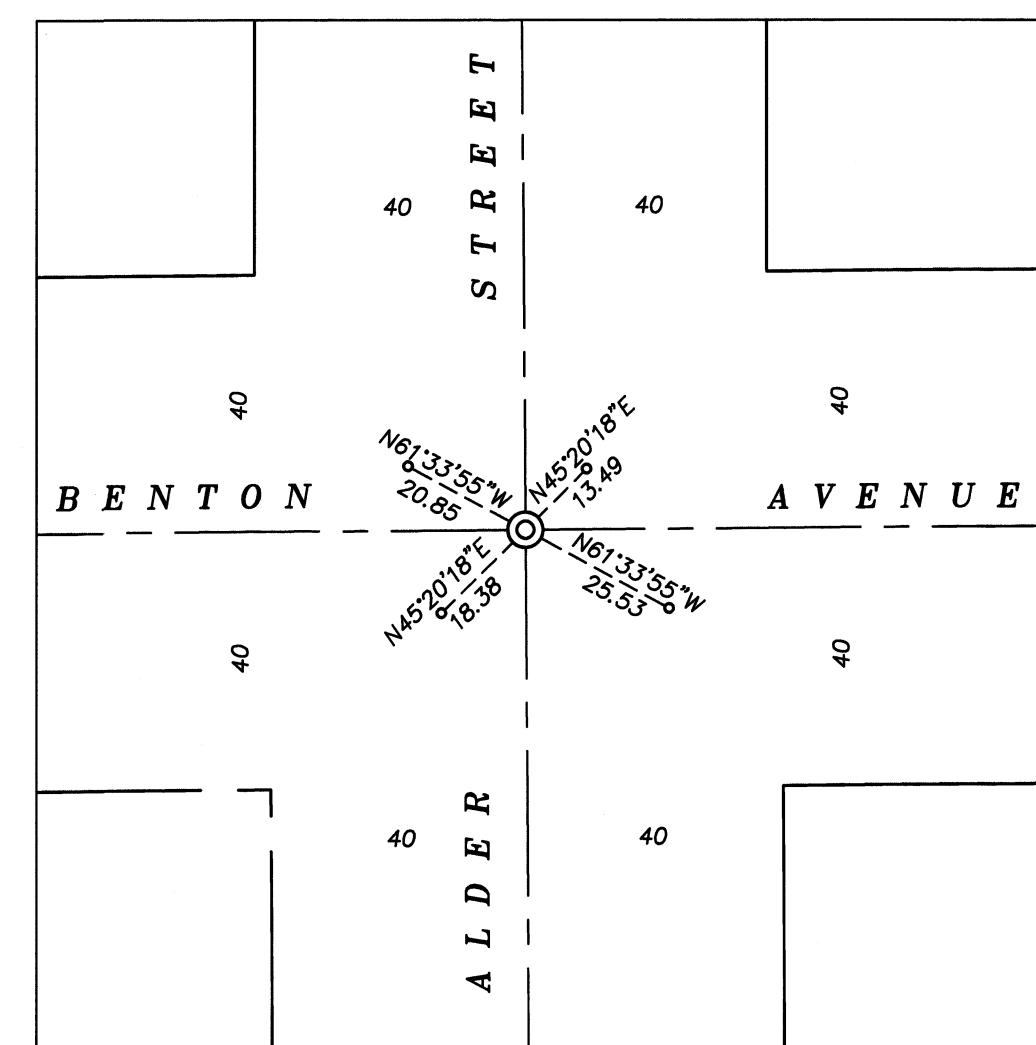
BENTON/OAK DETAIL
SCALE: 1"=30'



BENTON/WALNUT DETAIL
SCALE: 1"=30'



BENTON/UMATILLA DETAIL
SCALE: 1"=30'



BENTON/ALDER DETAIL
SCALE: 1"=30'

BAGETT, GRIFFITH & BLACKMAN 2006 Adams Avenue, LaGrange, Oregon Map of Survey Benton Ave. between Oak St. and Umatilla St. City of La Grange		
UNION COUNTY, OREGON		
SURVEYED FOR	City of La Grange	
SURVEYED BY	J. S. H.	3/24-2/25
Scale: 1" = 60'	Drawn by: J. S. H.	3/2025