

NARRATIVE

This survey was done at the request of Nate Conklin, owner of the land within. Mr. Conklin wanted the exteriors of the tract monumented. I base the block on the monuments set by Survey Number 63-73, which replaced several Mclain monuments set in the 1922 monumentation of La Grande. The centerline intersection positions along Fourth street were established by standard proportion, based on the 1922 survey, between the found monuments. I establish Jefferson St. centerline, by driving a line from the found monument at Jefferson and Depot to the proportioned intersection position at Jefferson and Fourth. The intersection of Chestnut and Jefferson was established by proportionate position based on the distances of the 1922 Mclain survey. I establish lot dimensions by standard proportion. I find monuments set by Survey 018-2012 to fit very well and also locate 2" iron pipes at the corners of the West line of lot 7, shown as iron pins by Survey 008-2015, Surveyed by H. L. Melton and dated December, 1947, filed by the County Surveyor in 2015. I find no other unusual conditions with this survey.

REFERENCE MATERIAL

- Survey Number 63-73
- Survey Number 13-88
- Survey Number 18-89
- Survey Number 012-1996
- Survey Number 037-2002
- Survey Number 004-2003
- Survey Number 003-2005
- Survey Number 026-2007
- Survey Number 018-2012
- Survey Number 046-2013
- Survey Number 009-2015

DEED REFERENCES

- Microfilm Document Number 20240028
- Microfilm Document Number 20104015

REGISTERED
PROFESSIONAL
LAND SURVEYOR

J.S.H.

OREGON
JUNE 2, 2010
JEFFREY S. HSU
83571

Renewal Date: June 30, 2025

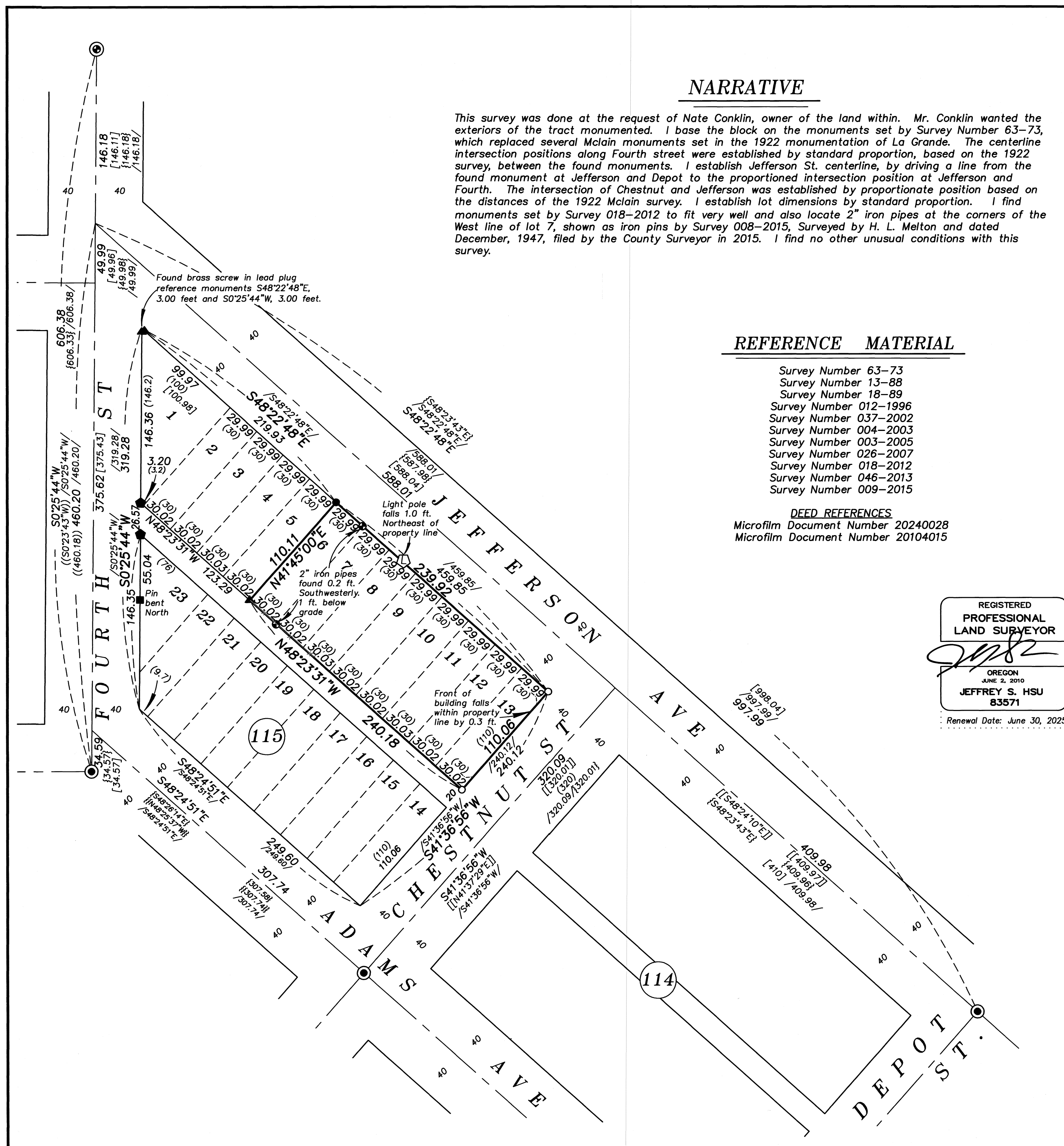
BASIS OF BEARING

Forward bearing as published by the U.S.C. and G.S. from Δ COLLEGE to Δ VALLEY Dated 1946.

SCALE: 1"=60'

LEGEND

- Found brass plaque in concrete set by Survey Number 63-73
- ⊙ Found brass screw in lead plug, set in concrete, set by Survey Number 18-89 (1922 monumentation)
- Found 2" iron pipe set by Survey Number 009-2015
- Found 5/8" iron pin set by Survey Number 004-2003, bent Northerly, tied at spin point
- Found 5/8" iron pin with yellow plastic cap marked BGB SURVEY MARKER set by Survey Number 018-2012
- ▲ Found lead plug with brass screw and washer marked OPLS 83571 set by Survey Number 018-2012
- ◆ Found 1 1/2" brass plaque with cross and punchmark set by Survey Number 046-2013
- Set lead plug with brass screw and washer marked OPLS 83571
- ⏏ Light pole
- () Record measurement as per Supplemental Plat of Chaplin's Addition
- [] Record measurement as per Survey Number 18-89 (1922 monumentation of La Grande)
- { } Record measurement as per Survey Number 63-73
- || } Record measurement as per Survey Number 13-88
- (()) Record measurement as per Survey Number 037-2002
- [[]] Record measurement as per Survey Number 026-2007
- / / Record measurement as per Survey Number 046-2013
- Centerline
- - - Building
- * - Fence (falls on or within property line)



UNION COUNTY
SURVEYOR

Date Received 11/5/24

Date Filed 11/5/24

By *J.S.H.*

File No. 040-2024

BAGETT, GRIFFITH & BLACKMAN
2006 Adams Avenue, LaGrande, Oregon
Map of Survey

Lots 6-13, Block 115,
Chaplin's Addition to La Grande

UNION COUNTY, OREGON

SURVEYED FOR	Nate Conklin
SURVEYED BY	J. S. H.
Scale: 1" = 60'	Drawn by: K. A. T. Oct. 2024