

# BASIS OF BEARING

True Geodetic North at the corner common to Sections 19, 20, 29 and 30, Township 1 South, Range 40 East of the Willamette Meridian, as determined by GPS observation

SCALE: 1"=500'

## LEGEND

- Found monument as described, marked as per Union County Monumentation Records
- ⊙ Set 2 1/2" x 30" aluminum pipe with 3" aluminum cap marked as per Union County Monumentation records, filed separately
- Set 5/8" x 30" iron pin with 2 1/2" aluminum cap, marked as per Union County Monumentation records, filed separately
- Set 5/8" x 30" iron pin with 1 1/2" yellow plastic cap, marked BGB SURVEY MARKER
- Set steel fence post on line
- ( ) Record measurement as per Field Notes for GLO Contract No. 103, executed by David Thompson, dated September 3rd, 1863
- ~ ~ Record measurement as per Field Notes for GLO Special Instructions, executed by John Kimbrell, dated June 16th, 1888
- { } Record Measurement as per Survey Number 050-2013
- / / Record measurement as per Survey Number 019-2023

## REFERENCE MATERIAL

Union County Monumentation Records  
 Survey Number 10  
 Survey Number 050-2013  
 Survey Number 016-2020  
 Survey Number 011-2023  
 Survey Number 019-2023

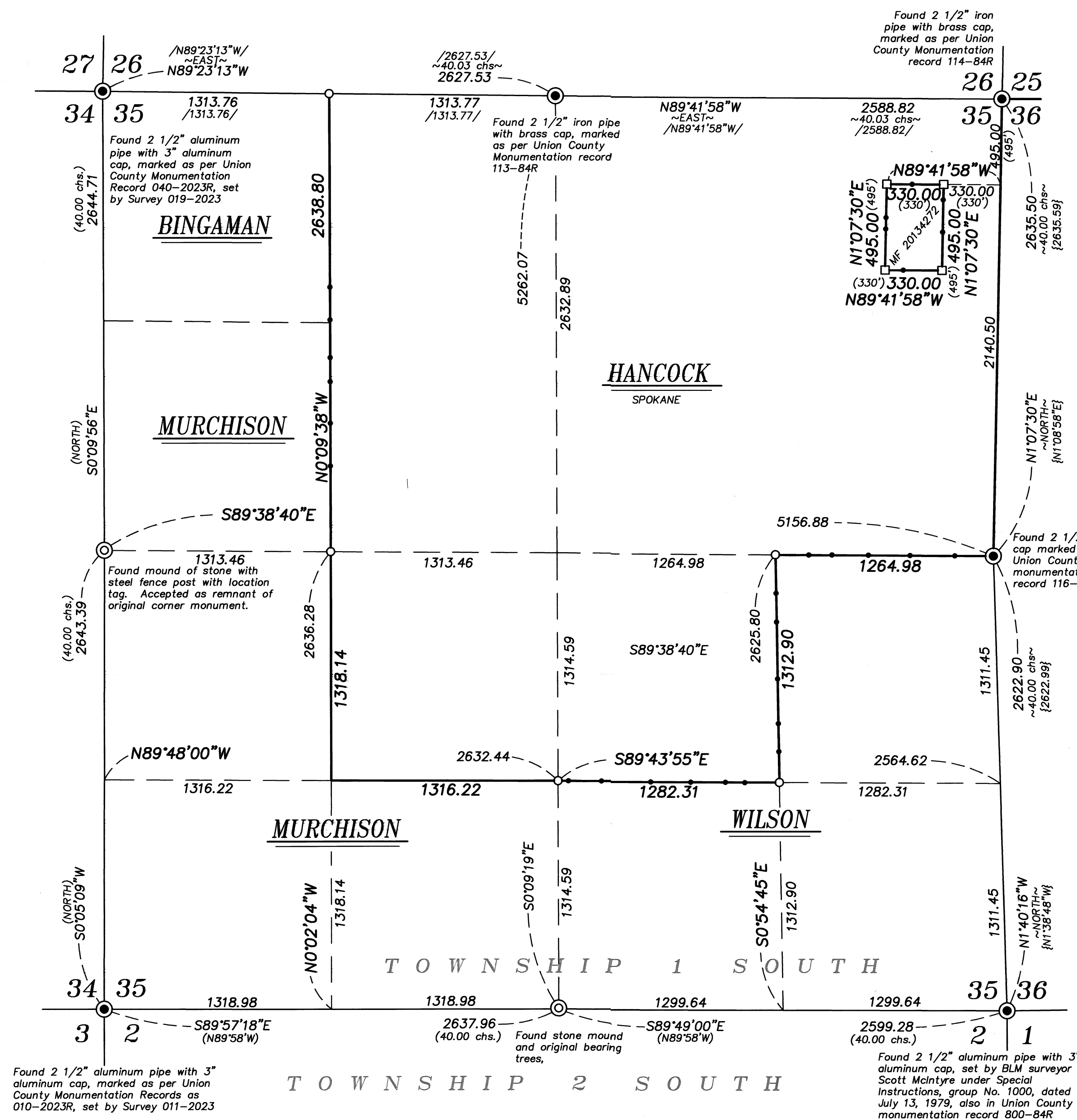
**DEED REFERENCES**  
 Microfilm Document Number 20143445  
 Microfilm Document Number 20130093  
 Microfilm Document Number 20203289  
 Microfilm Document Number 20074494  
 Microfilm Document Number 20043625  
 Microfilm Document Number 20134274  
 Microfilm Document Number 20134272

BLM Remonumentation Survey, under special instructions dated July 13, 1979, under Group Number 1000, executed by Scott McIntyre

Field Notes for GLO Contract No. 103, executed by David Thompson, dated September 3rd, 1863

Field Notes for GLO Special Instructions, executed by John Kimbrell, dated June 16th, 1888

Field Notes for GLO Contract No. 102, executed by Timothy Davenport, dated July 20th, 1863



Found 2 1/2" aluminum pipe with 3" aluminum cap, marked as per Union County Monumentation Records as 010-2023R, set by Survey 011-2023

Found 2 1/2" aluminum pipe with 3" aluminum cap, set by BLM surveyor Scott McIntyre under Special Instructions, group No. 1000, dated July 13, 1979, also in Union County monumentation record 800-84R

## NARRATIVE

This survey was done at the request of Todd Kurtz on behalf of Manulife, land manager for the land within. Mr. Kurtz wanted select monuments set and lines posted prior to logging. I recover monuments as shown. At the West quarter corner, I find a mound of stone, with a fence post with location tag dated 1974. Excavation of the mound of stone reveals a 3" square hole filled by loose dirt and roots. I accept this as the position of the original Post. At the South quarter corner, I find bearing tree stumps with scribes visible, and a stone mound with fence post and location tag. The bearings and distances from the trees do not intersect, but fall relatively close to the stone mound. I accept the stone mound as a remnant of the original corner. Subdivision of the section is as per BLM Manual of Instruction 2009. To place the corners of the Mt. Harris Lookout parcel (deed MF 20134272) in the Northeast quadrant, I run lines parallel with the North and East lines of the Northeast quarter of the Section. I find no other unusual conditions with this survey.

REGISTERED PROFESSIONAL LAND SURVEYOR

OREGON  
 JUNE 2, 2010  
 JEFFREY S. HSU  
 83571

Renewal Date: June 30, 2025

UNION COUNTY SURVEYOR

Date Received 8/19/24

Date Filed 8/19/24

By [Signature]

File No. 029-2024

BAGETT, GRIFFITH & BLACKMAN  
 2006 Adams Avenue, LaGrande, Oregon  
 Map of Survey

Situate in Section 35 Township 1 South, Range 39 East, of the Willamette Meridian

UNION COUNTY, OREGON	
SURVEYED FOR	Manulife
SURVEYED BY	J. S. H.
Scale: 1" = 600'	Drawn by: K. A. T. July-Aug. 2024