

BASIS OF BEARING

Forward bearing as published by the U.S.C. and G.S. from Δ COLLEGE to Δ VALLEY Dated 1946.

SCALE: 1"=600'

LEGEND

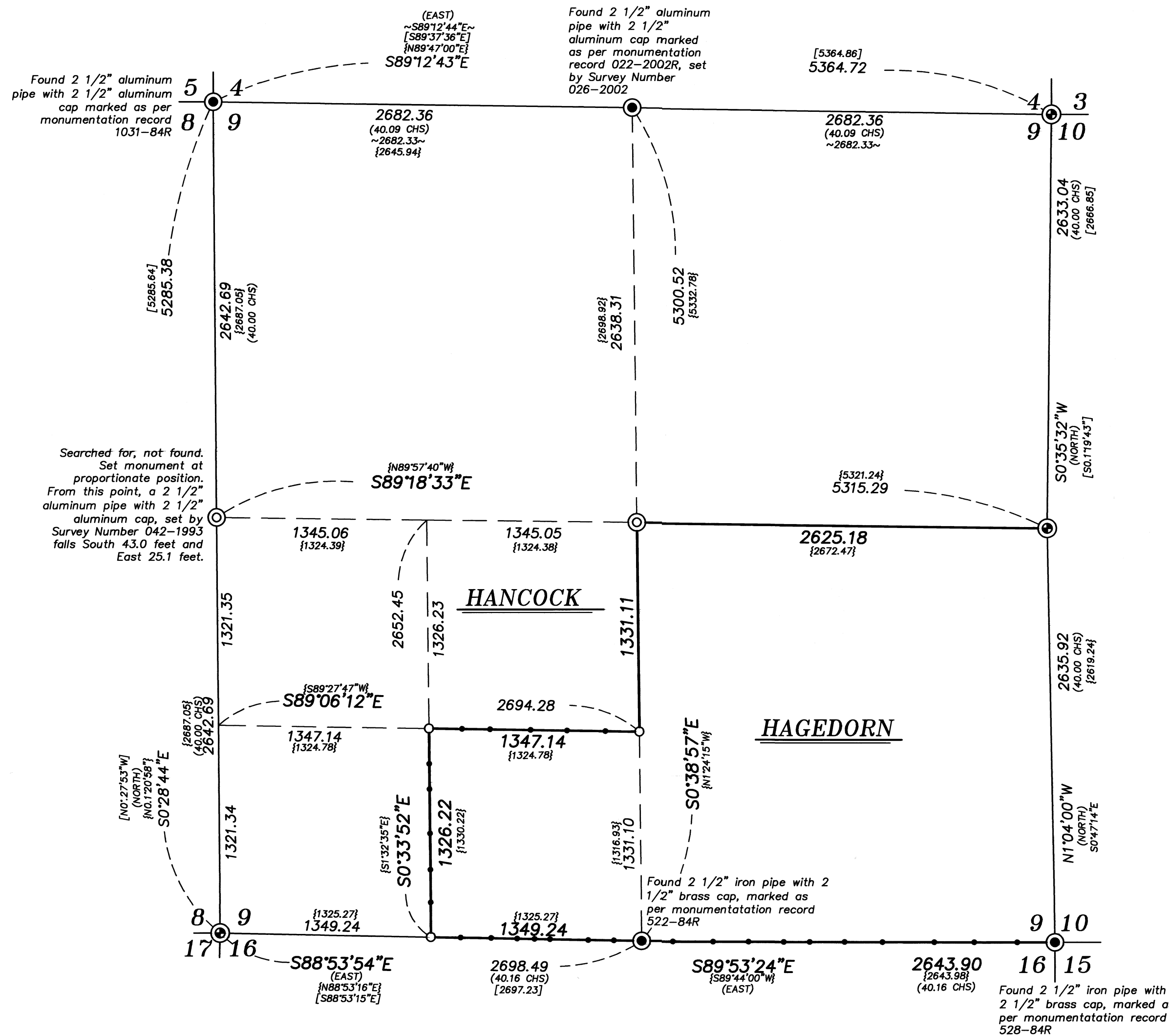
- Found monument as described, marked as per Union County Monumentation Records.
- ⊙ Found 2 1/2" aluminum pipe with 2 1/2" aluminum cap, set by survey number 037-1995, and marked as per Union County Monumentation Records.
- ⊙ Set 2 1/2"x30" aluminum pipe with 3" aluminum cap as per Union County Monumentation Records, filed separately.
- Set 5/8"x30" iron pin with 2 1/2" aluminum cap marked as per Union County Monumentation Records, filed separately.
- { } Record information as per Survey Number 042-1993
- [] Record information as per Survey Number 037-1995
- ~ ~ Record information as per Survey Number 026-2002
- () Record information as per GLO contract number 388 dated, May 7th 1881, executed by W. B. Barr
- Set steel fencepost on line

REFERENCE MATERIAL

Union County Monumentation Records
 Survey Number 042-1993
 Survey Number 037-1995
 Survey Number 026-2002

Field Notes from GLO Contract No. 388, dated May 7, 1881, executed by W.B. Barr

DEED REFERENCES
 Microfilm Document Number 20232739
 Microfilm Document Number 20122535
 Microfilm Document Number 20091988
 Microfilm Document Number 20046150



NARRATIVE

This survey was done at the request of George Hagedorn, owner of the land within. Mr. Hagedorn wanted to monument and post select portions of his property. I recover monuments as shown. Monuments set by Linda Miller in Survey Number 042-1993 were determined to be factually incorrect by Greg Blackman in Survey 037-1995 and therefore rejected. Most of the monuments from that survey appear to have been removed. I make a call to the ones that were not. I make a diligent search for the West quarter corner of Section 9, but do not find any remaining evidence of the original GLO corner. I place this at proportionate position. I find the East quarter corner to differ significantly in position from the record measurement of Survey 037-1995. Bearing trees indicate the monument to be in the same position as the found stone and I accept this monument in place. Record bearing and distance is likely a scrivener error on the 1995 Blackman survey. I subdivide the section as per BLM Manual of Instruction 2009. I find no other unusual conditions with this survey.

REGISTERED
 PROFESSIONAL
 LAND SURVEYOR

Jeffrey S. HSU

OREGON
 JUNE 2, 2010
 JEFFREY S. HSU
 83571

Renewal Date: June 30, 2025

UNION COUNTY
 SURVEYOR

Date Received 8/19/24

Date Filed 8/19/24

By *JK*

File No. 028-2024

BAGETT, GRIFFITH & BLACKMAN 2006 Adams Avenue, LaGrande, Oregon Map of Survey	
Situated in Section 9, Township 4 South, Range 38 East of the Willamette Meridian	
UNION COUNTY, OREGON	
SURVEYED FOR	George Hagedorn
SURVEYED BY	J. S. H.
Scale: 1" = 600'	Drawn by: K. A. T. August 2024

SURVEY NUMBER 028-2024