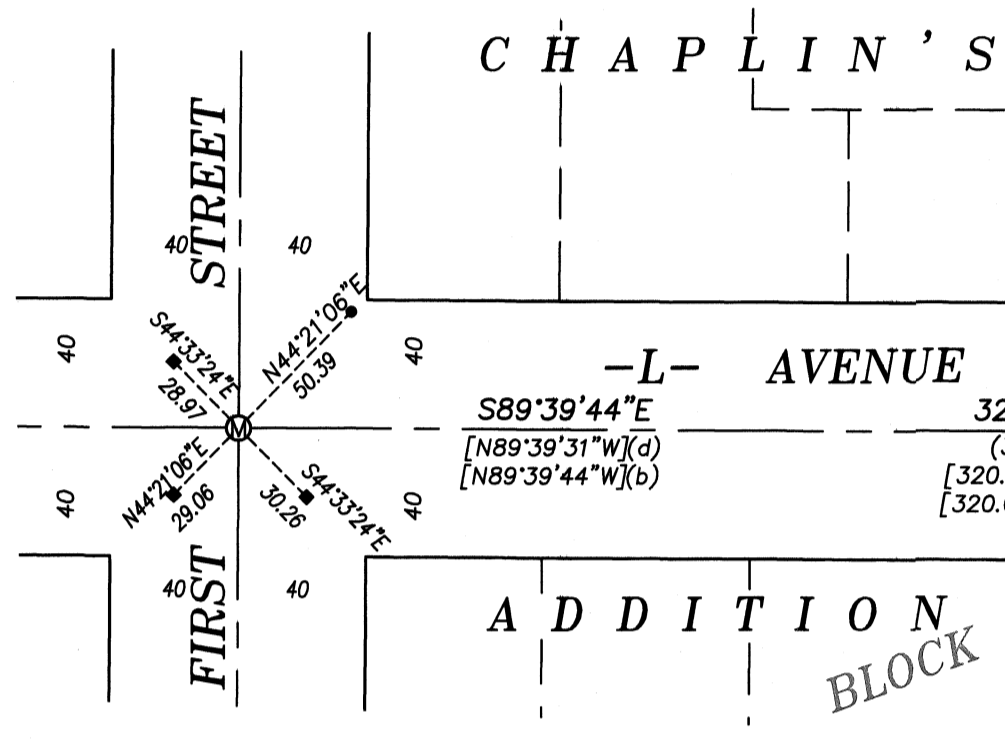


BASIS OF BEARING

Forward bearing as published by the U.S.C. and G.S. from Δ COLLEGE to Δ VALLEY Dated 1946.

SCALE: 1" = 60'



LEGEND

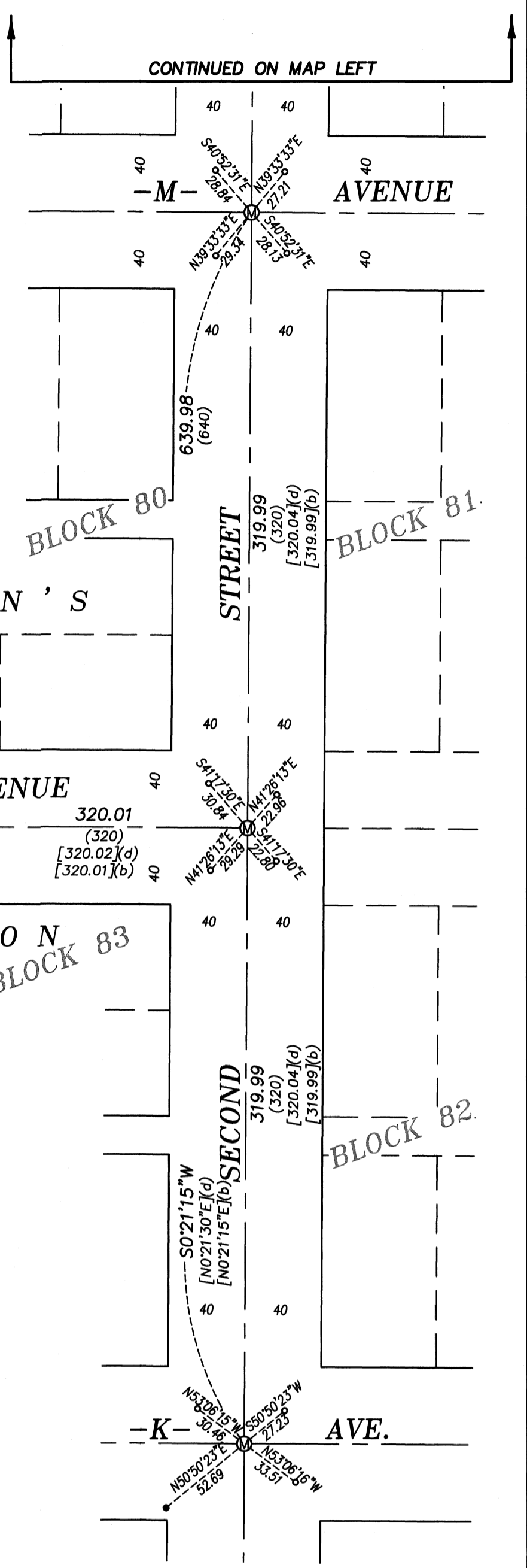
- Found 2" brass cap in concrete marked BAGETT, GRIFFITH AND BLACKMAN
- Found brass screw in lead plug with brass washer marked OPLS 2219, set by Survey Number 008-2012
- Found brass screw in lead plug with brass washer marked OPLS 2219, set by Survey Number 014-2013
- ◆ Found brass screw in lead plug, set by Survey Number 18-89 (1922 monumentation of La Grande)
- Set brass screw in lead plug reference monument with washer marked OPLS 83571
- ⊙ Manhole
- () Record measurement as per Survey Number 18-89 (1922 monumentation of La Grande)
- [(x) Record measurement as per survey as noted in reference materials

REFERENCE MATERIAL

- (a) Survey Number 7-86
 - (b) Survey Number 006-2014
 - (c) Survey Number 059-2015
 - (d) Survey Number 9-80
 - (e) Survey Number 68-79
 - (f) Survey Number 014-2013
- Survey Number 18-89 (1922 Monumentation of La Grande)
Plat of Chaplin's Addition

NARRATIVE

This survey was done at the request of Kyle Carpenter, Public Works Director for the City of La Grande. Mr. Carpenter wanted the centerline intersection monuments along Second St. monumented following a street reconstruction project. To place these intersection monuments, I use lead plug reference ties, acquired in Spring of 2023 and set by the surveys shown in the reference materials. The intersection of L Ave. and Second St. had no reference monuments. I place said intersection by proportionate measurement, as per survey 006-2014. Doing so is harmonious with the intersection of L Ave. and First St. I find no other unusual conditions with this survey.



REGISTERED
PROFESSIONAL
LAND SURVEYOR

OREGON
JUNE 2, 2010
JEFFREY S. HSU
83571
Renewal Date: June 30, 2025

UNION COUNTY
SURVEYOR

Date Received 2/16/24

Date Filed 2/16/24

By

File No. 008-2024

BAGETT, GRIFFITH & BLACKMAN
2006 Adams Avenue, LaGrande, Oregon
Map of Survey
Monumentation of centerline intersections along 2nd Street between Penn Ave. and K Ave., City of La Grande, UNION COUNTY, OREGON

SURVEYED FOR	City of La Grande
SURVEYED BY	J. S. H.
Scale: 1" = 60'	Drawn by: K. A. T. Feb. 2024