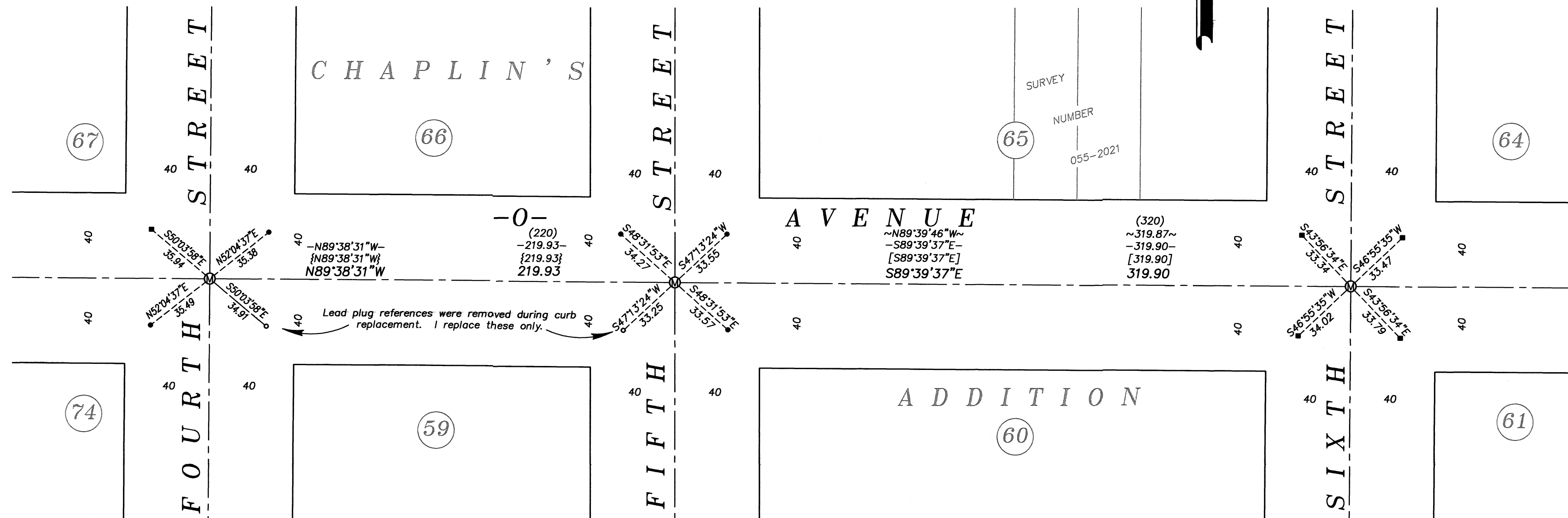


# BASIS OF BEARING

Forward bearing as published by the U.S.C.  
and G.S. from  $\Delta$  COLLEGE to  $\Delta$  VALLEY  
Dated 1946.

SCALE: 1" = 40'



## LEGEND

- Found lead plug references set by Survey Number 18-89 (1922 monumentation)
- Found brass screw with washer marked OPLS 83571
- Set brass screw in lead plug for reference, with brass washer marked OPLS 83571
- ~ ~ Record measurement as per Survey 70-80
- ( ) Record measurement as per Survey Number 18-89 (1922 monumentation)
- [ ] Record measurement as per Survey Number 005-2014
- { } Record measurement as per Survey Number 003-2019
- - Record measurement as per Survey Number 055-2021
- ⊙ Manhole
- - - - Centerline

## REFERENCE MATERIAL

Survey Number 70-80  
Survey Number 18-89  
(1922 monumentation of La Grande)  
Survey Number 005-2014  
Survey Number 003-2019  
Survey Number 055-2021

## NARRATIVE

This survey was done at the request of Kyle Carpenter, on behalf of the City of La Grande. Mr. Carpenter wanted centerline monuments set following an asphalt overlay project. The intersections were established from found lead plug references and have sewer manholes at the true intersection point. I find only two references removed by curb replacement and replace them. I find no other unusual conditions with this survey.

UNION COUNTY SURVEYOR	
Date Received	2/14/24
Date Filed	2/14/24
By	<i>[Signature]</i>
File No.	006-2024

REGISTERED  
PROFESSIONAL  
LAND SURVEYOR

*[Signature]*

OREGON  
JUNE 2, 2010  
JEFFREY S. HSU  
83571

Renewal Date: June 30, 2025

<b>BAGETT, GRIFFITH &amp; BLACKMAN</b>	
2006 Adams Avenue, LaGrande, Oregon	
Map of Survey	
Monumentation of centerline intersections along O Avenue, 4th Street to 6th Street City of La Grande	
UNION COUNTY, OREGON	
SURVEYED FOR	City of La Grande
SURVEYED BY	J. S. H.
Scale: 1" = 40'	Drawn by: J. S. H. Feb. 2024

SURVEY NUMBER 006-2024