

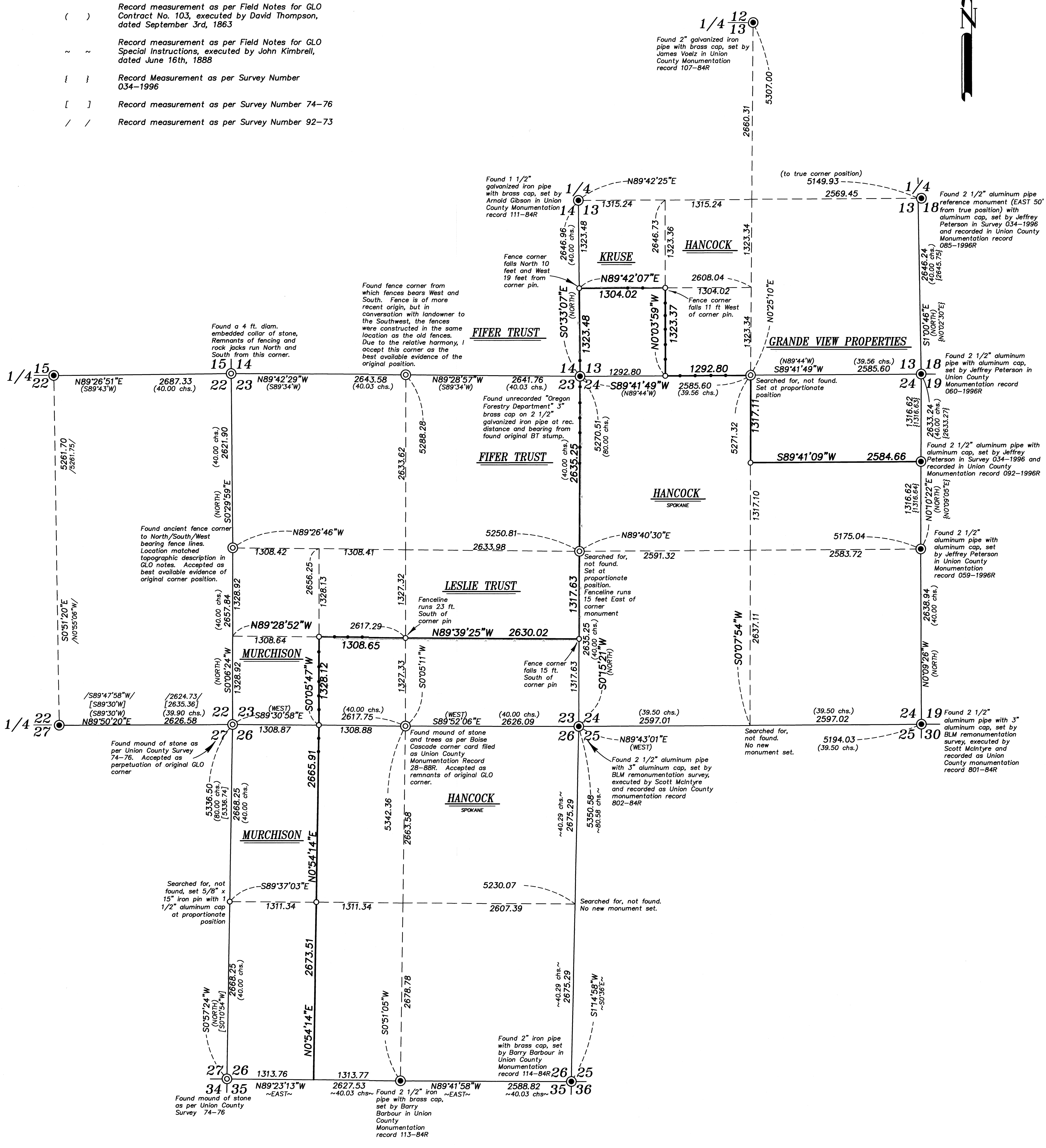
LEGEND

- Found monument as described, as per Union County Monumentation Records
- ⊙ Set 2 1/2" x 30" aluminum pipe with 3" aluminum cap marked as per Union County Monumentation records, filed separately
- Set 5/8" x 30" iron pin with 2 1/2" aluminum cap, unless otherwise noted, marked as per Union County Monumentation records, filed separately
- Set steel fence post on line
- Fenceline
- () Record measurement as per Field Notes for GLO Contract No. 103, executed by David Thompson, dated September 3rd, 1863
- ~ ~ Record measurement as per Field Notes for GLO Special Instructions, executed by John Kimbrell, dated June 16th, 1888
- { } Record Measurement as per Survey Number 034-1996
- [] Record measurement as per Survey Number 74-76
- / / Record measurement as per Survey Number 92-73

BASIS OF BEARING

True Geodetic North at the corner common to Sections 19, 20, 29 and 30, Township 1 South, Range 40 East of the Willamette Meridian, as determined by GPS observation

SCALE: 1"=800'



NARRATIVE

This survey was done at the request of Todd Kurtz on behalf of Manulife, land manager for the land within. Mr. Kurtz wanted select monuments set and lines posted prior to logging. I recover monuments as shown. At the Northwest and Southwest corners of Section 26, I find embedded mounds of stone, as described in Survey 74-76. I find measurements relatively harmonious with said survey. At the North quarter corner of Section 23, I find a prominent fence corner from which fences bears West and South. Though the fence is of a more recent construction, landowner Murchison attests that the fence was reconstructed in the same spot. The position is harmonious with the section corner to the East and I hold this as the best available evidence of the original GLO corner position.

At the NW corner of Section 23 I find remnants of a North/South running fence. Though there is evidence of rock jacks along this fenceline, a particularly embedded mound of stone falls in line with the rock jack remains. The position to the quarter corners East and West are quite harmonious with GLO distances and I accept this as the original corner.

At the West quarter corner position of Section 23, I find a fence corner that is both harmonious with record distances to the section corners North and South, and matches the topographic description in the original GLO field notes. I accept this as a perpetuation of the original corner monument.

The quarter corner between Sections 23 and 26 have a history of recovery, as per Boise corner cards filed with the Union County monumentation records. A very prominent mound of stone falls in this location and was accepted as a perpetuation of the original corner monument.

There is an unrecorded brass cap at the Northeast corner of Section 23. This cap is verified with an existing GLO bearing stump and accepted in place.

All other monuments not found I reset at proportionate position. Subdivision of sections is as per BLM Manual of Instructions 2009. I find no unusual conditions with this survey.

REFERENCE MATERIAL

- Union County Monumentation Records
 - Survey 022-1998
 - Survey 034-1996
 - Survey Number 74-76
 - Survey Number 92-73
 - Survey Number 10
- BLM Remonumentation Survey, under special instructions dated July 13, 1979, under Group Number 1000, executed by Scott McIntyre
- Field Notes for GLO Contract No. 103, executed by David Thompson, dated September 3rd, 1863
- Field Notes for GLO Special Instructions, executed by John Kimbrell, dated June 16th, 1888
- DEED REFERENCES
 - Microfilm Document Number 20143445
 - Microfilm Document Number 20130093
 - Microfilm Document Number 20203289
 - Microfilm Document Number 20074494
 - Microfilm Document Number 20043625
 - Microfilm Document Number 20134274
 - Microfilm Document Number 20134272

REGISTERED PROFESSIONAL LAND SURVEYOR
 JEFFREY S. HSU
 83571
 Renewal Date: June 30, 2025

UNION COUNTY SURVEYOR
 Date Received 9/5/23
 Date Filed 9/5/23
 By [Signature]
 File No. 019-2023

BAGETT, GRIFFITH & BLACKMAN
 2006 Adams Avenue, LaGrande, Oregon
 Map of Survey
 Situate in Sections 13, 22, 23, 24, and 26, Township 1 South, Range 39 East, of the Willamette Meridian
 UNION COUNTY, OREGON
 SURVEYED FOR Manulife Investments
 SURVEYED BY J. S. H.
 Scale: 1" = 800' Drawn by: K. A. T. July-Aug. 2023