

BASIS OF BEARING

True Geodetic North at the corner to Sections 19, 20, 29 and 30, Township 1 South, Range 40 East, of the Willamette Meridian, as determined by GPS observation.

SCALE: 1"=200'

LEGEND

- ⊙ Found 2 1/2" iron pipe with 2 1/2" brass cap, marked as per Union County Monumentation Records, set by Survey Number 32-80
- ⊙ Set 5/8" x 30" iron pin with 2 1/2" aluminum cap, marked as per Union County Monumentation Records, filed separately
- < > Record measurement as per Survey Number 32-80
- - Record measurement as per Survey Number 04-88
- () Record measurement as per field notes of GLO Contract No. 450, executed by Henry Meldrum, dated June 11, 1882
- [] Record measurement as per field notes of GLO Contract No. 683, executed by Alonzo Gesner, dated June 7, 1898

REFERENCE MATERIAL

Union County Monumentation Records
 Partition Plat 2013-0001T
 Survey Number 32-80
 Survey Number 04-88

Field notes of GLO contract number 450,
 executed by Henry Meldrum, dated June 11, 1882

Field notes of GLO contract number 683,
 executed by Alonzo Gesner, dated June 7, 1898

DEED REFERENCES
 Microfilm Document Number 20134269
 Microfilm Document Number 20134272

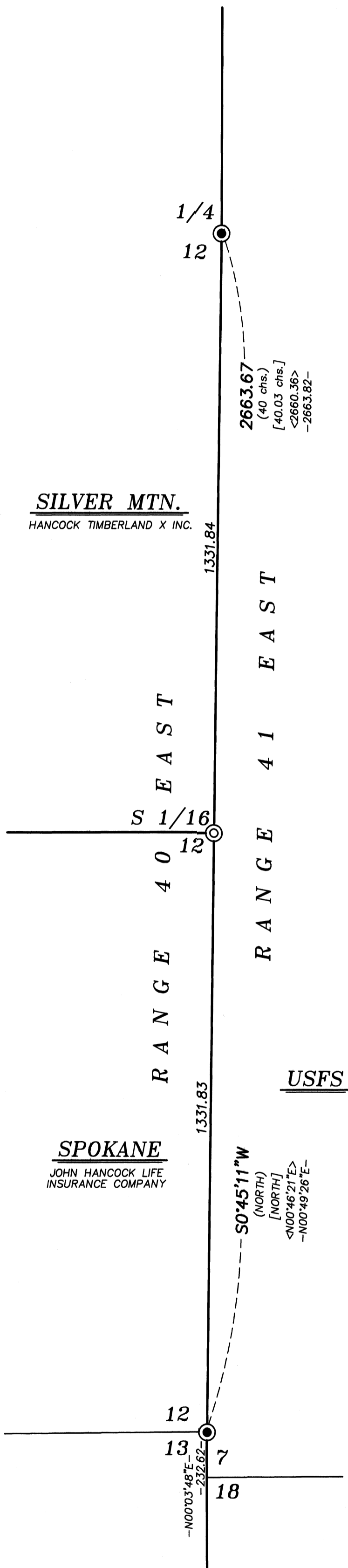
NARRATIVE

This survey was done at the request of Todd Kurtz, manager of the land shown. Mr. Kurtz wanted the corner set in preparation for a timber harvest. I recover the monuments as shown hereon. I accept the location of monuments as found on the ground. The East line of Section 12, Range 40 East is senior to the West line of Section 7, Range 41 East. I place the sixteenth as per BLM Manual of Instruction 2009. I find no other unusual conditions with this survey.

REGISTERED
 PROFESSIONAL
 LAND SURVEYOR

OREGON
 JUNE 2, 2010
 JEFFREY S. HSU
 83571

Renewal Date: June 30, 2023.



UNION COUNTY SURVEYOR

Date Received 6/7/22

Date Filed 6/7/22

By [Signature]

File No. 018-2022

BAGETT, GRIFFITH & BLACKMAN
 2006 Adams Avenue, LaGrande, Oregon
 Map of Survey

Situate in Section 12, Township 1 South, Range 40 East of the Willamette Meridian

UNION COUNTY, OREGON

SURVEYED FOR	Manulife Property Investments
SURVEYED BY	J. S. H.
Scale: 1"=200'	Drawn by: K. A. T. May 2022

SURVEY NUMBER 018-2022