

**REFERENCE MATERIAL**

Union County Monumentation Records  
 Survey Number 111-78  
 Survey Number 31-81  
 Survey Number 7-88  
 Survey Number 025-1998  
 Survey Number 033-2004  
 Survey Number 060-2015

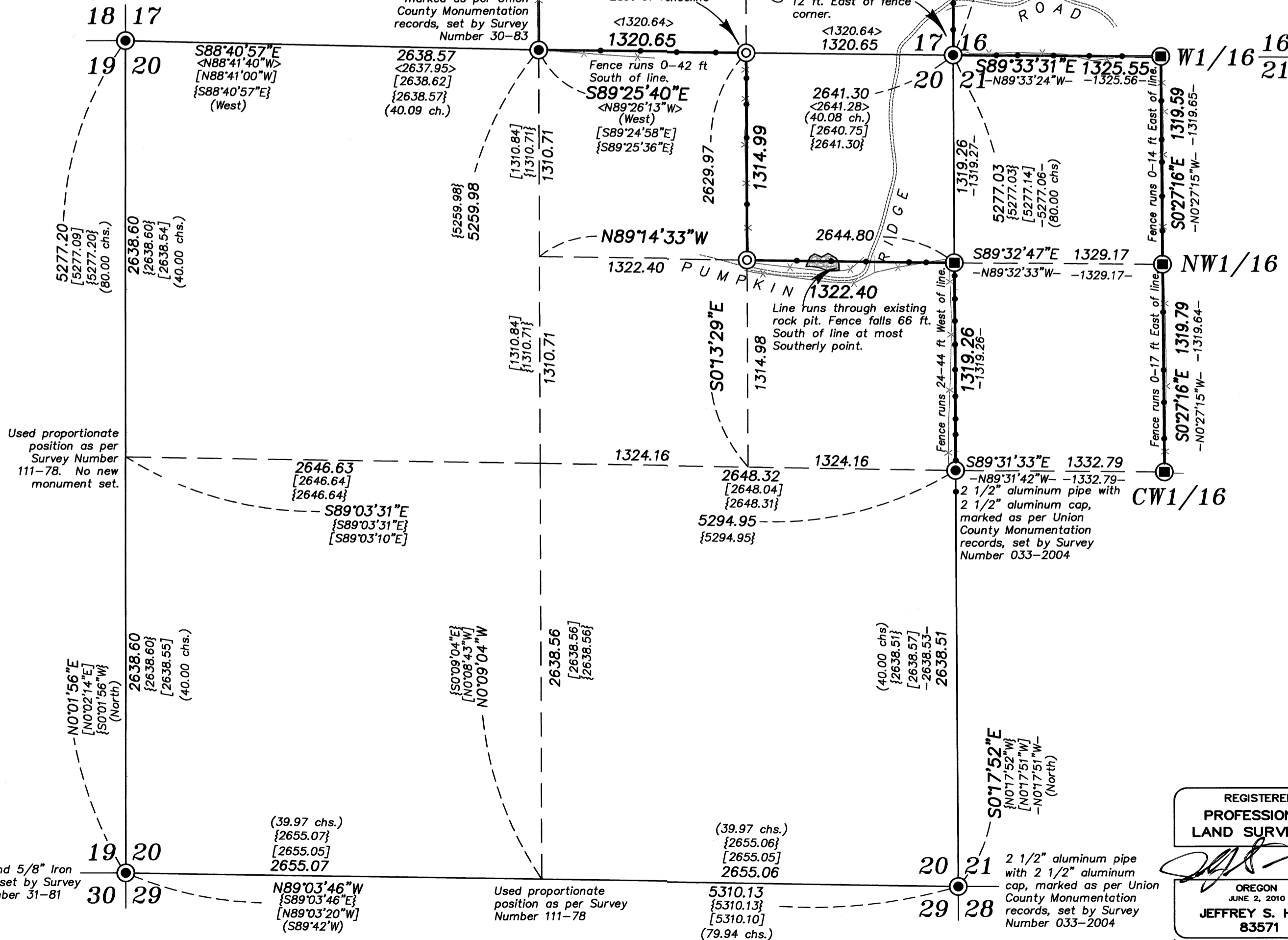
**DEED REFERENCES**

Book 129, Page 106  
 Microfilm Document Number 135165  
 Microfilm Document Number 20045918  
 Microfilm Document Number 20134273

Field Notes of GLO Contract No. 120, Dated May 27, 1867,  
 executed by Joseph Gray and Willaim Odell

2 1/2" iron pipe with 2 1/2" brass  
 cap, marked as per Union County  
 Monumentation records, set by  
 Survey Number 111-78

2 1/2" iron pipe with  
 2 1/2" brass cap,  
 marked as per Union  
 County Monumentation  
 records, set by Survey  
 Number 30-83



**BASIS OF BEARING**

Solar observation taken at the North quarter  
 corner of Section 15, Township 1 North,  
 Range 39 East of the Willamette Meridian.

**SCALE: 1"=600'**

**LEGEND**

- Found monument as described, marked as per Union County Monumentation Records
- ⊙ Found 2 1/2" aluminum pipe with 2 1/2" aluminum cap set by Survey 025-1998 marked as per Union County Monumentation Records
- ⊙ Found 2 1/2" aluminum pipe with 2 1/2" aluminum cap set by Survey 033-2004 marked as per Union County Monumentation Records
- ⊙ Set 5/8" x 30" iron pin with 2 1/2" aluminum cap marked as per Union County Monumentation Record, filed separately
- ( ) Record measurement as per field notes of GLO contract No. 120, Dated May 27, 1867, executed by Joseph Gray and Willaim Odell
- [ ] Record measurement as per Survey Number 111-78
- < > Record measurement as per Survey Number 025-1998
- - Record measurement as per Survey Number 033-2004
- { } Record measurement as per Survey Number 060-2015
- - - - - Fenceline
- Steel fencepost set on line
- Found steel fencepost on line

**NARRATIVE**

This survey was done at the request of Todd Kurtz on behalf of Manulife Forest Management, land manager of the lands within. Mr. Kurtz wanted the exteriors of the ownership monumented and lines posted in preparation for a timber sale. I recover the monuments as shown hereon and hold their position as found. At the SE 1/16th corner of Section 17, I find the witness corner to be slightly less than the record 5.00 feet to a line drawn between the S1/16 and the CS1/16th. To place this corner I hold the witness corner position, and drive a line from the E1/16th corner on the South line of the Section through this monument to the aforementioned line. All other recovered monuments are harmonious with record position with exception of the Center-East 1/16th of Section 17. Bearing trees indicate that this is the position that the monument was originally set, and due to the its long standing existence, I hold the monument position. I place the South and West quarter corners of Section 20 by proportionate position, as was done in Survey Number 111-78 and Survey Number 060-2015. I subdivide Section 20 as per BLM Manual of Instruction 2009. Fencelines are off as shown. I find no other unusual conditions with this survey.

REGISTERED  
 PROFESSIONAL  
 LAND SURVEYOR

OREGON  
 JUNE 2, 2010  
 JEFFREY S. HSU  
 83571

Renewal Date: June 30, 2023

UNION COUNTY  
 SURVEYOR

Date Received 6/2/22

Date Filed 6/2/22

By [Signature]

File No. 013-2022

**BAGETT, GRIFFITH & BLACKMAN**  
 2006 Adams Avenue, LaGrande, Oregon

Map of Survey  
 Situate in Sections 17, 20, and 21,  
 Township 1 North, Range 39 East of the  
 Willamette Meridian

UNION COUNTY, OREGON	
SURVEYED FOR	Manulife Forest Management
SURVEYED BY	J. S. H.
Scale: 1" = 600'	Drawn by: K. A. T. April 2022