

**REFERENCE MATERIAL**

Plat of Hindman's Addition  
 Survey Number 20-62  
 Survey Number 32-69  
 Survey Number 01-67  
 Survey Number 34-76  
 Survey Number 17-77

**DEED REFERENCES**  
 Book 96, Page 354  
 Microfilm Document Number 25223  
 Microfilm Document Number 31668  
 Microfilm Document Number 57857  
 Microfilm Document Number 149426  
 Microfilm Document Number 161994  
 Microfilm Document Number 20201365  
 Microfilm Document Number 20214582

**BASIS OF BEARING**

Solar observation taken at the North quarter corner of Section 15, Township 1 North, Range 39 East of the Willamette Meridian.

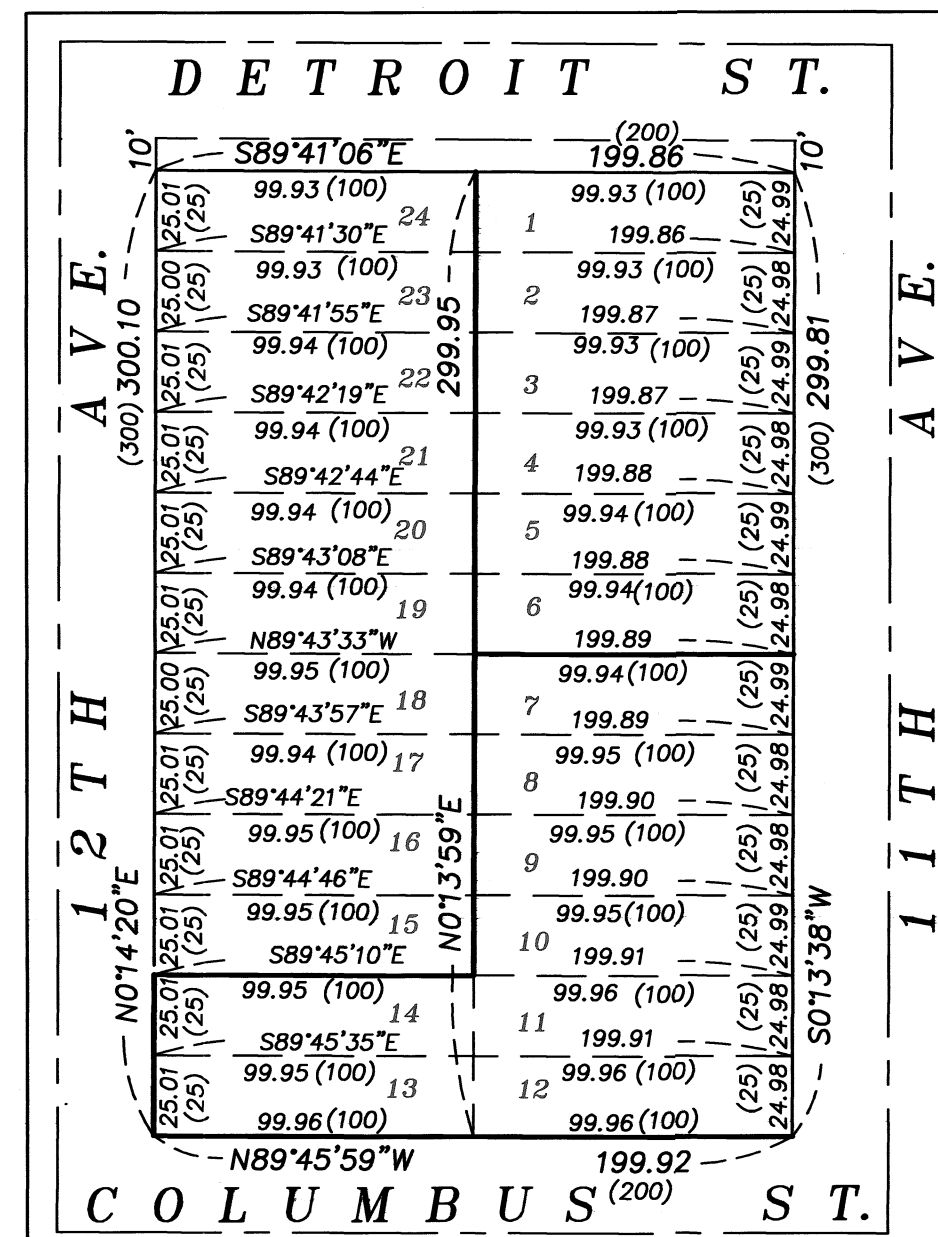
**SCALE: 1"=60'**

**NARRATIVE**

This survey was done at the request of Heidi Gordon, owner of the land within. Ms. Gordon wanted to have the exteriors of her property monumented. I recover centerline monuments as shown. Though there is no record, these monuments have a long history of acceptance and are harmonious with platted distances. The concrete monument called for at the intersection of 12th Ave and Detroit Street has to be either removed or paved over and is non-ferrous. To avoid undue damage to the road, I opt to retrace Surveys 20-62 and 34-76 which make ties to this monument to place the position. I replace this monument with a cap at grade, and in doing so, hit concrete approx. 20 inches below the surface. To place the intersection of Columbus Street and 10th Ave. I proportion between the monuments along 10th Street at Detroit Street and Baltimore Street. From this position, I drive a line to the 3/4" iron pin at the intersection of Columbus Street and 12th Ave. I place the Columbus Street and 11th Street intersection at proportionate position along this line. I drive a line from this point to a point midway between the pins at the SE corner of Block 21 and the SW corner of Block 22. I intersect this line with a 40 foot offset from the pins set by Survey 20-62 (on the South line of Block 21 as originally platted) to place the intersection of Detroit and 11th Ave. Block breakdown is as per standard proportion. I find a fenceline and improved gravel parking area encroaches into Lot 14 as shown. The road to the Community Center along Columbus, as well as power and sewer utilities, fall on portions of the property that accrued by way of vacation. I find no other unusual conditions with this survey.

**LEGEND**

- Found unrecorded monument as described, held as intersection monument
- Found 5/8" iron pin set by Survey Number 20-62
- Found 5/8" iron pi, set by Survey Number 32-69
- ◆ Found 5/8" iron pin, set by Survey Number 34-76
- ▲ Found 1" iron pin, set by Survey Number 17-77
- Set 5/8"x30" (unless otherwise specified) iron pin with plastic cap marked BGB SURVEY MARKER
- Centerline
- \*- Fenceline
- ( ) Record measurement as per plat of Hindman's Addition
- [ ] Record measurement as per Survey Number 34-76
- { } Record measurement as per Survey Number 17-77
- SS Sanitary Sewer Line
- Edge of gravel
- ~~~ Creek
- ⊙ Manhole
- ⊕ Light Pole



**BLOCK 36 DETAIL**

SCALE 1"=60'

UNION COUNTY SURVEYOR  
 Date Received 2/25/22  
 Date Filed 2/25/22  
 By [Signature]  
 File No. 003-2022

REGISTERED PROFESSIONAL LAND SURVEYOR  
 [Signature]  
 OREGON JUNE 2, 2010  
 JEFFREY S. HSU  
 83571  
 Renewal Date: June 30, 2023.

**BAGETT, GRIFFITH & BLACKMAN**  
 2006 Adams Avenue, LaGrande, Oregon  
 Map of Survey  
 Situated in Block 36,  
 Hindman's Addition to the City of Elgin  
 UNION COUNTY, OREGON  
 SURVEYED FOR Heidi Gordon  
 SURVEYED BY J. S. H.  
 Scale: 1" = 60" Drawn by: J. S. H. Feb. 2022