

REFERENCE MATERIAL

Union County Monumentation Records
 Umatilla County Monumentation Records
 Union County Survey Number 11-82
 (Umatilla County Survey 82-087-B)
 Union County Survey Number 026-1992
 (Umatilla County Survey 93-007-B)
 Union County Survey Number 044-1994
 (Umatilla County Survey 94-112-B)
 Union County Survey Number 027-2003
 Union County Survey Number 015-2016
 (Umatilla County Survey 16-066-B)

Field Notes for GLO Contract Number 397,
 executed by Jacob Cooper, dated July 1, 1881

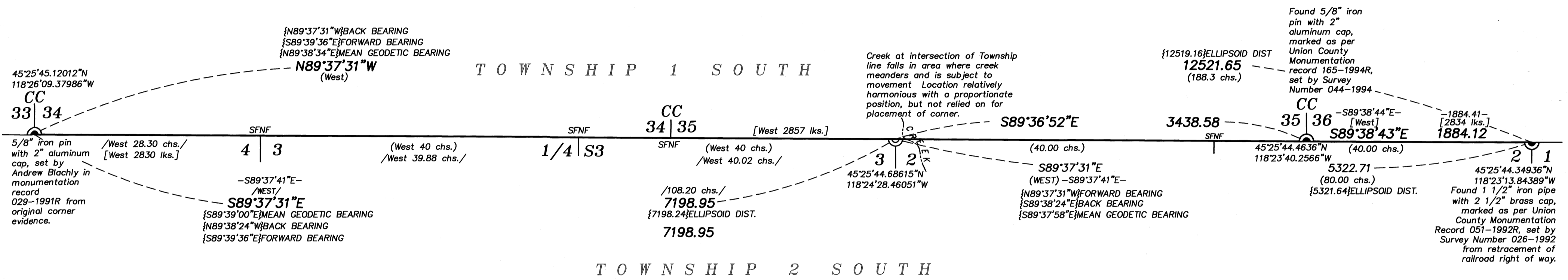
Field Notes for GLO Contract Number 451,
 executed by Rufus Moore, dated June 12, 1882

Field Notes for GLO Contract Number 635, dated
 April 19, 1895, executed by Manius Buchanan

BASIS OF BEARING

The Southeast corner of Section 11 to the Northeast corner of Section 2, Township 2 South, Range 35 East of the Willamette Meridian being North 0°02'02" East, as per Union County Survey Number 027-2003

SCALE: 1"=600'



NARRATIVE

This survey was done at the request of Patrick Marolla, on behalf of Hancock Forest Management, land manager for the land within. Mr. Marolla wanted the Northwest corner of Section 2 monumented prior to logging. I make a diligent search for the corner as well as other controlling GLO corners along this line. Due to a long history of logging in this area, I find no remains of original corner evidence. The Northeast corner of Section 2 was monumented in Survey 044-1994 from a retracement of the railroad. And the Southwest corner of Section 34 was monumented by Blachley in 1992 from original corner evidence. Manius Buchanan did a careful retracement of the line from the Northwest corner of Section 2 West. At the time, he was unaware of Rufus Moore's closing corner at the Southwest corner of Section 34, but his retracement indicates Moore's closing corner to be on line. I therefore use Buchanan's measurements as a basis for a proportion along this portion of the line. The corner running East from the Northwest corner of Section 2 was run by Jacob Cooper in the original survey of the Township line. The closing corner at the Southeast of Section 35 was placed by the State Parks surveyor, Russell Pinard in Survey Number 044-1994 at a proportioned position. I therefore rely on the Northeast corner of Section 2 as a basis for the proportion for the corner set by this survey. A topographic call to a creek falls relatively close to this corner. The creek falls in a meadow where it appears to follow multiple paths as it crosses within the vicinity of the Township line. I find that even though this creek is harmonious with record measurements, there is no definitive point to measure from. I consider placement of the corner by topographic call to be therefore unreliable. Being on a township line, I use NGS software Forward and Inverse in the Geodetic Toolkit to compute a corner position on a parallel of latitude. I find the results to be nearly identical to a result done by plane geometry. I show the output results of the software as well as geodetic coordinates hereon. I find no other unusual conditions with this survey.

LEGEND

- Found monument as described, marked as per Union/Umatilla County Monumentation Records
- Set 2 1/2"x30" aluminum pipe with 3" aluminum cap, marked as per Union/Umatilla County monumentation records, filed separately
- Creek
- Record measurement as per field notes of GLO Contract No. 397, executed by Cooper
- Record measurement as per field notes of GLO Contract No. 451, executed by Rufus Moore
- Record measurement as per field notes of GLO Contract No. 635, executed by Manius Buchanan
- Record measurement as per Union County Survey Number 044-1994/Umatilla County Survey Number 94-112-B
- Geodetic Measurement

REGISTERED
 PROFESSIONAL
 LAND SURVEYOR

 OREGON
 JUNE 2, 2010
 JEFFREY S. HSU
 83571

Renewal Date: June 30, 2023

UNION COUNTY
 SURVEYOR
 Date Received 11/19/21
 Date Filed 11/19/21
 By
 File No. 054-2021

BAGETT, GRIFFITH & BLACKMAN
 2006 Adams Avenue, LaGrande, Oregon
 Map of Survey
 Situate in Section 34, 35, 36 of township 1 South, and Section 2, 3, and 4, Township 2 South, Range 35 East of the Willamette Meridian
 UNION/UMATILLA COUNTY, OREGON
 SURVEYED FOR Hancock Forest Management
 SURVEYED BY J. S. H.
 Scale: 1" = 600' Drawn by: J. S. H. Nov. 2021