

BASIS OF BEARING

The South line of the Southeast quarter of Section 24, Township 5 South, Range 38 East of the Willamette Meridian being North 88°30'31" East, as per Survey Number 28-87

SCALE: 1" = 800'

LEGEND

Found monument as described, marked as per Union County monumentation records

Found 2 1/2" aluminum pipe with 2 1/2" aluminum cap, marked as per Union County monumentation records, set by Survey Number 28-87

Found 2 1/2" aluminum pipe with 3" aluminum cap, marked as per Union County monumentation records, set by Survey Number 035-2020

Found original GLO corner and set 2 1/2" aluminum pipe with 3" aluminum cap, marked as per Union County monumentation records

Set 5/8"x30" iron pin with 2 1/2" aluminum cap, marked as per Union County monumentation records

Record measurement as per field notes of GLO Contract No. 388, executed by W.B. Barr dated May 7, 1881

Record measurement as per field notes of GLO Contract No. 102, executed by Timothy W. Davenport dated July 20, 1863

Record measurement as per Union County Survey 028-1987

Record measurement as per Union County Survey 035-2020

Fence

Set steel fence post on line

REFERENCE MATERIAL

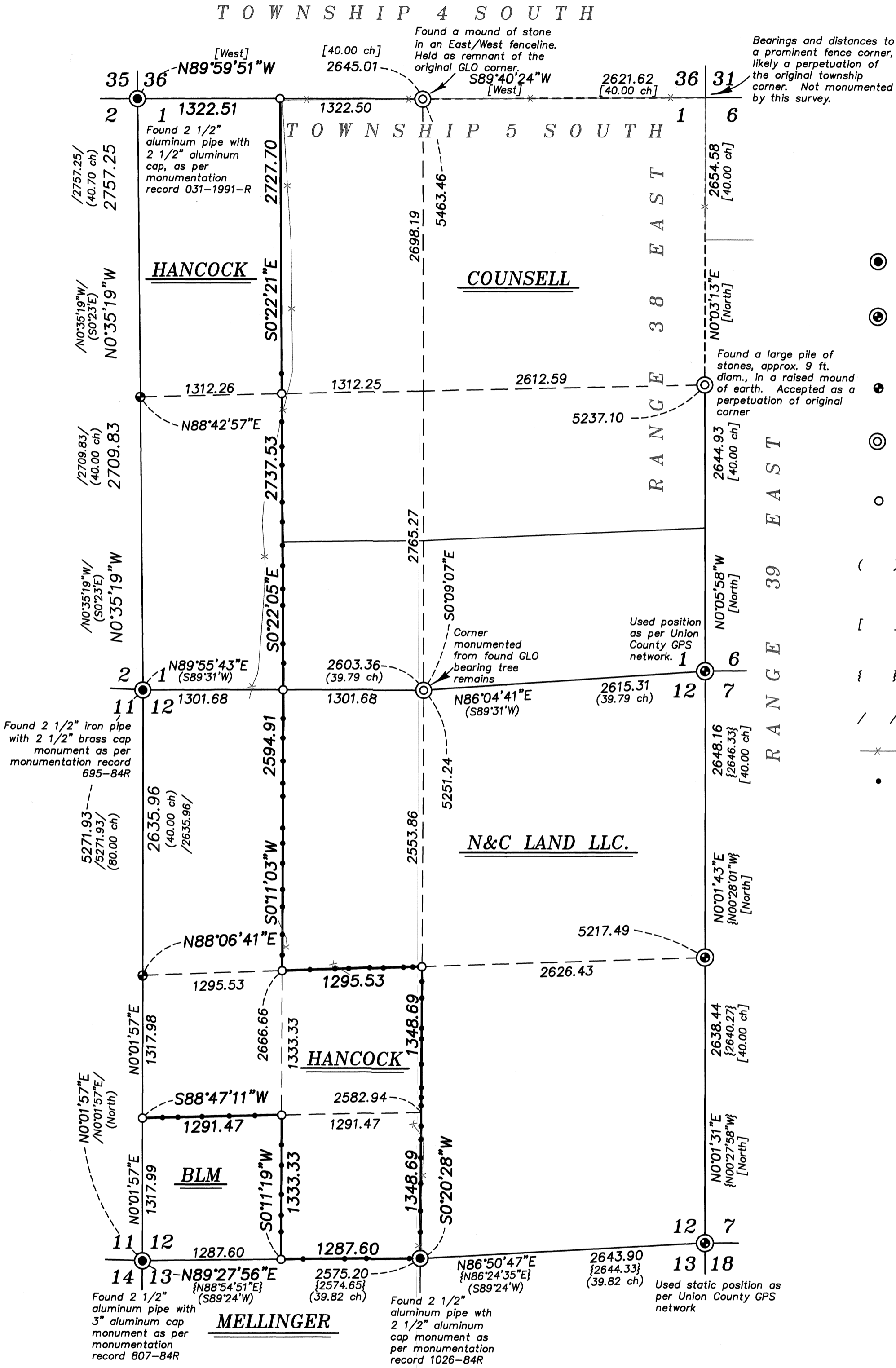
Field notes of GLO Contract No. 388, executed by W. B. Barr, dated May 7, 1881

Field notes of GLO Contract No. 102, executed by Timothy W. Davenport, dated July, 20 1863

Union County Monumentation Records
Survey Number 028-1987
Survey Number 050-2015
Survey Number 035-2020

DEED REFERENCES
Microfilm Document Number 20134275

UNION COUNTY SURVEYOR	
Date Received	11/1/21
Date Filed	11/1/21
By	Neil G. Alden Surveyor
File No.	046-2021



NARRATIVE

This survey was done at the request of Patrick Marolla, on behalf of Hancock Forest Management, land manager for the lands within. Mr. Marolla wanted select lines monumented and posted prior to logging. I recover the monuments as shown hereon and accept them in place. At the quarter corner between Section 1 and 12, I find the original Southeast bearing tree from which I set a monument at record distance and bearing. At the North quarter corners of Section 1 I find a mound of stone in an East/West fenceline. Finding this mound to be harmonious in bearing and distance to the Section corner to the West and to a prominent fence corner at the township corner. The landowner has attested that this is a long standing fence corner and has remained in existence as long as he has known, and I believe this is a likely perpetuation of the original township corner. At the East quarter corner position, I find a pile of stones in a raised mound of earth, in an area relatively devoid of stone. Finding this pile harmonious with the aforementioned fence corner at the township corner position, I accept this as a perpetuation of the original corner monument. Section subdivisions are done as per BLM Manual of Instructions 2009. I find no unusual conditions with this survey.

REGISTERED
PROFESSIONAL
LAND SURVEYOR

OREGON
JUNE 2, 2010
JEFFREY S. HSU
83571

Renewal Date: June 30, 2023.

BAGETT, GRIFFITH & BLACKMAN 2006 Adams Avenue, LaGrande, Oregon Map of Survey	
Subdivision of Sections 1 and 12, Township 5 South, Range 38 East of the Willamette Meridian	
UNION COUNTY, OREGON	
SURVEYED FOR	Hancock Forest Management
SURVEYED BY	J. S. H.
Scale: 1" = 800'	Drawn by: K. A. T. Aug-Oct 2021

SURVEY NUMBER 046-2021