

# LOT LINE ADJUSTMENT

## BASIS OF BEARING

Partition Plat 20100008T

SCALE: 1" = 60'

## LEGEND

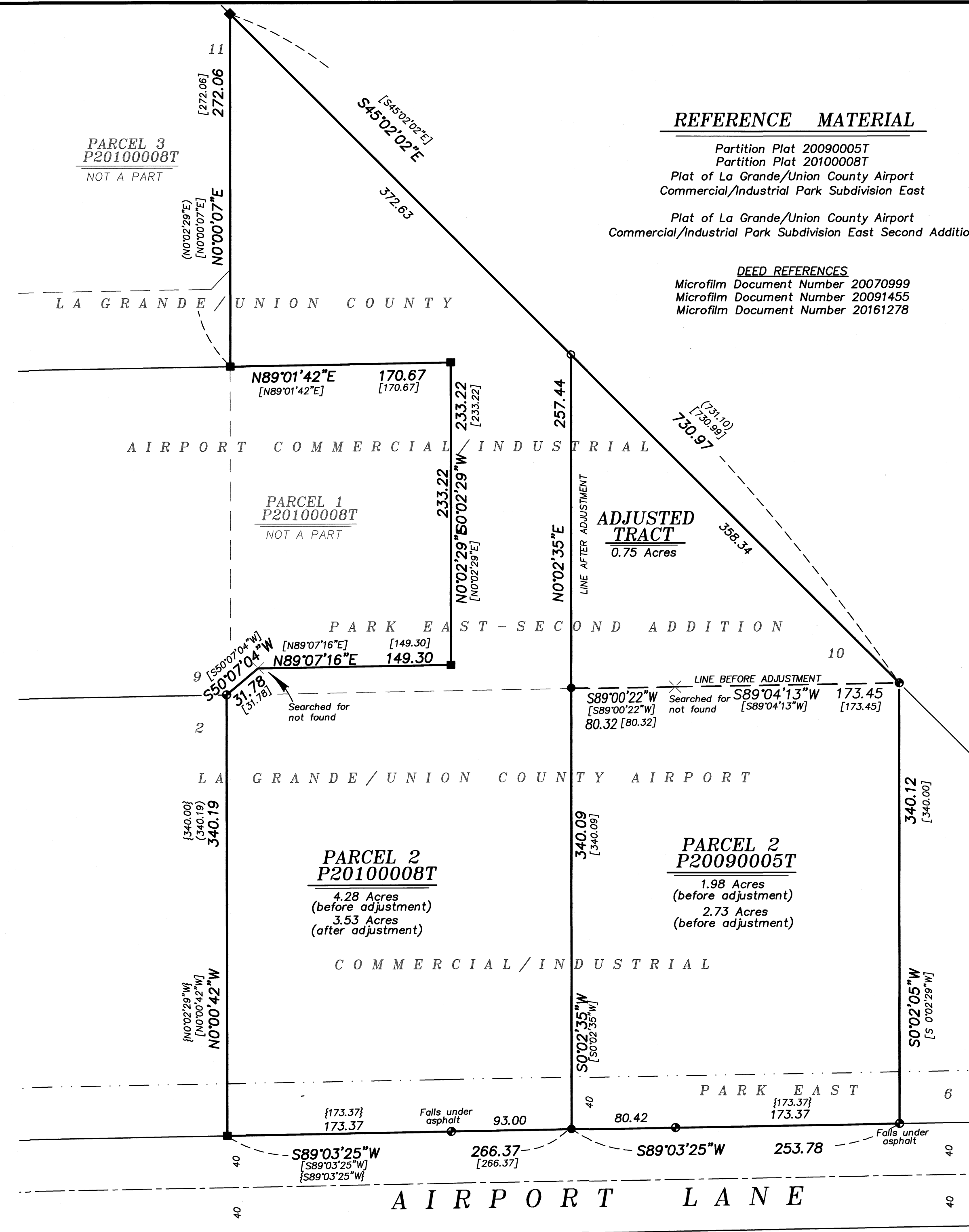
- ◆ Found 5/8" iron pin with aluminum cap marked AP&A OR2849 WA 41295, set by plat of La Grande/Union County Airport Commercial/Industrial Park Subdivision East - Second Addition
- Found 5/8" iron pin with plastic cap marked AP&A, set by plat of La Grande/Union County Airport Commercial/Industrial Park Subdivision East
- Found 5/8" iron pin with plastic cap marked BGB SURVEY MARKER, set by Partition Plat 20100008T
- Found 5/8" iron pin with plastic cap marked BGB SURVEY MARKER, set by Partition Plat 20090005T
- Set 5/8" x 30" iron pin with plastic cap marked BGB SURVEY MARKER
- Easement Line
- - - Centerline
- ( ) Record measurement as per plat of La Grande/Union County Airport Commercial/Industrial Park East Second Addition.
- { } Record measurement as per plat of La Grande/Union County Airport Commercial/Industrial Park East
- [ ] Record measurement as per Partition Plat 20100008T

### REFERENCE MATERIAL

Partition Plat 20090005T  
 Partition Plat 20100008T  
 Plat of La Grande/Union County Airport  
 Commercial/Industrial Park Subdivision East  
  
 Plat of La Grande/Union County Airport  
 Commercial/Industrial Park Subdivision East Second Addition

### DEED REFERENCES

Microfilm Document Number 20070999  
 Microfilm Document Number 20091455  
 Microfilm Document Number 20161278



REGISTERED  
 PROFESSIONAL  
 LAND SURVEYOR

OREGON  
 JUNE 2, 2010  
 JEFFREY S. HSU  
 83571

Renewal Date: June 30, 2021

UNION COUNTY  
 SURVEYOR

Date Received 10/2/2020

Date Filed 10/2/2020

By J. S. H.

File No. 033-2020

## NARRATIVE

This survey was done at the request of Jamie Challis. Mr. Challis wanted to adjust the common line between him and Nash as shown. I recover monuments set or recovered by Partition Plats 20090005T and 20100008T and find them harmonious with said plats. I place the line at the direction of Mr. Challis. Legal descriptions have been prepared separately. I find no unusual conditions with this survey.

**BAGETT, GRIFFITH & BLACKMAN**  
 2006 Adams Avenue, LaGrande, Oregon  
 Map of Survey

Between Parcel 2, Partition Plat 20100008T and Parcel 2 of  
 Partition Plat 20090005T,  
 Situated in the Southeast quarter of Section 24,  
 Township 3 South, Range 38 East of the Willamette Meridian,

UNION COUNTY, OREGON

SURVEYED FOR	Jamie Challis
SURVEYED BY	J. S. H.
Scale: 1" = 100'	Drawn by: J. S. H. Sept. 2020

SURVEY NUMBER 033-2020