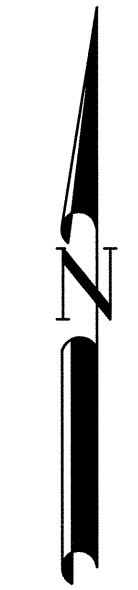


# BASIS OF BEARING

Solar observation taken at the Northwest corner of Section 19, Township 4 South, Range 40 East of the Willamette Meridian.

SCALE: 1" = 500'



## LEGEND

- 2 1/2" aluminum pipe with 2 1/2" aluminum cap marked as per Union County Monumentation records, placed by Union County GPS network
- Set 5/8"x30" iron pin with 2 1/2" aluminum cap, marked as per Union County Monumentation Records
- ⊙ Set 2 1/2"x30" aluminum pipe with 2 1/2" aluminum cap, marked as per Union County Monumentation records
- — — Centerline
- ( ) Record measurement as per Union County Highway Department survey dated Oct. 1938
- [ ] Record measurement as per field notes of GLO Contract No. 103, dated September 1863, executed by David P. Thompson

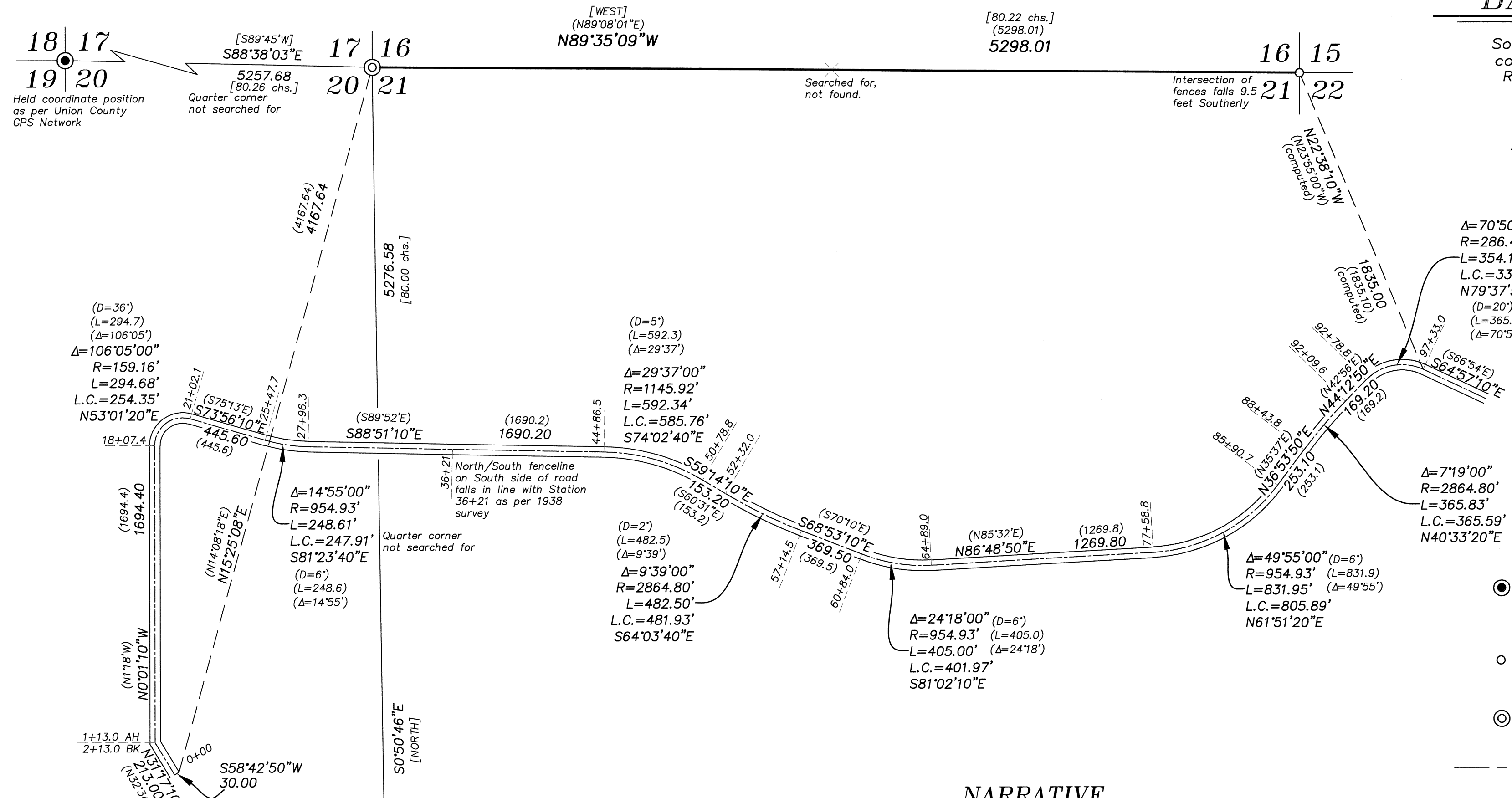
## NARRATIVE

This survey was done at the request of the Union County Surveyor. In a recent scanning project by the Union County Road Department, records were discovered that tied the road alignment of High Valley Road to section corners. As these corners have never been brought to modern standard, the purpose of this survey is to retrace this road alignment in order to monument the location of these section corners. Road records show two maps, one dated 1938 and shows the alignment with landowners, water and structural improvements. The other map shown the road alignment with coordinate ties to the Northeast and Northwest corners of Section 21. Along the road, there are two coordinates given, one at the Easterly right of way line of Station 0+00 and the other at Station 36+21. The coordinate at Station 36+21 appears to reference a fence corner, but it is somewhat unclear.

I retrace the centerline of the constructed road and find a harmonious fit to the alignment shown on the 1938 road surveys. On the curves, I hold the delta angle and the degree of curve. I place all tangent lines perpendicular to radial lines. I believe the couple of instances on the original map where tangent lines and radial lines are not perpendicular are scrivener errors. I place the section corner positions by hinging on a point 30 feet from Station 0+00 and rotating the the alignment to my basis of bearing. I then make a diligent search for any remaining corner evidence at these positions. The Northeast corner of Section 21 falls on a rock bluff, where setting of a durable monument would be difficult. I would find it unlikely that pits were dug in this area, as mentioned in the original GLO notes, as the rock bluff extends for some distance in all directions. I do however find that the position is harmonious with lines of possession, falling within 10 feet of an intersection of fences. I therefore, accept this coordinate position as a perpetuation of the original GLO corner.

The Northwest corner falls 72 feet West of an existing fence corner. I make a diligent search for GLO pits or posts, and the stone called for in Old Book Page 315. There are several stones of called size that fall in stone mounds, however, I can find no marks on these. Due to the likelihood of the stone mounds being remnants of old rock jacks, I do not accept these and examine the coordinate position's relationship to adjacent corners. A tie to the section corner common to Sections 17, 18, 19 and 20 is harmonious with the record GLO distance, though the bearing is skewed a degree and a half off of record. The rock mound, originally recovered in Survey Number 003-2001 by Mark Heidecke, and accepted as the SW section corner of Section 21 was examined in the course of this survey. I find a prominent stone mound in this location. Excavation at the center of the stone mound did reveal possible shards of a wooden post. I accept this as the original GLO corner and monument its position. There is also very good harmony between this corner and the Northwest corner of Section 21.

I find no other unusual conditions with this survey.



## REFERENCE MATERIAL

- Union County Monumentation Records Survey Number 003-2001
- Union County Highway Department Survey of Union-High Valley Market Road No. 1, dated October 1938
- Old Book Survey 315
- Field Notes of GLO Contract No. 103, dated September 1863, executed by David P. Thompson

REGISTERED  
PROFESSIONAL  
LAND SURVEYOR

OREGON  
JUNE 2, 2010  
JEFFREY S. HSU  
83571

Renewal Date: June 30, 2021

UNION COUNTY  
SURVEYOR

Date Received 12/10/19

Date Filed 12/10/19

By *[Signature]*

File No. 045-2019

**BAGETT, GRIFFITH & BLACKMAN**  
2006 Adams Avenue, LaGrande, Oregon

Map of Survey

Situated in Section 16 and 21,  
Township 4 South, Range 40 East of  
the Willamette Meridian

UNION COUNTY, OREGON

SURVEYED FOR	Union County Surveyor
SURVEYED BY	J. S. H.
Scale: 1" = 500'	Drawn by: J. S. H. Oct-Dec 2019

SURVEY NUMBER 045-2019