

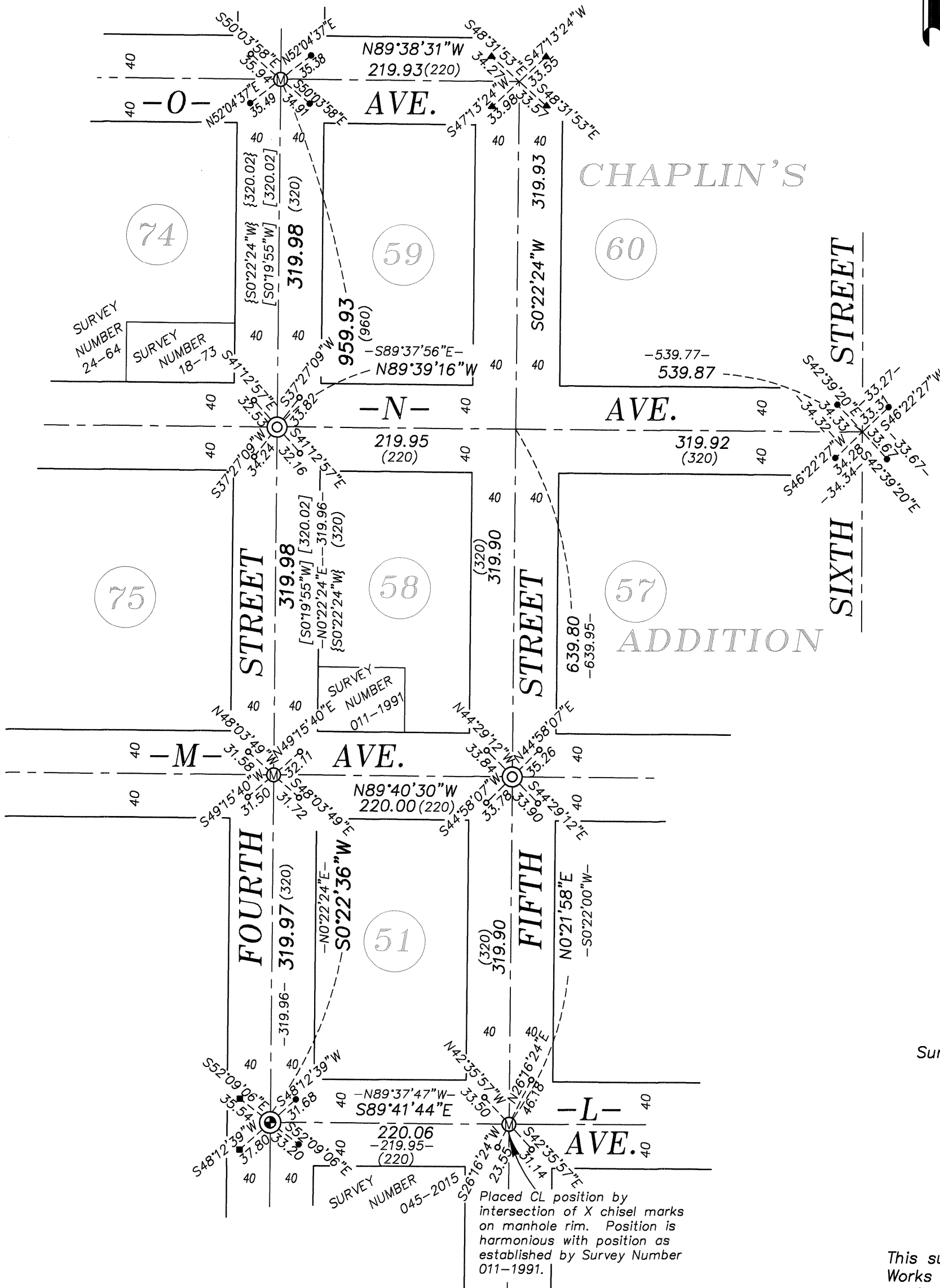
BASIS OF BEARING

Forward bearing as published by the U.S.C. and G.S. from Δ COLLEGE to Δ VALLEY Dated 1946.

SCALE: 1" = 100'

LEGEND

- ⊙ Found brass disc in concrete, set by Survey Number 028-2005
- Found lead plug reference set by Survey Number 18-89
- Found brass screw with washer reference, set by Survey Number 028-2005
- ▲ Found brass screw with washer reference, set by Survey Number 005-2014
- ⊙ Set 2" brass disc in concrete
- Set lead plug with brass washer marked OPLS 83571
- () Record measurement as per 1922 monumentation of La Grande (Survey Number 18-89)
- [] Record measurement as per Survey Number 18-73
- { } Record measurement as per Survey Number 014-2001
- - Record measurement as per Survey Number 011-1991



REFERENCE MATERIAL

- Survey Number 24-64
- Survey Number 18-73
- Survey Number 011-1991
- Survey Number 014-2001
- Survey Number 028-2005
- Survey Number 014-2013
- Survey Number 005-2014
- Survey Number 006-2014
- Survey Number 045-2015
- Survey Number 18-89 (1922 monumentation of La Grande)

NARRATIVE

This survey was done at the request of Ray Crapo, on behalf of the Public Works department of the City of La Grande. Mr. Crapo wanted select centerline intersections monumented following a paving project. I place intersections monuments along 4th Street by proportion between the intersection of L Street (monumented by Survey Number 028-2005) and O Ave, positioned as per Survey Number 006-2014. Manhole reference marks were still existent on the manhole of L Ave and Fifth Street, and I place this corner by intersecting the lines between chisel marks. Centerline of N Ave and Fifth Street is placed by proportion between N Ave and 4th Street and N Ave. and 6th Street. From this position, I place the intersection of M Ave. and Fifth Street by proportion between the position established at L Ave and Fifth Street. This is identical in methodology with Survey Number 011-1991 and the measurements are harmonious with said survey as well as with the 1922 monumentation of La Grande (Survey 18-89). I find no other unusual conditions with this survey.

REGISTERED
PROFESSIONAL
LAND SURVEYOR

[Signature]

OREGON
JUNE 2, 2010
JEFFREY S. HSU
83571

Renewal Date: June 30, 2019

UNION COUNTY
SURVEYOR

Date Received 3/27/19

Date Filed 3/27/19

By *[Signature]*

File No. 003-2019

BAGETT, GRIFFITH & BLACKMAN
2006 Adams Avenue, LaGrande, Oregon
Map of Survey
Monumentation of centerline intersections along 4th Street, between Penn Ave and L Ave., 5th Street and L Ave and Penn St. and 3rd Ave. City of La Grande

UNION COUNTY, OREGON

SURVEYED FOR	City of La Grande
SURVEYED BY	J. S. H.
Scale: 1" = 100'	Drawn by: J. S. H. Jan-Mar. 2019