

LOT LINE ADJUSTMENT

BASIS OF BEARING

Solar observation taken at the North quarter corner of Section 15, Township 1 North, Range 39 East of the Willamette Meridian.

SCALE: 1" = 60'

REFERENCE MATERIAL

DEED REFERENCES	
Survey Number 2-74	Book 126, Page 256
Survey Number 77-77	Book 147, Page 624
Survey Number 9-86	Book 152, Page 170
Survey Number 18-86	Microfilm Document Number 26650
Survey Number 022-1991	Microfilm Document Number 72445
Survey Number 008-1997	Microfilm Document Number 98966
Survey Number 006-2000	Microfilm Document Number 124439
Survey Number 015-2006	Microfilm Document Number 129219
Survey Number 004-2009	Microfilm Document Number 156255
Survey Number 042-2013	Microfilm Document Number 20013356
Survey Number 049-2015	Microfilm Document Number 20014452
Survey Number 006-2016	Microfilm Document Number 20015295
Plat of Elgin Industrial Park	Microfilm Document Number 20020946
ODOT Strip map 8B-31-25	Microfilm Document Number 20053095
	Microfilm Document Number 20050692
	Microfilm Document Number 20092425
	Microfilm Document Number 20121252
	Microfilm Document Number 20140287

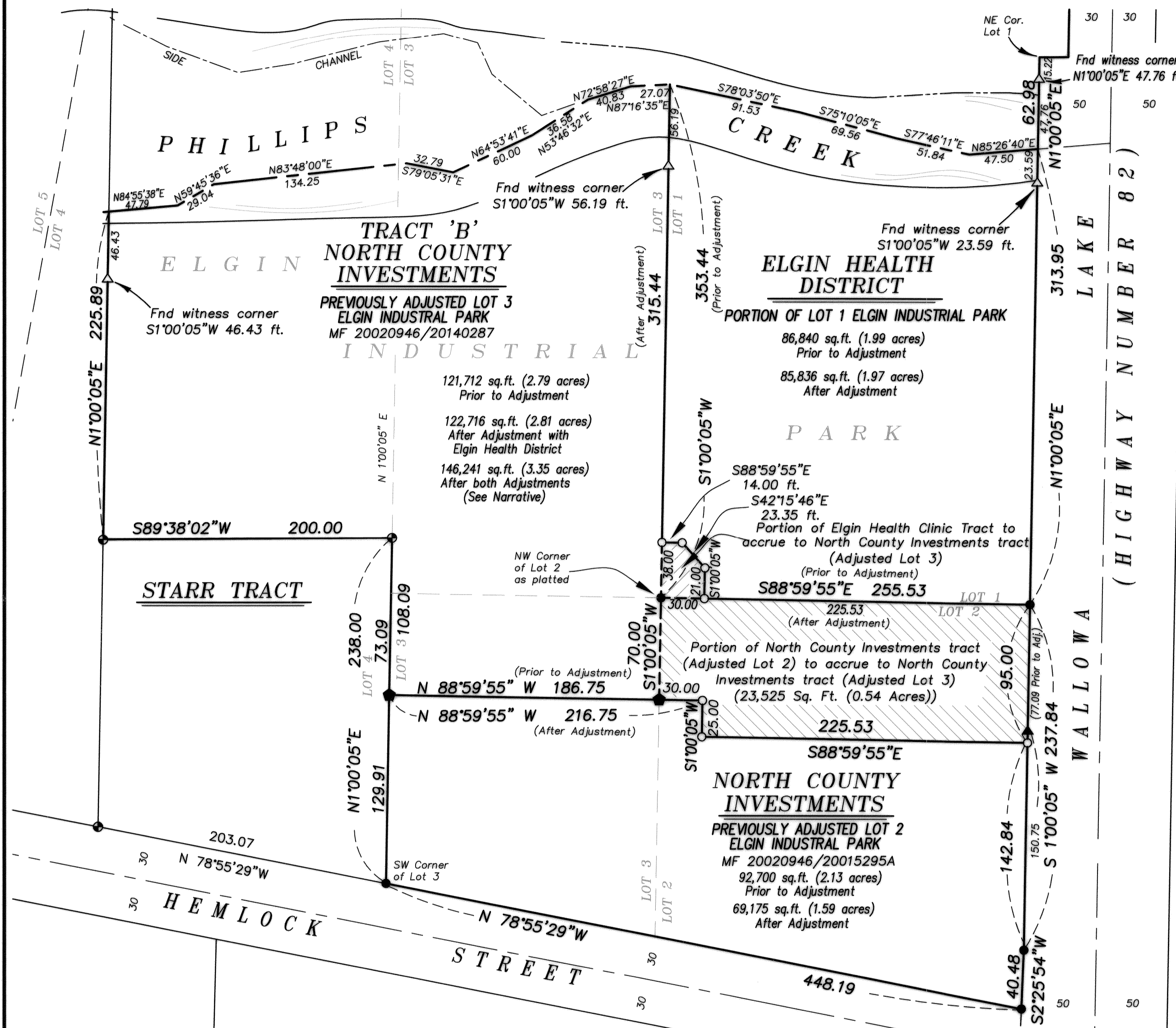
LEGEND

- Found 5/8" iron pin with plastic cap marked BGB SURVEY MARKER set by plat of Elgin Industrial Park
- Found 5/8" iron pin with aluminum cap marked APA OR 2849 set by Survey Number 004-2009
- ◆ Found 5/8" iron pin with plastic cap marked BGB SURVEY MARKER set by Survey Number 049-2015
- ▲ Found 2" aluminum cap set by ODOT Strip map 8B-31-25
- △ Found 5/8" iron pin with plastic cap marked BGB SURVEY MARKER set by Survey Number 006-2016
- Set 5/8" x 30" iron pin with plastic cap marked "BGB SURVEY MARKER"
- Centerline
- - - - - Platted Lot Line

APPROVALS

This lot line adjustment approved this 23 day of MAY, 2018.

Brock Eckstein
Brock Eckstein, City of Elgin Recorder/Administrator



NARRATIVE

This survey was done at the request of Bob Wiles on behalf of North County Investments, one of the landowners involved in this adjustment. The purpose of this survey is to monument two lot line adjustments, one between North County Investments and the Elgin Health District, and the other between two tracts in the ownership of North County Investments. I base the location of these ownerships on the found monumentation of the existing surveys as shown. These tracts were previously adjusted as documented on survey numbers 049-2015 and 006-2016. I find no unusual conditions with this survey.

REGISTERED PROFESSIONAL LAND SURVEYOR

OREGON JULY 17, 1986
RICK G. ROBINSON
2219

Renewal Date: Dec. 31, 2018

UNION COUNTY SURVEYOR
Date Received 5/23/18
Date Filed 5/23/18
By [Signature]
File No. 018-2018

BAGETT, GRIFFITH & BLACKMAN
2006 Adams Avenue, LaGrande, Oregon
Map of Survey
LOT LINE ADJUSTMENT
Situate in Lots 1, 2 3 and 4
Elgin Industrial Park
City of Elgin
UNION COUNTY, OREGON
SURVEYED FOR Bob Wiles
SURVEYED BY R.G.R.
Scale: 1" = 60' Drawn by: R.G.R. May 2018