

# BASIS OF BEARING

Solar observation taken at the North quarter corner of Section 15, Township 1 North, Range 39 East of the Willamette Meridian.

SCALE: 1" = 600'

## LEGEND

- Found 2 1/2" aluminum pipe with 2 1/2" aluminum cap set by Survey Number 021-2010
- ⊙ Found 2 1/2" aluminum pipe with 2 1/2" aluminum cap set by Survey Number 9-87
- ⊕ Found 2 1/2" aluminum pipe with 2 1/2" aluminum cap set by Survey Number 31-89
- Found 2 1/2" aluminum pipe with 2 1/2" aluminum cap set by Survey Number 022-1997
- ⊙ Set 2 1/2"x30" aluminum pipe with 2 1/2" aluminum cap marked as per Union County Monumentation Records, filed separately
- Set 5/8"x30" Iron pin with 2 1/2" aluminum cap monument (see monumentation record filed separately)
- Set steel fence post on line
- ( ) Record measurement as per GLO Contract Number 120
- (( )) Record measurement as per GLO Contract Number 102
- [ ] Record measurement as per Old Book Survey Number 91, recorded in Old Book of Surveys, Page 192
- - Record measurement as per Old Book Survey Number 92, recorded in Old Book of Surveys Page 196
- { } Record information of Survey Number 021-2010
- \* \* Approximate measurement
- × Existing fence line
- SFNF Corner searched for, not found

## REFERENCE MATERIAL

Union County Monumentation Records  
 Old Book of Surveys Page 192  
 Old Book of Surveys Page 196  
 Survey Number 25-91  
 Survey Number 9-87  
 Survey Number 31-89  
 Survey Number 021-2010  
 Minor Partition Plat Number 20090011T

Field Notes of GLO Contract No. 102, executed by Timothy Davenport, dated July 20 1863

Field Notes of GLO Contract No. 120 executed by Joseph G. Gray and William H. Odell, dated May, 27, 1867

### DEED REFERENCES

Microfilm Number 20071002  
 Microfilm Number 20062362

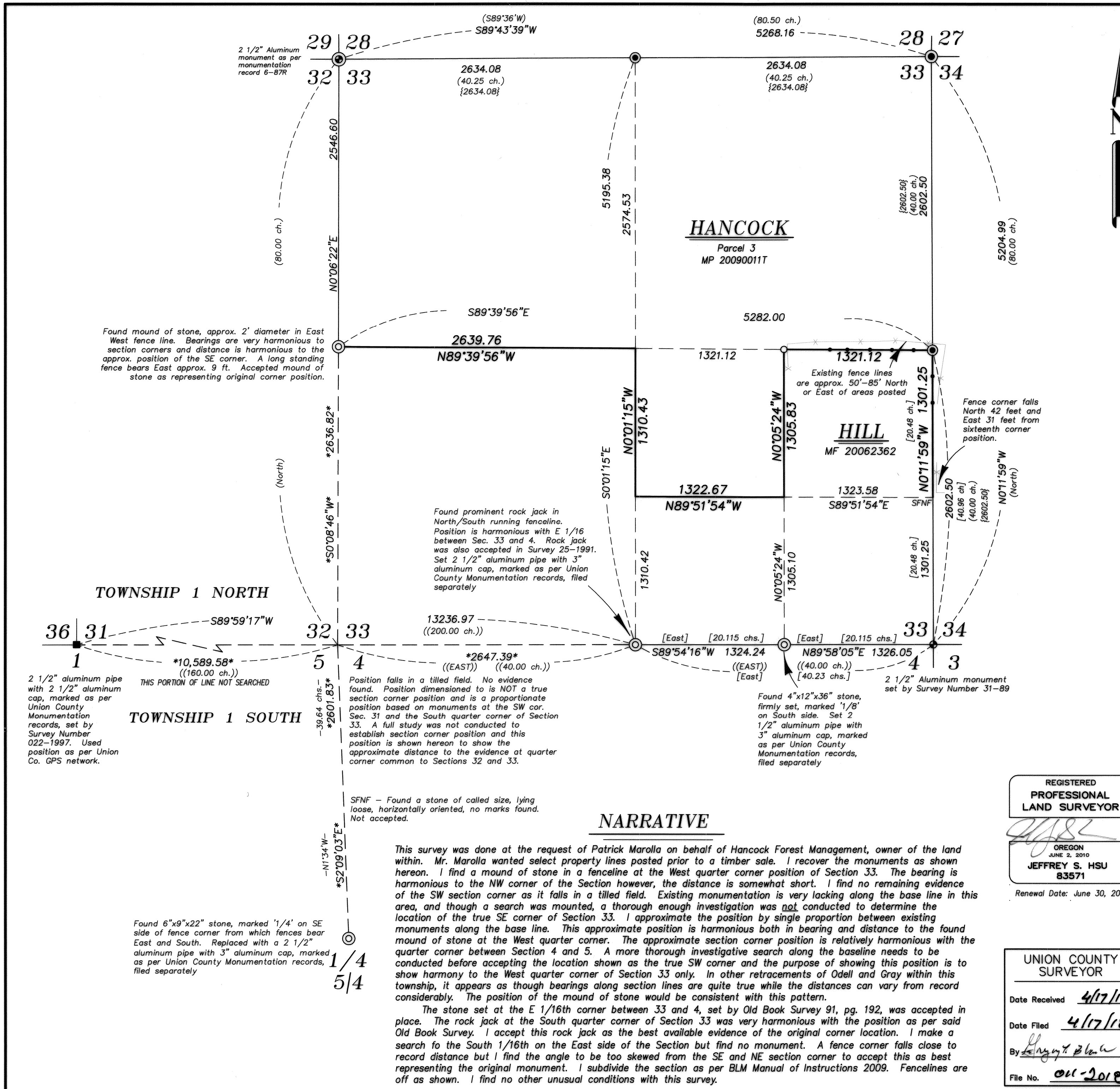
**BAGETT, GRIFFITH & BLACKMAN**  
 2006 Adams Avenue, LaGrande, Oregon  
 Map of Survey

Situate in Section 33,  
 Township 1 North, Range 39 East  
 of the Willamette Meridian

UNION COUNTY, OREGON

SURVEYED FOR	Hancock Forest Management Inc.	
SURVEYED BY	J.S.H.	4/18
Scale: 1" = 600'	Drawn by: J.S.H.	4/18

**SURVEY NUMBER 011-2018**



### HANCOCK

Parcel 3  
 MP 20090011T

### HILL

MF 20062362

## NARRATIVE

This survey was done at the request of Patrick Marolla on behalf of Hancock Forest Management, owner of the land within. Mr. Marolla wanted select property lines posted prior to a timber sale. I recover the monuments as shown hereon. I find a mound of stone in a fenceline at the West quarter corner position of Section 33. The bearing is harmonious to the NW corner of the Section however, the distance is somewhat short. I find no remaining evidence of the SW section corner as it falls in a tilled field. Existing monumentation is very lacking along the base line in this area, and though a search was mounted, a thorough enough investigation was not conducted to determine the location of the true SE corner of Section 33. I approximate the position by single proportion between existing monuments along the base line. This approximate position is harmonious both in bearing and distance to the found mound of stone at the West quarter corner. The approximate section corner position is relatively harmonious with the quarter corner between Section 4 and 5. A more thorough investigative search along the baseline needs to be conducted before accepting the location shown as the true SW corner and the purpose of showing this position is to show harmony to the West quarter corner of Section 33 only. In other retracements of Odell and Gray within this township, it appears as though bearings along section lines are quite true while the distances can vary from record considerably. The position of the mound of stone would be consistent with this pattern.

The stone set at the E 1/16th corner between 33 and 4, set by Old Book Survey 91, pg. 192, was accepted in place. The rock jack at the South quarter corner of Section 33 was very harmonious with the position as per said Old Book Survey. I accept this rock jack as the best available evidence of the original corner location. I make a search to the South 1/16th on the East side of the Section but find no monument. A fence corner falls close to record distance but I find the angle to be too skewed from the SE and NE section corner to accept this as best representing the original monument. I subdivide the section as per BLM Manual of Instructions 2009. Fencelines are off as shown. I find no other unusual conditions with this survey.

REGISTERED  
 PROFESSIONAL  
 LAND SURVEYOR

OREGON  
 JUNE 2, 2010  
 JEFFREY S. HSU  
 83571

Renewal Date: June 30, 2019

UNION COUNTY  
 SURVEYOR

Date Received 4/17/18

Date Filed 4/17/18

By Jeffrey S. Hsu

File No. 011-2018

Found mound of stone, approx. 2' diameter in East West fence line. Bearings are very harmonious to section corners and distance is harmonious to the approx. position of the SE corner. A long standing fence bears East approx. 9 ft. Accepted mound of stone as representing original corner position.

Found prominent rock jack in North/South running fenceline. Position is harmonious with E 1/16 between Sec. 33 and 4. Rock jack was also accepted in Survey 25-1991. Set 2 1/2" aluminum pipe with 3" aluminum cap, marked as per Union County Monumentation records, filed separately

Found 4"x12"x36" stone, firmly set, marked '1/8' on South side. Set 2 1/2" aluminum pipe with 3" aluminum cap, marked as per Union County Monumentation records, filed separately

Position falls in a tilled field. No evidence found. Position dimensioned to is NOT a true section corner position and is a proportionate position based on monuments at the SW cor. Sec. 31 and the South quarter corner of Section 33. A full study was not conducted to establish section corner position and this position is shown hereon to show the approximate distance to the evidence at quarter corner common to Sections 32 and 33.

SFNF - Found a stone of called size, lying loose, horizontally oriented, no marks found. Not accepted.

Found 6"x9"x22" stone, marked '1/4' on SE side of fence corner from which fences bear East and South. Replaced with a 2 1/2" aluminum pipe with 3" aluminum cap, marked as per Union County Monumentation records, filed separately

2 1/2" aluminum pipe with 2 1/2" aluminum cap, marked as per Union County Monumentation records, set by Survey Number 022-1997. Used position as per Union Co. GPS network.

TOWNSHIP 1 SOUTH

TOWNSHIP 1 NORTH