

BASIS OF BEARING

Solar observation taken at the Northwest corner of Section 19, Township 4 South, Range 40 East of the Willamette Meridian.

SCALE: 1"=100'

LEGEND

- Found 2 1/2" brass cap in water valve box, marked as per Union County monumentation records
- ◆ Found 5/8" iron pin with plastic cap marked CKA 01119LS set by Survey No. 33-82
- Found 5/8" iron pin with plastic cap marked "BGA SURVEY MARKER" set by Survey Number 12-79
- ◆ Found 5/8" iron pin with plastic cap marked "BGA SURVEY MARKER" set by Survey Number 100-77
- Found 5/8" iron pin with plastic cap marked "BGA SURVEY MARKER" set by Survey Number 79-77
- Found 2" Aluminum Cap in concrete set by Survey Number 054-1998
- Set 5/8"x30" iron pin with plastic cap marked "BGB SURVEY MARKER"
- Centerline
- { } Record measurement as per Plat of North Union
- < > Record measurement as per Survey Number 79-77
- () Record measurement as per Survey Number 12-79
- / / Record measurement as per Survey Number 100-77
- [] Record measurement as per Survey Number 33-82
- - Record measurement as per Survey Number 22-83
- ⊗ Cleanout
- Ⓜ RV Utility hookup

REFERENCE MATERIAL

Union County Monumentation Records
 Plat of North Union
 Survey Number 72-77
 Survey Number 79-77
 Survey Number 100-77
 Survey Number 12-79
 Survey Number 33-82
 Survey Number 22-83
 Survey Number 054-1998
 ODOT strip map 10B-03-25

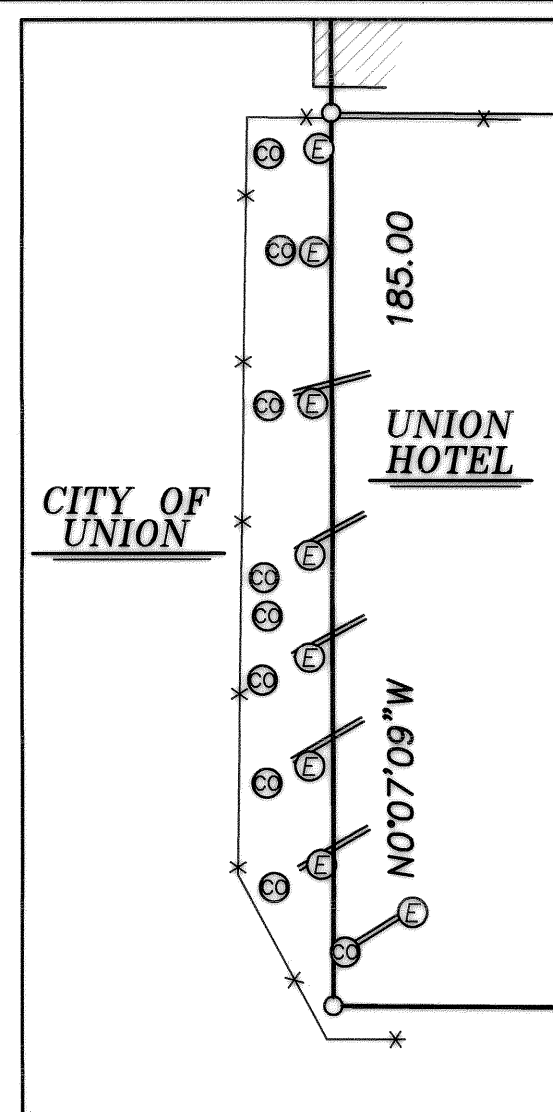
DEED REFERENCES
 Book 133, Page 105
 Book 134, Page 6
 Microfilm Document Number 43645
 Microfilm Document Number 45815
 Microfilm Document Number 63576
 Microfilm Document Number 72173
 Microfilm Document Number 72175
 Microfilm Document Number 961104
 Microfilm Document Number 144239
 Microfilm Document Number 150607
 Microfilm Document Number 20052480
 Microfilm Document Number 20121926

DEED REFERENCES
 Book 27, Page 288
 Book 61, Page 628

NARRATIVE

This survey was done at the request of Rod Mckee, on behalf of the City of Union. Mr. Mckee wanted the line common to the City Park and the Union Hotel (Morden/Rush) marked prior to performing landscaping work. The lines of North Union were placed by Surveys 79-77, 100-77 and 12-79, which ran East/West lines parallel with the line between the monument at the intersection of Delta St/5th St. and Delta St/Main St. East/West dimensions of the blocks were established at record distance as per the original plat. The North/South dimensions of the Northern two tiers of blocks prorated the distance between Delta St/Main St. and Birch St/Main St. I establish the South line of North Union at record distance from the position of Main St/Birch St. This is the same methodology employed by CK Ansell in Survey 33-82. Monuments in Main Street were removed by construction but were tied in Surveys 054-1998 and ODOT strip map 10B-03-25. I reestablish the position of the Main St. intersection monuments from the control points set by Survey 054-1998. I find control point 12 to be significantly different than the reported coordinate. To reestablish pin locations, I utilize the geodetic coordinate as given on the survey. I hold the right of way of Main St. as established by said Survey 054-1998. To place the property lines, I hold the dimension South from the SE corner of Block 1 of North Union and run East/West lines parallel with the South line of North Union the deed record of 200 feet. There are some encroachments onto the city property by the RV spaces and RV utilities as shown. Fencelines are off as shown. I find no other unusual conditions with this survey.

DETAIL SCALE 1"=40



UNION COUNTY SURVEYOR
 Date Received 3/29/18
 Date Filed 3/29/18
 By [Signature]
 File No. 008-2018

REGISTERED PROFESSIONAL LAND SURVEYOR
 [Signature]
 OREGON JUNE 2, 2010
 JEFFREY S. HSU
 83571
 Renewal Date: June 30, 2019

BAGETT, GRIFFITH & BLACKMAN 2006 Adams Avenue, LaGrande, Oregon Map of Survey	
Situated in the SW 1/4 of the SW 1/4 Section 18, Township 4 South, Range 40 East of the Willamette Meridian. City of Union, Oregon UNION COUNTY, OREGON	
SURVEYED FOR	City of Union
SURVEYED BY	J. S. H.
Scale: 1" = 100'	Drawn by: J. S. H. Mar. 2018