

# LOT LINE ADJUSTMENT

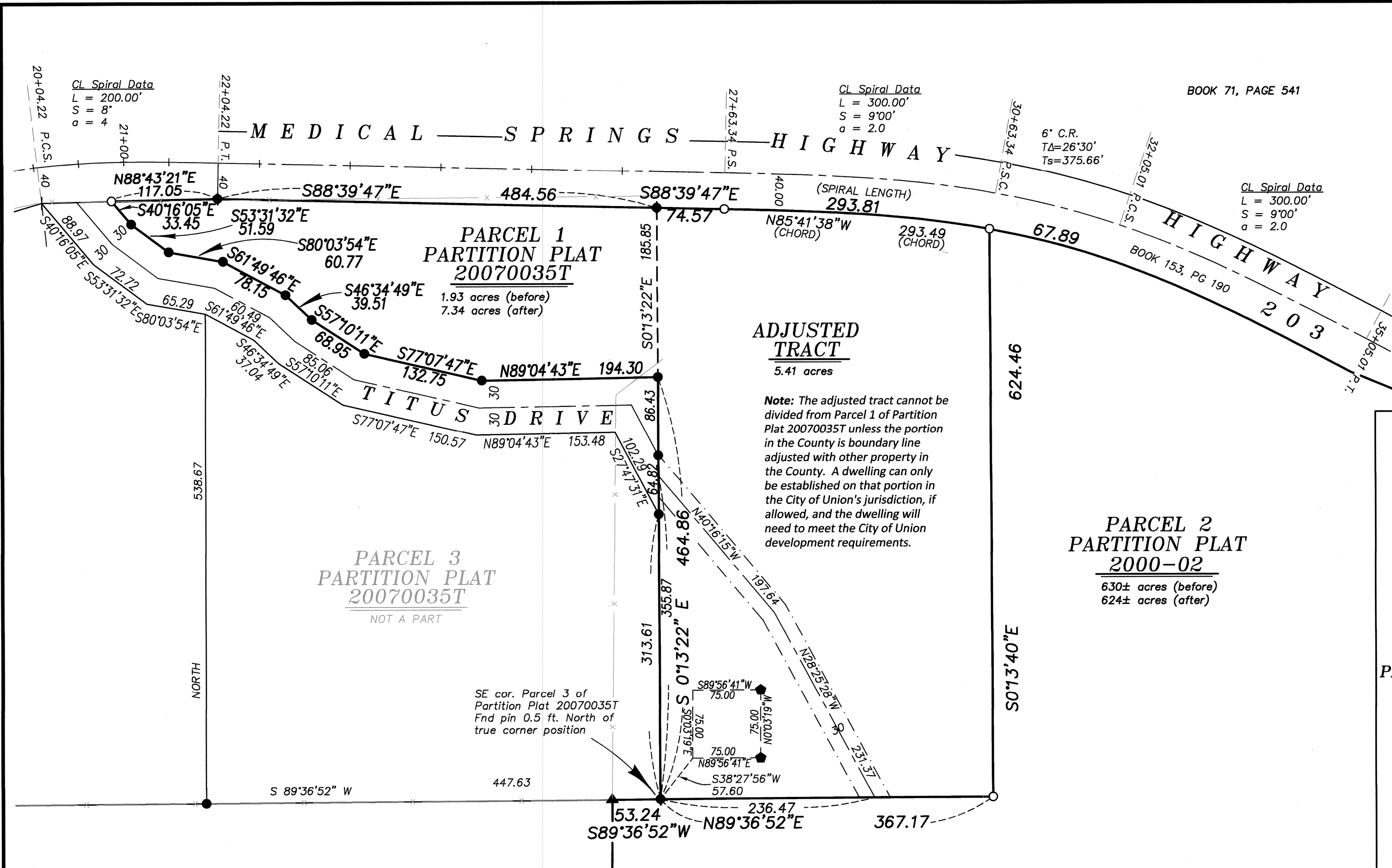
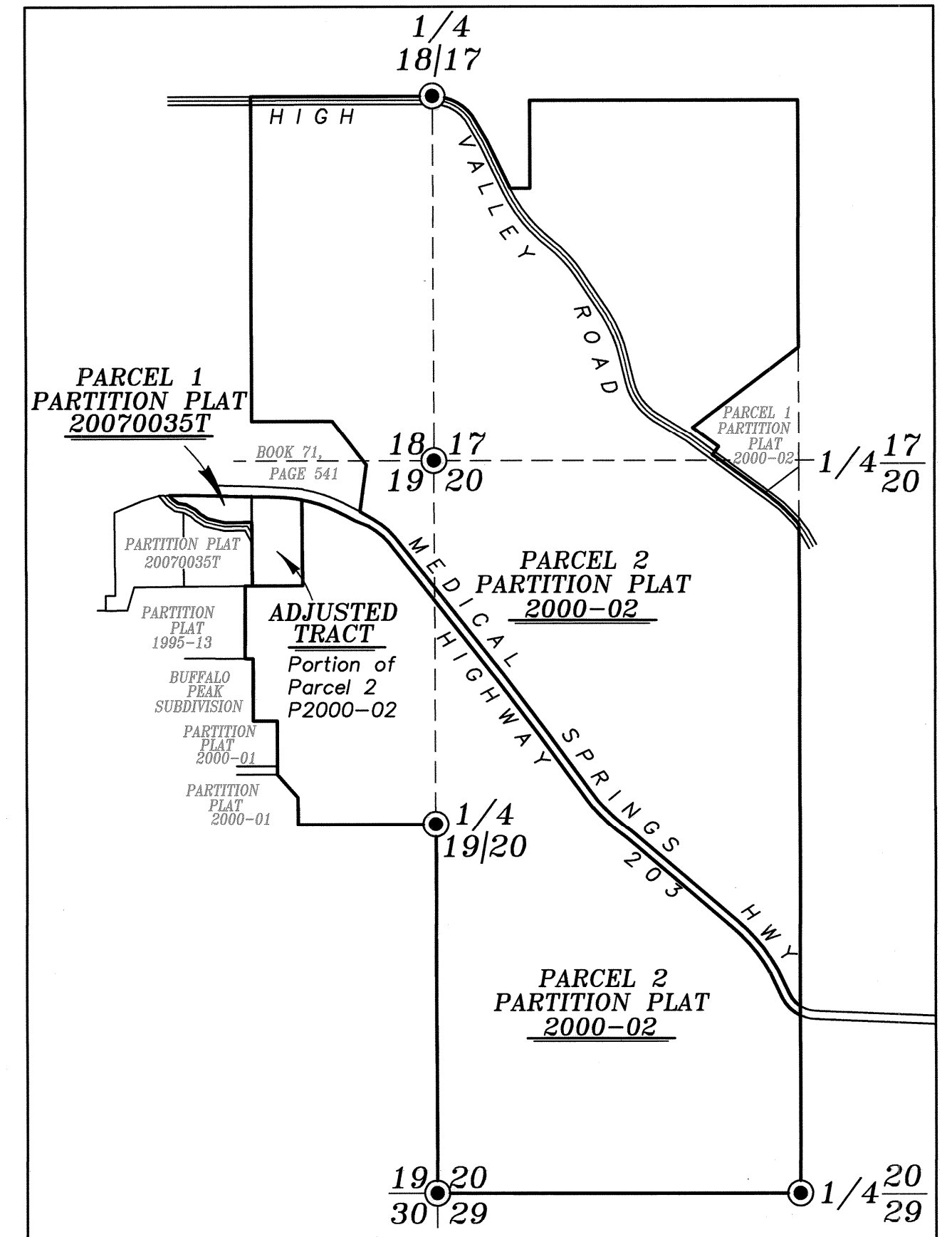
## BASIS OF BEARING

Solar observation taken at the Northwest corner of Section 19, Township 4 South, Range 40 East of the Willamette Meridian.

SCALE: 1"=100'

## VICINITY MAP

SCALE 1"=1000'



## LEGEND

- ▲ Found 5/8" iron pin with plastic cap marked BGB SURVEY MARKER set by Partition Plat 2001-18
- ◆ Found 5/8" iron pin with plastic cap marked BGB SURVEY MARKER set by Survey Number 014-1995
- Found 5/8" iron pin with plastic cap marked BGB SURVEY MARKER set by Partition Plat Number 20070035T
- Found 5/8" iron pin with plastic cap marked STRATTON 1111, set by Survey Number 021-2005
- Set 5/8"x30" iron pin with plastic cap marked BGB SURVEY MARKER
- Centerline
- - - Easement Line
- x - Fenceline
- ⊙ Monument as per Union County Monumentation records, not tied this survey

## REFERENCE MATERIAL

Union County Monumentation Records  
 Survey Number 014-1995  
 Survey Number 021-2005  
 Partition Plat Number 1995-13  
 Partition Plat Number 2000-01  
 Partition Plat Number 2000-02  
 Partition Plat Number 2001-18  
 Partition Plat Number 20070035T  
 Plat of Buffalo Peak Subdivision  
 ODOT Strip Map 8B-30-0002

**DEED REFERENCES**  
 Microfilm Document Number 20060944  
 Microfilm Document Number 20085290  
 Book 153, Page 190  
 Book 71, Page 541

## NARRATIVE

This survey was done at the request of John Collins, realtor representing the owners of the land within. Mr. Collins wanted to adjust the lines as shown hereon. I find monuments set by Partition Plat 20070035T harmonious with plat and accept them in place. I place the alignment of Highway 203 as per ODOT Strip Map 8B-30-0002. Lines for the adjusted tract were placed at the direction of Mr. Collins. Courses for the access road are shown for an easement to the parent tract, to be filed separately. The Northwest corner of Parcel 1 was lost. I replace it at record position. I find no unusual conditions with this survey.

REGISTERED  
 PROFESSIONAL  
 LAND SURVEYOR

*Jeffrey S. Hsu*

OREGON  
 JUNE 2, 2010  
 JEFFREY S. HSU  
 83571

Renewal Date: June 30, 2019

UNION COUNTY  
 SURVEYOR

Date Received 2/15/18  
 Date Filed 2/15/18  
 By *John Collins*  
 File No. 004-2018

**BAGETT, GRIFFITH & BLACKMAN**  
 2006 Adams Avenue, LaGrande, Oregon  
 Map of Survey

Lot Line Adjustment situated in the Northeast quarter of Section 19, Township 4 South, Range 40 East of the Willamette Meridian

UNION COUNTY, OREGON

SURVEYED FOR	John Collins
SURVEYED BY	J. S. H.
Scale: 1" = 100'	Drawn by: J. S. H. Feb. 2018