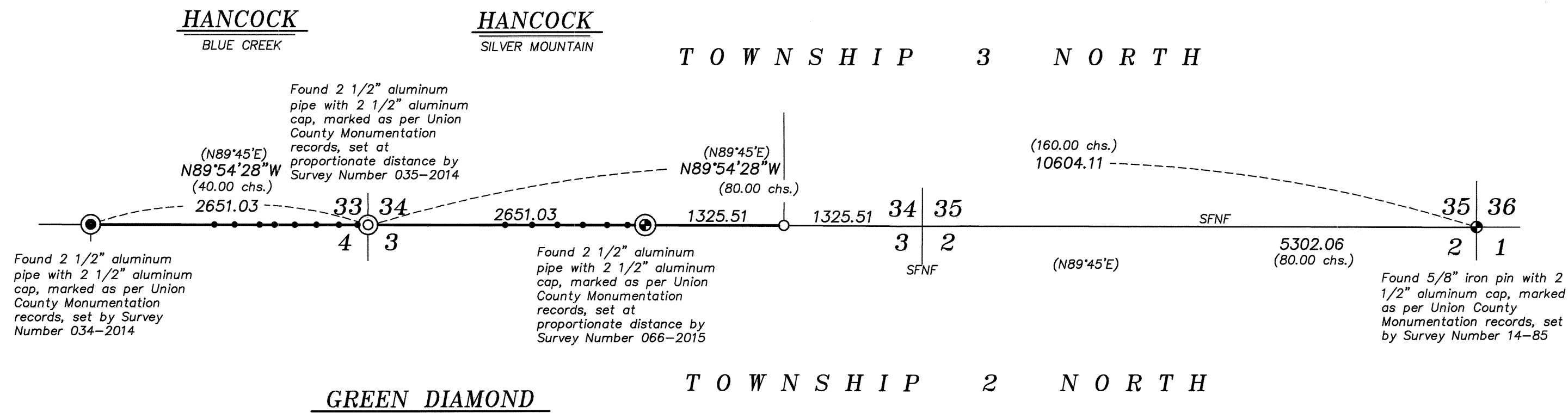


# BASIS OF BEARING

Geodetic North at the Southwest corner of Section 33,  
Township 3 North, Range 39 East of the Willamette  
Meridian, as determined by GPS observation

SCALE: 1"=1000'



## LEGEND

- Found 2 1/2" aluminum pipe with 2 1/2" aluminum cap, set by Survey Number 034-2014
- ⊙ Found 2 1/2" aluminum pipe with 2 1/2" aluminum cap, set by Survey Number 035-2014
- ⊙ Found 2 1/2" aluminum pipe with 2 1/2" aluminum cap, set by Survey Number 066-2015
- ⊙ Found 5/8" iron pin with 2 1/2" aluminum cap, set by Survey Number 14-85
- Set 5/8" iron pin with 2 1/2" aluminum cap, marked as per Union County Monumentation records, filed separately
- ( ) Record measurement as per field notes of GLO contract no. 382, dated March 23, 1881, executed by Rufus S. Moore
- [ ] Record Measurement as per Survey Number 069-2015
- SFNF Corner searched for, not found
- Fence post set on line

## REFERENCE MATERIAL

- Union County Monumentation Records  
 Survey Number 45-82  
 Survey Number 14-85  
 Survey Number 015-2005  
 Survey Number 034-2014  
 Survey Number 035-2014  
 Survey Number 066-2015  
 Survey Number 069-2015
- Field Notes of GLO contract no. 382, dated March 23, 1881, executed by Rufus S. Moore
- DEED REFERENCES  
 Microfilm Document Number 20134272  
 Microfilm Document Number 20134274  
 Microfilm Document Number 20134269  
 Microfilm Document Number 20150861  
 Microfilm Document Number 20164166



UNION COUNTY SURVEYOR	
Date Received	12/21/17
Date Filed	12/21/17
By	<i>[Signature]</i>
File No.	050-2017

## NARRATIVE

This survey was done at the request of Patrick Marolla, on behalf of Hancock Forest Management, land manager for the land within. Mr. Marolla wanted to monument the East 1/16 corner common to section 34 and 3 prior to a timber harvest and to post property lines as shown hereon. I accept position of monuments as per Surveys 034-2014, 035-2014, 066-2015 and 069-2015, as well as the position of the Southeast corner of Section 34. I place the sixteenth corner as per BLM Manual of Instructions 2009. I find no unusual conditions with this survey.

<b>BAGETT, GRIFFITH &amp; BLACKMAN</b> 2006 Adams Avenue, LaGrande, Oregon Map of Survey	
Situate in Sections 3 and 4 Township 2 North, and Section 33 and 34, Township 3 North, Range 39 East of the Willamette Meridian	
UNION COUNTY, OREGON	
SURVEYED FOR	Hancock Forest Management
SURVEYED BY	J. S. H.
Scale: 1" = 1000'	Drawn by: J. S. H. December 2017

SURVEY NUMBER 050-2017