

LOT LINE ADJUSTMENT

BASIS OF BEARING

Solar observation taken at the Northwest corner of Section 19, Township 4 South, Range 40 East of the Willamette Meridian.

SCALE: 1" = 30'

LEGEND

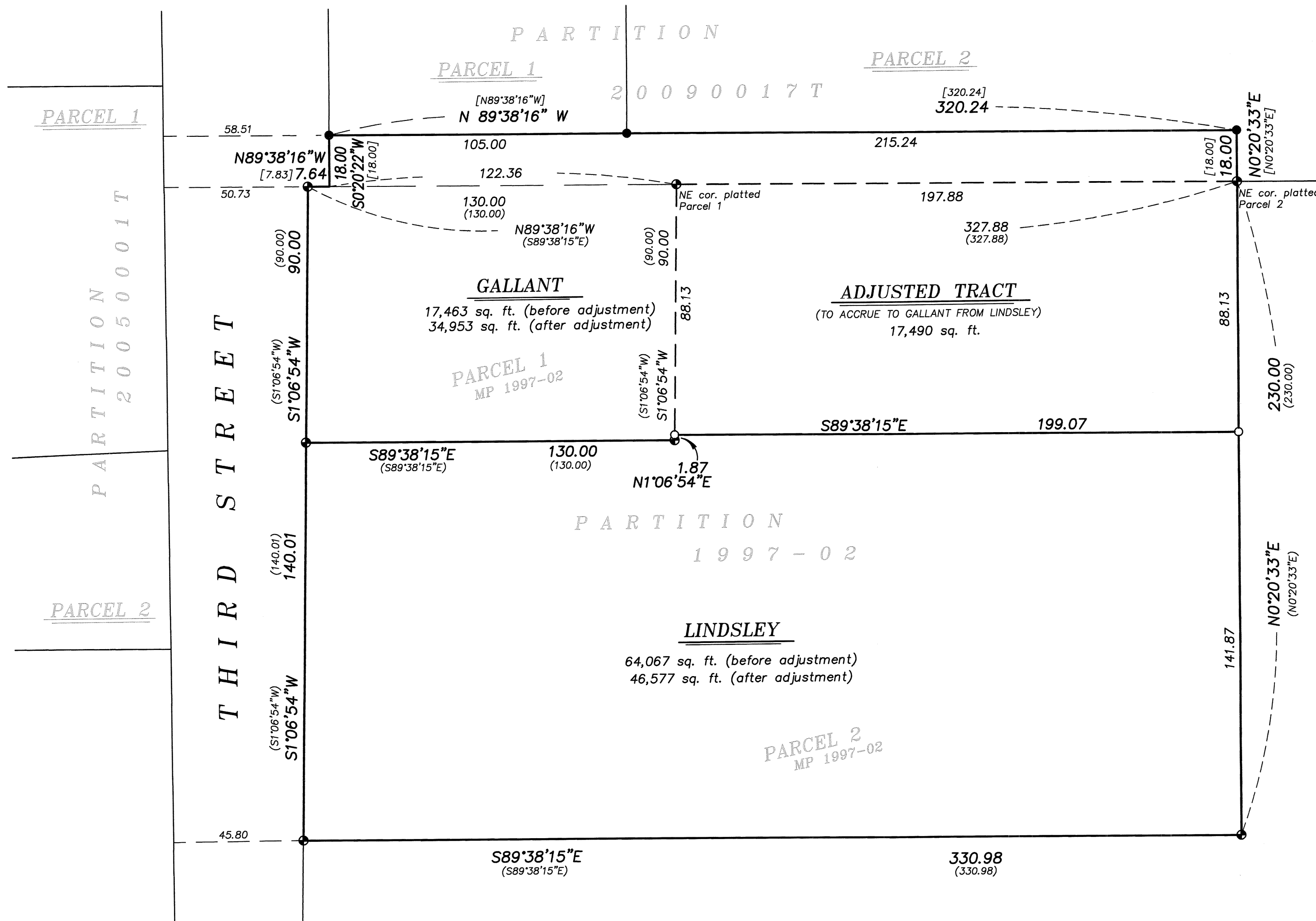
- Found 5/8" iron pin with plastic cap marked BGB SURVEY MARKER, set by Partition Plat Number 20090017T
- ⊙ Found 5/8" iron pin with plastic cap marked "LS 1952" set by Partition Plat Number 1997-02
- Set 5/8"x30" iron pin marked "BGB SURVEY MARKER"
- ( ) Record measurement as per Partition Plat Number 1997-02
- [ ] Record measurement as per Partition Plat Number 20090017T

REFERENCE MATERIAL

Union County Monumentation Records  
Partition Plat Number 1997-02  
Partition Plat Number 20090017T

DEED REFERENCES

Microfilm Document Number 995236  
Microfilm Document Number 20072921  
Microfilm Document Number 20151390



NARRATIVE

This survey was done at the request of Sharron Langdon, real estate representative for the owner of the land within. Ms. Langdon wanted to adjust the lines as shown hereon. I recover the monuments set by Partitions 1997-02 and 20090017T and find them harmonious with record measurements. As mentioned in the narrative for Partition 20090017T, Third Street was created by omission from the properties surrounding, creating an irregular width as well as a jog at the North line of Partition 1997-02. I place the new line at the direction of the landowner, while ensuring a 5 foot minimum setback from the accessory buildings. I find no unusual conditions with this survey.

REGISTERED  
PROFESSIONAL  
LAND SURVEYOR

*[Signature]*

OREGON  
JUNE 2, 2010  
JEFFREY S. HSU  
83571

Renewal Date: June 30, 2019

UNION COUNTY  
SURVEYOR

Date Received 11/16/17

Date Filed 11/16/17

By *[Signature]*

File No. 047-2017

<b>BAGETT, GRIFFITH &amp; BLACKMAN</b> 2006 Adams Avenue, LaGrande, Oregon Map of Survey		
Situate in the Southwest quarter of Section 19, Township 4 South, Range 40 East of the Willamette Meridian, City of Union		
UNION COUNTY, OREGON		
SURVEYED FOR	Sharron Langdon	
SURVEYED BY	J. S. H.	
Scale: 1" = 30'	Drawn by: J. S. H.	Nov. 2017

SURVEY NUMBER 047-2017