

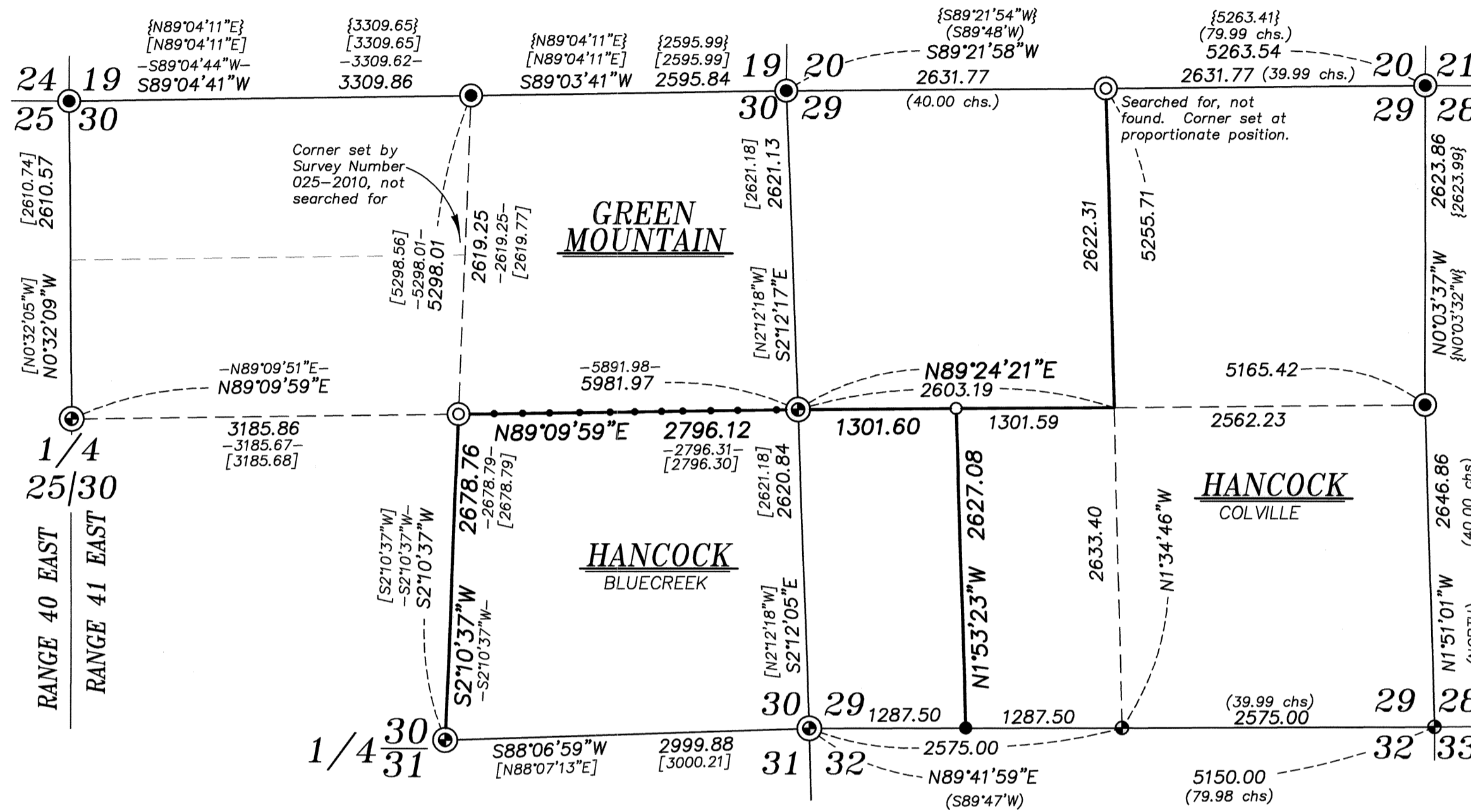
# BASIS OF BEARING

The North/South Centerline of Section 30 being North 2°10'37" East, as per Survey Number 29-88, as filed in the office of the Union County Surveyor

SCALE: 1" = 1000'

## LEGEND

- Found 2 1/2" aluminum pipe with 2 1/2" aluminum cap marked as per Union County Monumentation records, set by Survey Number 31-86
- ⊙ Found 2 1/2" aluminum pipe with 2 1/2" aluminum cap marked as per Union County Monumentation records, set by Survey Number 29-88
- ⊕ Found 2 1/2" aluminum pipe with 2 1/2" aluminum cap marked as per Union County Monumentation records, set by Survey Number 031-2012
- Found 5/8" iron pin with 2 1/2" aluminum cap, marked as per Union County monumentation records, set by Survey number 031-2012
- ⊙ Set 2 1/2" aluminum pipe with 2 1/2" aluminum cap marked as per Union County Monumentation Records
- Set 5/8" x 30" iron pin with 2 1/2" aluminum cap marked as per Union County Monumentation Records
- ( ) Record measurement as per Field Notes of GLO Contract No. 320, by H.M. Thatcher, dated April 1, 1879
- [ ] Record measurement of Survey Number 29-88
- { } Record measurement of Survey Number 31-86
- - Record measurement of Survey Number 025-2010
- Steel fencepost set on line



### REFERENCE MATERIAL

Field notes of GLO Contract Number 320, dated April 1, 1879, surveyed by H.M. Thatcher

Survey Number 31-86  
 Survey Number 29-88  
 Survey Number 025-2010  
 Survey Number 031-2012

DEED REFERENCES  
 Microfilm Document Number 20134270  
 Microfilm Document Number 20134274  
 Microfilm Document Number 20164166

### NARRATIVE

This survey was done at the request of Patrick Marolla on behalf of Hancock Forest Management, land manager of the land within. Mr. Marolla wanted select monuments set and lines posted prior to logging. I find monuments set by Surveys 29-88 and 31-86 in position and harmonious with record measurements. I make a search for the North quarter corner of Section 29, but find no remaining evidence of the original GLO corner. I place this at proportionate position. Break of the sections was done as per BLM Manual of Instructions 2009. I find no unusual conditions with this survey.

REGISTERED  
 PROFESSIONAL  
 LAND SURVEYOR

*[Signature]*

OREGON  
 JUNE 2, 2010  
 JEFFREY S. HSU  
 83571

Renewal Date: June 30, 2019

UNION COUNTY  
 SURVEYOR

Date Received 8/16/17

Date Filed 8/16/17

By *[Signature]*

File No. 035-2017

|  |                           |             |
|--|---------------------------|-------------|
| <b>BAGETT, GRIFFITH &amp; BLACKMAN</b><br>2006 Adams Avenue, LaGrande, Oregon<br>Map of Survey |                           |             |
| Situated in Sections 29 and 30, Township 4 South,<br>Range 41 East of the Willamette Meridian  |                           |             |
| UNION COUNTY, OREGON   |                           |             |
| SURVEYED FOR   | Hancock Forest Management |             |
| SURVEYED BY  | J. S. H.                  |             |
| Scale: 1" = 1000'  | Drawn by: J. S. H.        | August 2017 |

SURVEY NUMBER 035-2017