

**GEODETIC COORDINATES**

POINT	LATITUDE	LONGITUDE
A	45°16'28.0425" N	118°24'29.2448" W
B	45°16'29.3186" N	118°24'28.3934" W
C	45°16'30.4289" N	118°24'27.6496" W
D	45°16'31.4964" N	118°24'27.2092" W
E	45°16'31.8106" N	118°24'28.4109" W
F	45°16'31.0242" N	118°24'29.0008" W
G	45°16'29.9975" N	118°24'30.1911" W
H	45°16'28.6131" N	118°24'31.1836" W
I	45°16'28.0204" N	118°24'29.8401" W

**BUILDING ENVELOPE LEGAL DESCRIPTION**

Situate in the Northwest quarter of Section 26 and the East half of Section 27, Township 3 South, Range 35 East of the Willamette Meridian, Union County, Oregon, more particularly described as follows with reference to Survey Number 019-2017, as filed in the office of the Union County Surveyor,

Beginning at a point from which the quarter corner common to said Section 26 and 27 bears North 74°30'30" East, a distance of 128.54 feet,

Thence: North 25°13'27" East, a distance of 142.89 feet,

Thence: North 25°18'59" East, a distance of 124.43 feet,

Thence: North 16°14'14" East, a distance of 112.64 feet,

Thence: North 69°40'53" West, a distance of 91.65 feet,

Thence: South 27°54'26" West, a distance of 90.15 feet,

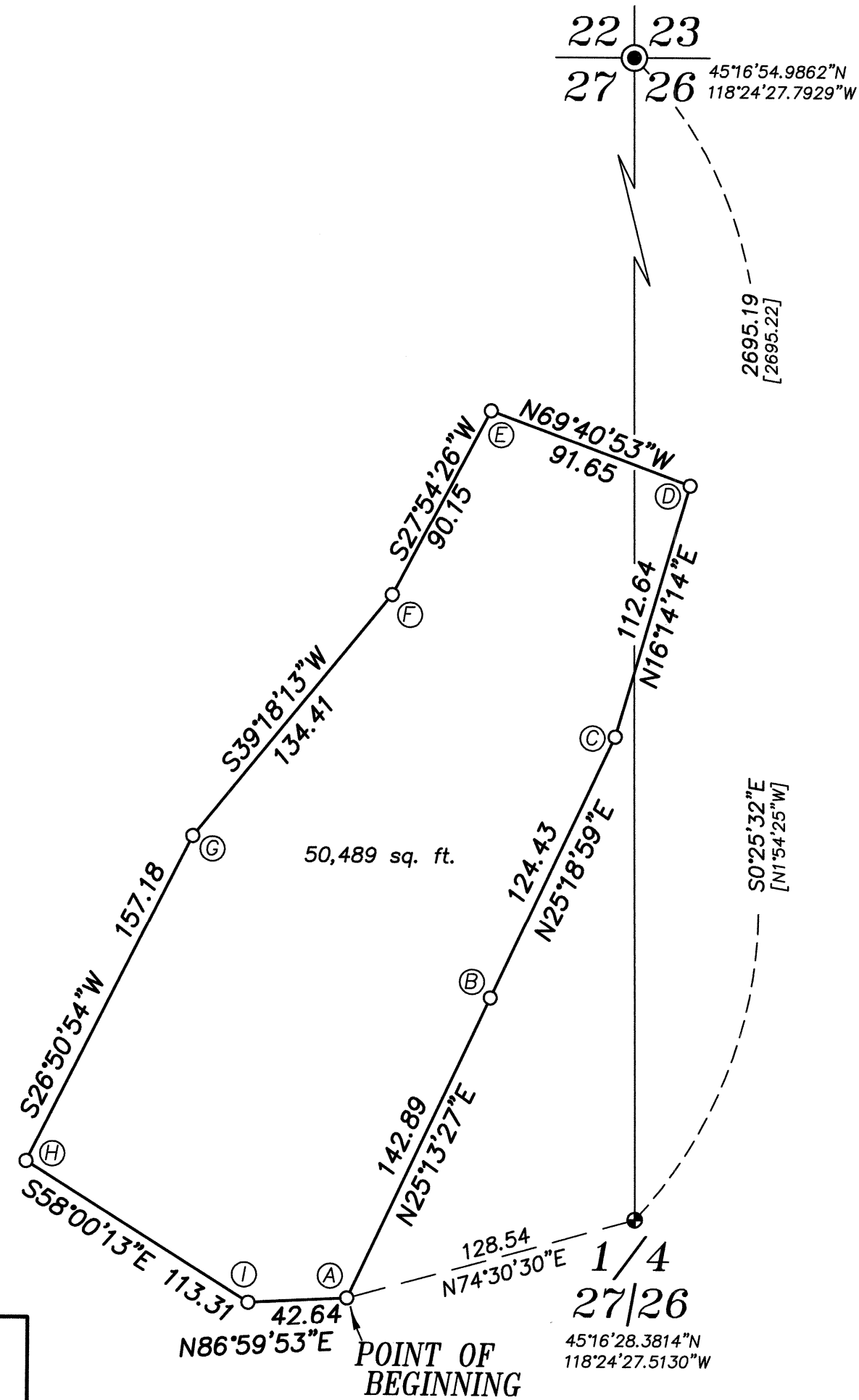
Thence: South 39°18'13" West, a distance of 134.41 feet,

Thence: South 26°50'54" West, a distance of 157.18 feet,

Thence: South 58°00'13" East, a distance of 113.31 feet,

Thence: North 86°59'53" East, a distance of 42.64 feet, to the Point of Beginning of this description.

Containing 50,489 sq. ft.



**BASIS OF BEARING**

True Geodetic North taken at the corner common to Sections 22, 23, 26 and 27, Township 3 South, Range 35 East of the Willamette Meridian, as determined by GPS observation

**SCALE: 1" = 60'**

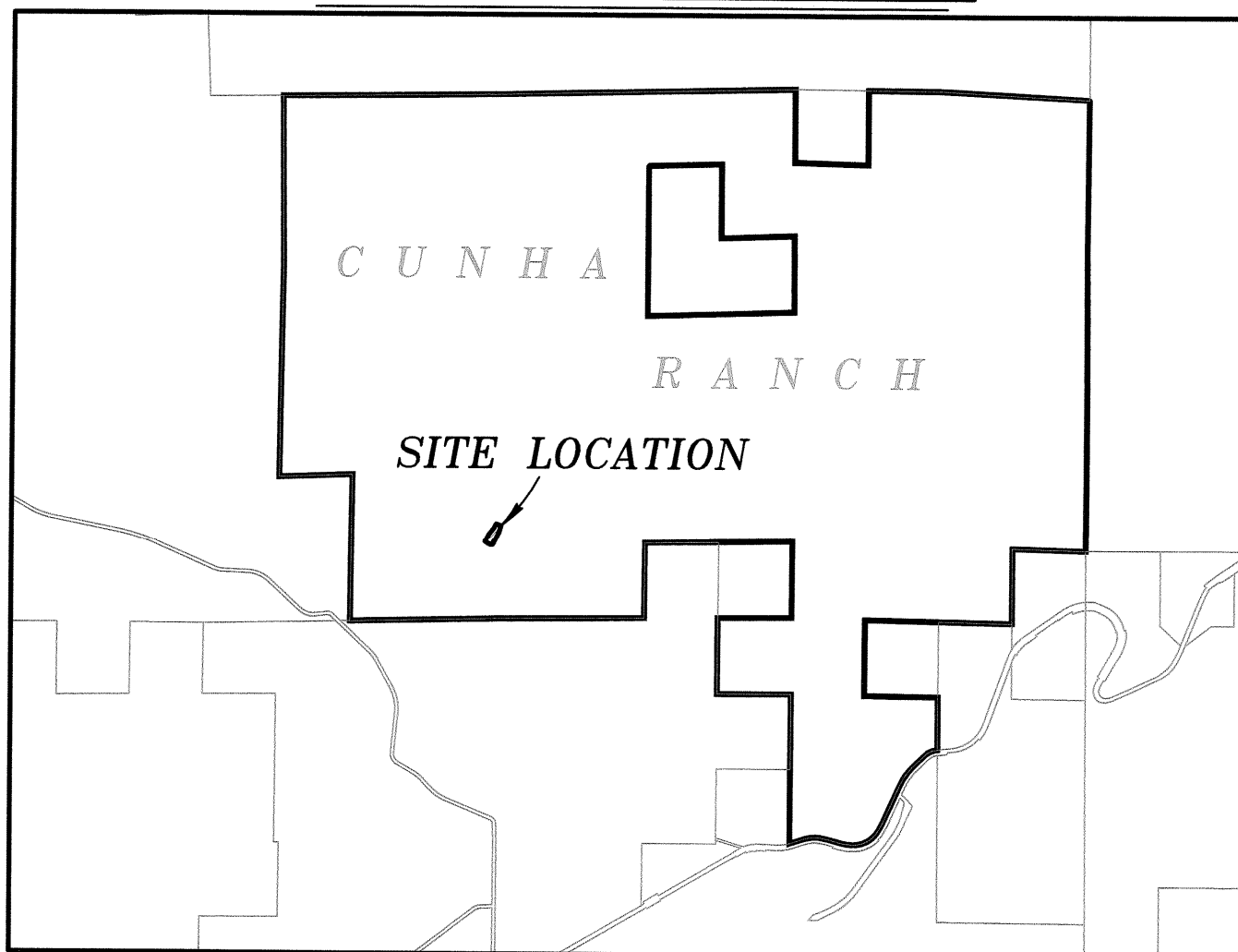
**LEGEND**

- Found 2 1/2" aluminum pipe with 2 1/2" aluminum cap, marked as per Union County Monumentation record 089-1993R
- Found 5/8" iron pin with plastic cap marked TLS-HDR, set by Survey Number 059-2013
- Set 5/8"x30" iron pin with plastic cap marked BGB SURVEY MARKER
- [ ] Record measurement as per Survey Number 059-2013

**REFERENCE MATERIAL**

Union County Monumentation Records  
 Survey Number 011-1999  
 Survey Number 059-2013  
 Survey Number 026-2014

**VICINITY MAP NOT TO SCALE**



**NARRATIVE**

This survey was done at the request of Jason Bulay of the Blue Mountain Land Trust. The purpose of this survey is to define an area to be excluded from a pending conservation easement. I place the pins in the direction of Mr. Bulay. Geodetic coordinates shown hereon are NAD-83(1991) horizontal datum. I find no unusual conditions with this survey.

UNION COUNTY SURVEYOR  
 Date Received 6/5/17  
 Date Filed 6/5/17  
 By [Signature]  
 File No. 019-2017

REGISTERED PROFESSIONAL LAND SURVEYOR  
 [Signature]  
 OREGON JUNE 2, 2010  
 JEFFREY S. HSU  
 83571  
 Renewal Date: June 30, 2019

**BAGETT, GRIFFITH & BLACKMAN**  
 2006 Adams Avenue, LaGrande, Oregon  
 Map of Survey  
 Situate in Sections 26 and 27, Township 3 South, Range 35 East of the Willamette Meridian  
 UNION COUNTY, OREGON  
 SURVEYED FOR Blue Mountain Land Trust  
 SURVEYED BY J. S. H.  
 Scale: 1" = 60' Drawn by: J. S. H. June 2017