

BASIS OF BEARING

Solar observation taken at the Southwest corner of Section 15, Township 3 South, Range 40 East of the Willamette Meridian.

SCALE: 1"=60'

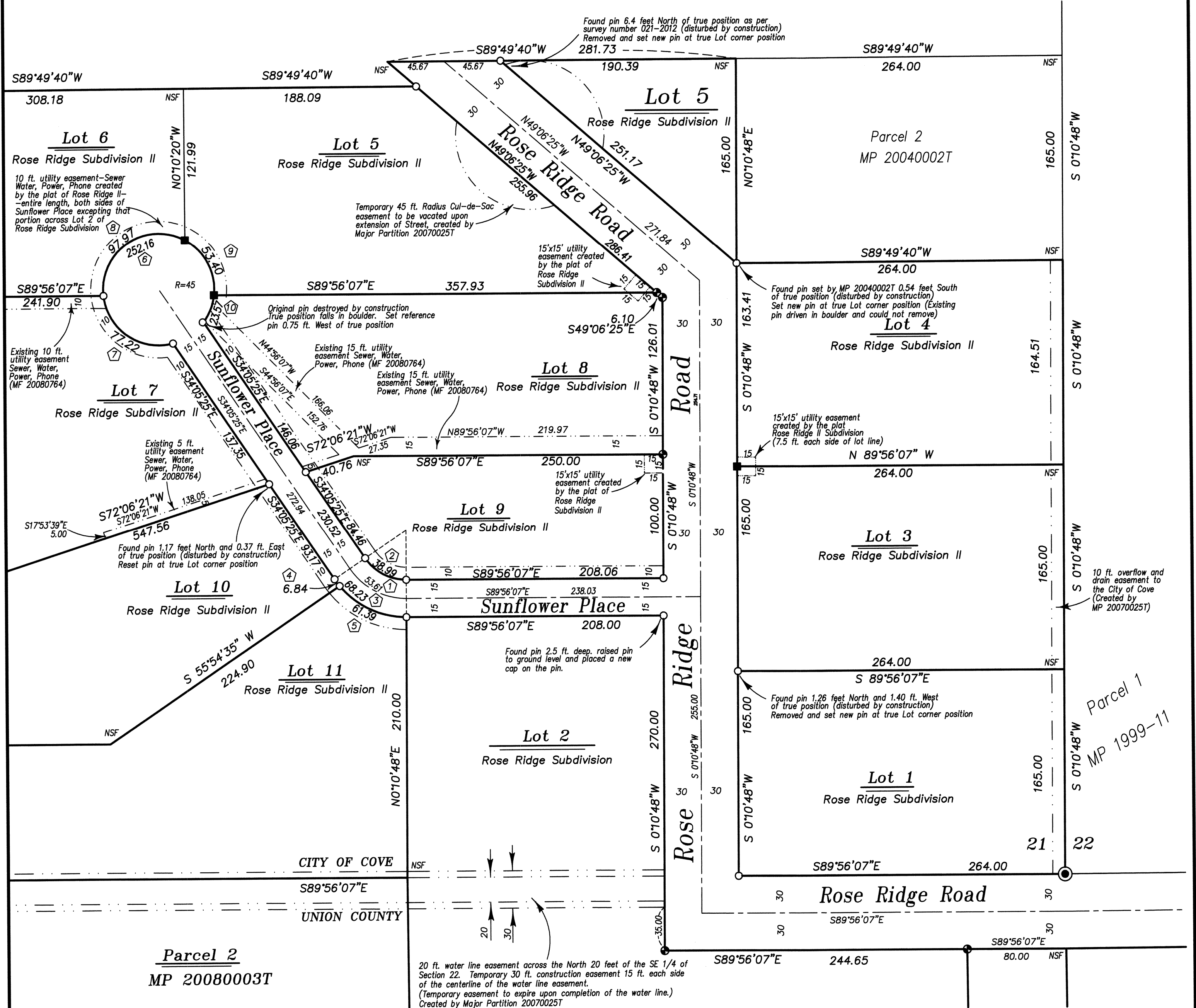
REFERENCE MATERIAL

Union County Monumentation Records
 Survey Number 005-2008
 Survey Number 031-2008
 Survey Number 021-2012
 Minor Partition Plat Number 1998-20
 Minor Partition Plat Number 1999-11
 Minor Partition Plat Number 2001-02
 Minor Partition Plat Number 20040002T
 Minor Partition Plat Number 20070025T
 Minor Partition Plat Number 20080003T
 Plat of Rose Ridge Subdivision II

DEED REFERENCES
 Microfilm Number 120832
 Microfilm Number 20020057
 Microfilm Number 20030246
 Microfilm Number 20050211-20050016
 Microfilm Number 20072979-20072980
 Microfilm Number 20080764

LEGEND

- Found brass disk set in concrete as per Union County Monumentation Records
- Found 5/8" iron pin with plastic cap marked "BGB SURVEY MARKER" set by the plat of Rose Ridge Subdivision II
- Found 5/8" iron pin with plastic cap marked "BGA SURVEY MARKER" set by Major Partition Plat Number 20070025T
- Set 5/8"x30" iron pin with plastic cap marked "BGB SURVEY MARKER"
- Easement line
- Centerline
- NSF Corner not searched for



CURVE DATA

<p>① Centerline Curve Midway Sunflower $\Delta = 55^{\circ}04'41''$ $R = 55.00'$ $L = 53.61'$ $T = 29.15'$ $L.C. = 51.51'$ $N 62^{\circ}00'46''W$</p>	<p>② North R/W Curve Midway Sunflower $\Delta = 55^{\circ}50'41''$ $R = 45.00'$ $L = 38.99'$ $T = 21.20'$ $L.C. = 37.46'$ $N 62^{\circ}00'46''W$</p>	<p>③ South R/W Curve Midway Sunflower $\Delta = 55^{\circ}50'41''$ $R = 45.00'$ $L = 38.99'$ $T = 21.20'$ $L.C. = 37.46'$ $N 62^{\circ}00'46''W$</p>	<p>④ South R/W Curve Sunflower Lot 10 $\Delta = 5^{\circ}36'01''$ $R = 70.00'$ $L = 6.84'$ $T = 3.42'$ $L.C. = 6.84'$ $N 36^{\circ}53'26''W$</p>	<p>⑤ South R/W Curve Sunflower Lot 11 $\Delta = 50^{\circ}14'40''$ $R = 70.00'$ $L = 61.39'$ $T = 32.82'$ $L.C. = 37.46'$ $N 64^{\circ}48'47''W$</p>
<p>⑥ Total Cul de sac Sunflower Place $\Delta = 321^{\circ}03'27''$ $R = 45.00'$ $L = 252.16'$ $T = 15.91'$ $L.C. = 30.00'$ $S 55^{\circ}54'35''W$</p>	<p>⑦ Lot 7 Cul de sac Sunflower Place $\Delta = 98^{\circ}19'20''$ $R = 45.00'$ $L = 77.22'$ $T = 52.06'$ $L.C. = 68.09'$ $N 55^{\circ}27'29''W$</p>	<p>⑧ Lot 6 de sac Sunflower Place $\Delta = 124^{\circ}44'06''$ $R = 45.00'$ $L = 97.97'$ $T = 85.96'$ $L.C. = 79.73'$ $N 56^{\circ}04'15''E$</p>	<p>⑨ Lot 5 Cul de sac Sunflower Place $\Delta = 67^{\circ}59'18''$ $R = 45.00'$ $L = 53.40'$ $T = 30.35'$ $L.C. = 50.32'$ $S 27^{\circ}34'04''E$</p>	<p>⑩ Lot 8 Cul de sac Sunflower Place $\Delta = 30^{\circ}00'43''$ $R = 45.00'$ $L = 23.57'$ $T = 12.06'$ $L.C. = 23.30'$ $S 21^{\circ}25'57''W$</p>

NARRATIVE

This survey was done at the request of John Robinson. The purpose of this survey is to reset the monuments along Rose Ridge Road and Sunflower Place which were destroyed or moved during the construction phase of the development. I recovered the existing monuments in place as shown and replaced the destroyed monuments at record position. There were several monuments which had been moved during construction. On those monuments, I note the position of where the pins were found and set a new pin in the proper position, removing the erroneous pin. The focus was along the roadway and the interior pins were not searched for. I find no other unusual conditions on this survey.

REGISTERED
**PROFESSIONAL
 LAND SURVEYOR**

 OREGON
 JULY 17, 1986
**RICK G. ROBINSON
 2219**
 Renewal Date: Dec. 31, 2018

UNION COUNTY
 SURVEYOR
 Date Received 3/16/17
 Date Filed 3/16/17
 By
 File No. 005-2017

BAGETT, GRIFFITH & BLACKMAN
 2006 Adams Avenue, LaGrande, Oregon
 Map of Survey
 Remonumentation of selected corners of Lots 1 and 2 of Rose Ridge Subdivision and Lots 3 through 11 of Rose Ridge Subdivision II, being situate in the Northwest quarter of Section 21, Township 3 South, Range 40 East of the Willamette Meridian
 UNION COUNTY, OREGON

SURVEYED FOR	John Robinson	
SURVEYED BY	R.G.R.	3/17
Scale: 1" = 60'	Drawn by: R.G.R.	3/17