

PROPERTY LINE ADJUSTMENT  
 GOVERNMENT LOT 3, SECTION 30  
 TOWNSHIP 2 SOUTH, RANGE 37 EAST  
 WILLAMETTE MERIDIAN  
 UNION COUNTY, OREGON



PVT

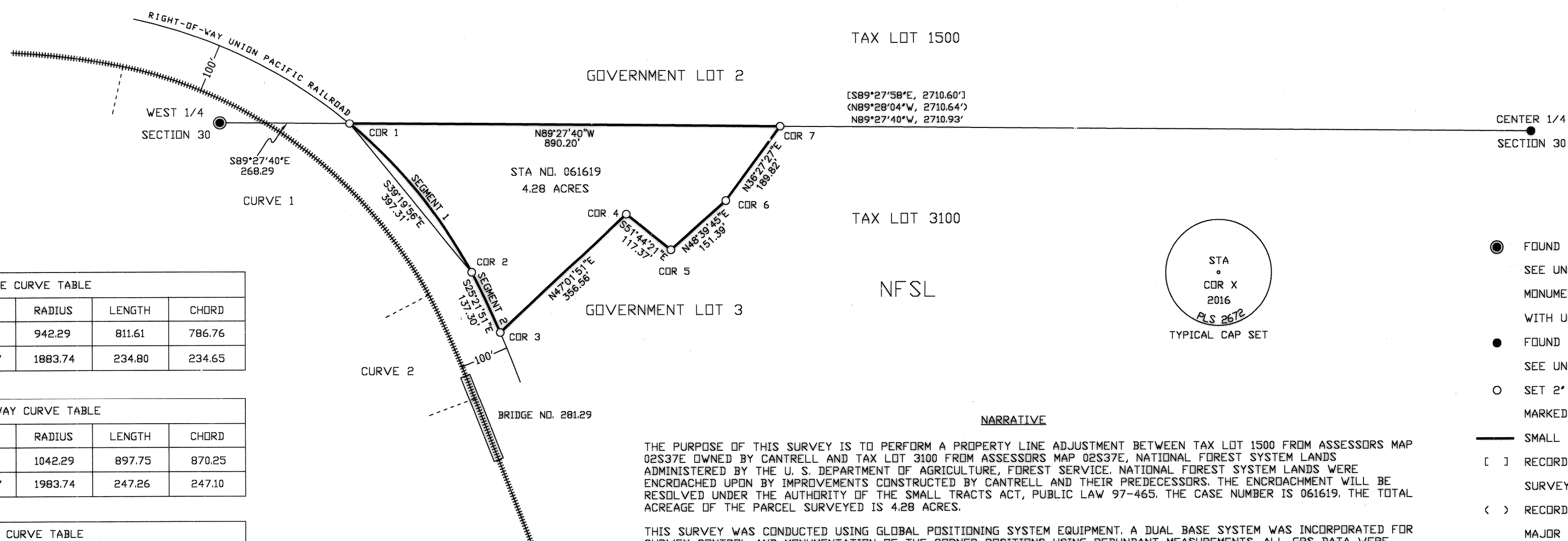
TAX LOT 1500

GOVERNMENT LOT 2

TAX LOT 3100

NFSL

GOVERNMENT LOT 3



CENTERLINE CURVE TABLE					
CURVE	DEGREE	DELTA	RADIUS	LENGTH	CHORD
1	6°05'	49°21'	942.29	811.61	786.76
2	3°02'30"	7°08'30"	1883.74	234.80	234.65

RIGHT-OF-WAY CURVE TABLE					
CURVE	DEGREE	DELTA	RADIUS	LENGTH	CHORD
1	5°29'57"	49°21'	1042.29	897.75	870.25
2	2°53'19"	7°08'30"	1983.74	247.26	247.10

SEGMENT CURVE TABLE					
SEGMENT	DEGREE	DELTA	RADIUS	LENGTH	CHORD
1	5°29'57"	21°58'30"	1042.29	399.76	397.31
2	2°53'19"	3°57'59"	1983.74	137.33	137.30

DESCRIPTION

A PARCEL OF LAND LOCATED IN GOVERNMENT LOT 3 OF SECTION 30, TOWNSHIP 2 SOUTH, RANGE 37 EAST OF THE WILLAMETTE MERIDIAN IN UNION COUNTY, OREGON. MORE PARTICULARLY DESCRIBED AS FOLLOWS:

COMMENCING AT THE WEST 1/4 OF SECTION 30, WHICH IS A 2 1/2" ALUMINUM CAPPED MONUMENT STAMPED DPLS 644, 1989 DESCRIBED ON UNION COUNTY SURVEY NUMBER 26-89;

THENCE SOUTH 89°27'40" EAST ON THE EAST-WEST CENTERLINE OF SECTION 30, A DISTANCE OF 268.29 FEET TO A 2" ALUMINUM CAP ON A 5/8" X 30" REBAR, STAMPED STA CDR 1, PLS 2672, 2016, THE TRUE POINT OF BEGINNING;

THENCE ALONG THE RIGHT-OF-WAY OF THE UNION PACIFIC RAILROAD ON A 1042.29 FOOT RADIUS CURVE RIGHT, A DISTANCE OF 399.76 FEET, THE LONG CHORD OF WHICH BEARS SOUTH 39°19'56" EAST, 397.31 FEET TO A 2" ALUMINUM CAP ON A 5/8" X 30" REBAR, STAMPED STA CDR 2, PLS 2672, 2016;

THENCE CONTINUING ALONG THE RIGHT-OF-WAY OF THE UNION PACIFIC RAILROAD ON A 1983.74 FOOT RADIUS CURVE RIGHT, A DISTANCE OF 137.33 FEET, THE LONG CHORD OF WHICH BEARS SOUTH 25°21'51" EAST, 137.30 FEET TO A 2" ALUMINUM CAP ON A 5/8" X 30" REBAR, STAMPED STA CDR 3, PLS 2672, 2016;

THENCE NORTH 47°01'51" EAST, A DISTANCE OF 356.56 FEET TO A 2" ALUMINUM CAP ON A 5/8" X 30" REBAR, STAMPED STA CDR 4, PLS 2672, 2016;

THENCE SOUTH 51°44'21" EAST, A DISTANCE OF 117.37 FEET TO A 2" ALUMINUM CAP ON A 5/8" X 30" REBAR, STAMPED STA CDR 5, PLS 2672, 2016;

THENCE NORTH 48°39'45" EAST, A DISTANCE OF 151.39 FEET TO A 2" ALUMINUM CAP ON A 5/8" X 30" REBAR, STAMPED STA CDR 6, PLS 2672, 2016;

THENCE NORTH 36°27'27" EAST, A DISTANCE OF 189.82 FEET TO A POINT ON THE EAST-WEST CENTERLINE OF SECTION 30 MARKED WITH A 2" ALUMINUM CAP ON A 5/8" X 30" REBAR, STAMPED STA CDR 7, PLS 2672, 2016;

THENCE NORTH 89°27'40" WEST ON THE EAST-WEST CENTERLINE OF SECTION 30, A DISTANCE OF 890.20 FEET TO THE POINT OF BEGINNING, CONTAINING 4.28 ACRES OF LAND.

BASIS OF BEARING

THE BASIS OF BEARING IS THE TRUE MERIDIAN AND WAS DERIVED FROM GPS OBSERVATIONS. LOCAL PLANE COORDINATES WERE CALCULATED ON A FALSE MERIDIAN AND ZERO CONVERGENCE ANGLE AT THE WEST 1/4 CORNER OF SECTION 30, THEN CONVERTED TO GROUND BEARING AND DISTANCE WITH AN AVERAGE PROJECT SCALE FACTOR OF 1.0002416487.

I CERTIFY THAT THIS SURVEY WAS PERFORMED AT THE REQUEST OF THE WALLOWA-WHITMAN NATIONAL FOREST.

*Thomas Montoya* 1/24/17  
 FOREST SUPERVISOR DATE

NARRATIVE

THE PURPOSE OF THIS SURVEY IS TO PERFORM A PROPERTY LINE ADJUSTMENT BETWEEN TAX LOT 1500 FROM ASSESSORS MAP 02S37E OWNED BY CANTRELL AND TAX LOT 3100 FROM ASSESSORS MAP 02S37E, NATIONAL FOREST SYSTEM LANDS ADMINISTERED BY THE U. S. DEPARTMENT OF AGRICULTURE, FOREST SERVICE. NATIONAL FOREST SYSTEM LANDS WERE ENCRDACHED UPON BY IMPROVEMENTS CONSTRUCTED BY CANTRELL AND THEIR PREDECESSORS. THE ENCRDACHMENT WILL BE RESOLVED UNDER THE AUTHORITY OF THE SMALL TRACTS ACT, PUBLIC LAW 97-465. THE CASE NUMBER IS 061619. THE TOTAL ACREAGE OF THE PARCEL SURVEYED IS 4.28 ACRES.

THIS SURVEY WAS CONDUCTED USING GLOBAL POSITIONING SYSTEM EQUIPMENT. A DUAL BASE SYSTEM WAS INCORPORATED FOR SURVEY CONTROL AND MONUMENTATION OF THE CORNER POSITIONS USING REDUNDANT MEASUREMENTS. ALL GPS DATA WERE DOWNLOADED INTO TRIMBLE BUSINESS CENTER SOFTWARE AND CORRECTED USING OPUS.

TWO RAILROAD CENTERLINE AND RIGHT-OF-WAY MAPS WERE OBTAINED FROM UNION PACIFIC RAILROAD HEADQUARTERS IN KANSAS CITY, MISSOURI AND A RIGHT-OF-WAY AND TRACK MAP FROM THE OREGON ASSOCIATION OF COUNTY SURVEYORS WEBSITE. NONE OF THE MAPS HAD ANY TIES FROM THE RAILROAD TO THE PLSS. THE MAPS HAD DIFFERING CURVE DATA ON THEM, BUT IT MATCHED EXACTLY FOR THE TWO COMPOUND CURVES USED IN THIS SURVEY. ALL CURVE COMPUTATIONS USED THE CHORD DEFINITION. THE RAILROAD MAPS HAD CENTERLINE STATIONING AND THE DELTA ANGLE AND DEGREE OF CURVE TO DEFINE THE CURVES. THE EXCEPTION TO THIS WAS THE SOUTHERLY COMPOUND CURVE (CURVE 2) WHICH LISTED ONLY CENTERLINE STATIONING AND THE DELTA ANGLE. CENTERLINE STATIONING WAS USED TO CALCULATE THE LENGTH OF CURVE 2. THIS AND THE GIVEN DELTA ANGLE WAS USED TO CALCULATE THE REMAINING CURVE DATA. THE CENTERLINE OF THE EXISTING TRACKS WAS SURVEYED THROUGH FOUR COMPOUND CURVES AND PORTIONS OF THE TANGENTS ON EACH END.

THE ONLY MONUMENT FOUND FROM THE ORIGINAL RAILROAD SURVEYS WAS BRIDGE NUMBER 28129. THE BRIDGE HAD A MANUFACTURE DATE OF 1910 ON TWO PLACARDS. WRITING WAS FOUND ON THE BRIDGE IN OLD PAINT. THERE WAS "PT" WRITTEN ON THE BRIDGE WITH AN "X" TO MEASURE FROM AND AN OFFSET DISTANCE TO THE CENTER OF THE TRACKS. THIS WAS USED AS THE PT OF CURVE 2. THE CURVE WAS LOCATED ON THE EXISTING TRACK CENTERLINE USING THE CALCULATED CHORD DISTANCE TO ESTABLISH THE PC OF CURVE 2, WHICH IS ALSO THE PT OF CURVE 1. THE COMPOUND CURVES WERE CREATED BETWEEN THE PC'S AND PT'S USING THE GIVEN CURVE DATA FROM THE RAILROAD MAPS (WITH THE EXCEPTION MENTIONED ABOVE). THE CALCULATED BEST FIT COMPOUND CURVES MATCHED THE EXISTING CENTERLINE OF THE TRACKS WITHIN ONE FOOT. THE RAILROAD RIGHT-OF-WAY WAS ESTABLISHED BY OFFSETTING 100 FEET FROM THE TWO BEST FIT CENTERLINE COMPOUND CURVES.

THE NEW BOUNDARY LINE WAS MARKED WITH ALUMINUM POSTS AND NATIONAL FOREST BOUNDARY SIGNS. THE FORMER BOUNDARY LINE POSTS WERE REMOVED.

I, KENNETH A. LIND, A PROFESSIONAL LAND SURVEYOR IN THE STATE OF OREGON, HEREBY CERTIFY THAT THIS PLAT AND NOTES HEREON ARE A TRUE AND CORRECT REPRESENTATION OF A SURVEY I CONDUCTED IN NOVEMBER, 2016 AT THE REQUEST OF THE WALLOWA-WHITMAN NATIONAL FOREST, IN ACCORDANCE WITH THE STATUTES OF THE STATE OF OREGON AND THE BUREAU OF LAND MANAGEMENT'S 2009 MANUAL OF SURVEYING INSTRUCTIONS.

*Kenneth A. Lind* 12-6-16  
 SIGNATURE DATE

KENNETH A. LIND  
 WALLOWA-WHITMAN NATIONAL FOREST  
 201 EAST SECOND STREET  
 JOSEPH, OR 97848  
 541-426-5650

UNION COUNTY SURVEYOR

Date Received 1/24/17

Date Filed 1/24/17

By *[Signature]*

File No. 004-2017

REGISTERED PROFESSIONAL LAND SURVEYOR

*Kenneth A. Lind*

OREGON  
 JULY 19, 1984  
 KENNETH A. LIND  
 2672

RENEWS 12-31-16

- LEGEND
- FOUND 2 1/2" ALUMINUM CAPPED MONUMENT  
 SEE UNION COUNTY SURVEY NUMBER 26-89  
 MONUMENTATION RECORD FILED SEPARATELY  
 WITH UNION COUNTY SURVEYOR
  - FOUND 2 1/2" ALUMINUM CAPPED MONUMENT  
 SEE UNION COUNTY SURVEY NUMBER 26-89
  - SET 2" ALUMINUM CAP ON 5/8" X 30" REBAR  
 MARKED AS SHOWN ON TYPICAL CAP DIAGRAM
  - SMALL TRACTS ACT BOUNDARY
  - [ ] RECORD INFORMATION FROM UNION COUNTY  
 SURVEY NUMBER 26-89
  - < > RECORD INFORMATION FROM UNION COUNTY  
 MAJOR PARTITION PLAT NUMBER 1998-21
  - NFSL NATIONAL FOREST SYSTEM LANDS
  - PVT PRIVATE LANDS

REFERENCES

- DEED NUMBER 87614 - MOUNT EMILY LUMBER COMPANY TO UNITED STATES OF AMERICA
- BARGAIN AND SALE DEED - CANTRELL TO CANTRELL
- EASTERN OREGON TITLE REPORT NUMBER 15-25796
- UNION COUNTY SURVEY NUMBER 26-89
- UNION COUNTY MAJOR PARTITION PLAT NUMBER 1998-21
- RIGHT-OF-WAY AND TRACK MAP V-DRE.4/71 - OREGON ASSOCIATION OF COUNTY SURVEYORS WEBSITE
- UNION PACIFIC MAP - 277\_284\_PORTLAND\_HUNTINGTON\_33235\_GLOVER-HILGARD, WITH V-DRE.4/71 DESIGNATION
- UNION PACIFIC MAP - HILGARD\_OR\_STN\_MP281-282\_82317

UNITED STATES DEPARTMENT OF AGRICULTURE  
**FOREST SERVICE**  
 REGION 6 WALLOWA-WHITMAN NATIONAL FOREST 1550 DEWEY AVE. BAKER CITY, OR 97814

WALLOWA-WHITMAN NATIONAL FOREST  
 SMALL TRACTS ACT CASE NO. 061619  
 LOCATED IN GOVERNMENT LOT 3  
 OF SECTION 30  
 TOWNSHIP 2 SOUTH, RANGE 37 EAST  
 WILLAMETTE MERIDIAN  
 UNION COUNTY, OREGON

SURVEY COMPLETED NOVEMBER, 2016