

# Record of a Lot Line Adjustment Survey

in Sections 11&12, Township 1 North, Range 39 East,  
of the Willamette Meridian, Union County, Oregon.

## LEGEND

- Monument Found, 2½ ins. diam. aluminum pipe as described in the Union County Monumentation Records.
- ⦿ Monument Set, a 5/8 inch diam. x 30 inch long Iron Rod with yellow plastic cap marked "BROCKAMP LAND SURVEYING PLS 78556".
- Adjusted Line along Existing Fence Line
- Unserved Deed Line
- - - Unserved aliquot part line
- · - - Unserved right of way
- (West 40 chs.) Record data from GLO plat (unless otherwise noted)

## PARSONS

MF 20083054  
±346.51 acres before adjustment  
±379.26 acres after adjustment

## NARRATIVE

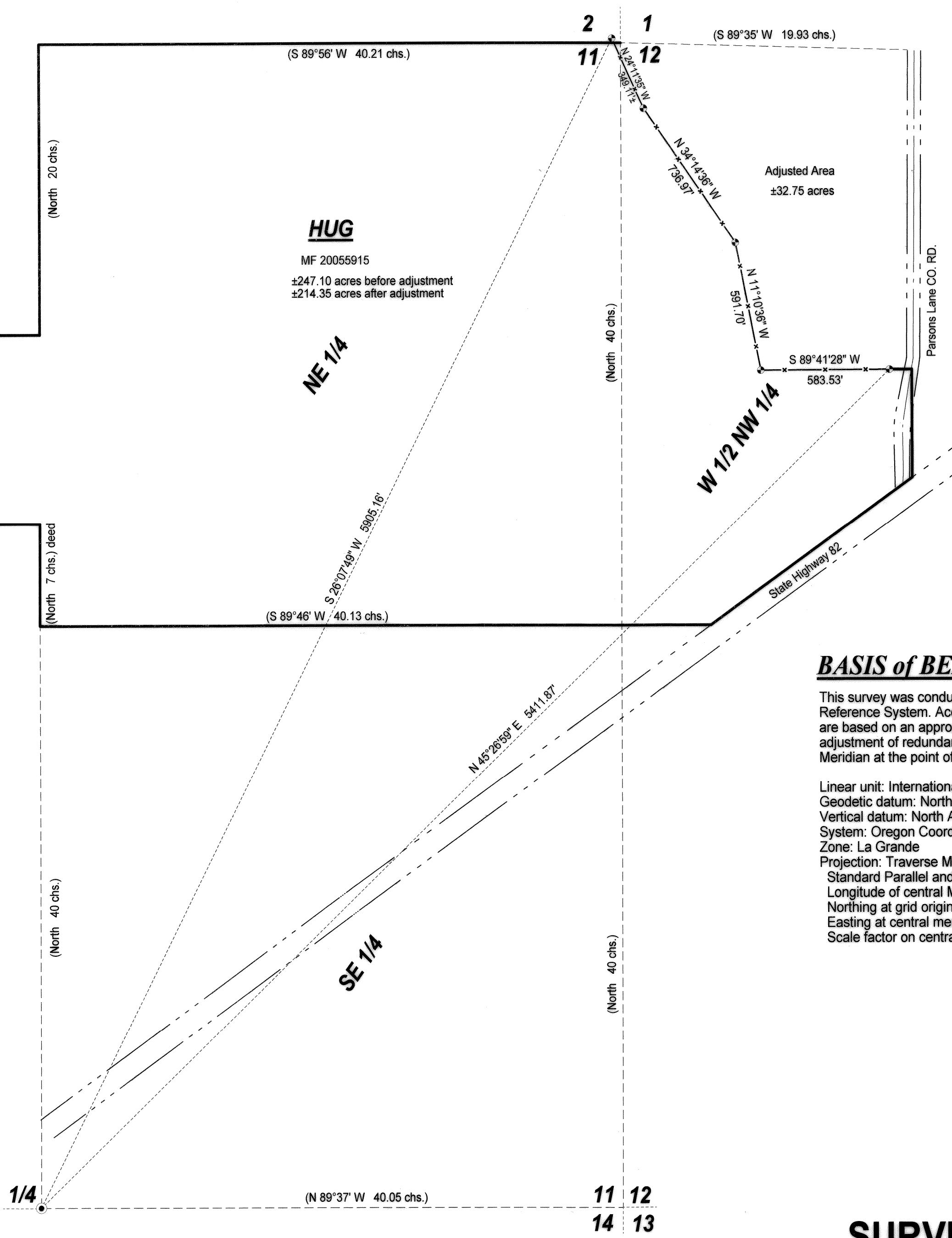
This survey was conducted for the purpose of a Lot Line Adjustment at the request of Kirk Makin, representing the trustees of the Bernal and Virginia Hug Living Trust. This survey recovers the South Quarter Corner of Section 11 as described in the Union County Monumentation Records. This survey sets five monuments along an existing fence in the Northwest quarter of Section 12 as directed by the client for the adjusted lot line. The landowners want to adjust the lines as shown and accrue the adjusted land to the Parsons ownership. Said lines to be shortened or extended to meet the North and East lines of Microfilm Number 20055915.

## BASIS of BEARINGS and COORDINATES

This survey was conducted using GNSS referenced to the National Spatial Reference System. Accuracy estimates are at the 95% confidence level and are based on an appropriately constrained and weighted least-squares adjustment of redundant observations. The Basis of Bearings is the True Meridian at the point of origin.

Linear unit: International foot (ift)  
Geodetic datum: North American Datum of 1983 (2011) epoch 2010.00  
Vertical datum: North American Vertical Datum of 1988  
System: Oregon Coordinate Reference System  
Zone: La Grande  
Projection: Traverse Mercator  
Standard Parallel and Latitude of grid origin: 45°00'00"N  
Longitude of central Meridian: 118°00'00"W  
Northing at grid origin: 0.000m  
Easting at central meridian: 40 000.000m  
Scale factor on central meridian: 1.000130 (exact)

Scale ~ 1" = 400'



## REFERENCE DATA

Union County Monumentation Records  
GLO Plat approved February 7, 1868.  
Survey Number 025-2012  
Deeds:  
Microfilm Number 20055915  
Microfilm Number 20083054

REGISTERED  
PROFESSIONAL  
LAND SURVEYOR

*M. Brockamp*  
OREGON  
MAY 20, 2015  
MATTHEW R. BROCKAMP  
78556  
Registration expires 12/31/2017

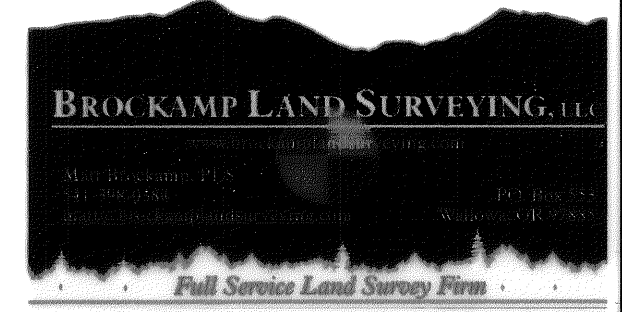
UNION COUNTY  
SURVEYOR

Date Received 12/8/16

Date Filed 12/8/16

By M. Brockamp

File No. 039-2016



**SURVEY NUMBER 039-2016**