

LOT LINE ADJUSTMENT

BASIS OF BEARING

Forward bearing as published by the U.S.C. and G.S. from Δ COLLEGE to Δ VALLEY Dated 1946.

SCALE: 1" = 100'

REFERENCE MATERIAL

Union County Monumentation Records
 Plat of Jordan East Subdivision
 Survey Number 42-72
 Survey Number 1-79
 Survey Number 022-2003
 Survey Number 032-2007
 Partition Plat Number 20070040T
 Partition Plat Number 20160011T
 Partition Plat Number 20160015T

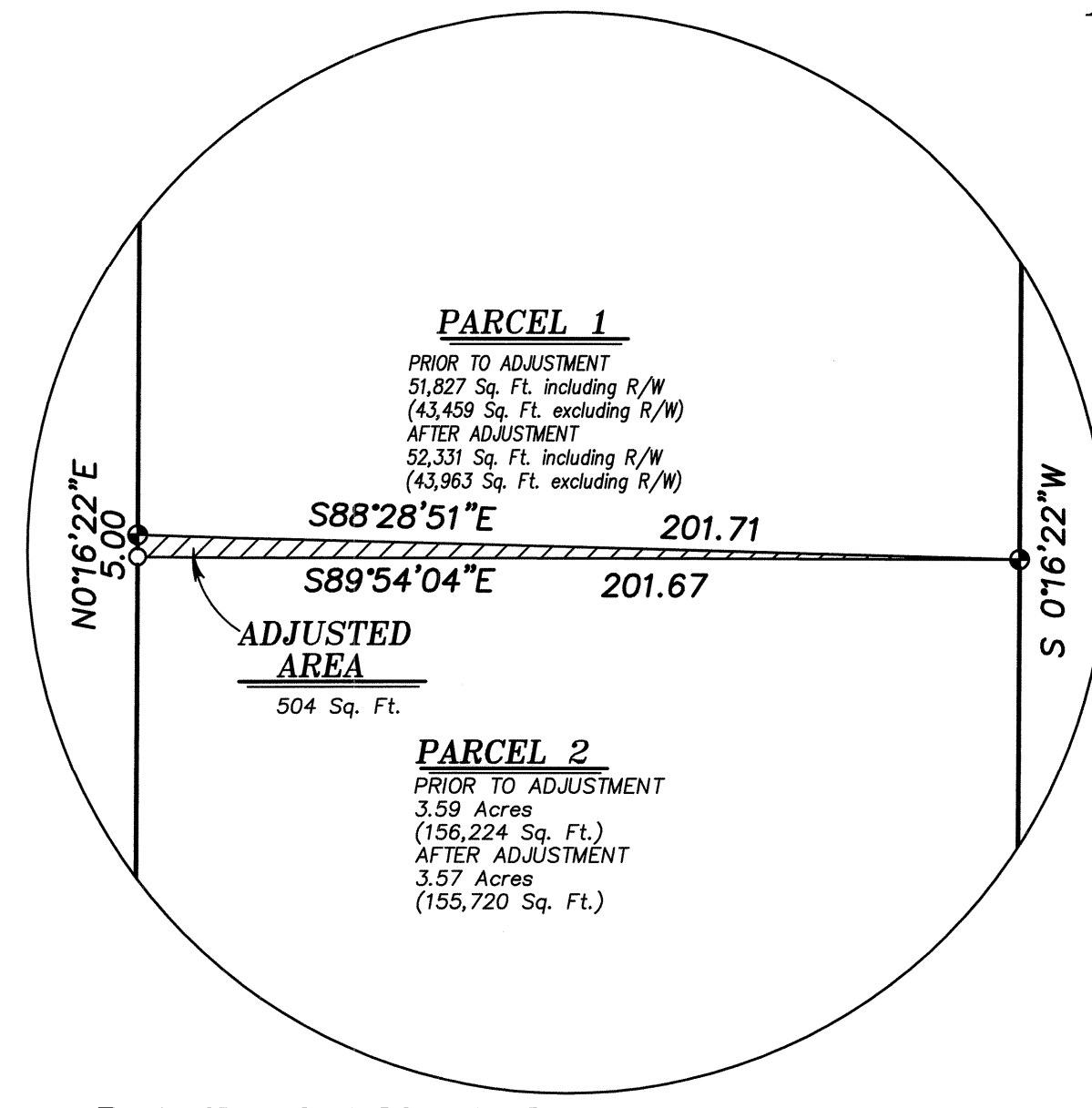
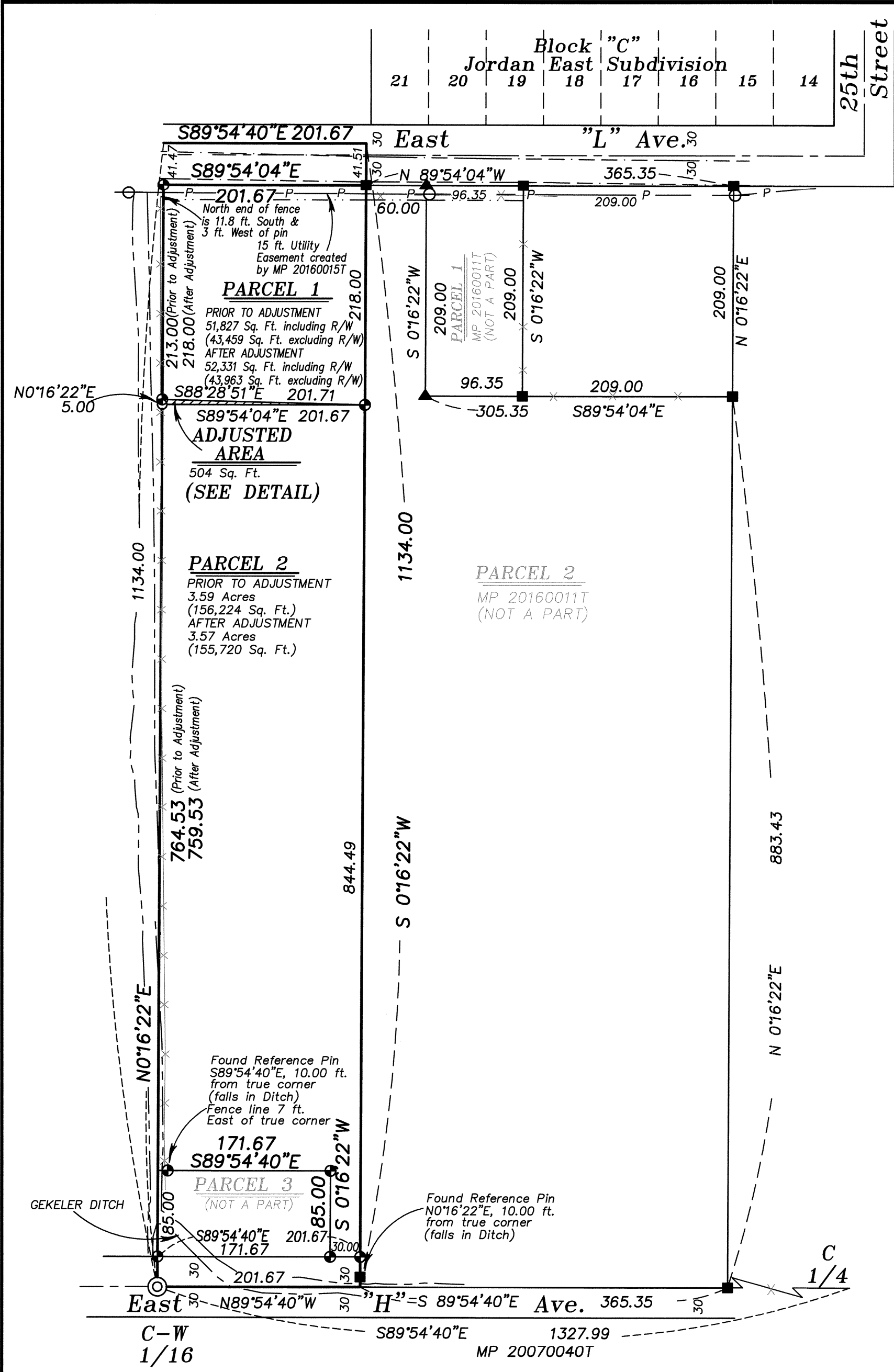
DEED REFERENCES

Volume 36 Page 486
 Volume 36 Page 487
 Volume 53 Page 406
 Volume 63 Page 86
 Volume 86 Page 373
 Volume 121 Page 169
 Volume 121 Page 600
 Volume 158 Page 291
 Volume 160 Page 49
 Microfilm Number 110585
 Microfilm Number 142553
 Microfilm Number 20025495
 Microfilm Number 20031664
 Microfilm Number 20056172

Partition Plat Report Number 16-27657 by Eastern Oregon Title, Inc. dated June 21, 2016

NARRATIVE

This survey was done at the request of Bruce Wise. The purpose of this survey is to document a lot line adjustment between Parcels 1 and 2 of Partition Plat Number 20160015T. The Southwest corner of Parcel 1 was shifted an additional 5 feet South at the request of the owners. I base the location of the exterior of the ownership on the found monuments from previous surveys and partitions as shown. The same conditions exist as documented by partition plat 20160015T. I find no unusual conditions on this survey.



LEGEND

- Found 5/8" iron pin with plastic cap marked "BGB SURVEY MARKER" set by survey number 032-2007
- ▲ Found 5/8" iron pin with plastic cap marked "BGB SURVEY MARKER" set by Partition Plat Number 20160011T
- ⊙ Found 5/8" iron pin with 2 1/2" aluminum cap set by Partition Plat 20160015T
- Found 5/8" iron pin with plastic cap marked "BGB SURVEY MARKER" set by Partition Plat 20160015T
- Set 5/8"x30" iron pin with plastic cap marked "BGB SURVEY MARKER"
- Centerline
- x-x- Existing Fenceline
- - - - - Edge of existing asphalt
- - - - - Bank of existing irrigation ditch
- P- Overhead Utility Lines
- ⊖ Utility Pole

APPROVAL

Approved as a Lot Line Adjustment this 28th day of SEPTEMBER, 2016.

Michael J. Boquist
 Michael J. Boquist
 City Planner, City of La Grande

UNION COUNTY SURVEYOR

Date Received 9/28/16

Date Filed 9/28/16

By [Signature]

File No. 030-2016

BAGETT, GRIFFITH & BLACKMAN
 2006 Adams Avenue, LaGrande, Oregon

Map of Survey
LOT LINE ADJUSTMENT

An adjustment of the common line between Parcels 1 and 2 of Partition Plat Number 20160015T, situate in the SE quarter of the NW quarter of Section 9, Township 3 South, Range 38 East of the Willamette Meridian UNION COUNTY, OREGON

SURVEYED FOR	Bruce Wise
SURVEYED BY	R.G.R. 9/16
Scale: 1" = 100'	Drawn by: R.G.R. 9/16

REGISTERED PROFESSIONAL LAND SURVEYOR

[Signature]
 OREGON
 JULY 17, 1986
RICK G. ROBINSON
 2219

Renewal Date: Dec. 31, 2016