

13 18  
24 19

### REFERENCE MATERIAL

Union County Monumentation Records  
Survey Number 73-79  
Survey Number 017-2005  
Survey Number 045-2013

Oregon-Washington Railroad and Navigation right of way map, dated June 30, 1916

Field Notes of GLO Contract Number 517, dated September 30, 1884, executed by Herman D. Gradon

Field Notes of GLO Contract Number 437, dated June 3, 1882, executed by Rufus S. Moore

### DEED REFERENCES

Microfilm Document Number 159831  
Microfilm Document Number 20134271  
Microfilm Document Number 20134272  
Microfilm Document Number 20134275

RANGE 39 EAST  
RANGE 40 EAST

24 19  
25 30

### NARRATIVE

This survey was done at the request of Patrick Marolla on behalf of Hancock Forest Management, owner of the land within. Mr. Marolla wanted the North line of Section 30 monumented prior to logging. I make a diligent search at the North quarter corner and the Northeast corner of Section 30 and find no remains of the original GLO monument or accessories. A rock jack fence corner, however, does fall near the section corner. At the East quarter corner of Section 30, I find an unrecorded iron pipe which bears record bearing and distance from the original NW bearing tree. I accept the monument in place. At the North quarter corner of Section 29, I can find no trace of the original GLO monument. An OWR&N right of way map, dated 1916 did tie the railroad alignment to this Quarter corner, as well as the NE Section corner of Section 29. I therefore tie existing railroad tracks and match the record alignment in a best fit manner to these existing tracks. The map gives a record angle of 44°11' from the back tangent at station 711+03.6 to the quarter corner, which I find to be extremely improbable, as it would put a greater than 10' skew in the section line. I do believe this angle to be a scrivener error. I therefore try to ascertain the original bearing of this section line by first establishing the record position of the Northeast corner of Section 29, as per the record dimensions of the right of way map, then driving a line through said station 711+03.6. I extend this the record distance of 592 feet to establish the position of the quarter corner. Establishing the corner in this way makes the section line harmonious with GLO bearings and places said quarter corner in line with an ancient blazed line. I find an original bearing tree at the Northeast corner of Section 19 and place the corner at record bearing and distance from said tree. When these corners are used for a double proportion, the said fence corner position at the NE corner of Section 30, falls within 35 feet of a proportionate position and is very harmonious with record bearing and distance in the East, West and Southerly directions. I therefore accept the fence corner as representing the best available evidence of the original corner position.

There is an old rock jack fence corner that falls at the position of the East quarter corner of Section 19. I find this corner to be very harmonious with the previously mentioned fence corner accepted as the NE corner of Section 30, however, the dimension to the Section corner to the North is erratic. In other retracements of Herman Gradon within this township, I have found that although many of his lines match record bearing and distances well, gross deficiencies in distances coupled with excessive angular differences between the record bearings were not altogether uncommon along some half mile runs. Other retracements of Gradon show a similar trend (See Survey 73-79). I therefore still accept this corner as representative of the original corner position. Using this corner for the double proportion computation of the NE corner of Section 30 still places it very close to the aforementioned fence corner (approx. 23 feet).

I find no remains of evidence at the North quarter corner position of Section 30 save a downed barbed wire fenceline running approximately North and South. I find the alignment of this fenceline too irregular to consider using it for corner placement and place the corner at single proportioned position.

I find no other unusual conditions with this survey.

18 17  
19 20

Found decayed NW bearing tree, uprooted and downed, scribes visible. Set monument at record bearing and distance from uprighted position of bearing tree.

(40.00 chs.) 2539.25  
(North) N2°44'51"E  
5243.24 (60.00 chs.)

HANCOCK SPOKANE

Original corner searched for not found. Rock jack fence corner approx. corner position. Due to the harmony with corner to the South I accept this fence corner as representing the best available evidence of the original GLO corner position.

PEARSON MTN. PROPERTIES

(40.00 chs.) 2705.62  
(North) N1°16'23"E  
(North) N0°06'39"W

HANCOCK LEWISTON

19 20  
30 29

(40.00 chs.) 2668.43  
(North) N0°12'38"E

PEARSON MTN. PROPERTIES

1/4 30/29

Found unrecorded 2" iron pipe with brass washer marked "CEQC 1979". Pipe bears record bearing and distance from NW bearing tree, previously opened with scribes visible.

REGISTERED PROFESSIONAL LAND SURVEYOR

OREGON JUNE 2, 2010 JEFFREY S. HSU 83571

Renewal Date: June 30, 2017

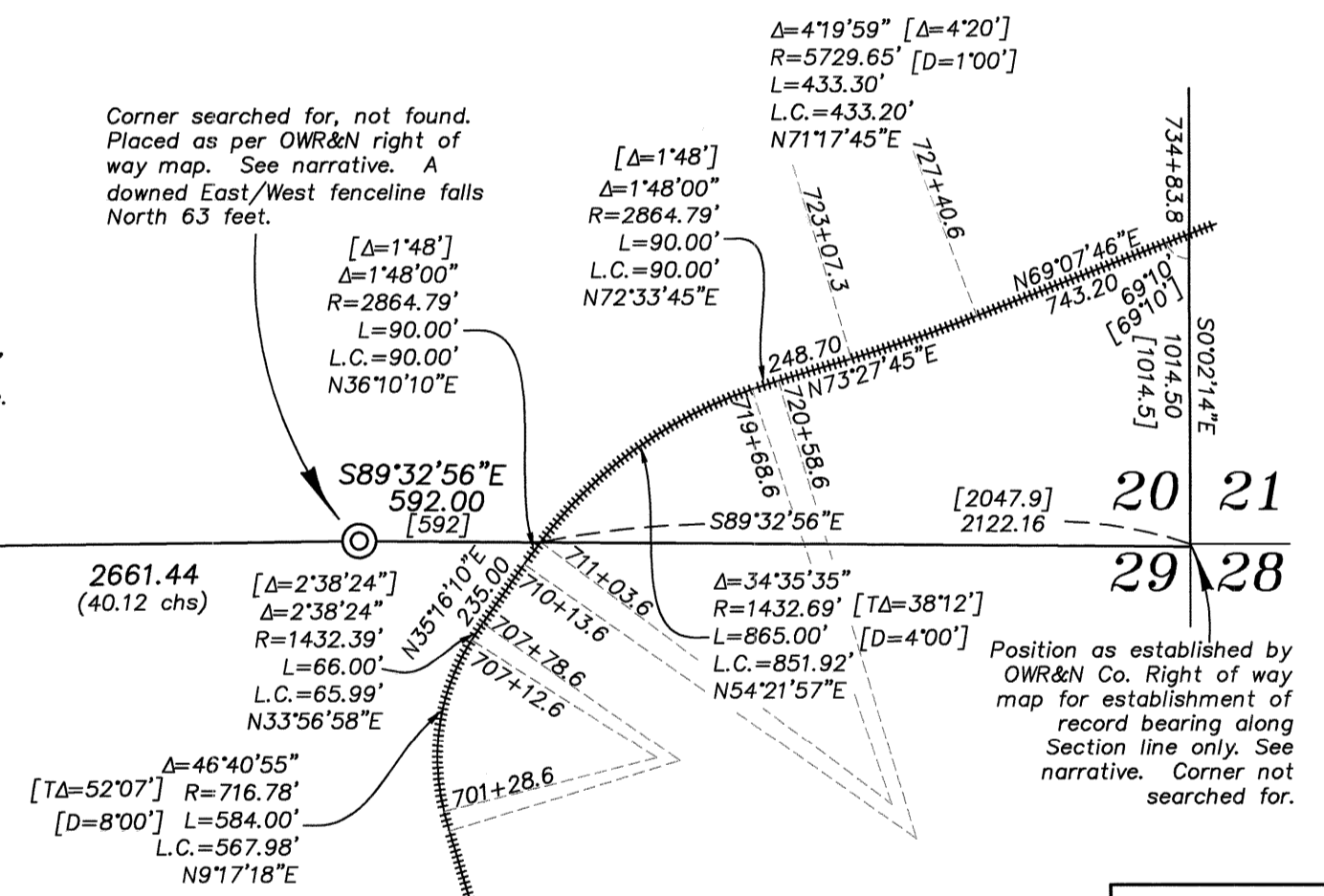
## BASIS OF BEARING

The West line of Section 19, Township 3 North, Range 40 East of the Willamette Meridian being North 0°06'19" East, as per Survey Number 017-2005

SCALE: 1"=600'

## LEGEND

- Found brass plate in concrete block, marked as per Union County Monumentation record 035-2005R
- Found unrecorded 2" iron pipe with brass washer and screw
- Found 2 1/2" iron pipe with 2 1/2" brass cap marked as per Union County Monumentation Records
- Set 2 1/2" x 30" aluminum pipe with aluminum cap marked as per Union County Monumentation records, filed separately
- Record measurement as per field notes of GLO Contract Number 517, executed by Herman Gradon
- Record measurement as per field notes of GLO Contract Number 437, executed by Rufus Moore
- Record measurement as per Oregon-Washington Railroad and Navigation Right of Way map, dated June 30, 1916
- Centerline of Railroad Tracks



UNION COUNTY SURVEYOR

Date Received 8/31/16

Date Filed 8/31/16

By J. S. H.

File No. 028-2016

BAGETT, GRIFFITH & BLACKMAN  
2006 Adams Avenue, LaGrande, Oregon  
Map of Survey

Situate in Sections 19, 20, 29 and 30, Township 3 North, Range 40 East of the Willamette Meridian  
UNION COUNTY, OREGON

SURVEYED FOR	Hancock Forest Management
SURVEYED BY	J. S. H.
Scale: 1" = 600'	Drawn by: J. S. H. Aug. 2016