

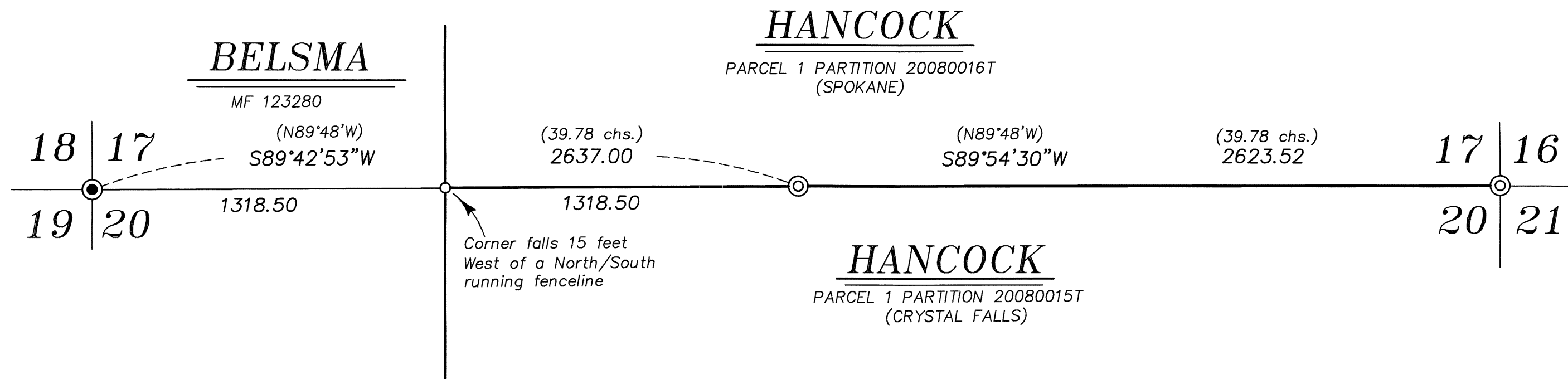
BASIS OF BEARING

The South line of the Southeast quarter of Section 29, Township 4 South, Range 38 East of the Willamette Meridian being North 89°28'12" East, as per Survey Number 013-2005

SCALE: 1" = 400'

LEGEND

- Found 2 1/2" aluminum pipe with 2 1/2" aluminum cap, marked as per Union County Monumentation Records
- ⊙ Set 2 1/2" x 30" aluminum pipe with 2 1/2" aluminum cap, marked as per Union County Monumentation Records
- Set 5/8" x 30" iron pin with 2 1/2" aluminum cap, marked as per Union County Monumentation Records
- () Record measurement as per field notes of GLO contract number 388, executed by W.B. Barr



REFERENCE MATERIAL

Union County Monumentation Records
 Partition Plat 20080015T
 Partition Plat 20080016T
 Survey Number 013-1991
 Survey Number 014-1991
 Survey Number 013-2005

Field Notes of GLO Contract Number 388, dated May 7, 1881, executed by W.B. Barr

DEED REFERENCES

Microfilm Document Number 123280
 Microfilm Document Number 20014422
 Microfilm Document Number 20134272

NARRATIVE

This survey was done at the request of Patrick Marolla on behalf of Hancock Forest Management, land manager for the land within. Mr. Marolla wanted select corners monumented prior to a timber harvest. The Northwest corner of Section 20 was set by Union County Surveyor from original corner evidence. I accept the monument in place. At the quarter corner common to Section 17 and 20, I find a prominent rock mound. This appears to be part of an old North/South running fenceline, as evidenced by other rock mounds extending North and South. I find a pine stump and a stump hole with an uprooted pine stump adjacent at record GLO bearing and distance from said rock mound. The position is also very harmonious with the section corners to the East and West and I accept this mound as the best available evidence of the original corner position. At the Northeast corner of section 20 I find remnants of a rock mound and the original NE bearing tree. I place the corner at record bearing and distance from this tree. Placement of the sixteenth corner is as per BLM Manual of Instructions. I find no unusual conditions with this survey.



UNION COUNTY SURVEYOR	
Date Received	7/21/16
Date Filed	7/21/16
By	<i>M. Galvin</i>
File No.	021-2016

BAGETT, GRIFFITH & BLACKMAN 2006 Adams Avenue, LaGrande, Oregon Map of Survey		
Situate in Sections 17 and 20, Township 4 South, Range 38 East of the Willamette Meridian		
UNION COUNTY, OREGON		
SURVEYED FOR	Hancock Forest Management	
SURVEYED BY	J. S. H.	
Scale: 1" = 400'	Drawn by: J. S. H.	July 2016

SURVEY NUMBER 021-2016